

## OVERVIEW

In spring 2019, MnDOT closed a portion of Highway 67 between Granite Falls and Echo. The roadway carries about 400 cars per day and is built along a slope near a bend in the Yellow Medicine River. The roadway is unstable due to movement of the earth underneath the roadway. MnDOT is currently exploring alternatives to reroute Highway 67 in the area.

## POTENTIAL SOLUTIONS

MnDOT worked throughout 2019 to identify several potential solutions to re-open the closed portion of Hwy 67. The solutions considered included repairing the roadway in place, realigning the roadway along the existing route or rerouting Highway 67 via other roadways.

MnDOT evaluated the potential solutions and determined that repairing or realigning the roadway are not feasible options due to:

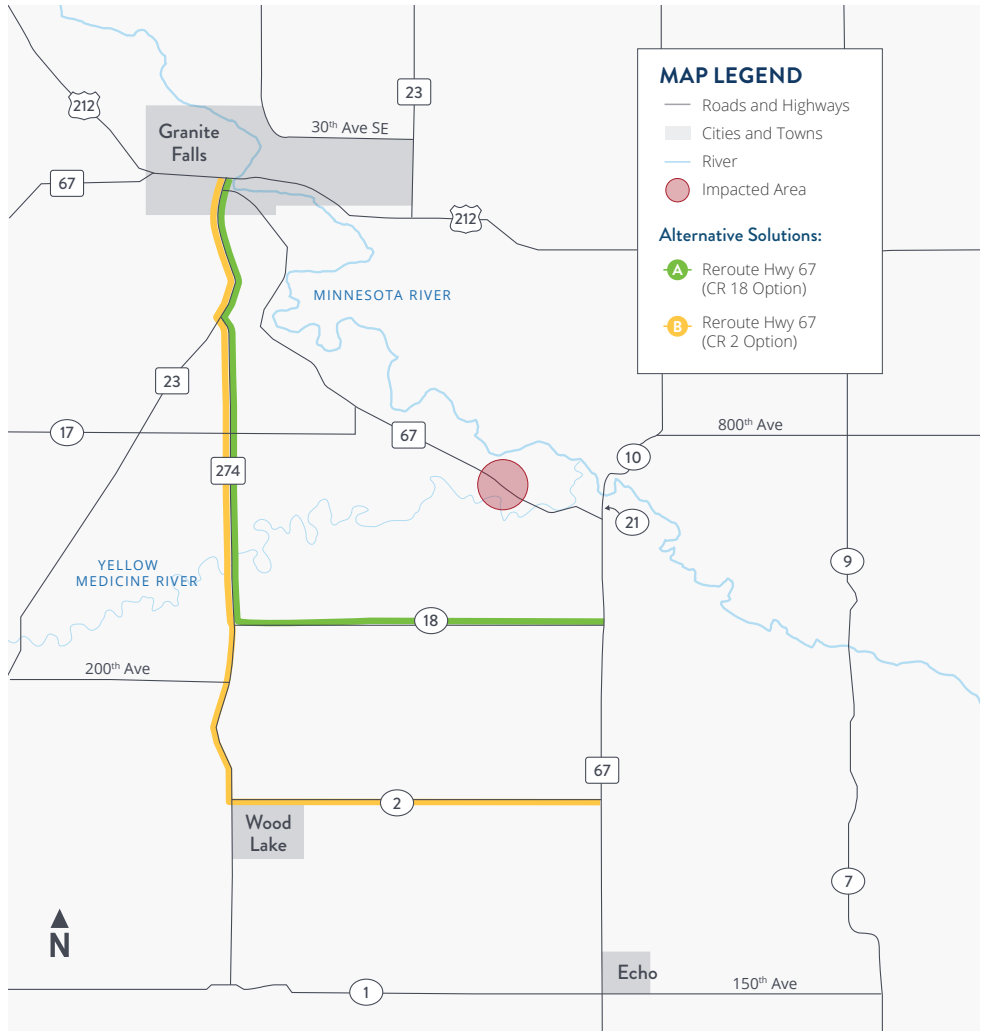


High cost (repairing the roadway in place would cost roughly \$30 million)



Significant impacts to the environment and historic and cultural sites because of the level of construction required to stabilize the ground

MnDOT is continuing to explore two options to reroute Highway 67 between Granite Falls and Echo.



REROUTE ALTERNATIVES	
<b>POTENTIAL SOLUTION:</b>	<div style="display: flex; justify-content: space-around;"> <div style="text-align: center;"> <p><b>A</b></p> <p><b>Reroute Hwy 67 (Co. Rd 18 Option)</b></p> </div> <div style="text-align: center;"> <p><b>B</b></p> <p><b>Reroute Hwy 67 (Co. Rd 2 Option)</b></p> </div> </div>
<b>DESCRIPTION:</b>	<div style="display: flex; justify-content: space-around;"> <div style="width: 45%;"> <p><i>Move the Hwy 67 designation from the existing roadway to portions of Hwy 274 and Co. Rd. 18 (210th Ave.)</i></p> </div> <div style="width: 45%;"> <p><i>Move the Hwy 67 designation from the existing roadway to portions of Hwy 274 and Co. Rd. 2 (180th Ave.)</i></p> </div> </div>

Learn more about the project at:  
[mndot.gov/d8/projects/hwy67granitefallstoecho](http://mndot.gov/d8/projects/hwy67granitefallstoecho)

## PROJECT SCHEDULE

