

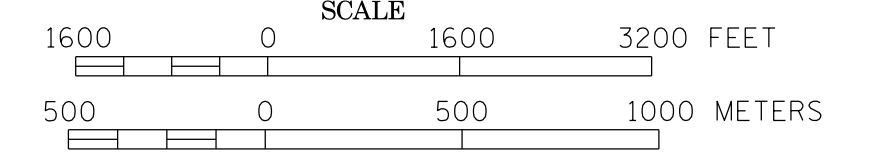
MUNICIPALITY OF
RED WING

PREPARED BY THE
MINNESOTA DEPARTMENT OF TRANSPORTATION
OFFICE OF TRANSPORTATION SYSTEM MANAGEMENT
IN COOPERATION WITH
U.S. DEPARTMENT OF TRANSPORTATION
FEDERAL HIGHWAY ADMINISTRATION

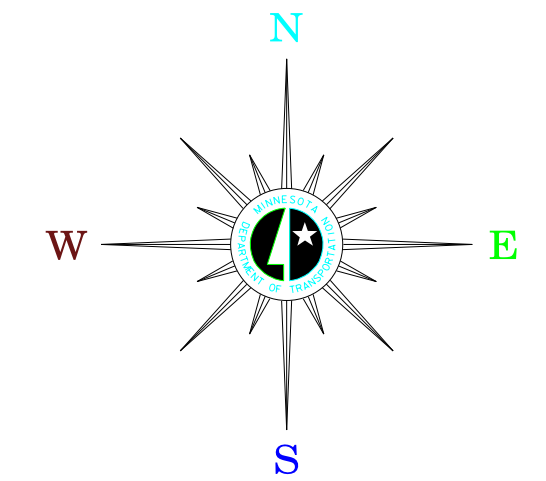
MUNICIPAL STATE AID
STREET SYSTEM

LEGEND

- MUNICIPAL COUNTY STATE AID STREET.....
- MUNICIPAL STATE AID STREET.....
- COUNTY STATE AID HIGHWAY.....
- COUNTY ROAD.....
- TRUNK HIGHWAY.....

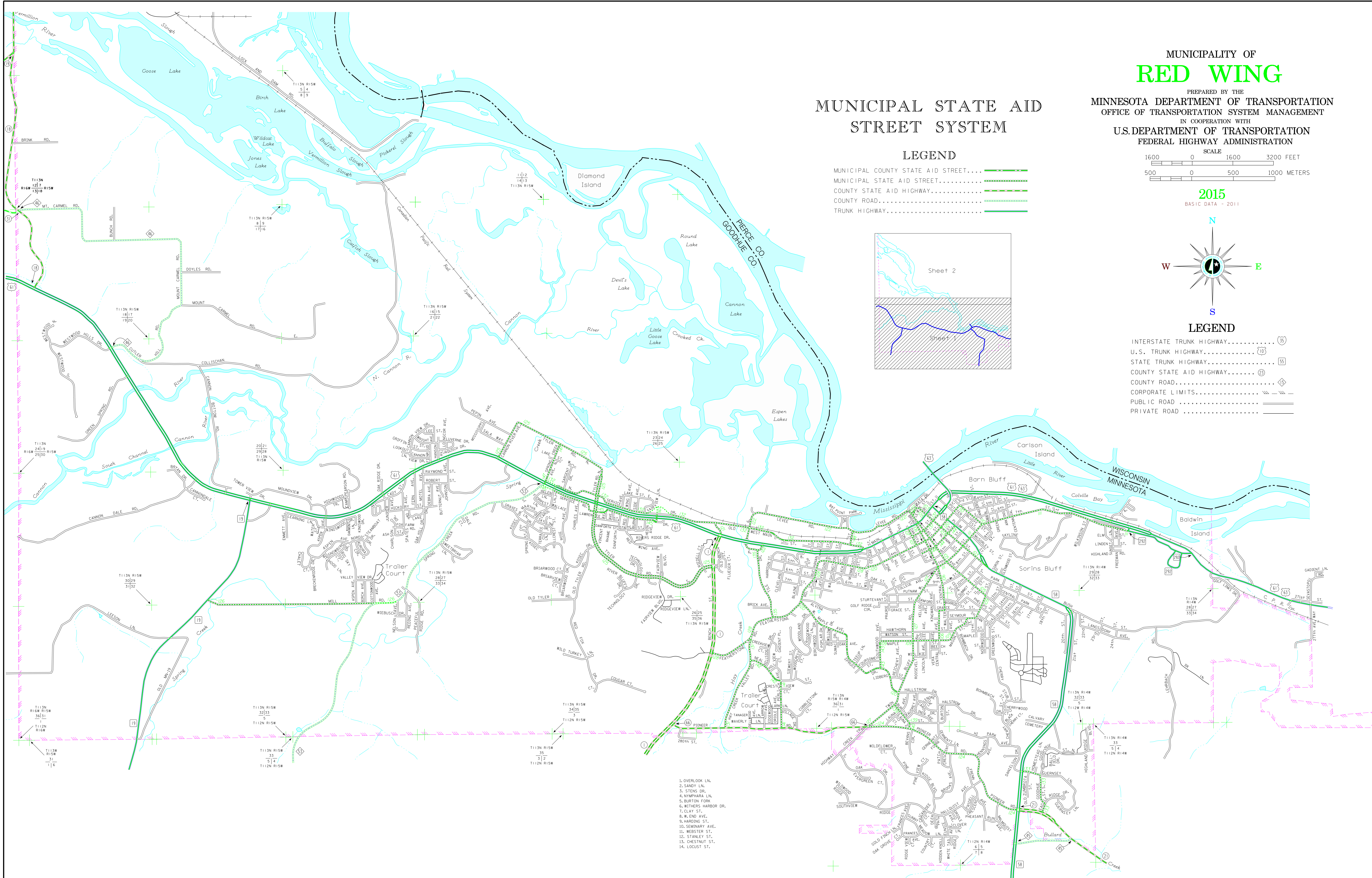
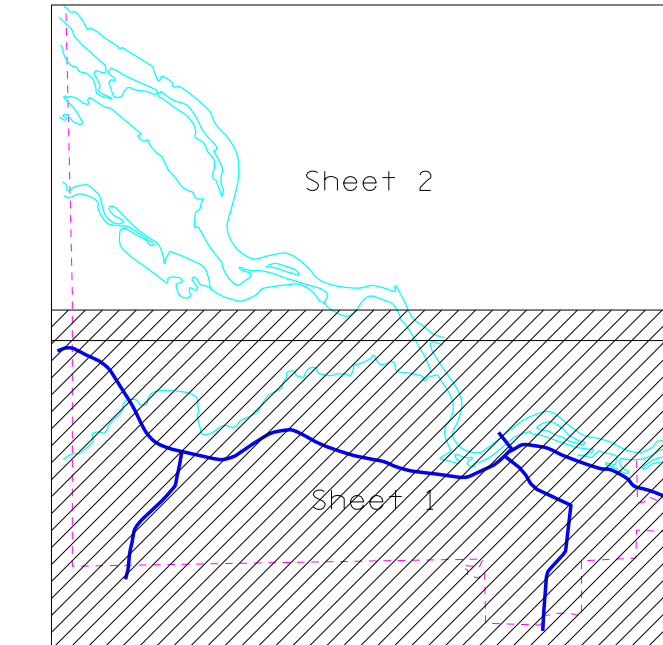


2015
BASIC DATA - 2011



LEGEND

- INTERSTATE TRUNK HIGHWAY.....
- U.S. TRUNK HIGHWAY.....
- STATE TRUNK HIGHWAY.....
- COUNTY STATE AID HIGHWAY.....
- COUNTY ROAD.....
- CORPORATE LIMITS.....
- PUBLIC ROAD.....
- PRIVATE ROAD.....



1. OVERLOOK LN.
2. SANDY LN.
3. STENS DR.
4. NIMPHARA LN.
5. BURTON FORK
6. WITHERS HARBOR DR.
7. CLAY ST.
8. W. END AVE.
9. HARDING ST.
10. SEMINARY AVE.
11. WEBSTER ST.
12. STANLEY ST.
13. CHESTNUT ST.
14. LOCUST ST.

To request information from this document in an alternative format, call 651-366-4718 or 1-800-657-3774 (Greater Minnesota); 711 or 1-800-627-3529 (Minnesota Relay). You may also send an e-mail to ADArequest.dot@state.mn.us. (Please request at least one week in advance).