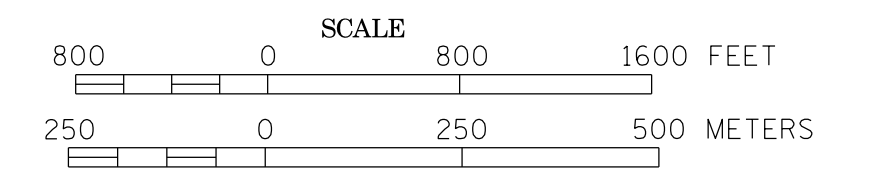
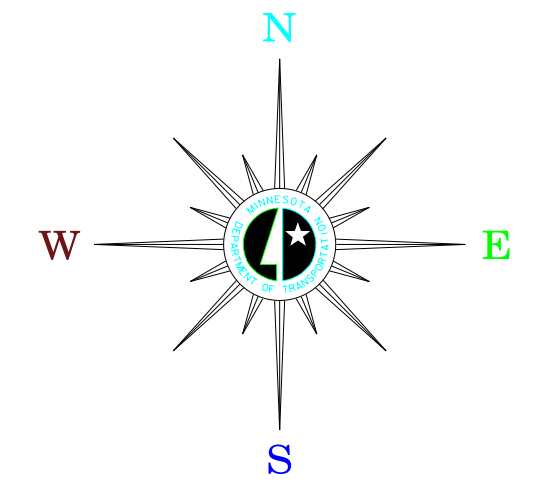


MUNICIPALITY OF STEWARTVILLE

PREPARED BY THE
 MINNESOTA DEPARTMENT OF TRANSPORTATION
 OFFICE OF TRANSPORTATION SYSTEM MANAGEMENT
 IN COOPERATION WITH
 U.S. DEPARTMENT OF TRANSPORTATION
 FEDERAL HIGHWAY ADMINISTRATION



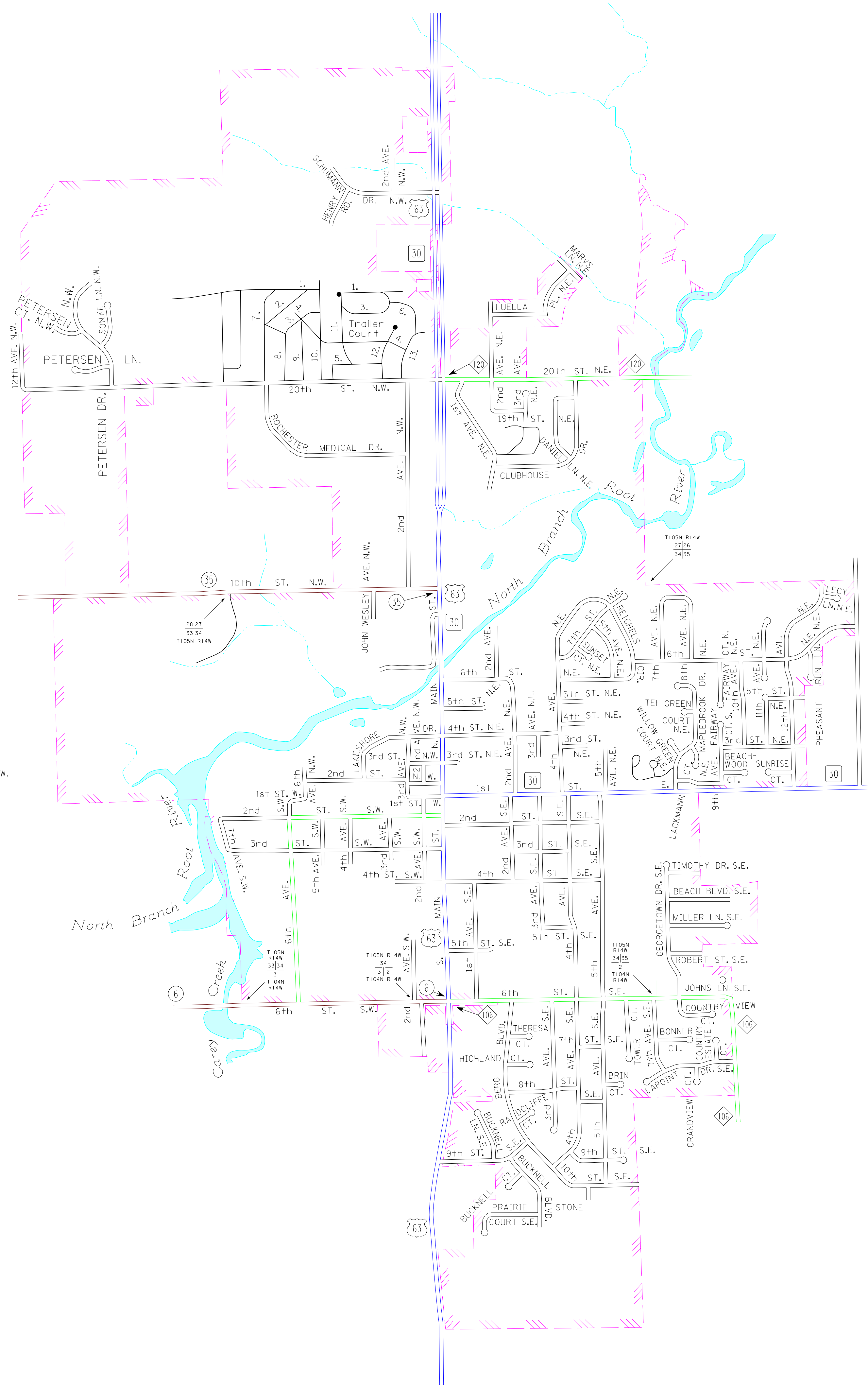
2015
 BASIC DATA - 2014



LEGEND

- INTERSTATE TRUNK HIGHWAY..... (35)
- U.S. TRUNK HIGHWAY..... (10)
- STATE TRUNK HIGHWAY..... (55)
- COUNTY STATE AID HIGHWAY..... (23)
- COUNTY ROAD..... (5)
- CORPORATE LIMITS.....
- PUBLIC ROAD.....
- PRIVATE ROAD.....

1. 23rd ST. N.W.
2. 22 1/2 ST. N.W.
3. 22nd ST. N.W.
4. 21st ST. N.W.
5. 20 1/2 ST. N.W.
6. 23rd ST. N.W.
7. LARK LN. N.W.
8. HURON DR. N.W.
9. GULL LN. N.W.
10. FALCON TERR. N.W.
11. EAGLE DR. N.W.
12. CARDINAL DR. N.W.
13. BLUE BIRD TERR. N.W.



To request information from this document in an alternative format, call 651-366-4718 or 1-800-657-3774 (Greater Minnesota), 711 or 1-800-627-3529 (Minnesota Relay). You may also send an e-mail to ADArequest.dot@state.mn.us. (Please request at least one week in advance).