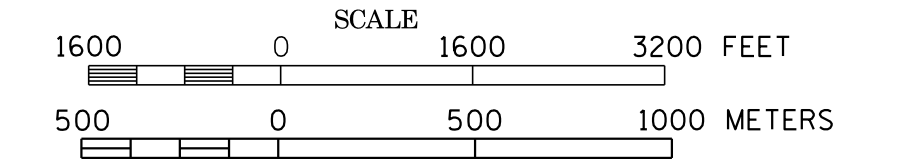


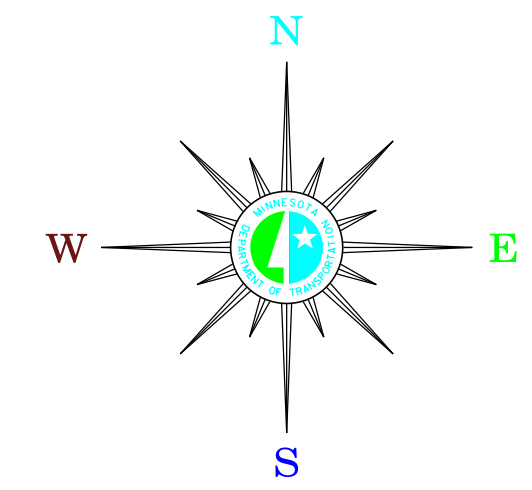
**NOWTHEN**  
 ANOKA COUNTY  
 POP. 4,443

MUNICIPALITIES OF  
**ANOKA CO.**

PREPARED BY THE  
 MINNESOTA DEPARTMENT OF TRANSPORTATION  
 OFFICE OF TRANSPORTATION SYSTEM MANAGEMENT  
 IN COOPERATION WITH  
 U.S. DEPARTMENT OF TRANSPORTATION  
 FEDERAL HIGHWAY ADMINISTRATION

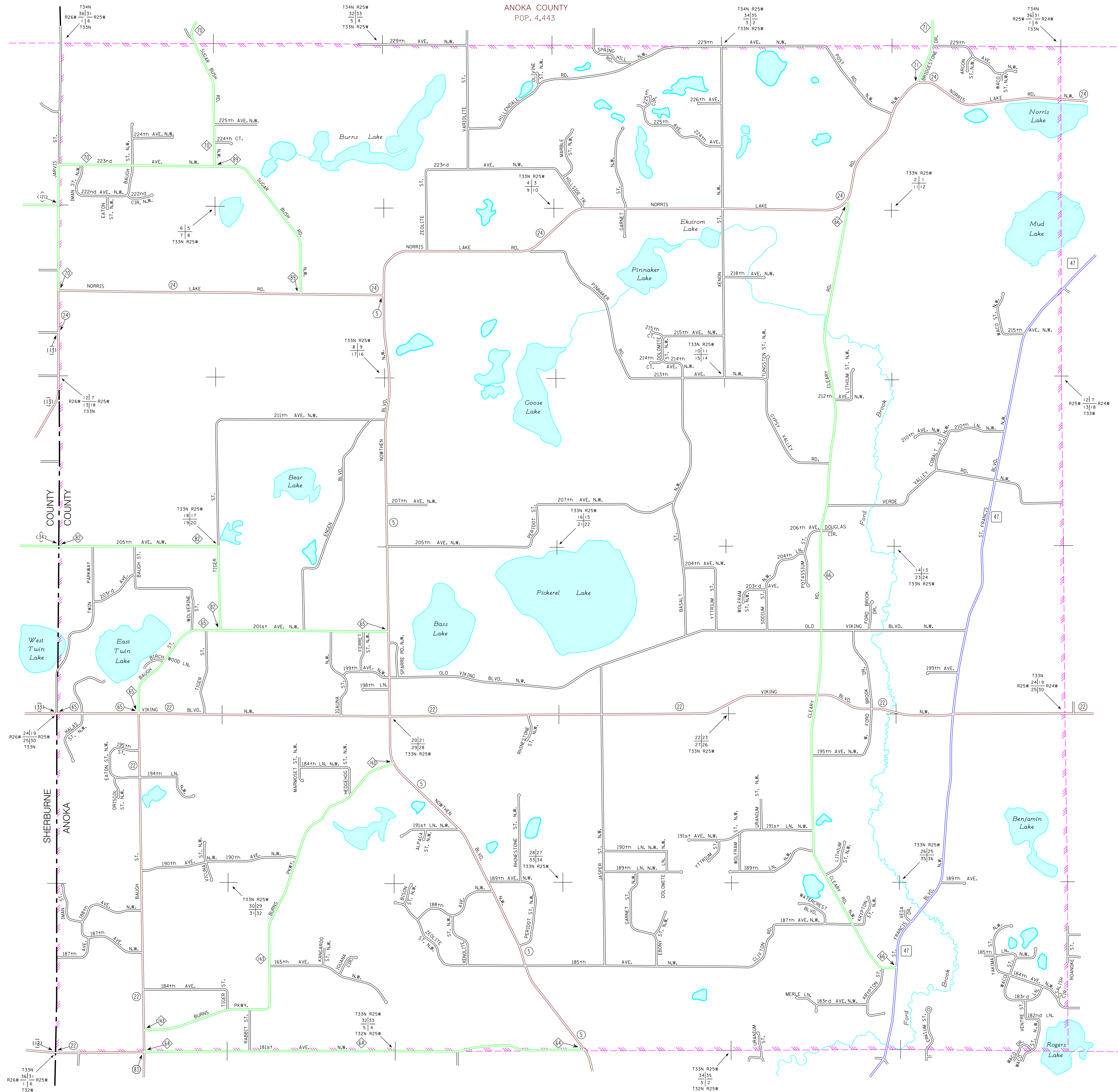


**2015**  
 BASIC DATA - 2014



**LEGEND**

- INTERSTATE TRUNK HIGHWAY..... (35)
- U.S. TRUNK HIGHWAY..... (10)
- STATE TRUNK HIGHWAY..... (55)
- COUNTY STATE AID HIGHWAY..... (23)
- COUNTY ROAD..... (14)
- PUBLIC ROAD.....
- PRIVATE ROAD.....
- CORPORATE LIMITS.....



To request information from this document in an alternative format, call 651-368-4718 or 1-800-657-3774 (Greater Minnesota); 711 or 1-800-627-3529 (Minnesota Relay). You may also send an e-mail to [ADRequest.dta@state.mn.us](mailto:ADRequest.dta@state.mn.us) (Please request at least one week in advance).

NOTE: 2010 U.S. CENSUS FIGURES SHOWN FOR ALL MUNICIPALITIES UNLESS OTHERWISE STATED.

MUNICIPALITIES SHOWN  
 ON THIS SHEET  
 NOWTHEN