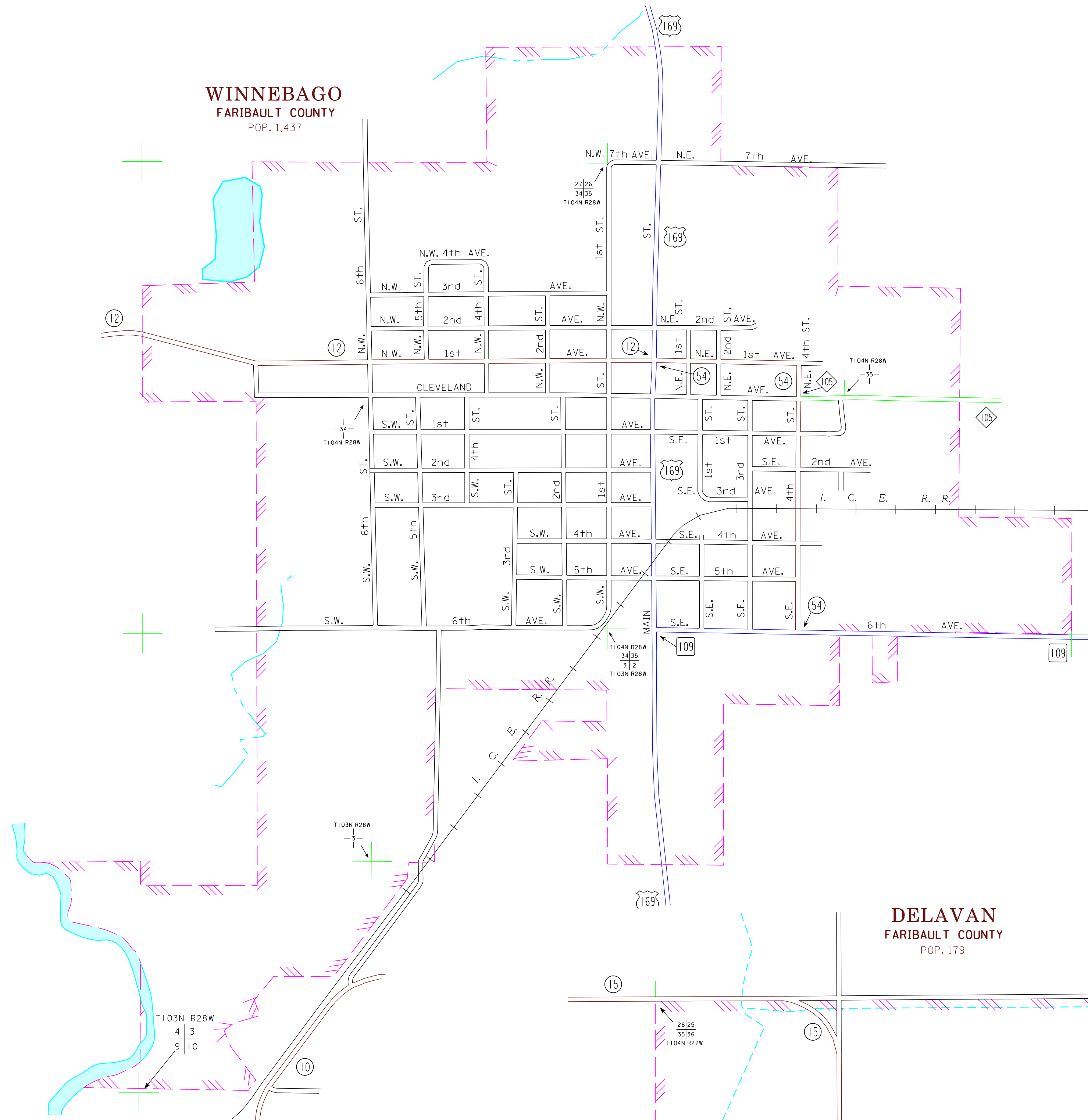
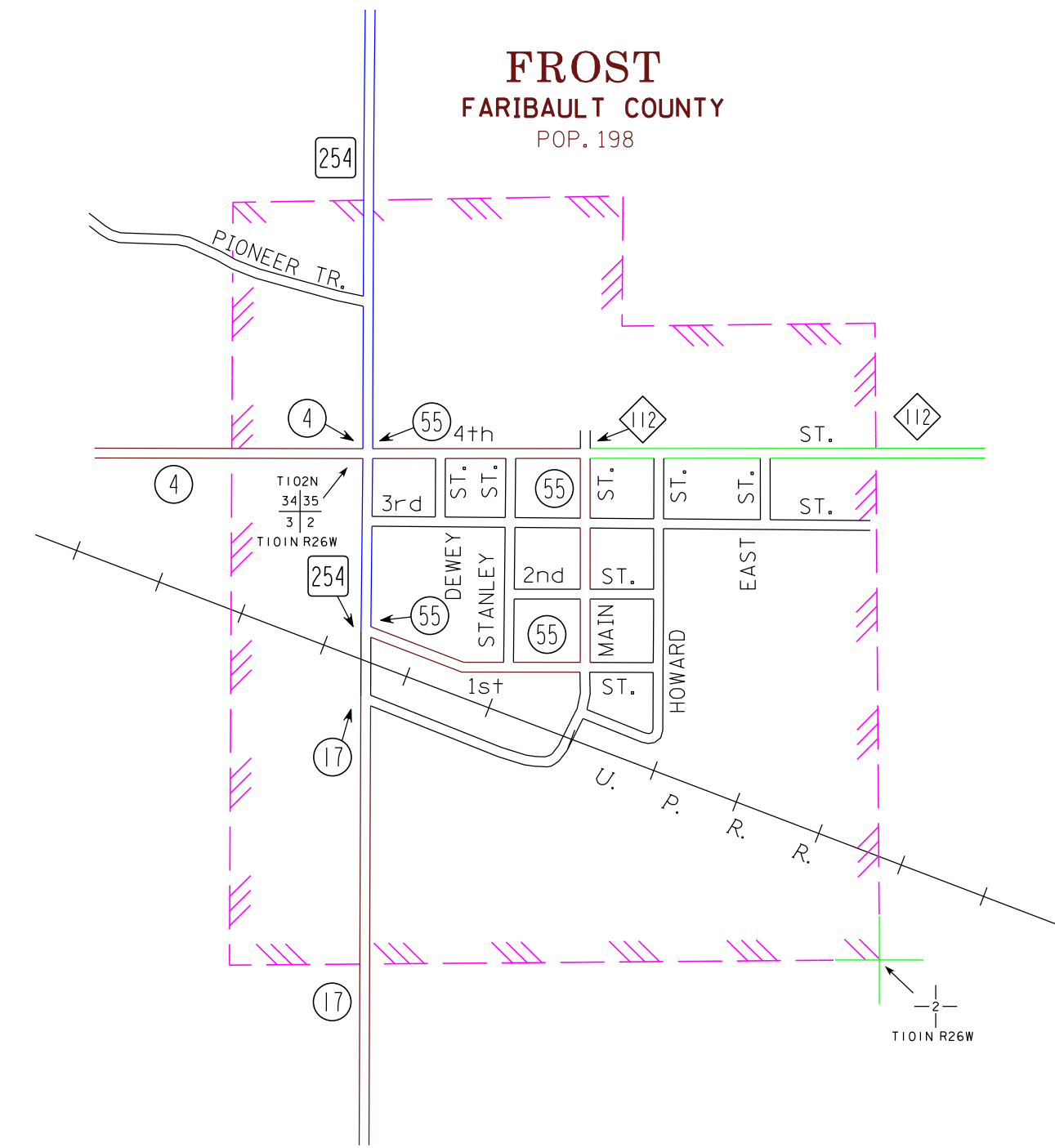


**WINNEBAGO**  
FARIBAUT COUNTY  
POP. 1,437

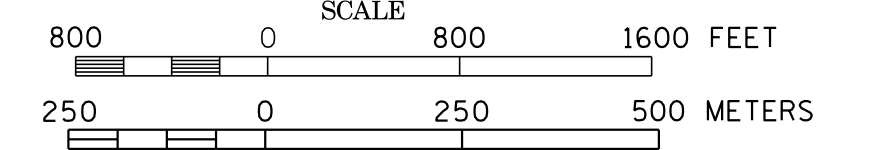


**FROST**  
FARIBAUT COUNTY  
POP. 198

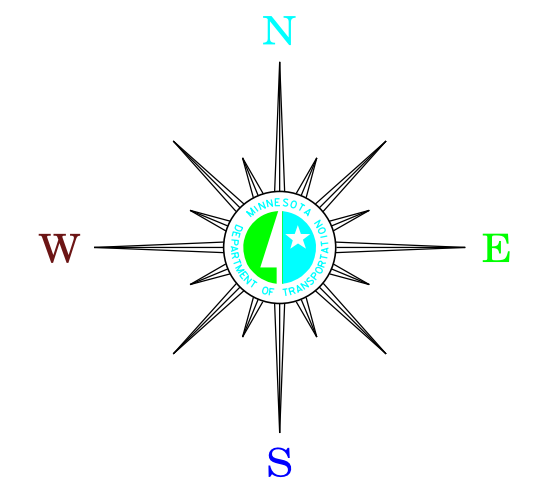


MUNICIPALITIES OF  
**FARIBAUT CO.**

PREPARED BY THE  
MINNESOTA DEPARTMENT OF TRANSPORTATION  
OFFICE OF TRANSPORTATION SYSTEM MANAGEMENT  
IN COOPERATION WITH  
U.S. DEPARTMENT OF TRANSPORTATION  
FEDERAL HIGHWAY ADMINISTRATION



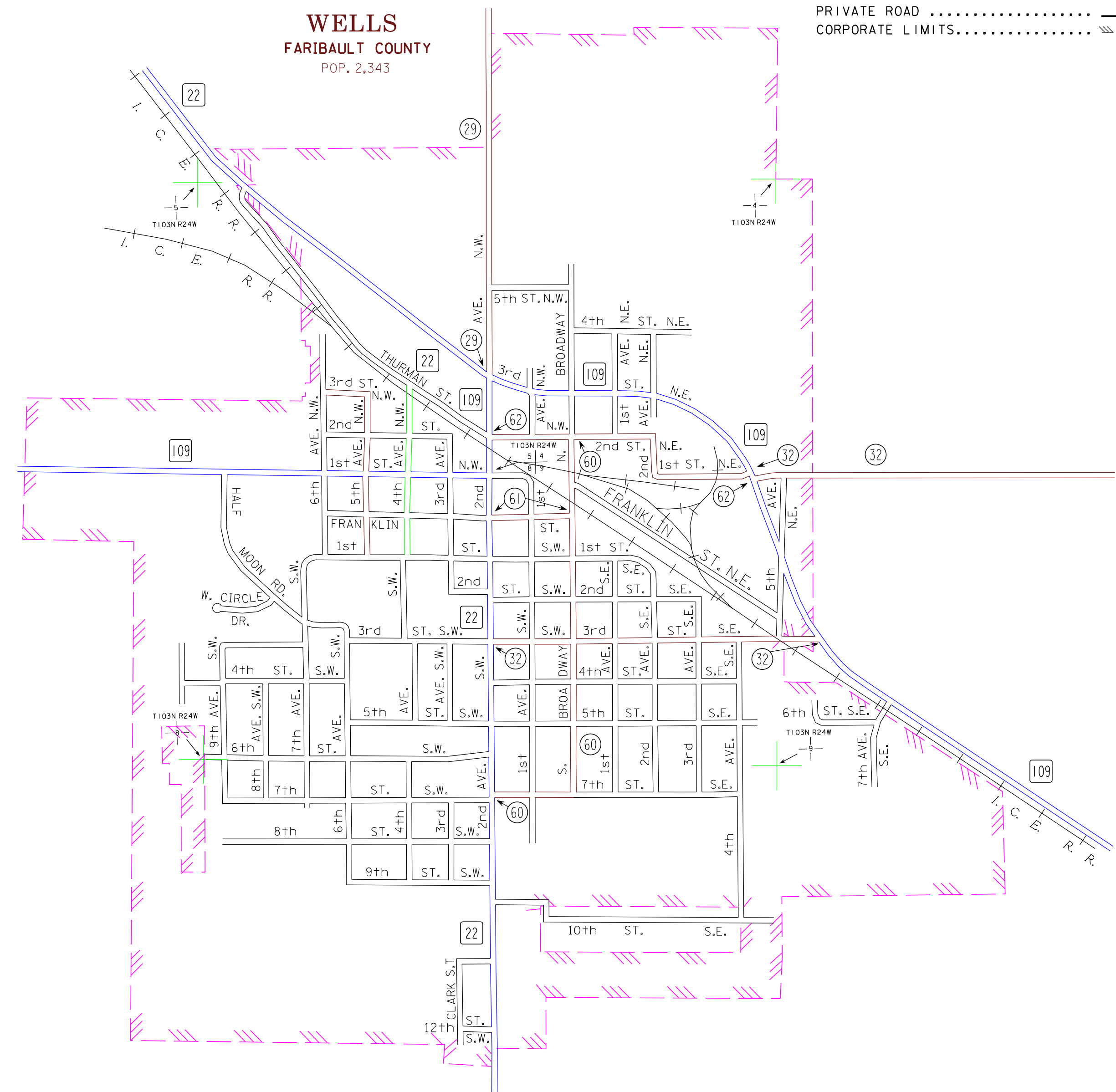
**2015**  
BASIC DATA - 2013



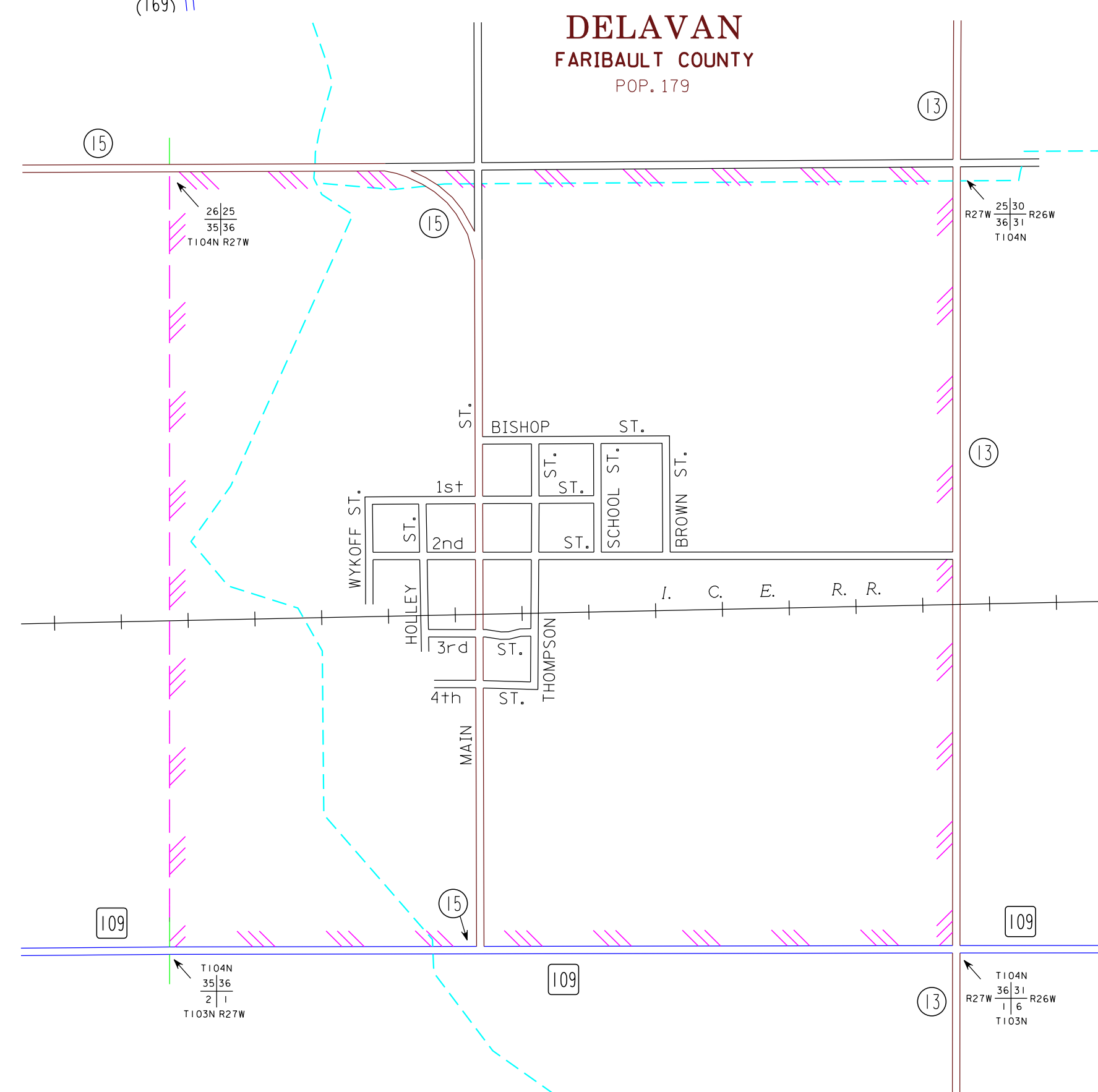
**LEGEND**

- INTERSTATE TRUNK HIGHWAY..... (I-95)
- U.S. TRUNK HIGHWAY..... (169)
- STATE TRUNK HIGHWAY..... (55)
- COUNTY STATE AID HIGHWAY..... (23)
- COUNTY ROAD..... (12)
- PUBLIC ROAD..... (54)
- PRIVATE ROAD..... (109)
- CORPORATE LIMITS..... (dashed line)

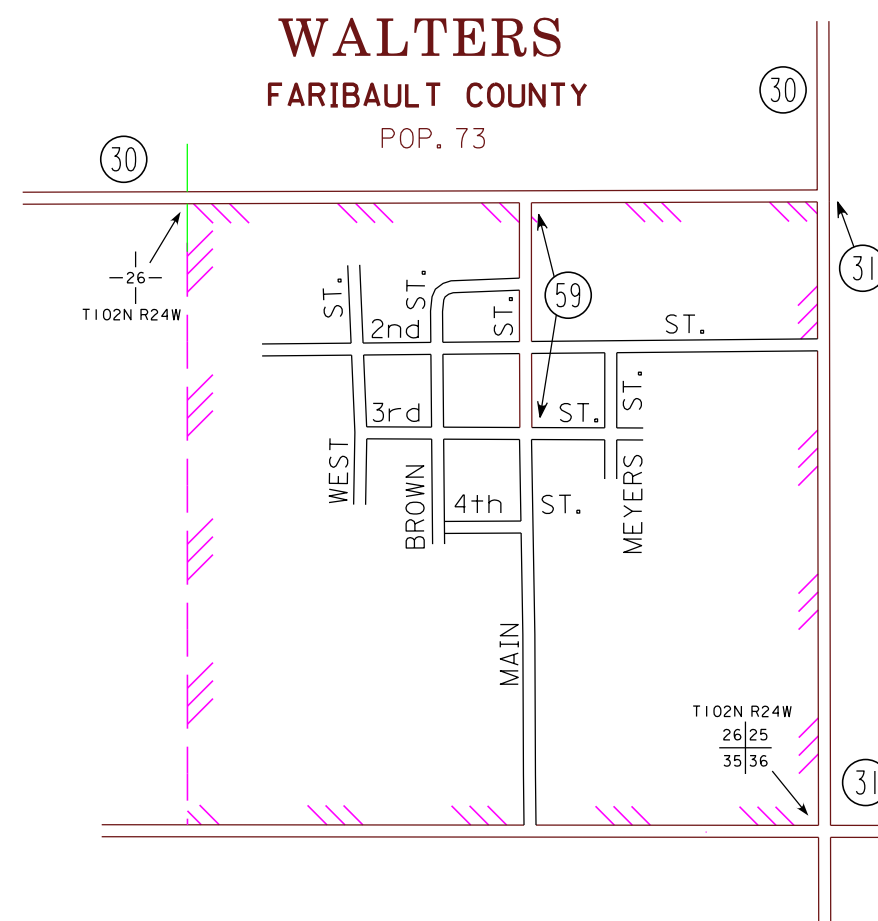
**WELLS**  
FARIBAUT COUNTY  
POP. 2,343



**DELAVAN**  
FARIBAUT COUNTY  
POP. 179



**WALTERS**  
FARIBAUT COUNTY  
POP. 73



- MUNICIPALITIES SHOWN  
ON THIS SHEET
- DELAVAN
  - FROST
  - WALTERS
  - WELLS
  - WINNEBAGO

To request information from this document in an alternative format, call 651-366-4718 or 1-800-657-3774 (Greater Minnesota), 711 or 1-800-627-3529 (Minnesota Relay). You may also send an e-mail to ADArequest.dot@state.mn.us. (Please request at least one week in advance).

NOTE: 2010 U.S. CENSUS FIGURES SHOWN FOR ALL MUNICIPALITIES UNLESS OTHERWISE STATED.