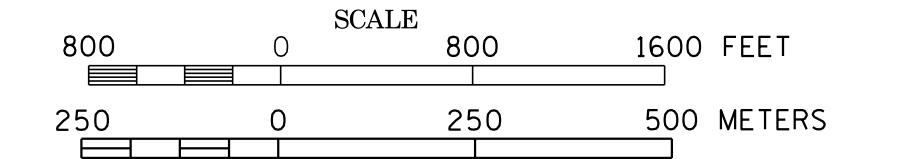
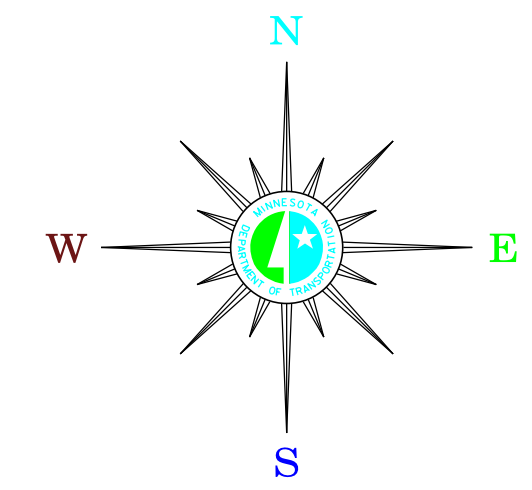


MUNICIPALITIES OF  
**FILLMORE CO.**

PREPARED BY THE  
MINNESOTA DEPARTMENT OF TRANSPORTATION  
OFFICE OF TRANSPORTATION SYSTEM MANAGEMENT  
IN COOPERATION WITH  
U.S. DEPARTMENT OF TRANSPORTATION  
FEDERAL HIGHWAY ADMINISTRATION



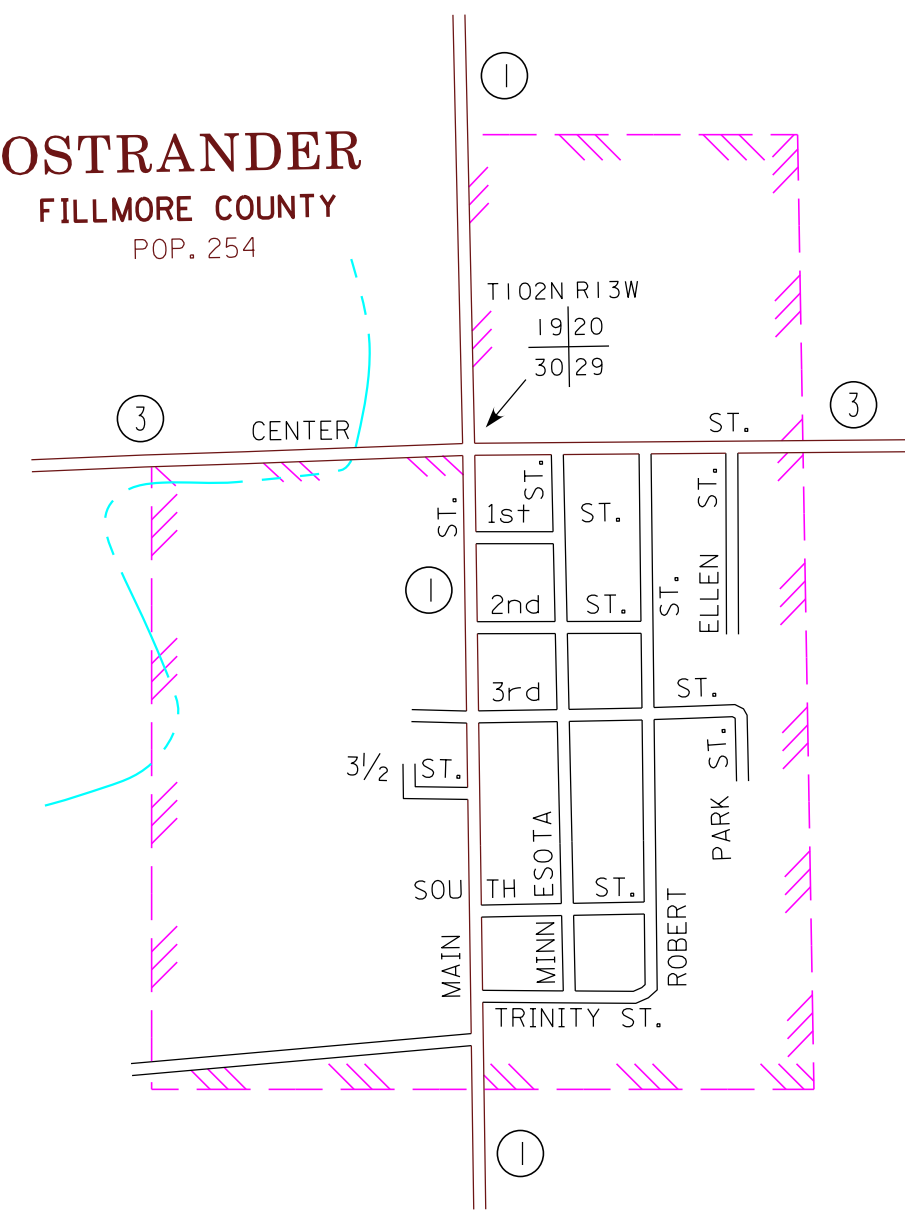
**2015**  
BASIC DATA - 2013



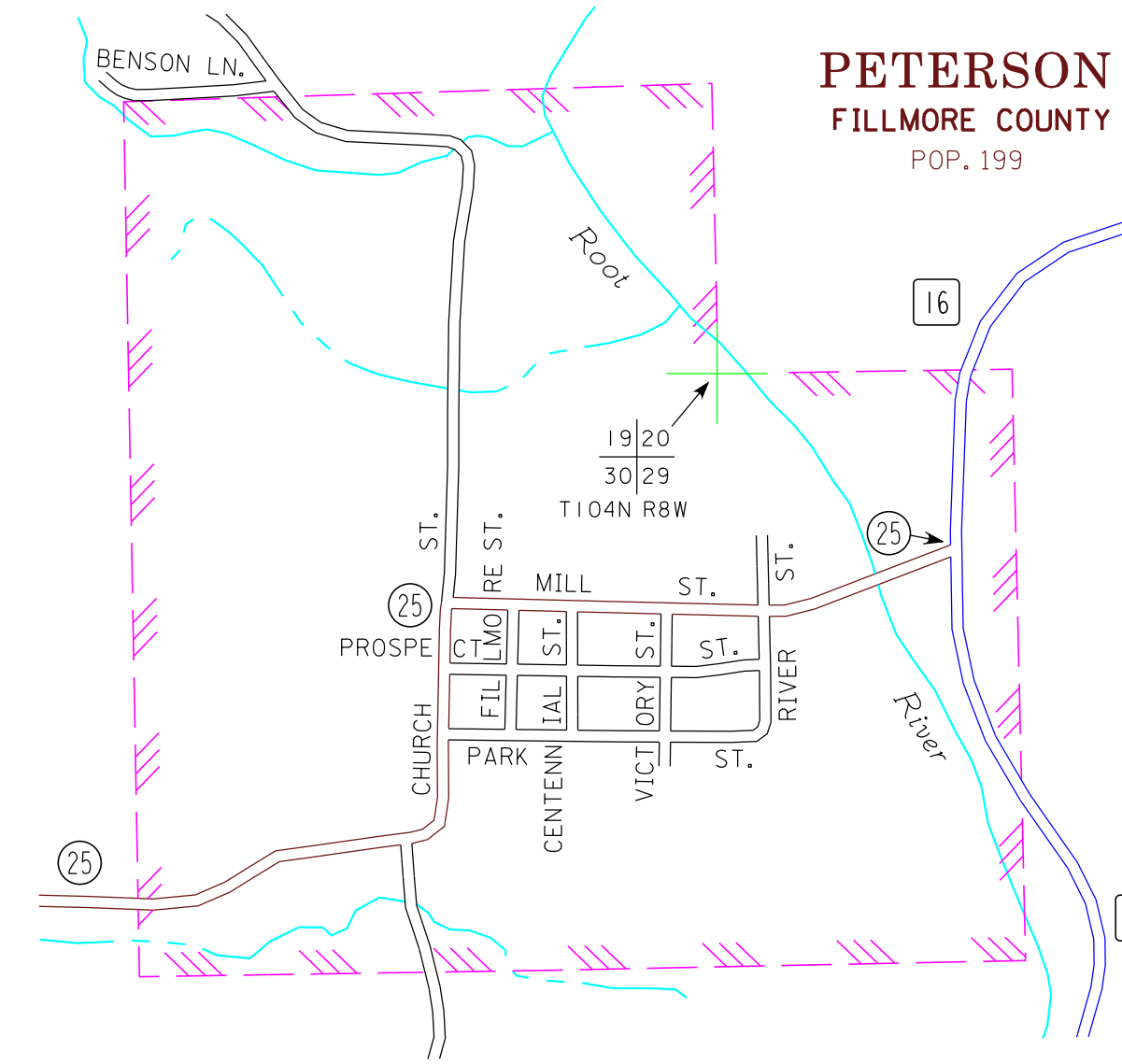
**LEGEND**

- INTERSTATE TRUNK HIGHWAY..... (I-95)
- U.S. TRUNK HIGHWAY..... (16)
- STATE TRUNK HIGHWAY..... (55)
- COUNTY STATE AID HIGHWAY..... (25)
- COUNTY ROAD..... (30)
- PUBLIC ROAD..... (19)
- PRIVATE ROAD..... (18)
- CORPORATE LIMITS.....

**OSTRANDER**  
FILLMORE COUNTY  
POP. 254

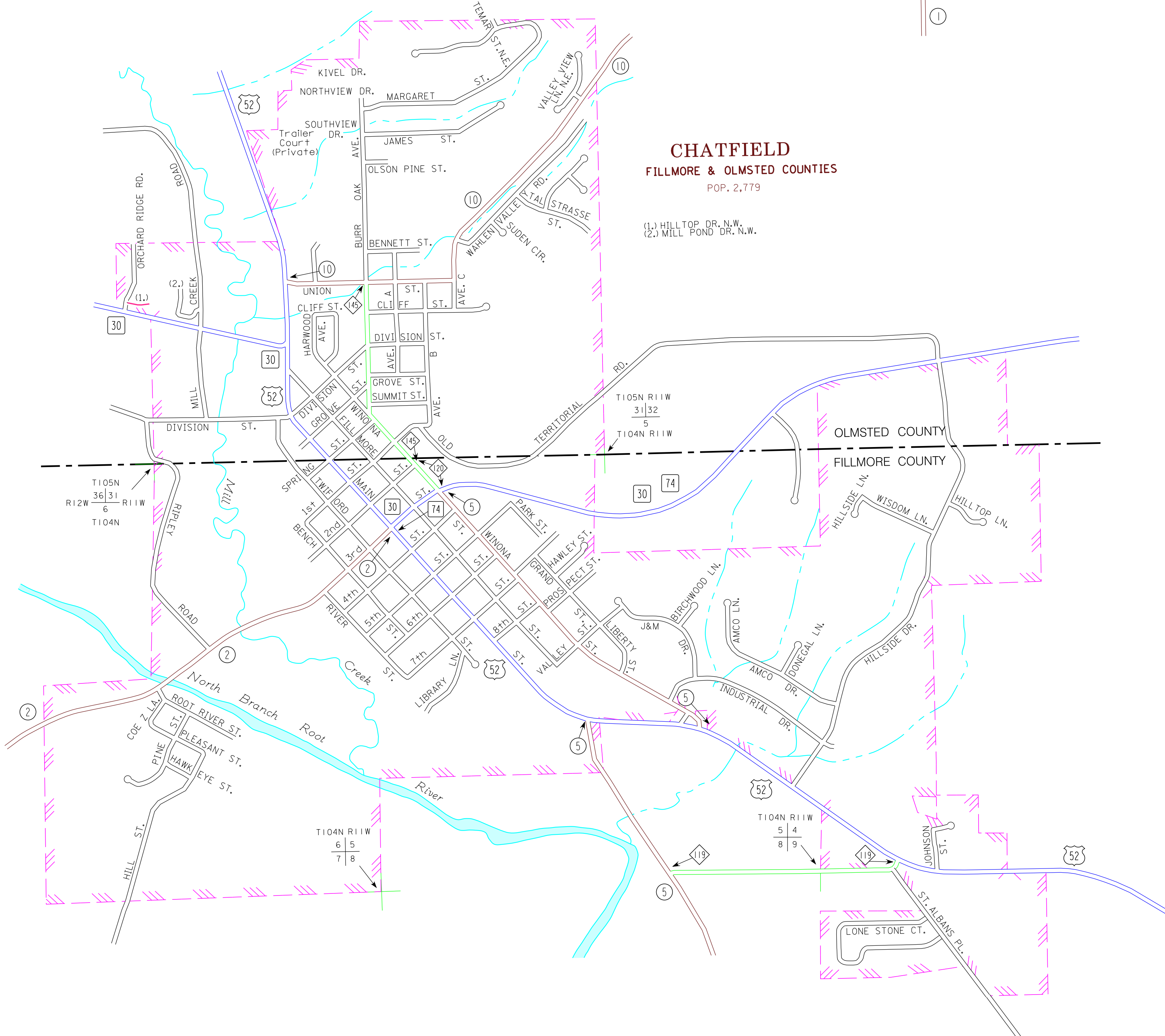


**PETERSON**  
FILLMORE COUNTY  
POP. 199

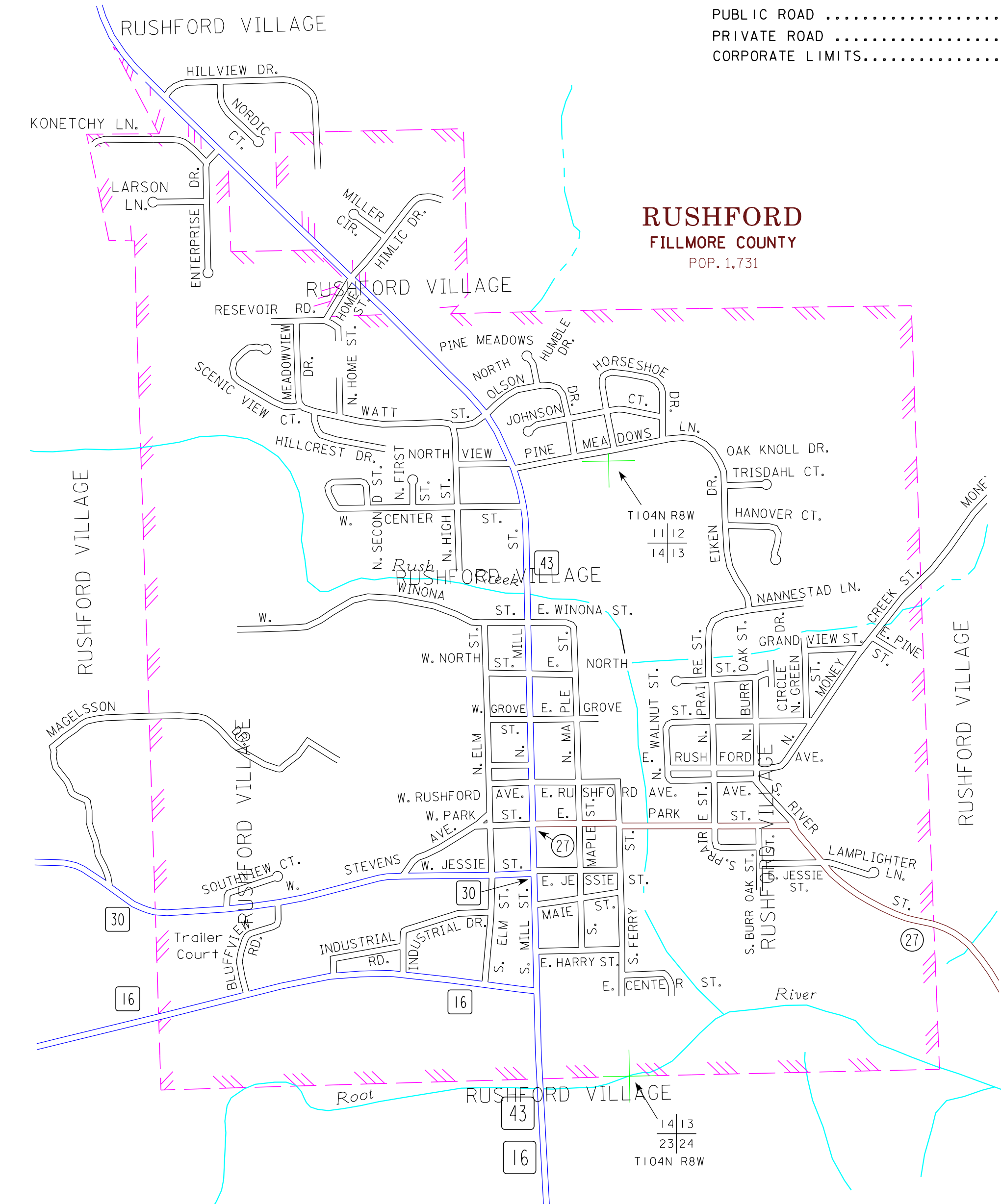


**CHATFIELD**  
FILLMORE & OLMTED COUNTIES  
POP. 2,779

(1) HILL TOP DR. N.W.  
(2) MILL POND DR. N.W.



**RUSHFORD**  
FILLMORE COUNTY  
POP. 1,731



- MUNICIPALITIES SHOWN  
ON THIS SHEET
- CHATFIELD
  - OSTRANDER
  - PETERSON
  - RUSHFORD

To request information from this document in an alternative format, call 851-366-4718 or 1-800-657-3774 (Greater Minnesota); 711 or 1-800-627-3529 (Minnesota Relay). You may also send an e-mail to [ACMrequest.dot@state.mn.us](mailto:ACMrequest.dot@state.mn.us). (Please request at least one week in advance).

NOTE: 2010 U.S. CENSUS FIGURES SHOWN FOR ALL MUNICIPALITIES UNLESS OTHERWISE STATED.