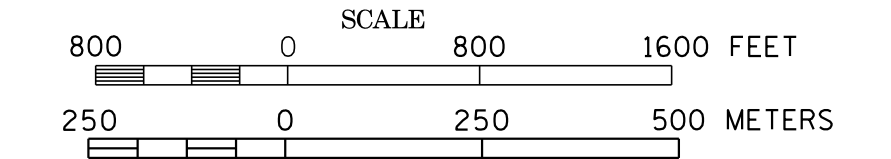
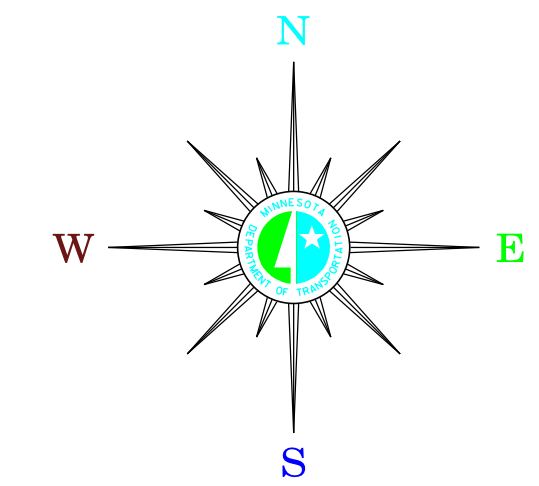


MUNICIPALITIES OF
FREEBORN CO.

PREPARED BY THE
MINNESOTA DEPARTMENT OF TRANSPORTATION
OFFICE OF TRANSPORTATION SYSTEM MANAGEMENT
IN COOPERATION WITH
U.S. DEPARTMENT OF TRANSPORTATION
FEDERAL HIGHWAY ADMINISTRATION

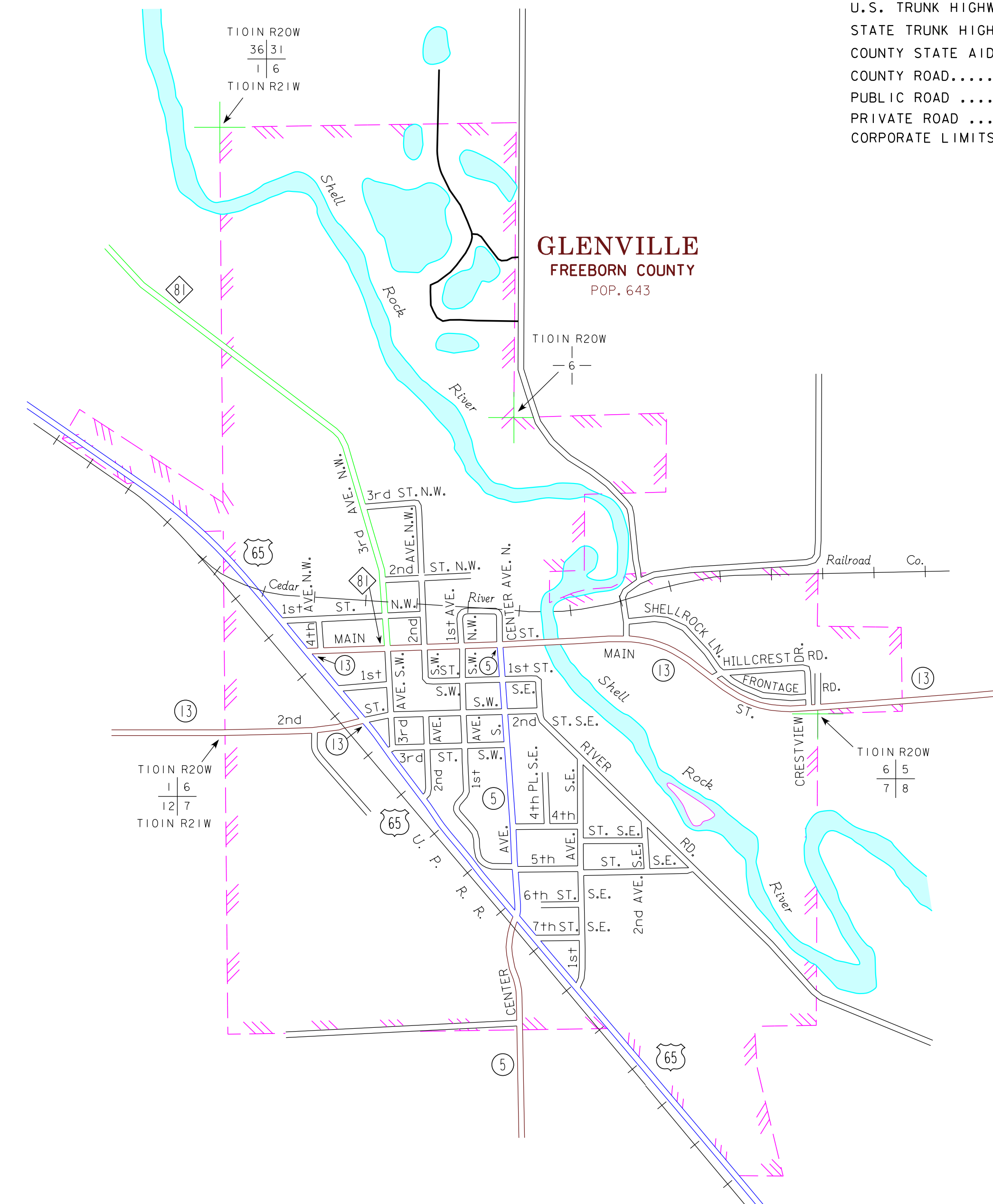
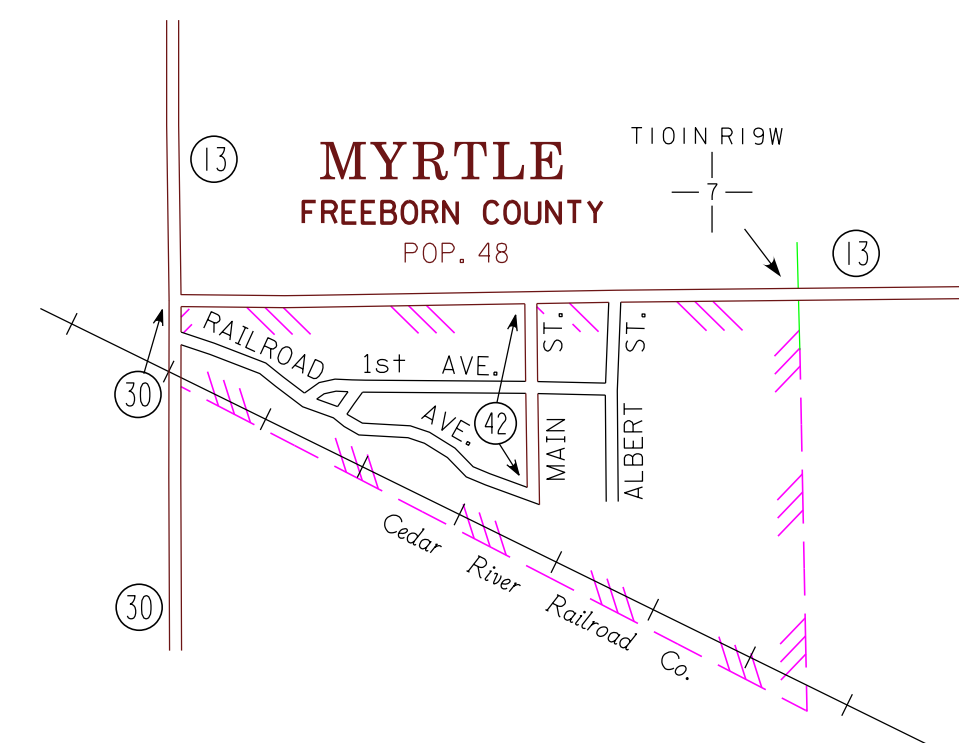
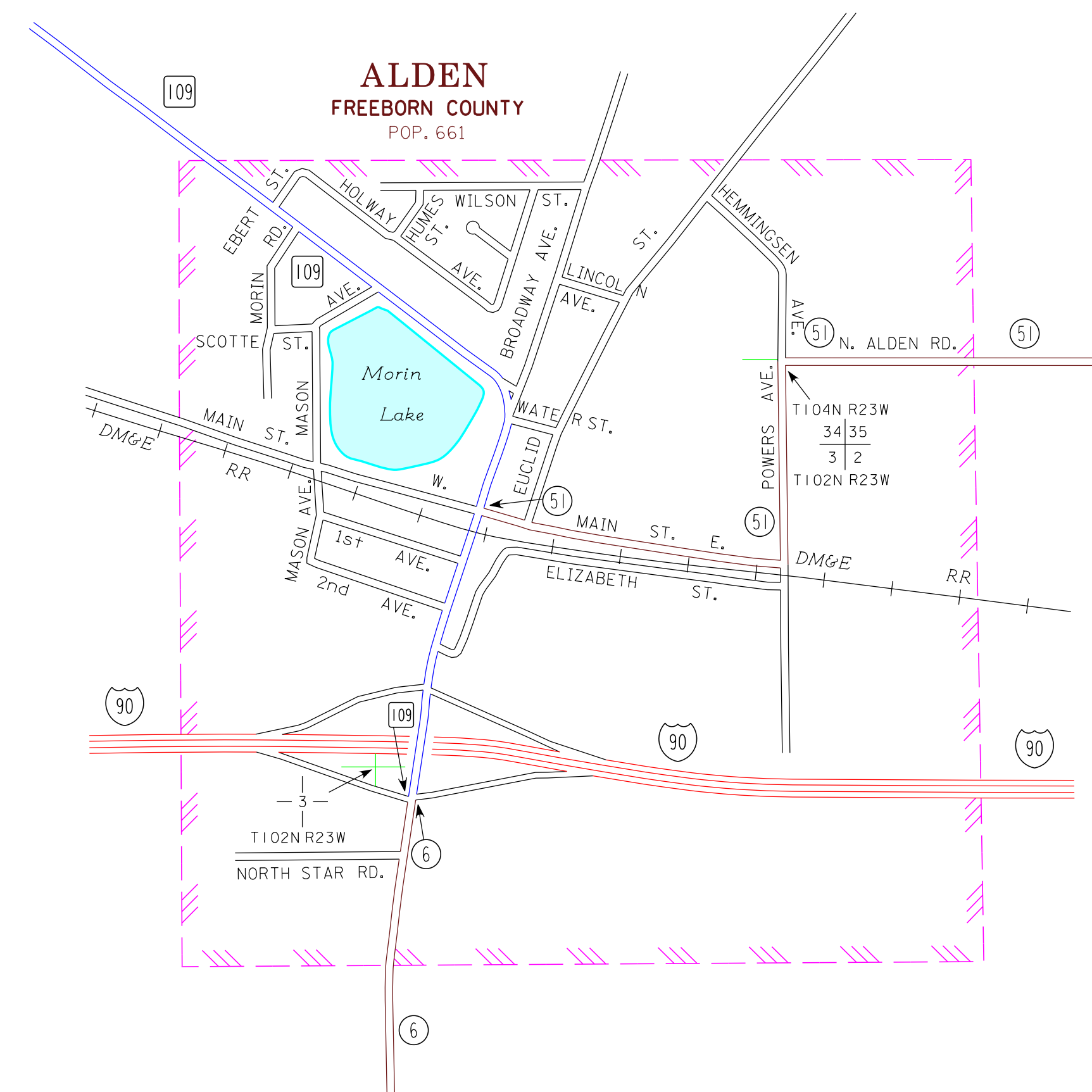
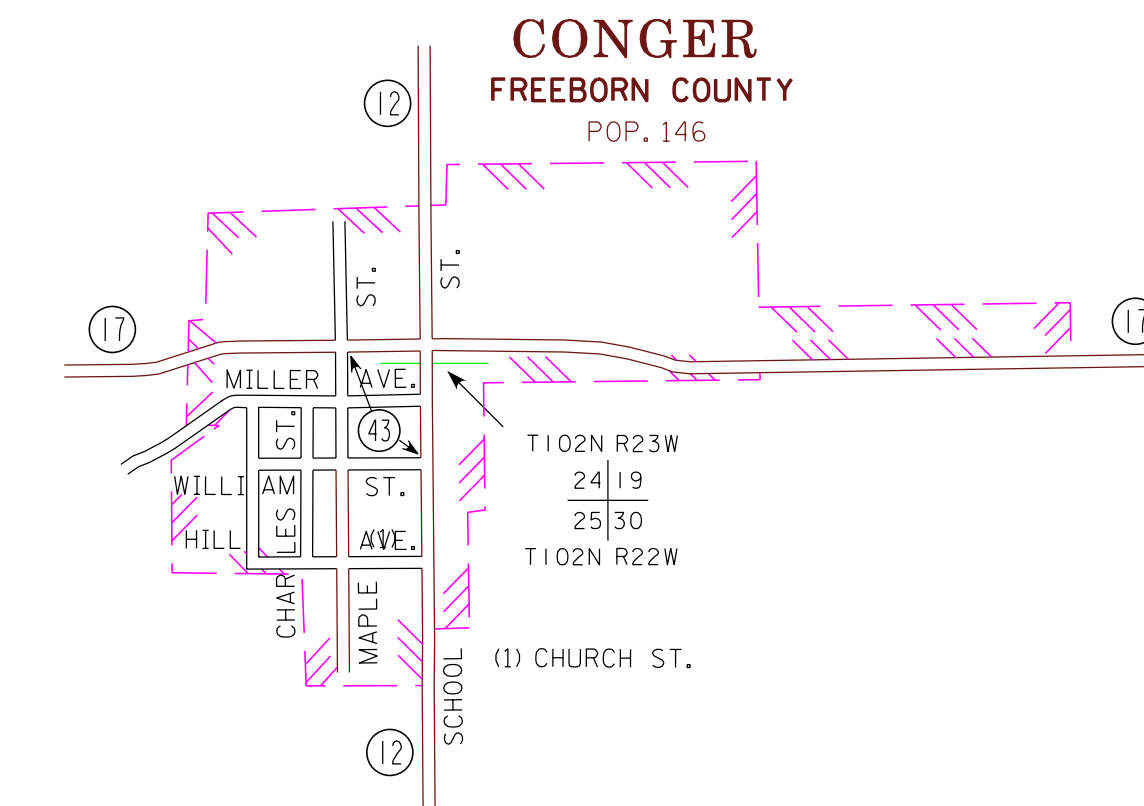
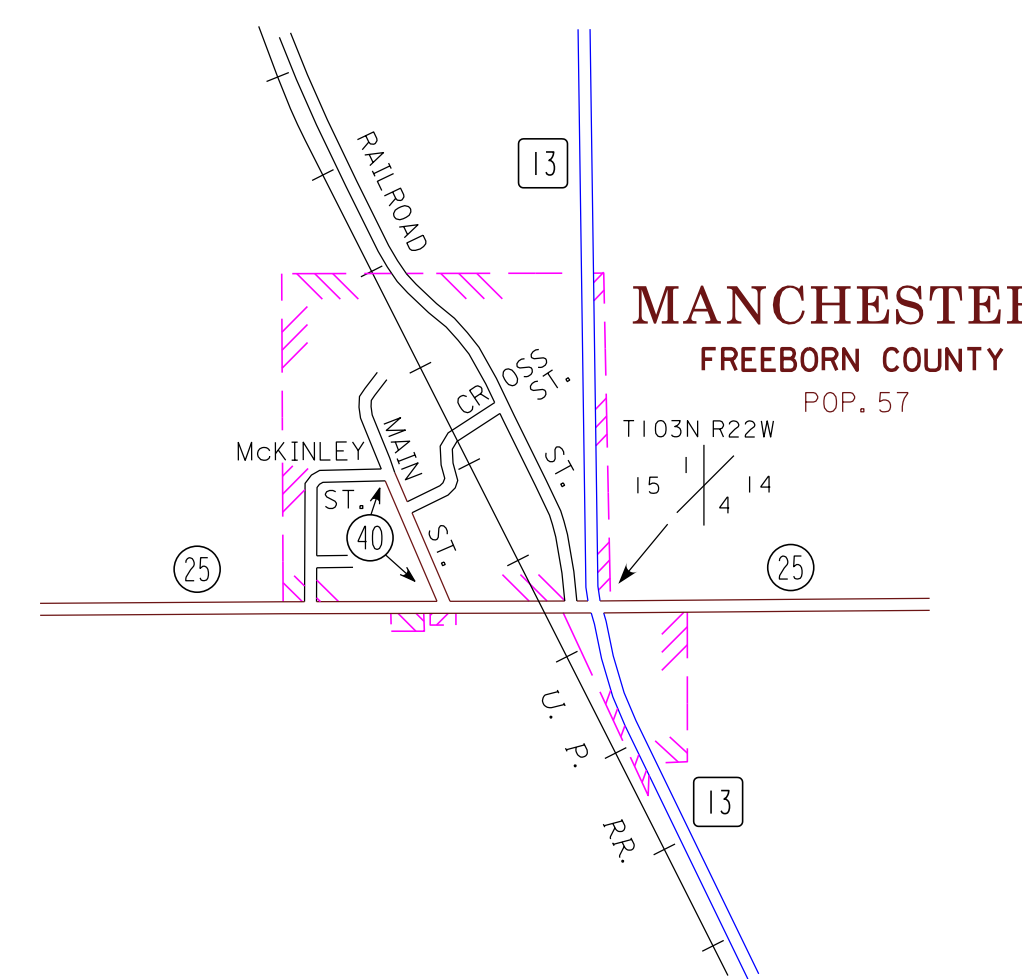
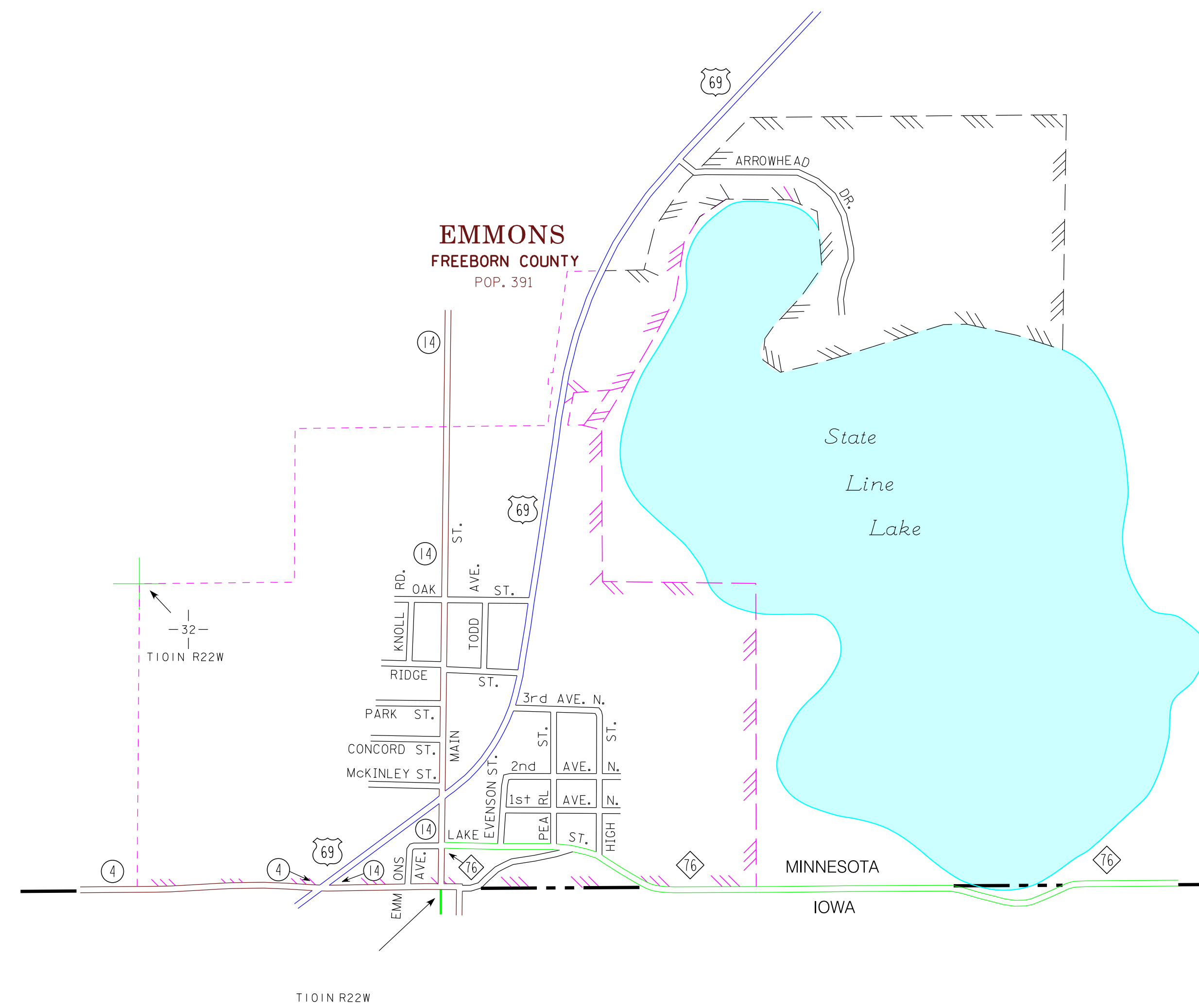


2015
BASIC DATA - 2009



LEGEND

- INTERSTATE TRUNK HIGHWAY.....(35)
- U.S. TRUNK HIGHWAY.....(10)
- STATE TRUNK HIGHWAY.....(55)
- COUNTY STATE AID HIGHWAY.....(23)
- COUNTY ROAD.....(19)
- PUBLIC ROAD.....
- PRIVATE ROAD.....
- CORPORATE LIMITS.....



MUNICIPALITIES SHOWN
ON THIS SHEET

- ALDEN
- CONGER
- EMMONS
- GLENVILLE
- MANCHESTER
- MYRTLE

To request information from this document in an alternative format,
call 651-366-4718 or 1-800-657-3774 (Greater Minnesota);
711 or 1-800-627-3529 (Minnesota Relay). You may also send
an e-mail to ADRequest.dot@state.mn.us.
(Please request at least one week in advance).

NOTE: 2010 U.S. CENSUS FIGURES SHOWN FOR ALL MUNICIPALITIES UNLESS OTHERWISE STATED.