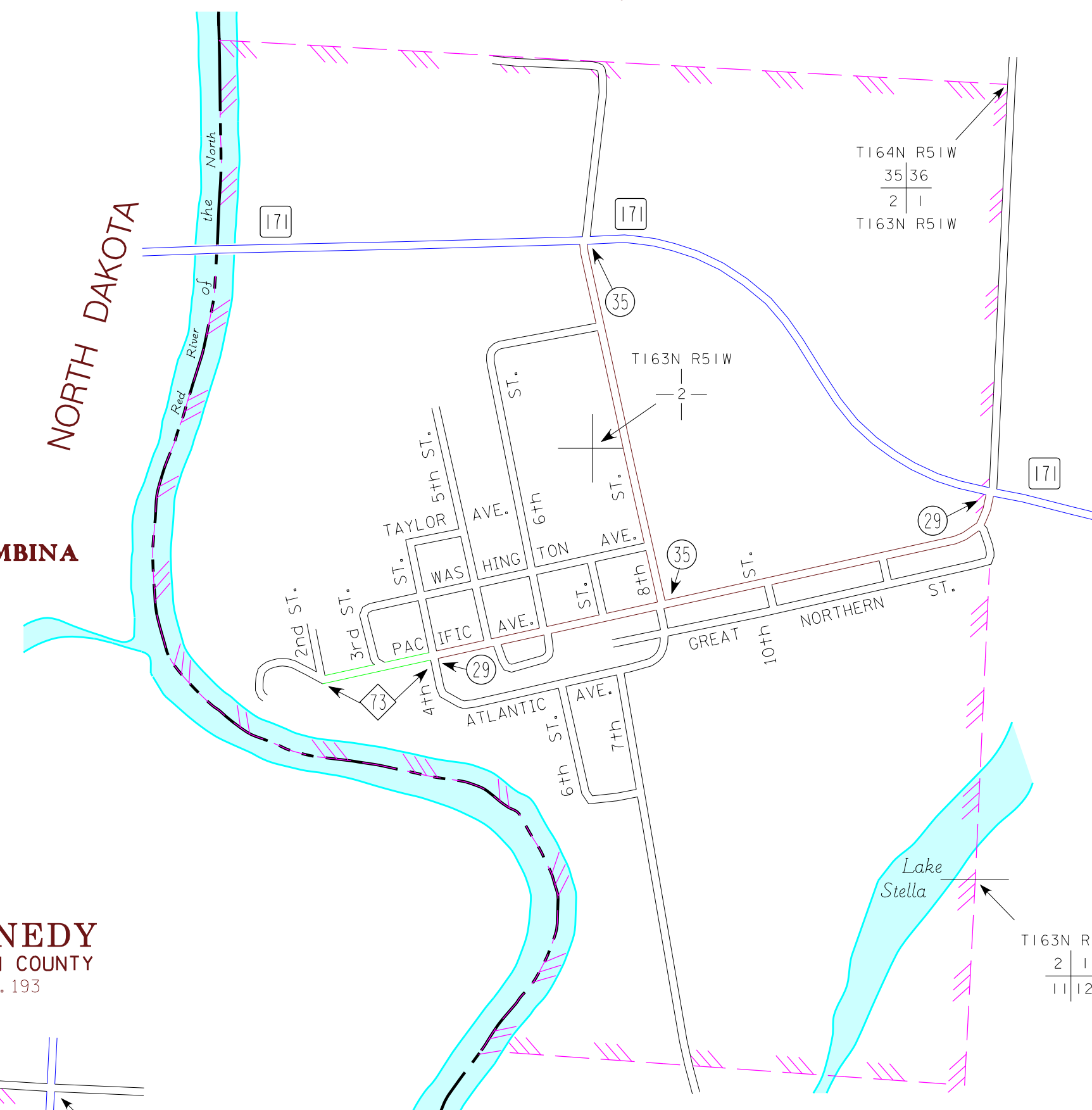
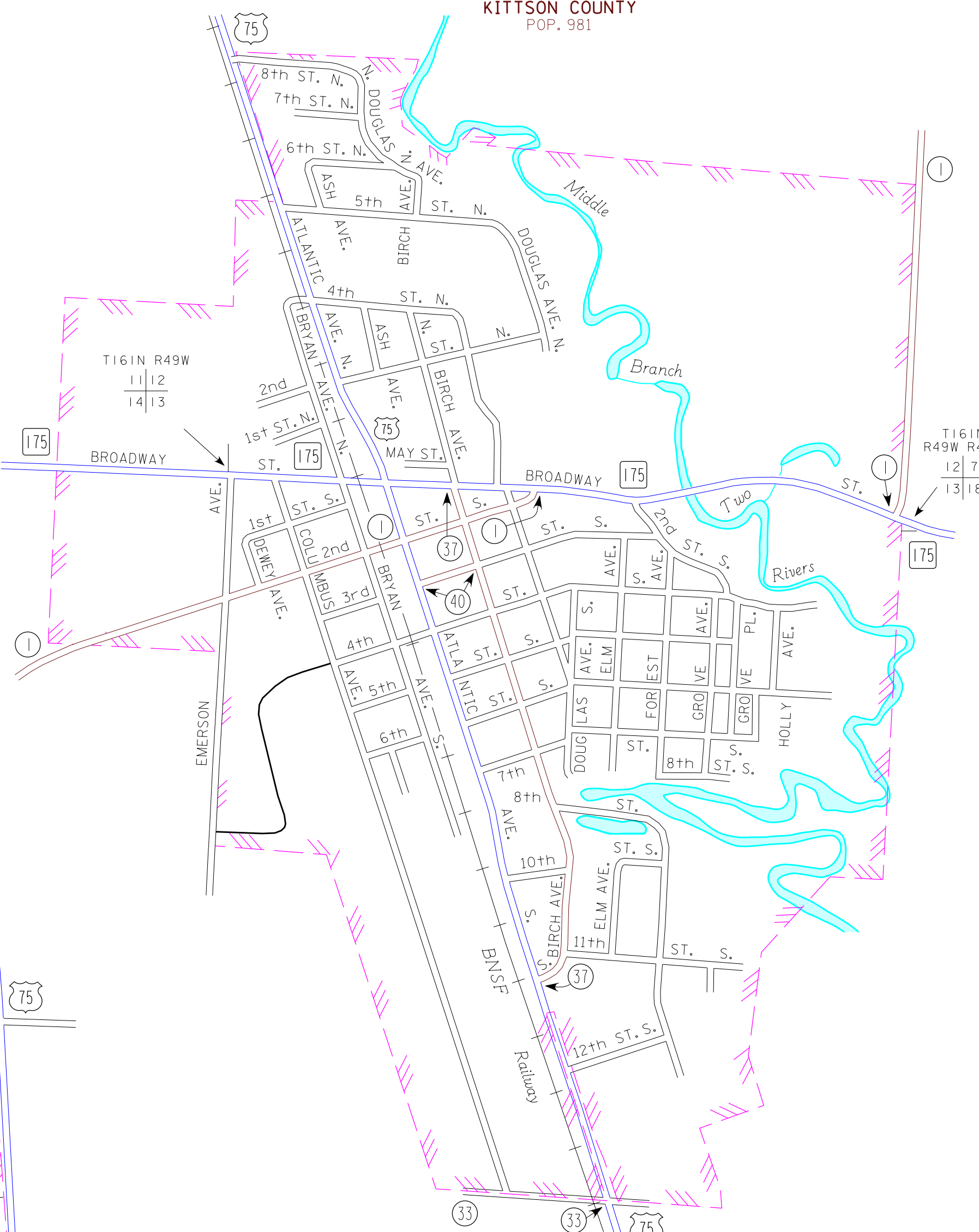


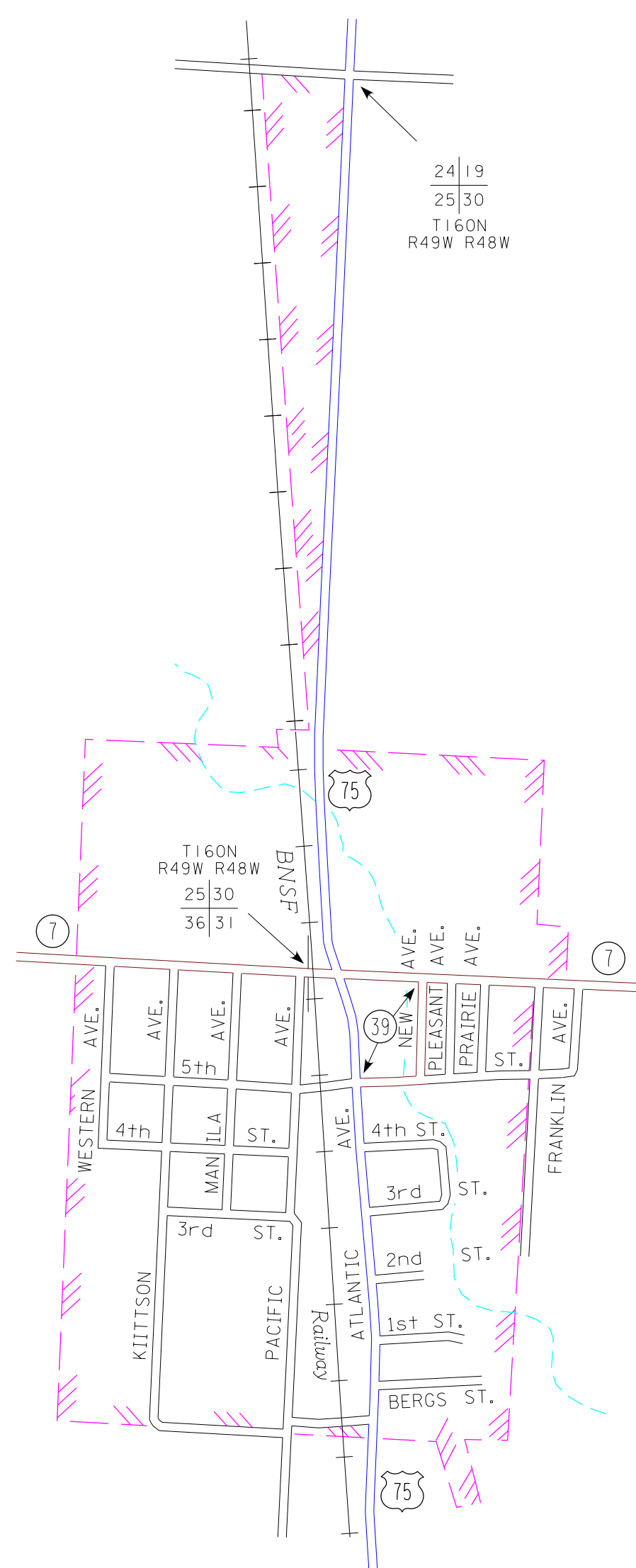
ST. VINCENT
KITTSON COUNTY
POP. 64



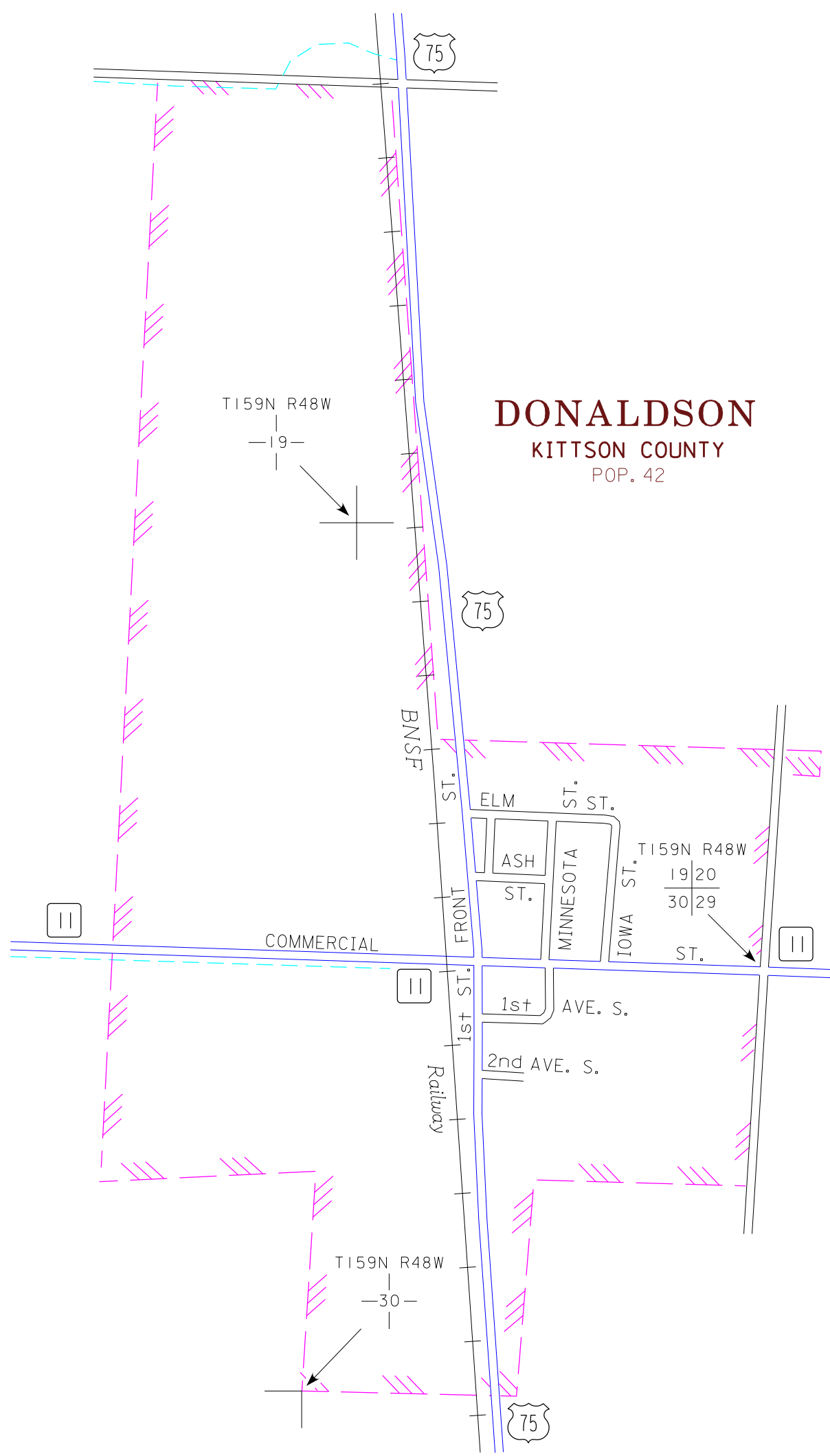
HALLOCK
KITTSON COUNTY
POP. 981



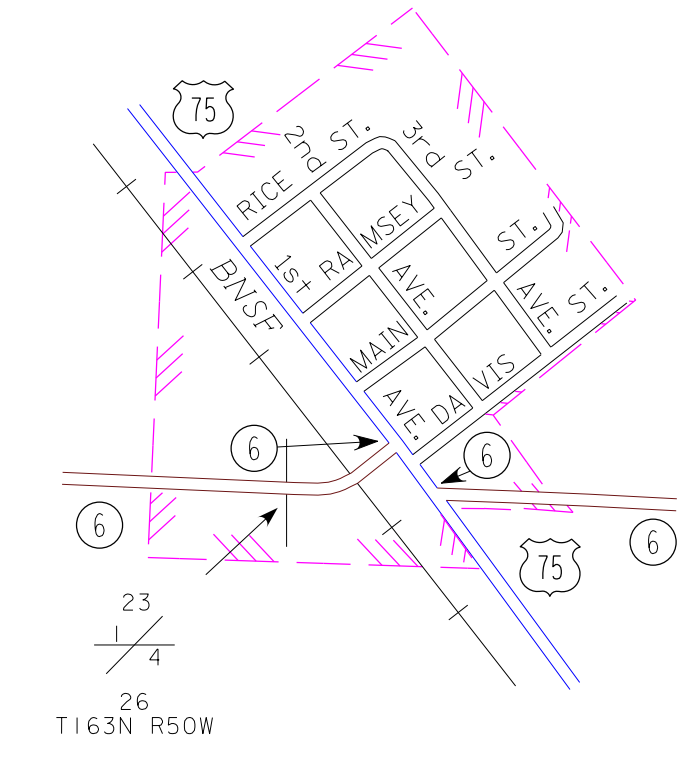
KENNEDY
KITTSON COUNTY
POP. 193



DONALDSON
KITTSON COUNTY
POP. 42

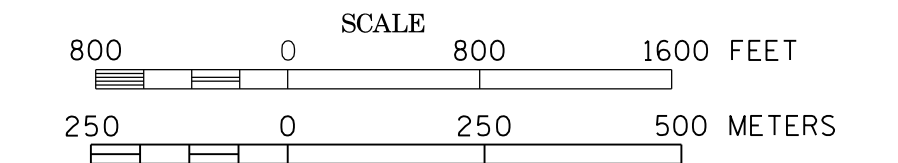


HUMBOLDT
KITTSON COUNTY
POP. 45

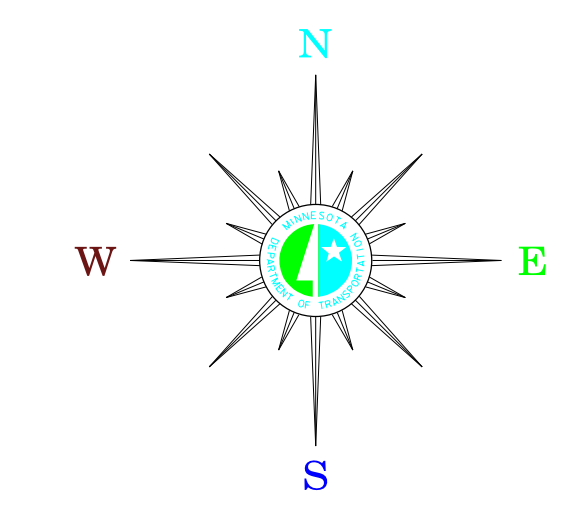


MUNICIPALITIES OF
KITTSON CO.

PREPARED BY THE
MINNESOTA DEPARTMENT OF TRANSPORTATION
OFFICE OF TRANSPORTATION SYSTEM MANAGEMENT
IN COOPERATION WITH
U.S. DEPARTMENT OF TRANSPORTATION
FEDERAL HIGHWAY ADMINISTRATION



2015
BASIC DATA - 2013



LEGEND

- INTERSTATE TRUNK HIGHWAY..... (I-35)
- U.S. TRUNK HIGHWAY..... (US-75)
- STATE TRUNK HIGHWAY..... (ST-55)
- COUNTY STATE AID HIGHWAY..... (CSA-23)
- COUNTY ROAD..... (CR-11)
- PUBLIC ROAD.....
- PRIVATE ROAD.....
- CORPORATE LIMITS.....

- MUNICIPALITIES SHOWN
ON THIS SHEET
- DONALDSON
 - HALLOCK
 - HUMBOLDT
 - KENNEDY
 - ST. VINCENT

To request information from this document in an alternative format, call 651-366-4718 or 1-800-657-3774 (Greater Minnesota); 711 or 1-800-627-3529 (Minnesota Relay). You may also send an e-mail to ADArequest.dot@state.mn.us. (Please request at least one week in advance).

NOTE: 2010 U.S. CENSUS FIGURES SHOWN FOR ALL MUNICIPALITIES UNLESS OTHERWISE STATED.