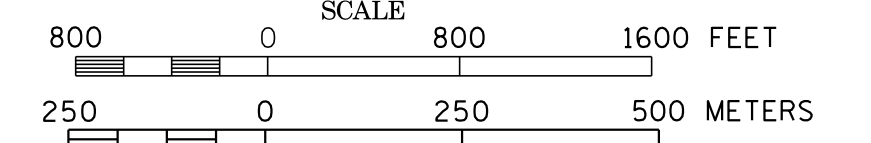
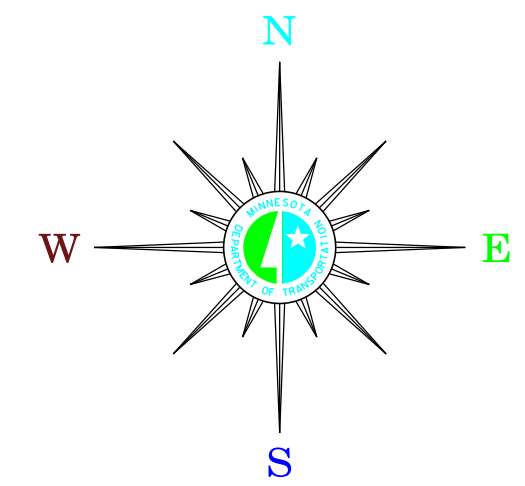


MUNICIPALITIES OF  
**MARSHALL CO.**

PREPARED BY THE  
MINNESOTA DEPARTMENT OF TRANSPORTATION  
OFFICE OF TRANSPORTATION SYSTEM MANAGEMENT  
IN COOPERATION WITH  
U.S. DEPARTMENT OF TRANSPORTATION  
FEDERAL HIGHWAY ADMINISTRATION



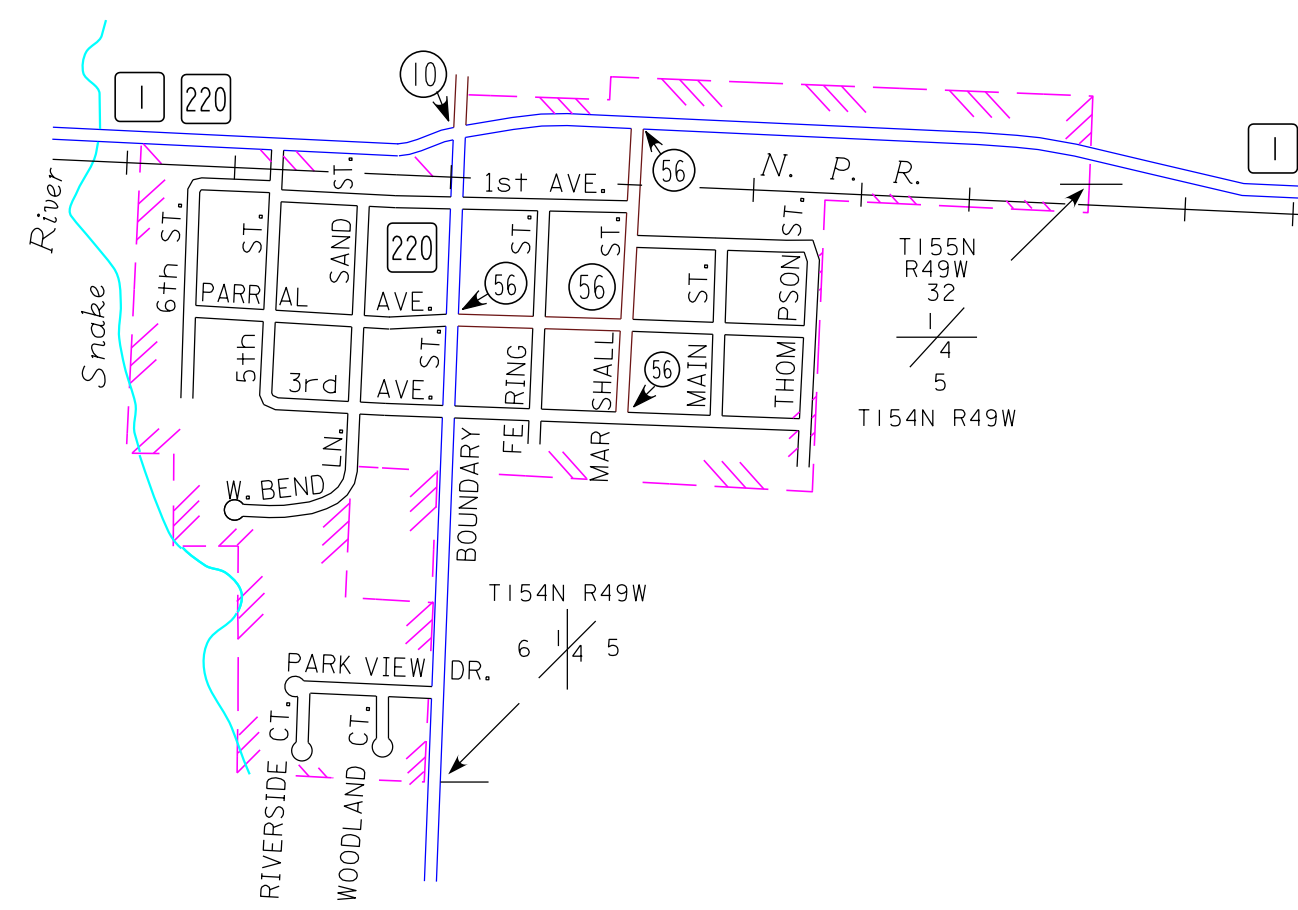
**2015**  
BASIC DATA - 2013



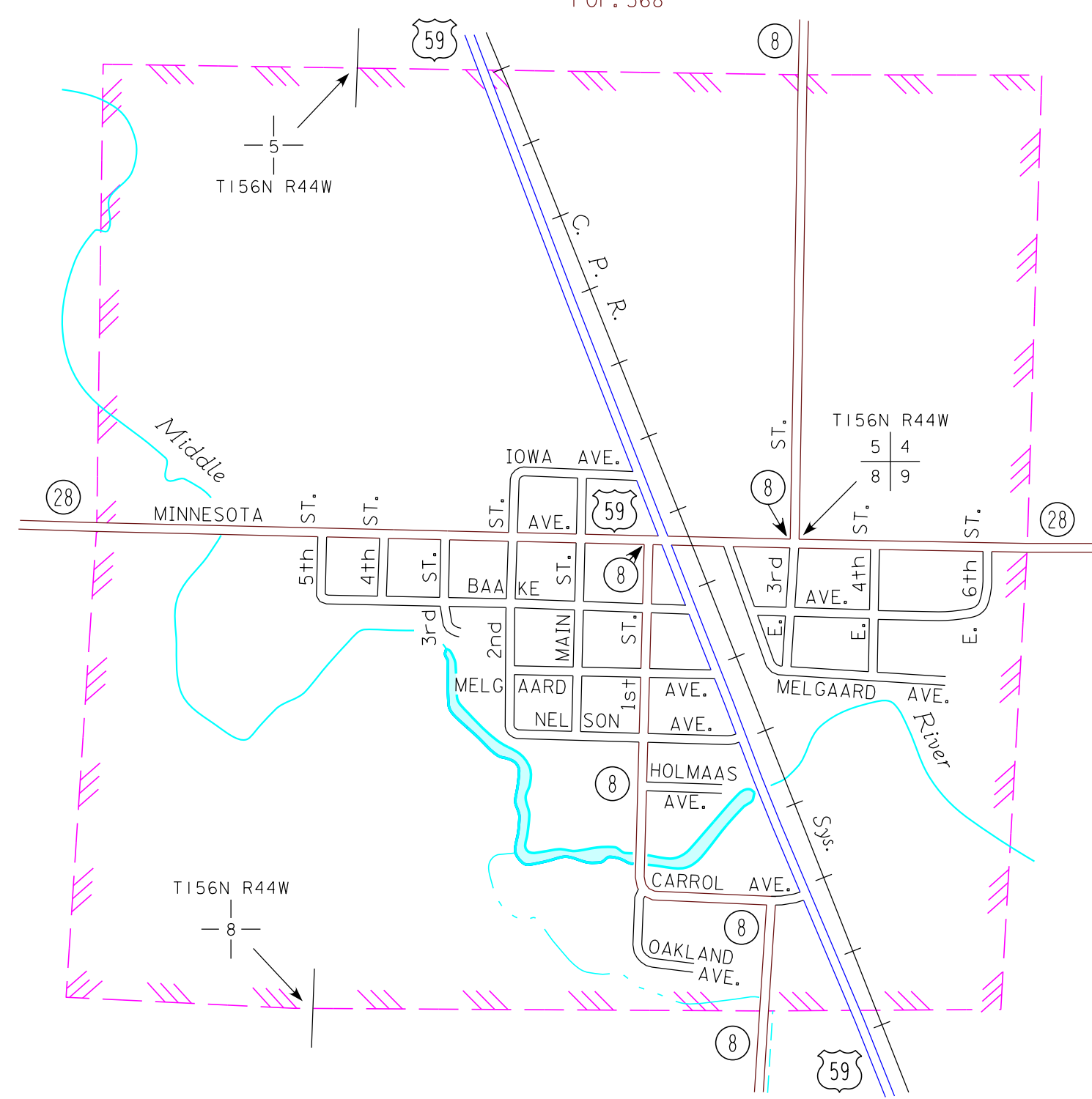
**LEGEND**

- INTERSTATE TRUNK HIGHWAY..... (I-35)
- U.S. TRUNK HIGHWAY..... (10)
- STATE TRUNK HIGHWAY..... (55)
- COUNTY STATE AID HIGHWAY..... (28)
- COUNTY ROAD..... (8)
- PUBLIC ROAD..... (89)
- PRIVATE ROAD..... (54)
- CORPORATE LIMITS.....

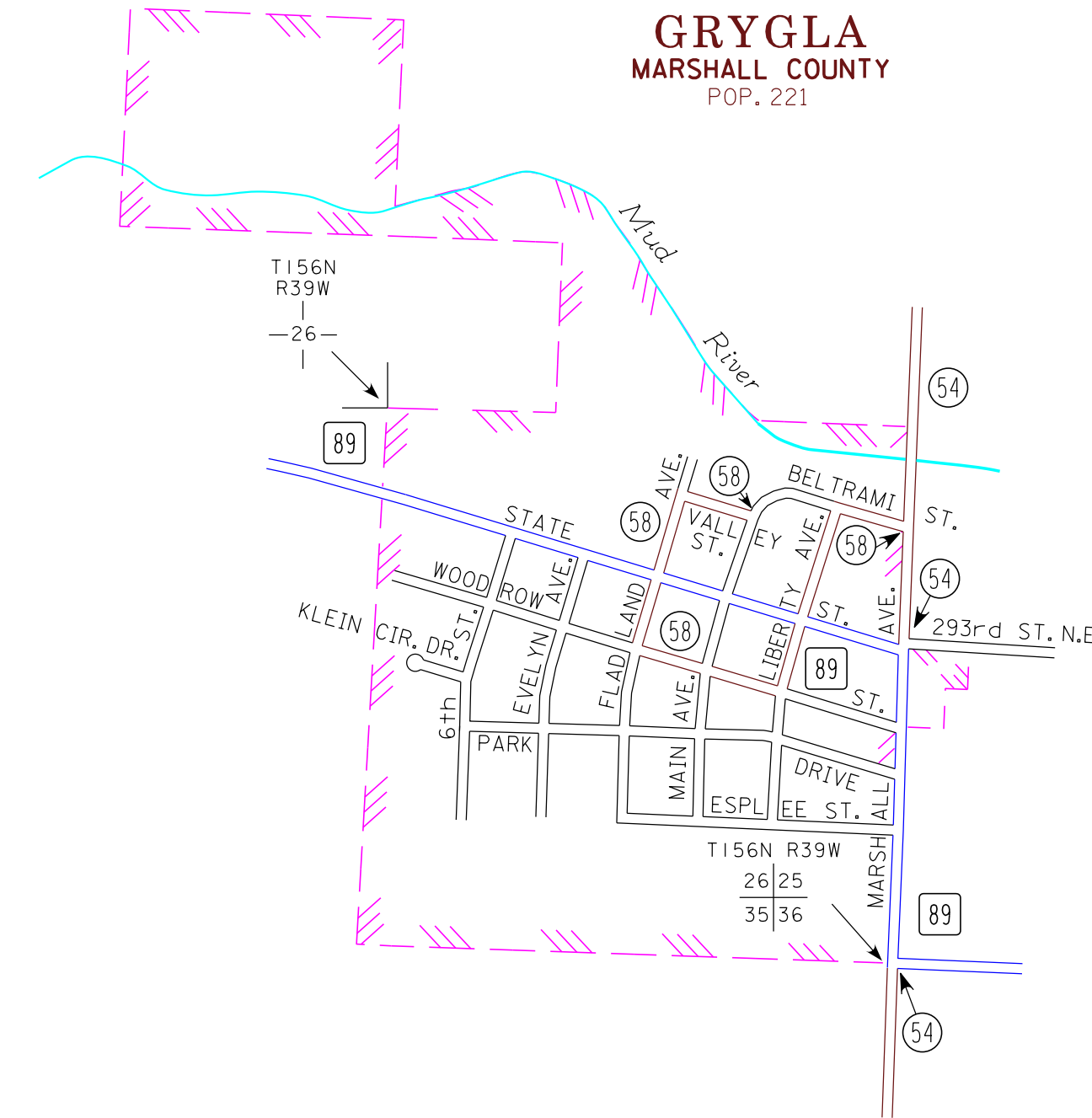
**ALVARADO**  
MARSHALL COUNTY  
POP. 363



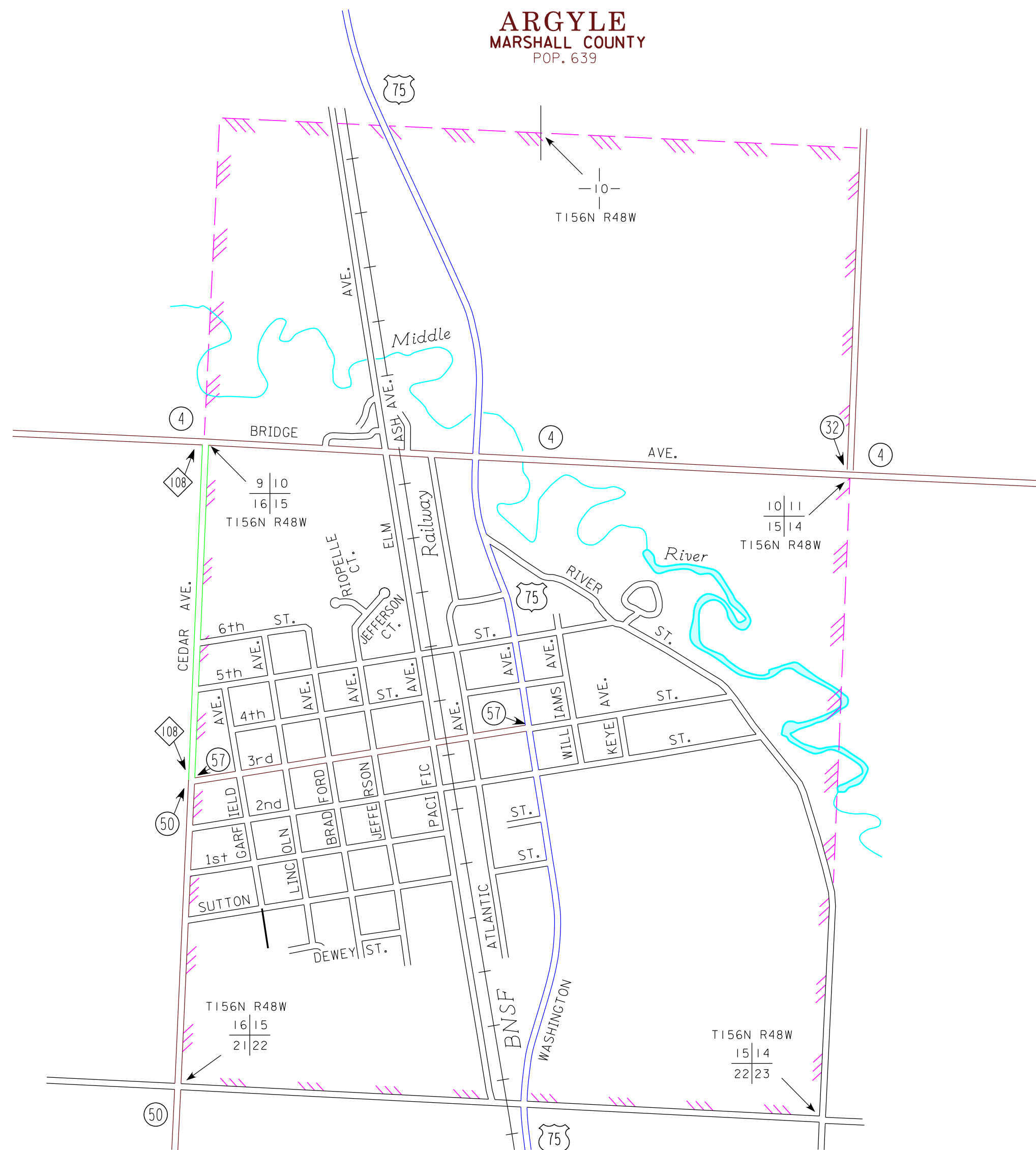
**NEWFOLDEN**  
MARSHALL COUNTY  
POP. 368



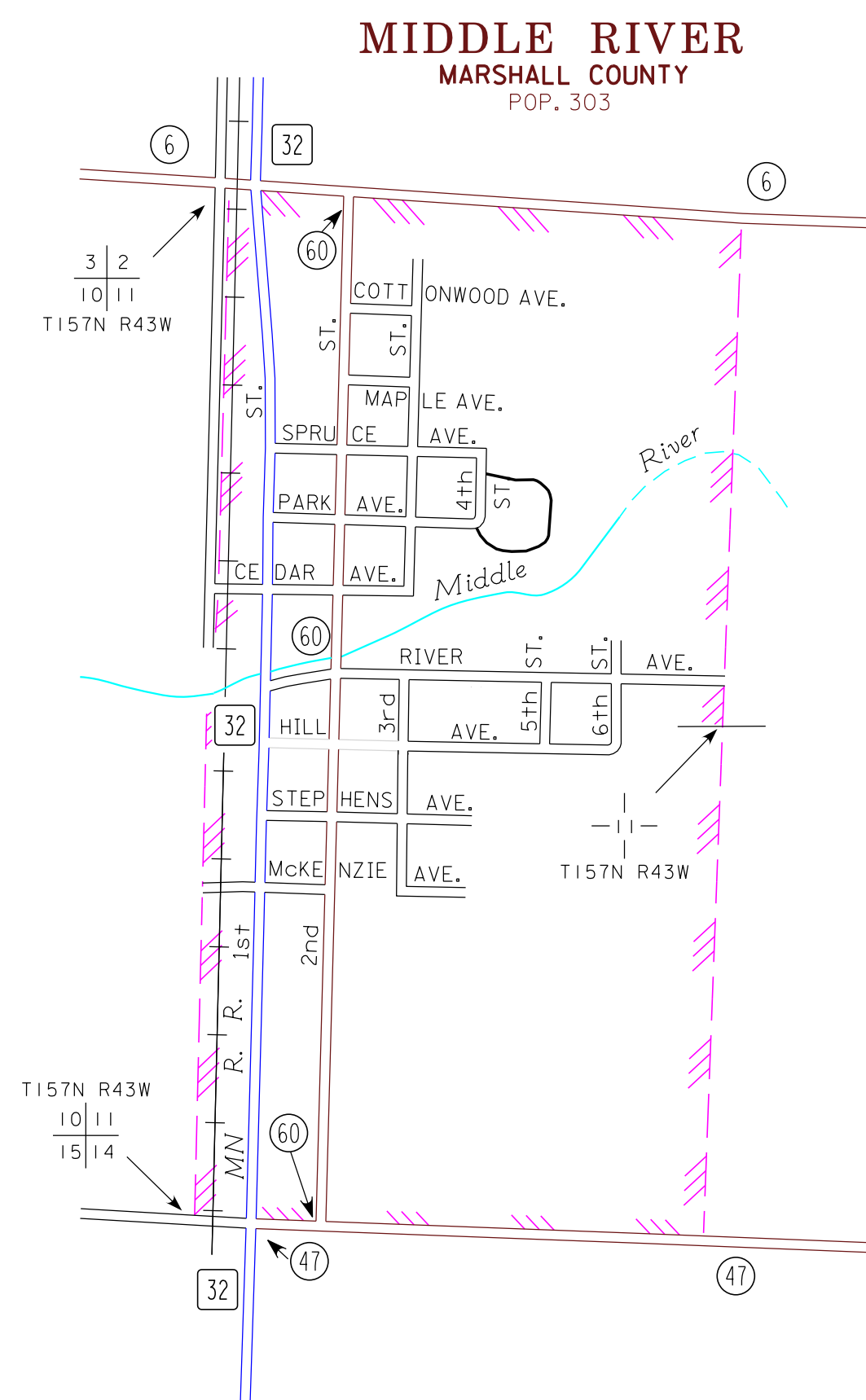
**GRYGLA**  
MARSHALL COUNTY  
POP. 221



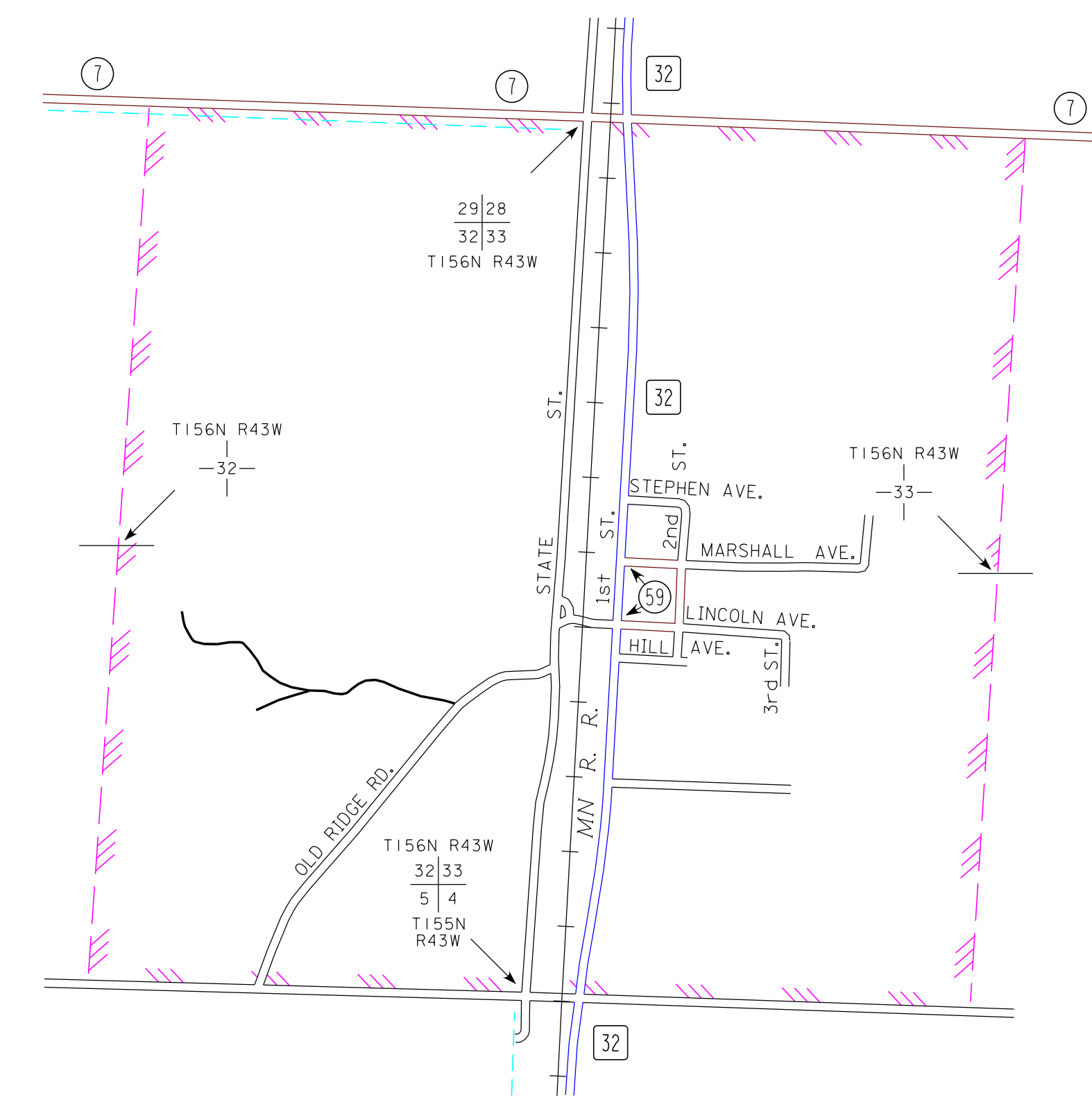
**ARGYLE**  
MARSHALL COUNTY  
POP. 639



**MIDDLE RIVER**  
MARSHALL COUNTY  
POP. 303



**HOLT**  
MARSHALL COUNTY  
POP. 88



MUNICIPALITIES SHOWN  
ON THIS SHEET

- ALVARADO
- ARGYLE
- GRYGLA
- HOLT
- MIDDLE RIVER
- NEWFOLDEN

To request information from this document in an alternative format, call 651-366-4718 or 1-800-657-3774 (Greater Minnesota), 711 or 1-800-627-3529 (Minnesota Relay). You may also send an e-mail to [ADRequest.dot@state.mn.us](mailto:ADRequest.dot@state.mn.us). (Please request at least one week in advance).

NOTE: 2010 U.S. CENSUS FIGURES SHOWN FOR ALL MUNICIPALITIES UNLESS OTHERWISE STATED.