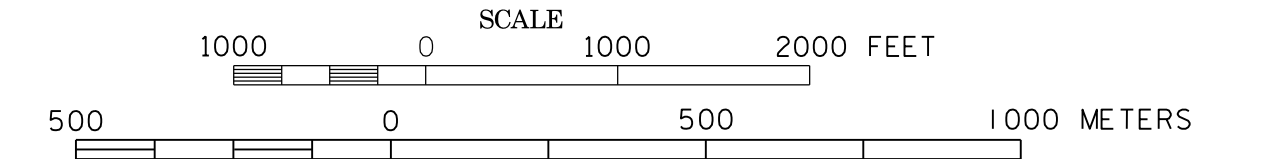
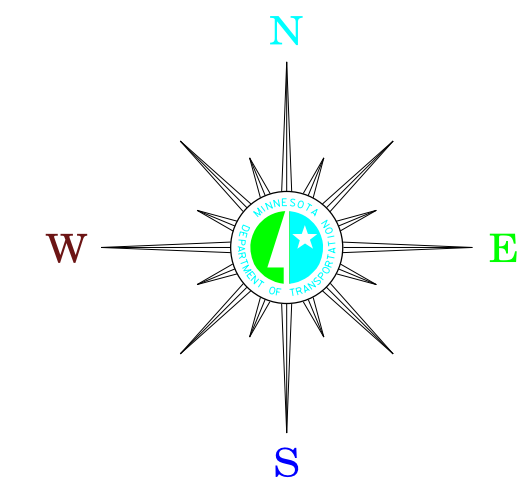


MUNICIPALITIES OF  
**PIPESTONE CO.**

PREPARED BY THE  
MINNESOTA DEPARTMENT OF TRANSPORTATION  
OFFICE OF TRANSPORTATION SYSTEM MANAGEMENT  
IN COOPERATION WITH  
U.S. DEPARTMENT OF TRANSPORTATION  
FEDERAL HIGHWAY ADMINISTRATION

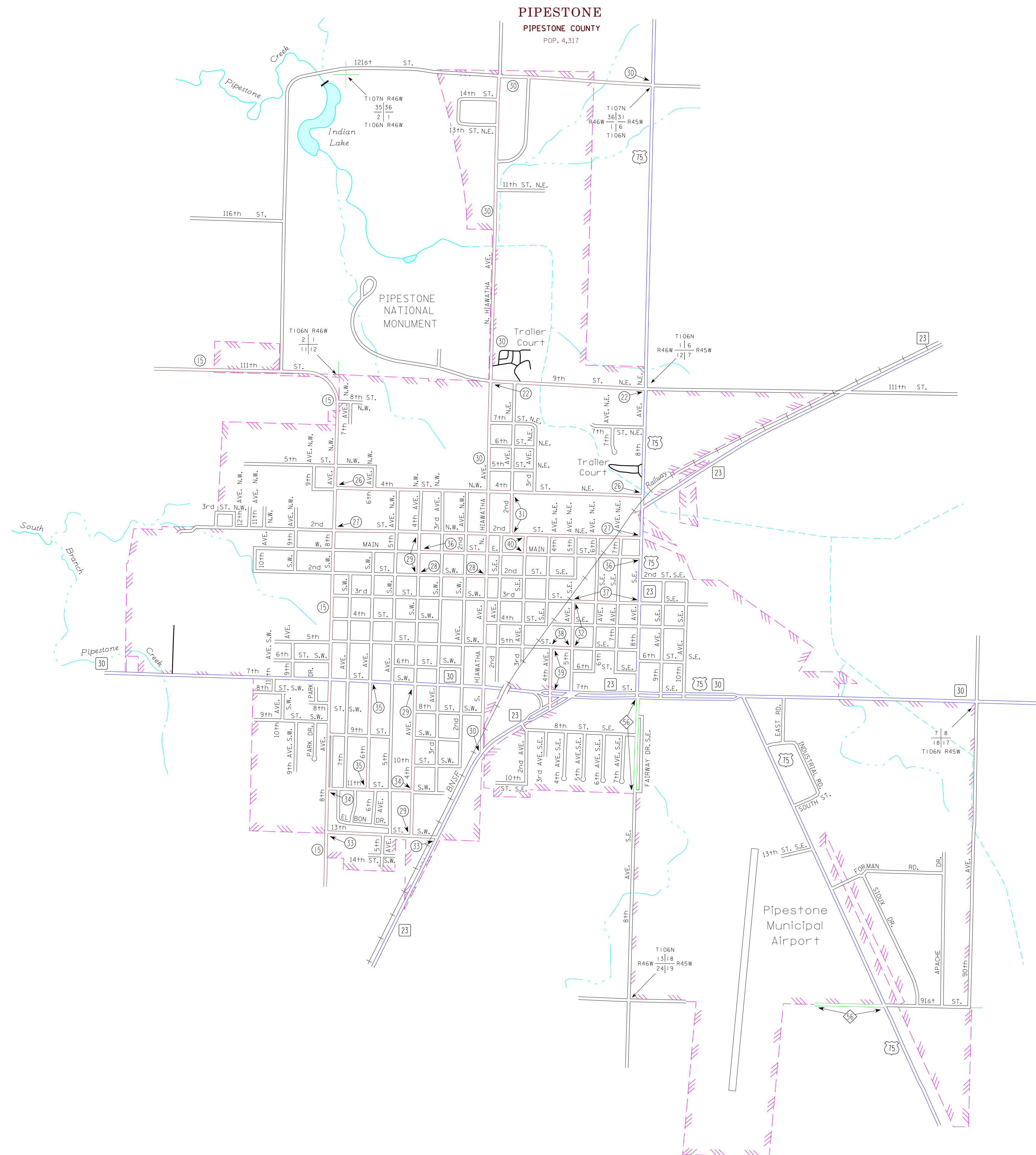


2015  
BASIC DATA - 2013



**LEGEND**

- INTERSTATE TRUNK HIGHWAY..... (I-35)
- U.S. TRUNK HIGHWAY..... (US-75)
- STATE TRUNK HIGHWAY..... (ST-23)
- COUNTY STATE AID HIGHWAY..... (CSA-30)
- COUNTY ROAD..... (CR-15)
- PUBLIC ROAD..... (PR-10)
- PRIVATE ROAD..... (PR-05)
- CORPORATE LIMITS..... (Pink dashed line)



MUNICIPALITIES SHOWN  
ON THIS SHEET  
PIPESTONE

To request information from this document in an alternative format, call 651-366-4718 or 1-800-527-3774 (Greater Minnesota); 711 or 1-800-627-3529 (Minnesota Relay). You may also send an e-mail to [ADRequest.coi@state.mn.us](mailto:ADRequest.coi@state.mn.us). (Please request at least one week in advance).

NOTE: 2010 U.S. CENSUS FIGURES SHOWN FOR ALL MUNICIPALITIES UNLESS OTHERWISE STATED.