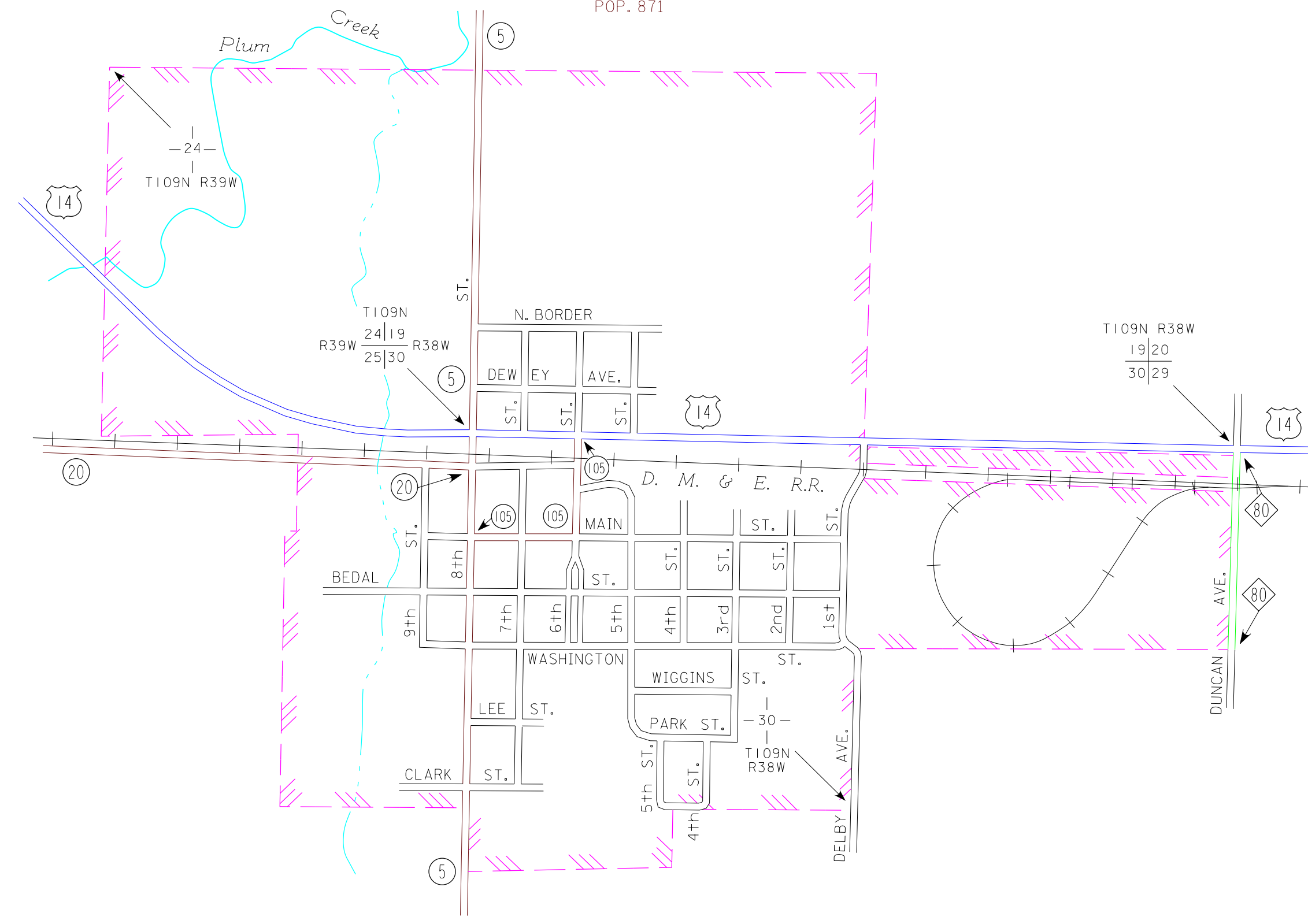
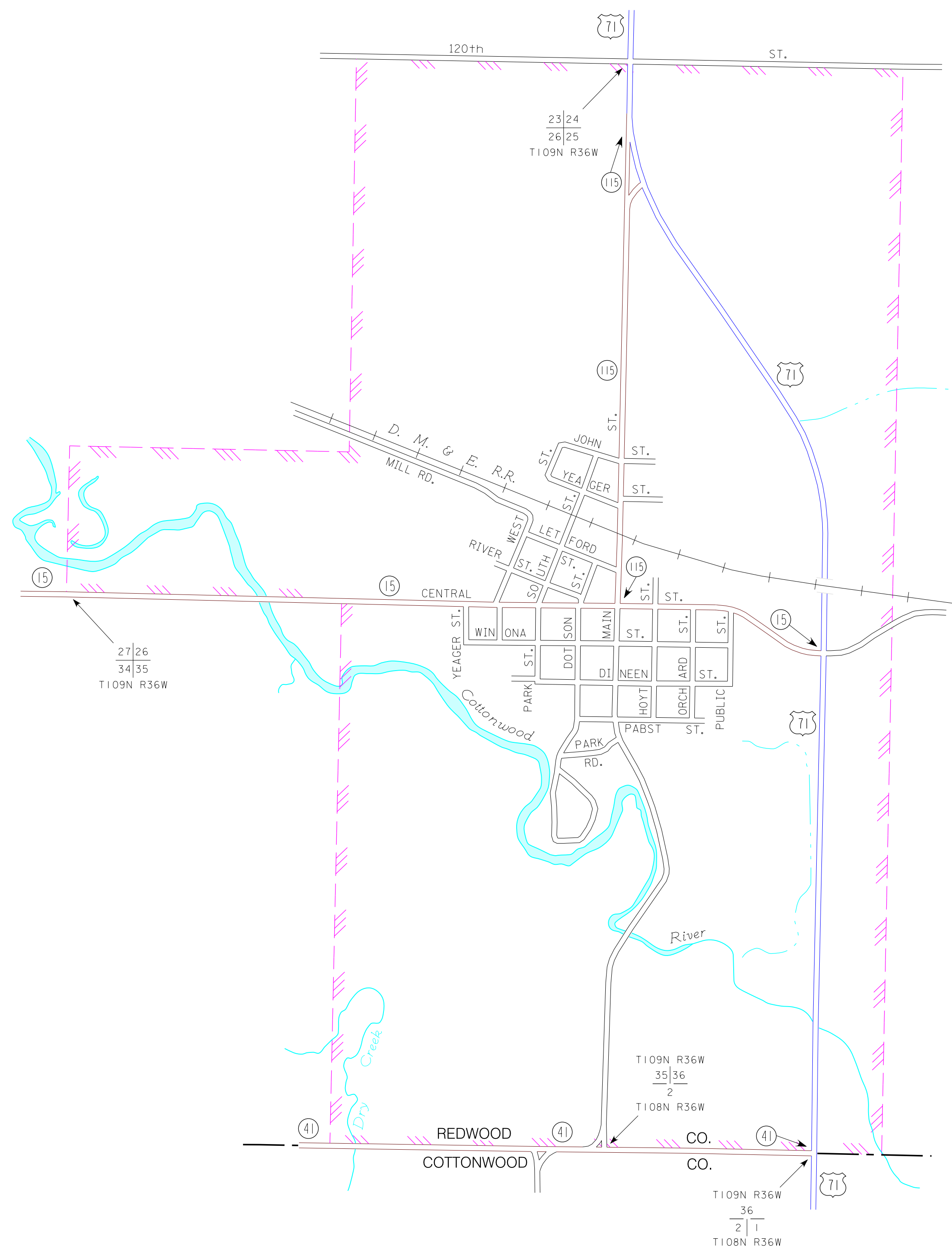


**WALNUT GROVE**  
REDWOOD COUNTY  
POP. 871

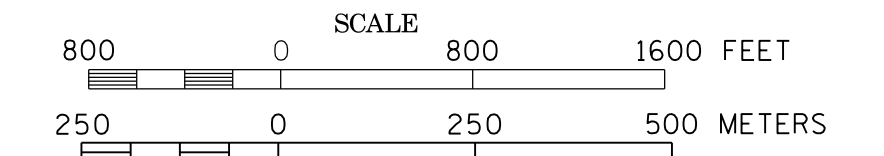


**SANBORN**  
REDWOOD COUNTY  
POP. 339

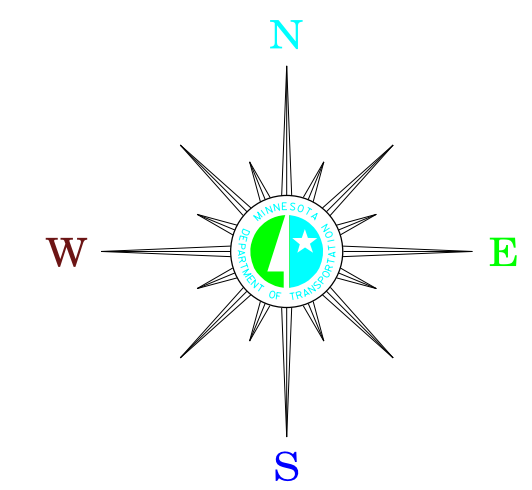


MUNICIPALITIES OF  
**REDWOOD CO.**

PREPARED BY THE  
MINNESOTA DEPARTMENT OF TRANSPORTATION  
OFFICE OF TRANSPORTATION SYSTEM MANAGEMENT  
IN COOPERATION WITH  
U.S. DEPARTMENT OF TRANSPORTATION  
FEDERAL HIGHWAY ADMINISTRATION



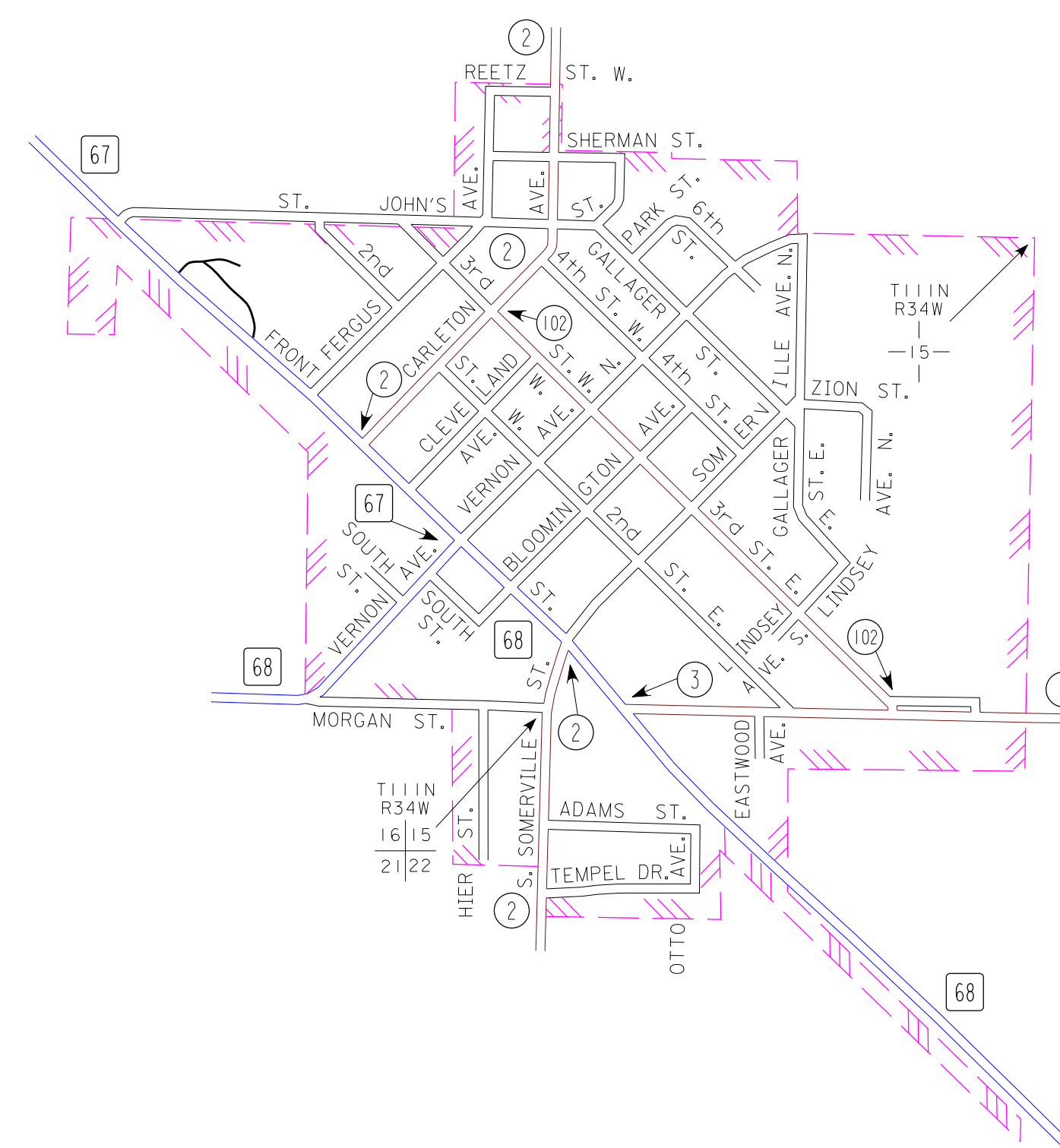
**2015**  
BASIC DATA - 2013



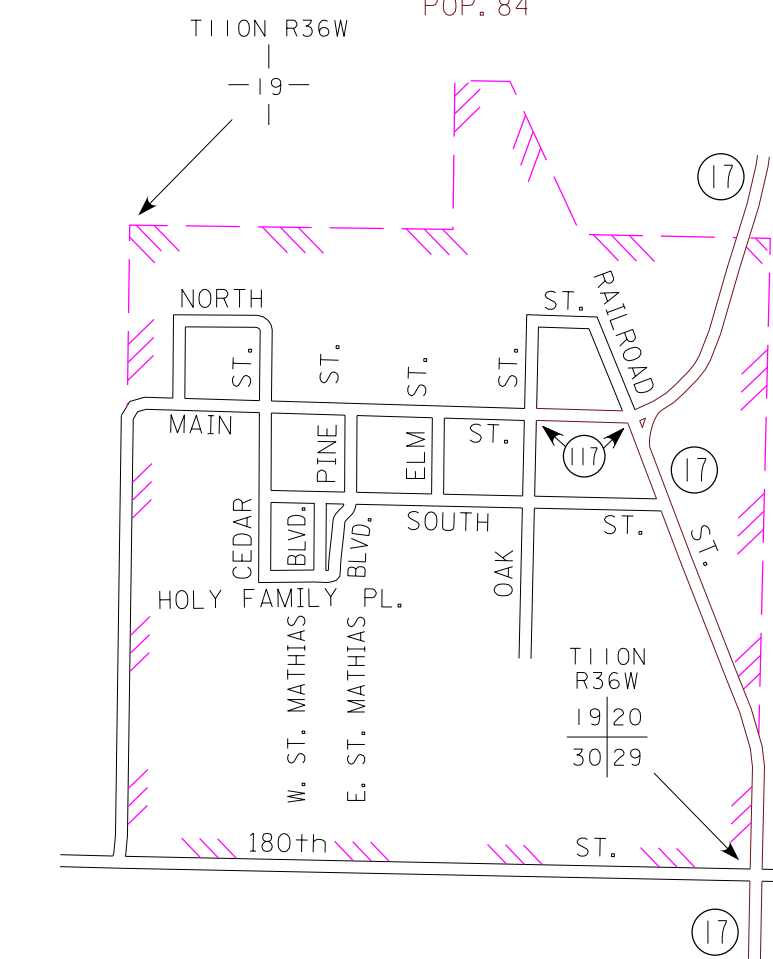
**LEGEND**

- INTERSTATE TRUNK HIGHWAY..... (I-35)
- U.S. TRUNK HIGHWAY..... (10)
- STATE TRUNK HIGHWAY..... (55)
- COUNTY STATE AID HIGHWAY..... (23)
- COUNTY ROAD..... (15)
- PUBLIC ROAD.....
- PRIVATE ROAD.....
- CORPORATE LIMITS.....

**MORGAN**  
REDWOOD COUNTY  
POP. 896



**WANDA**  
REDWOOD COUNTY  
POP. 84



MUNICIPALITIES SHOWN  
ON THIS SHEET

- MORGAN
- SANBORN
- WALNUT GROVE
- WANDA

To request information from this document in an alternative format, call 651-366-4718, or 1-800-657-3774 (Greater Minnesota); 711 or 1-800-627-3529 (Minnesota Relay). You may also send an e-mail to: ADArequest.do@state.mn.us (Please request at least one week in advance).

NOTE: 2010 U.S. CENSUS FIGURES SHOWN FOR ALL MUNICIPALITIES UNLESS OTHERWISE STATED.