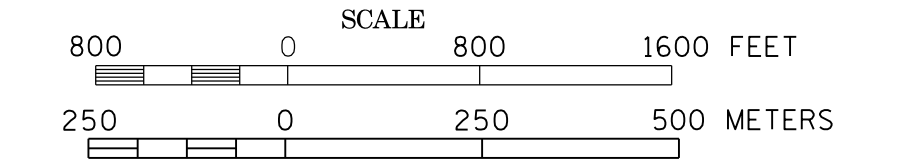
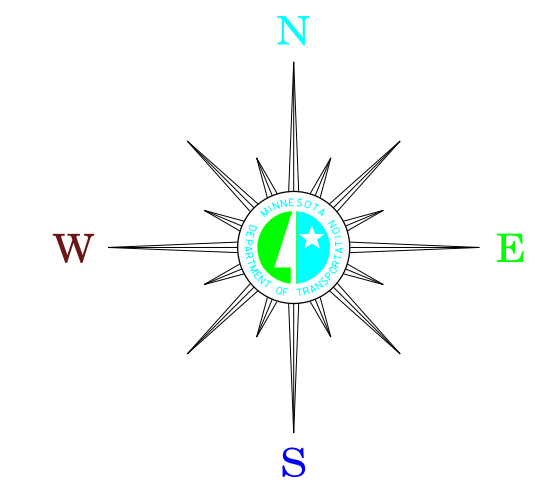


MUNICIPALITIES OF  
**REDWOOD CO.**

PREPARED BY THE  
MINNESOTA DEPARTMENT OF TRANSPORTATION  
OFFICE OF TRANSPORTATION SYSTEM MANAGEMENT  
IN COOPERATION WITH  
U.S. DEPARTMENT OF TRANSPORTATION  
FEDERAL HIGHWAY ADMINISTRATION



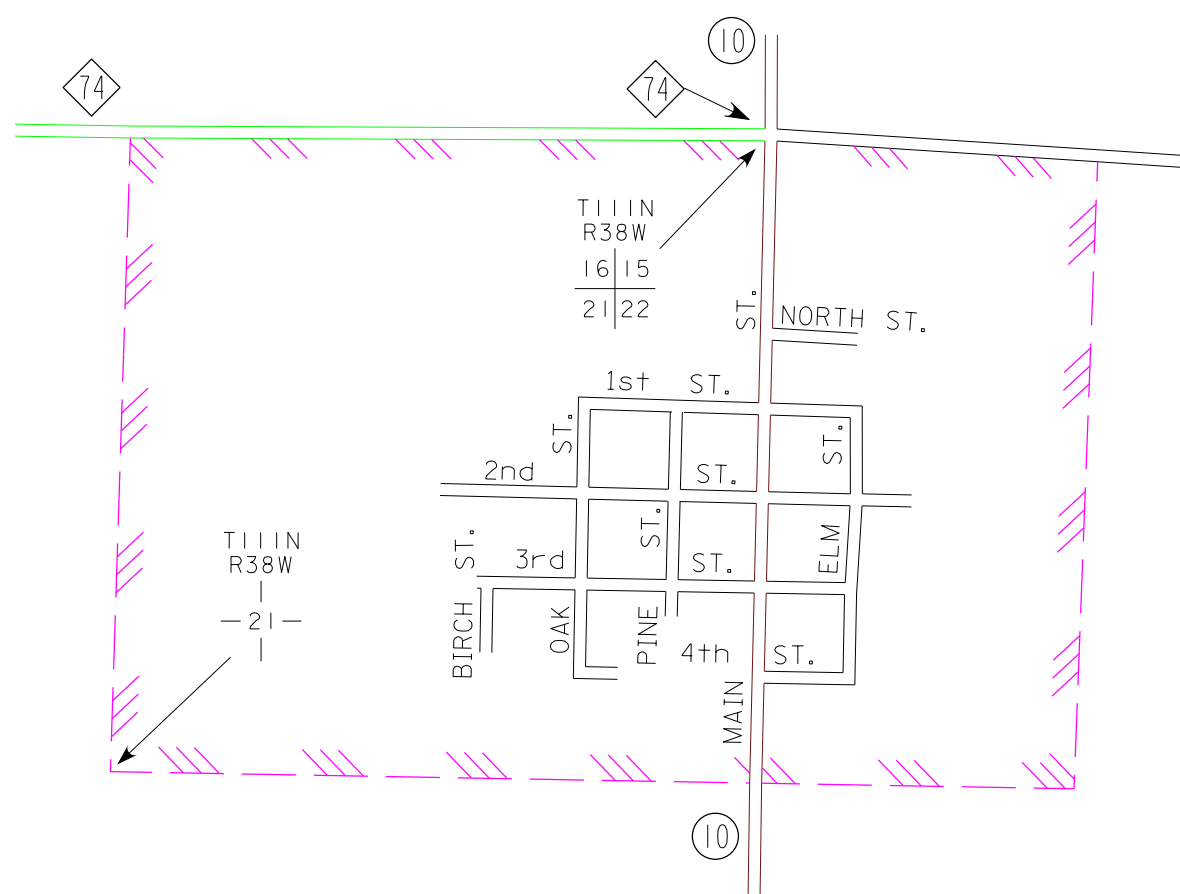
2015  
BASIC DATA - 2013



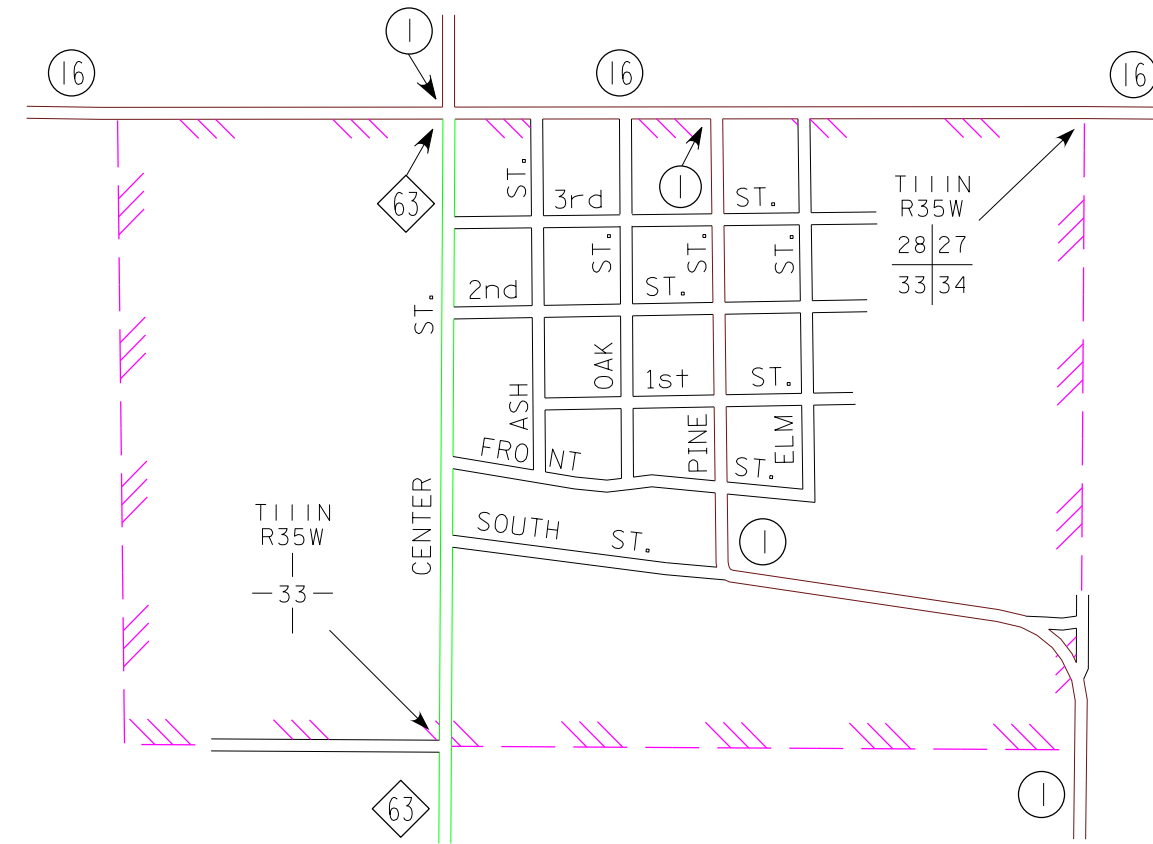
**LEGEND**

- INTERSTATE TRUNK HIGHWAY..... (I-35)
- U.S. TRUNK HIGHWAY..... (16)
- STATE TRUNK HIGHWAY..... (55)
- COUNTY STATE AID HIGHWAY..... (23)
- COUNTY ROAD..... (14)
- PUBLIC ROAD..... (10)
- PRIVATE ROAD..... (1)
- CORPORATE LIMITS.....

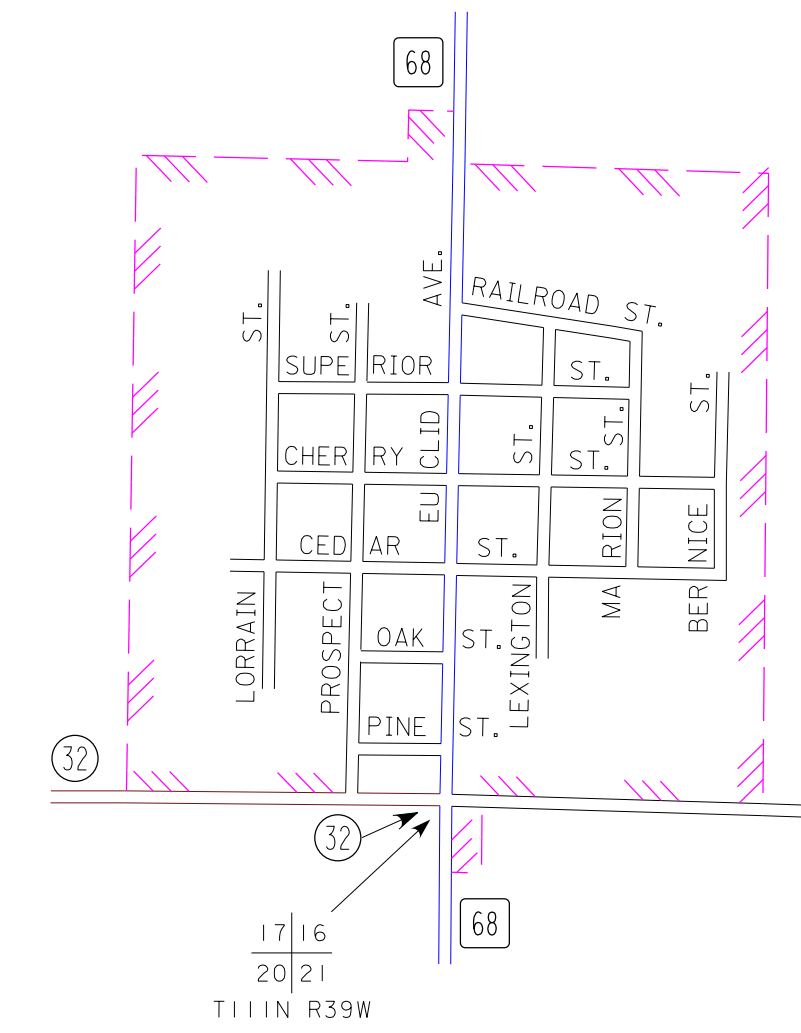
**LUCAN**  
REDWOOD COUNTY  
POP. 191



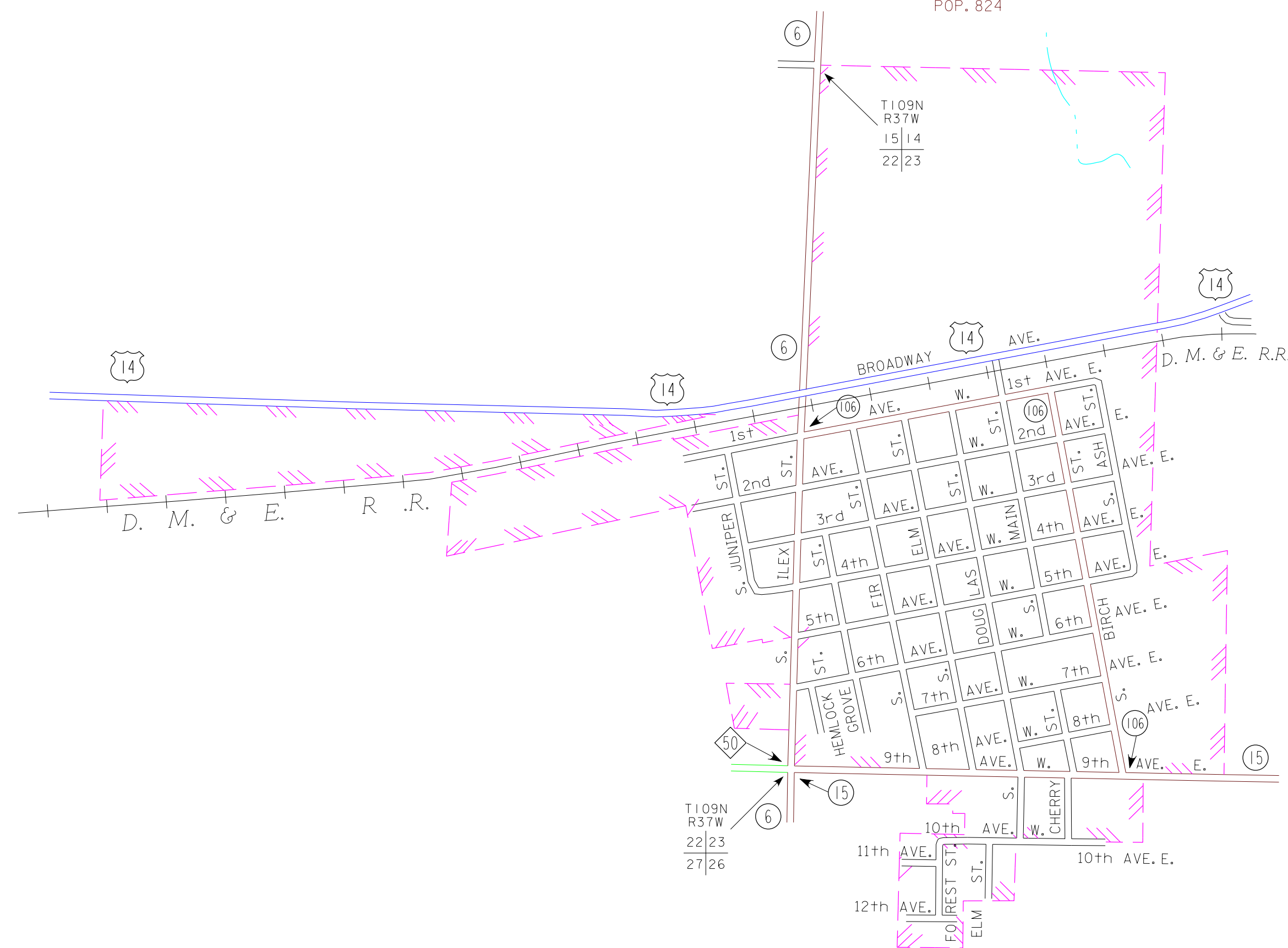
**CLEMENTS**  
REDWOOD COUNTY  
POP. 153



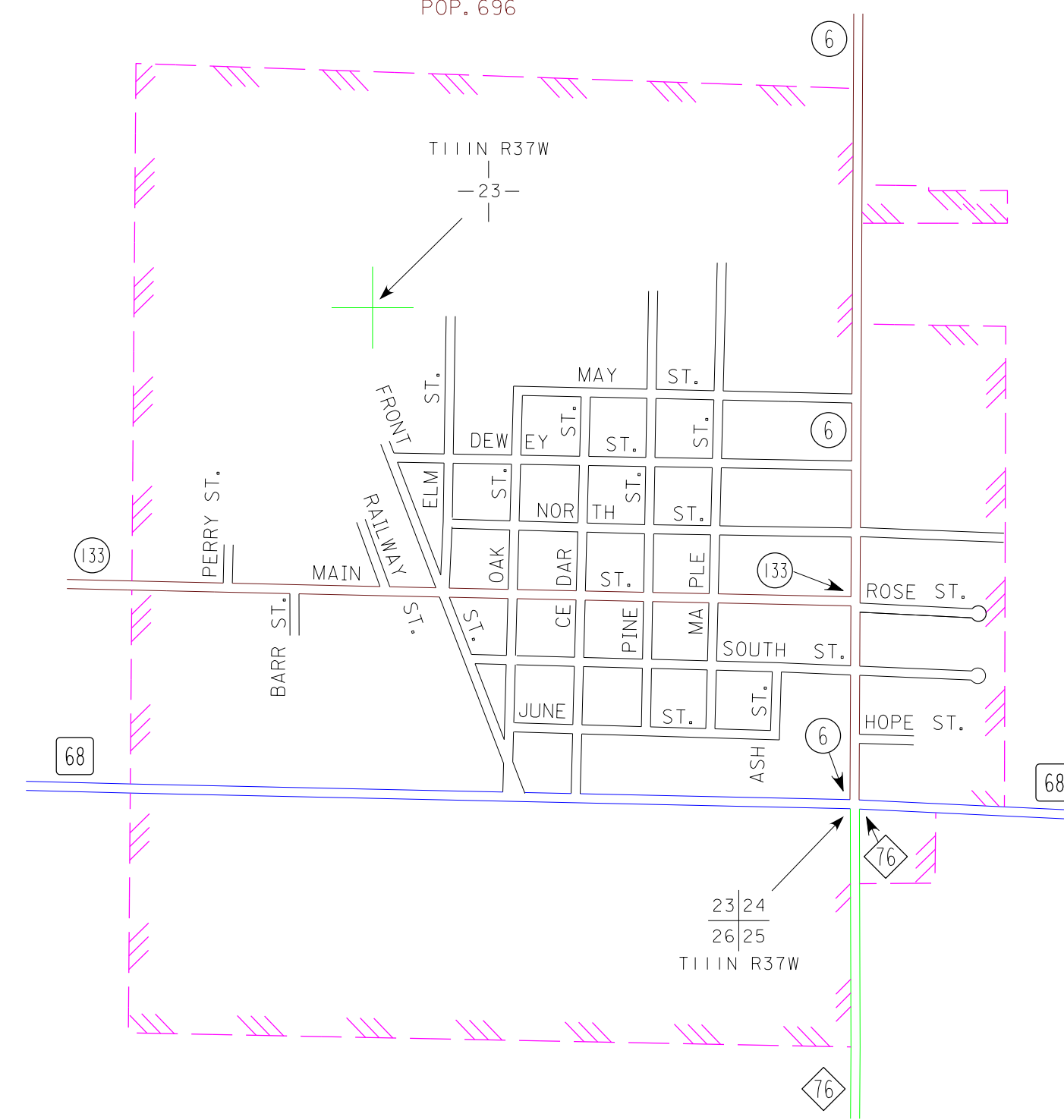
**MILROY**  
REDWOOD COUNTY  
POP. 252



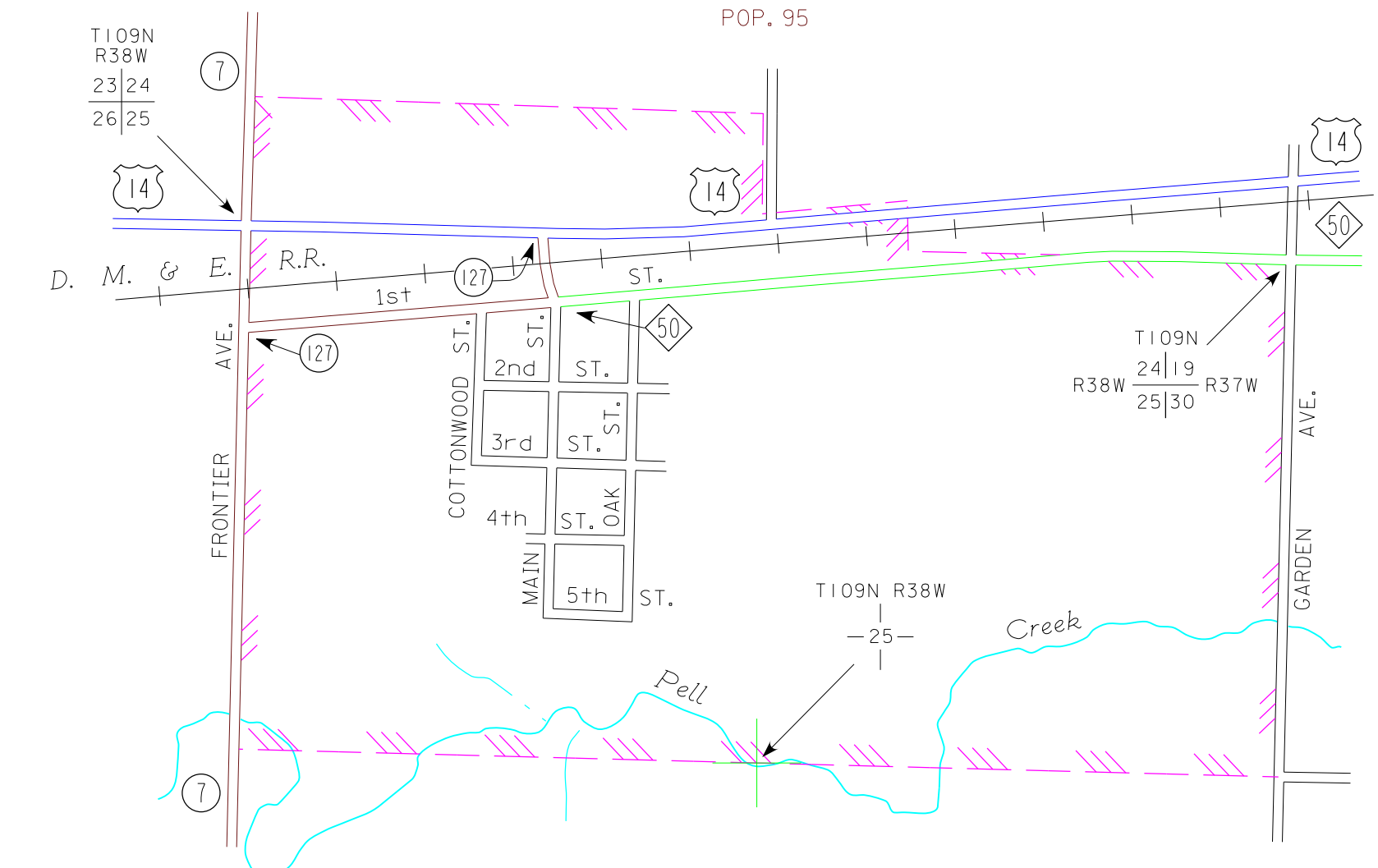
**LAMBERTON**  
REDWOOD COUNTY  
POP. 824



**WABASSO**  
REDWOOD COUNTY  
POP. 696



**REVERE**  
REDWOOD COUNTY  
POP. 95



- MUNICIPALITIES SHOWN  
ON THIS SHEET
- CLEMENTS
  - LAMBERTON
  - LUCAN
  - MILROY
  - REVERE
  - WABASSO

To request information from this document in an alternative format, call 651-668-4718 or 1-800-657-3774 (Greater Minnesota); 711 or 1-800-627-3529 (Minnesota Relay). You may also send an e-mail to: [ADArequest.co@state.mn.us](mailto:ADArequest.co@state.mn.us) (Please request at least one week in advance).

NOTE: 2010 U.S. CENSUS FIGURES SHOWN FOR ALL MUNICIPALITIES UNLESS OTHERWISE STATED.