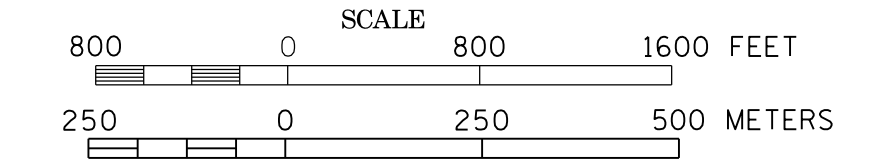
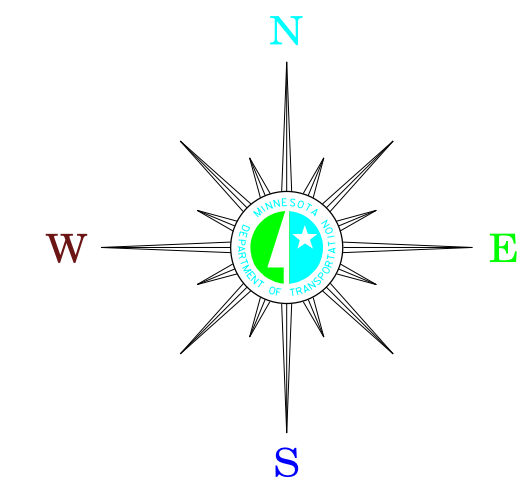


MUNICIPALITIES OF WATONWAN CO.

PREPARED BY THE
MINNESOTA DEPARTMENT OF TRANSPORTATION
OFFICE OF TRANSPORTATION SYSTEM MANAGEMENT
IN COOPERATION WITH
U.S. DEPARTMENT OF TRANSPORTATION
FEDERAL HIGHWAY ADMINISTRATION



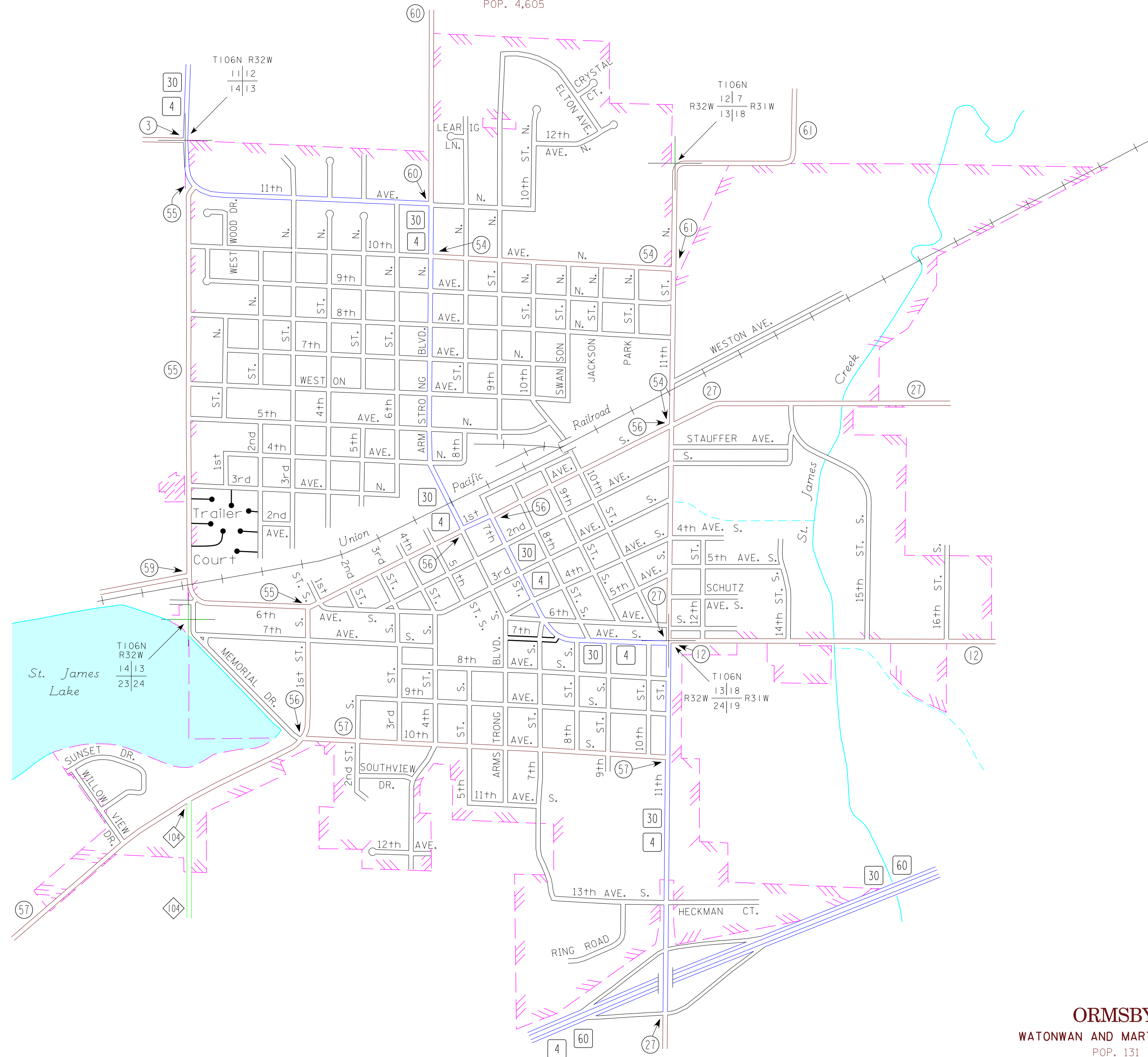
2015
BASIC DATA - 2013



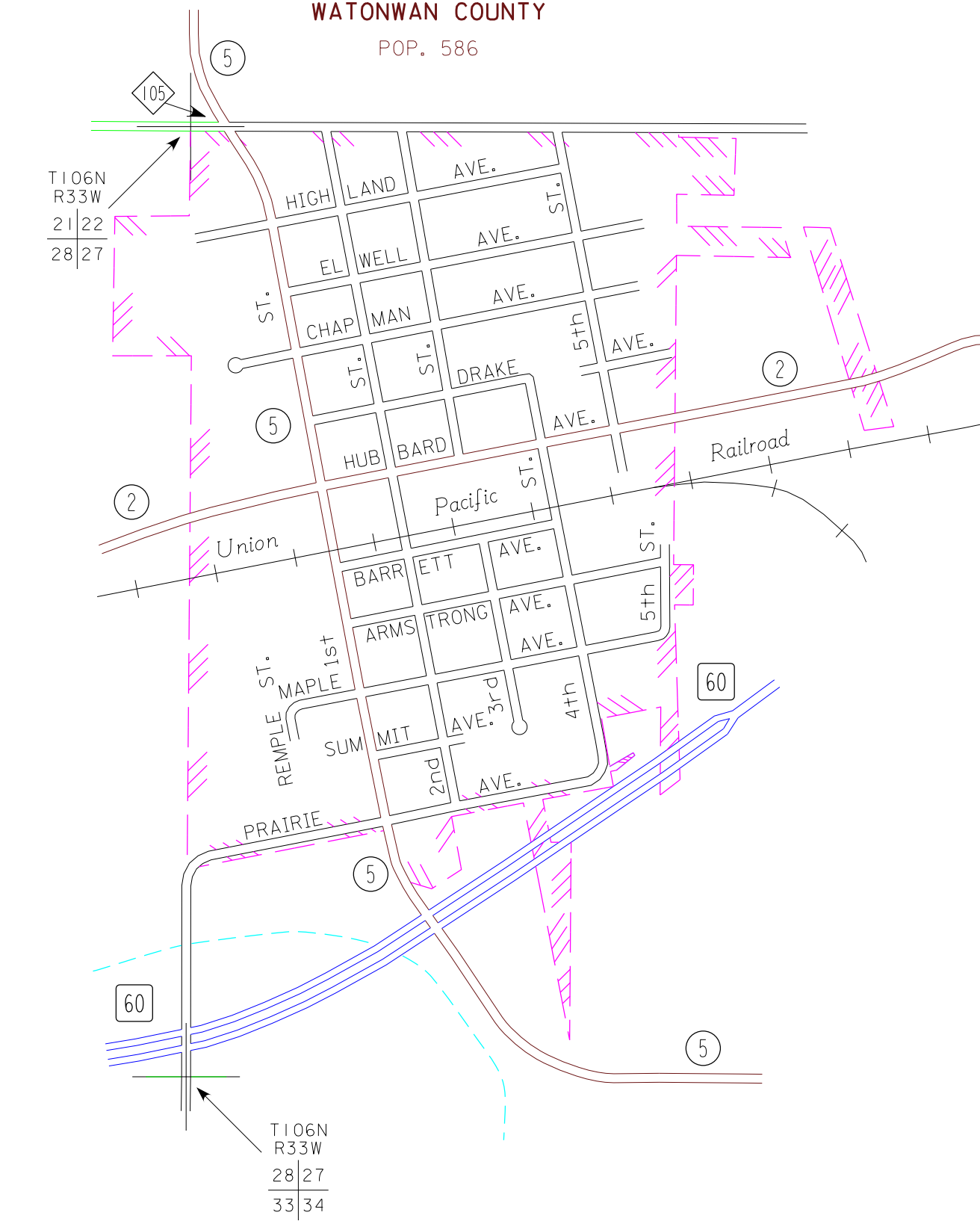
LEGEND

- INTERSTATE TRUNK HIGHWAY..... (I-95)
- U.S. TRUNK HIGHWAY..... (US-10)
- STATE TRUNK HIGHWAY..... (ST-55)
- COUNTY STATE AID HIGHWAY..... (CSA-23)
- COUNTY ROAD..... (CR-19)
- PUBLIC ROAD..... (PR-15)
- PRIVATE ROAD..... (PR-12)
- CORPORATE LIMITS..... (dashed line)

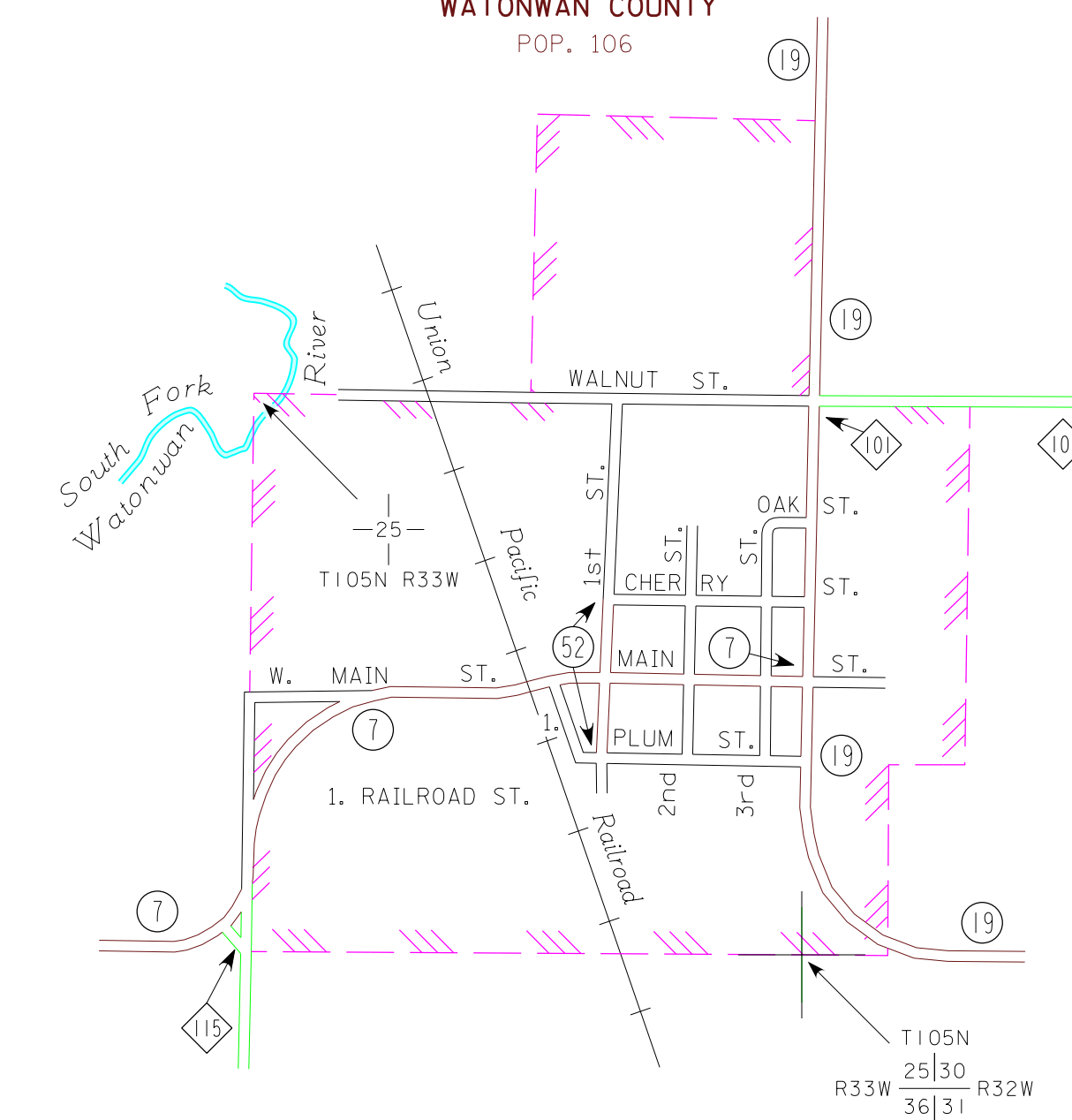
SAINT JAMES WATONWAN COUNTY POP. 4,605



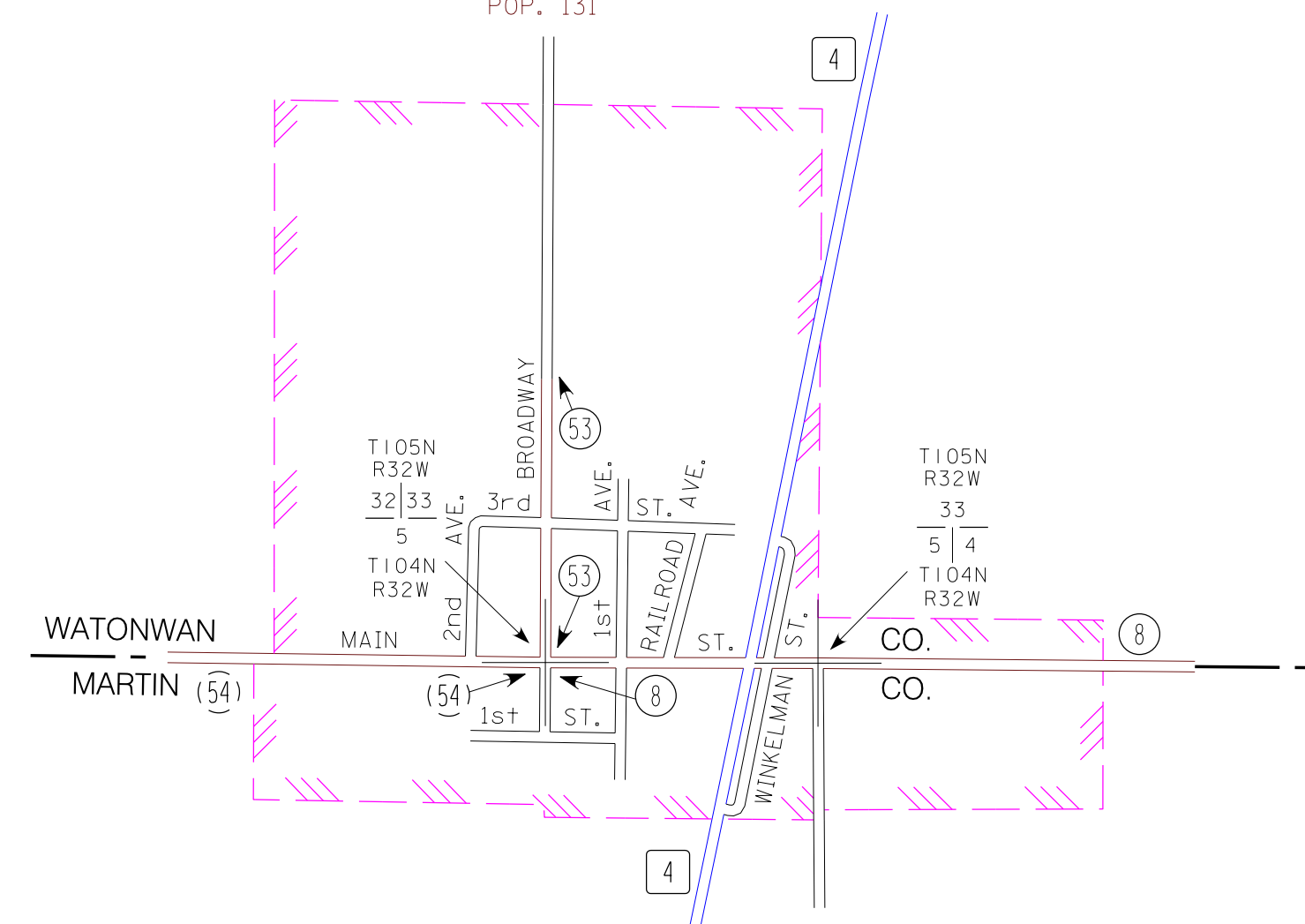
BUTTERFIELD WATONWAN COUNTY POP. 586



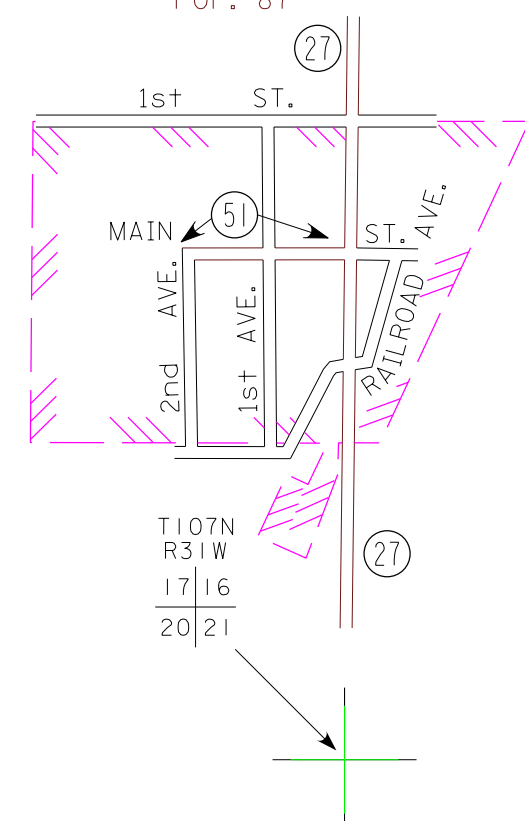
ODIN WATONWAN COUNTY POP. 106



ORMSBY WATONWAN AND MARTIN COUNTIES POP. 131



LA SALLE WATONWAN COUNTY POP. 87



- MUNICIPALITIES SHOWN
ON THIS SHEET
- BUTTERFIELD
 - LA SALLE
 - ODIN
 - ORMSBY
 - ST. JAMES

To request information from this document in an alternative format, call 651-366-4718 or 1-800-657-3774 (Greater Minnesota); 711 or 1-800-627-3529 (Minnesota Relay). You may also send an e-mail to ADArequest.dot@state.mn.us. (Please request at least one week in advance.)

NOTE: 2010 U.S. CENSUS FIGURES SHOWN FOR ALL MUNICIPALITIES UNLESS OTHERWISE STATED.