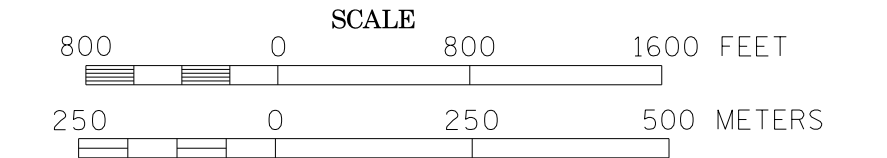
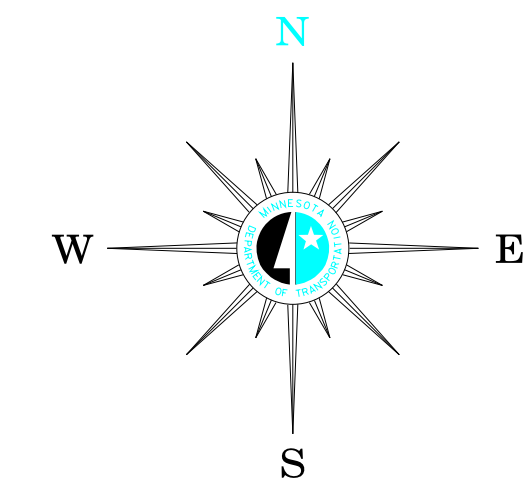


MUNICIPALITIES OF YELLOW MEDICINE CO.

PREPARED BY THE
MINNESOTA DEPARTMENT OF TRANSPORTATION
OFFICE OF TRANSPORTATION DATA & ANALYSIS
IN COOPERATION WITH
U.S. DEPARTMENT OF TRANSPORTATION
FEDERAL HIGHWAY ADMINISTRATION

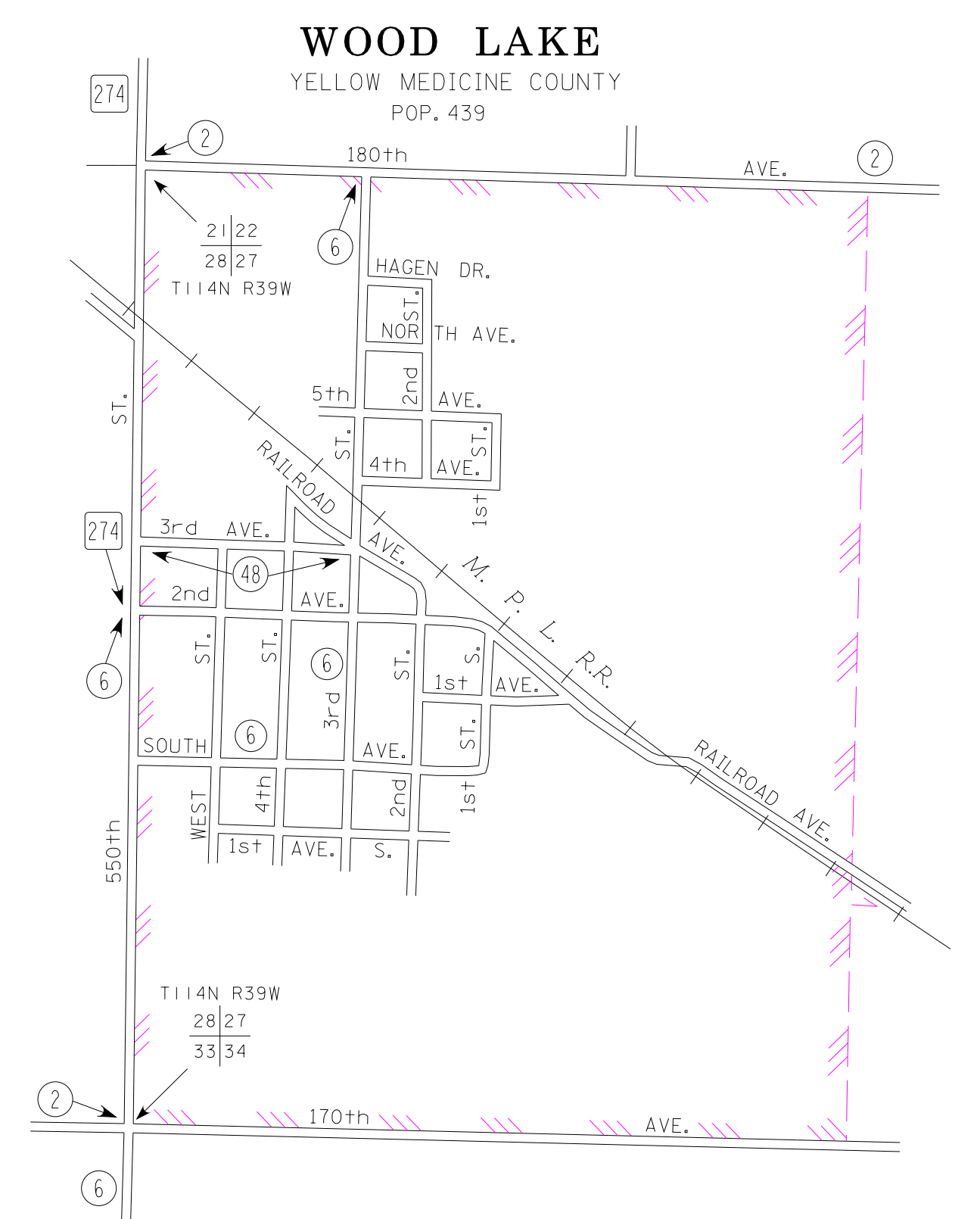
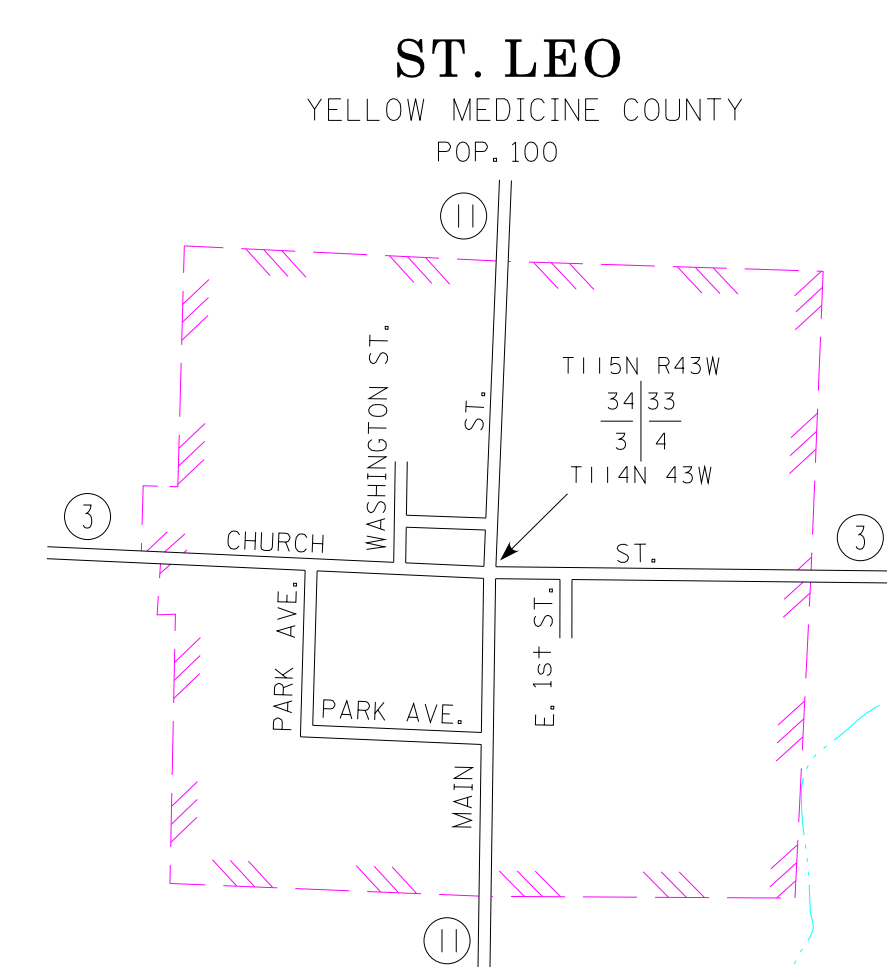
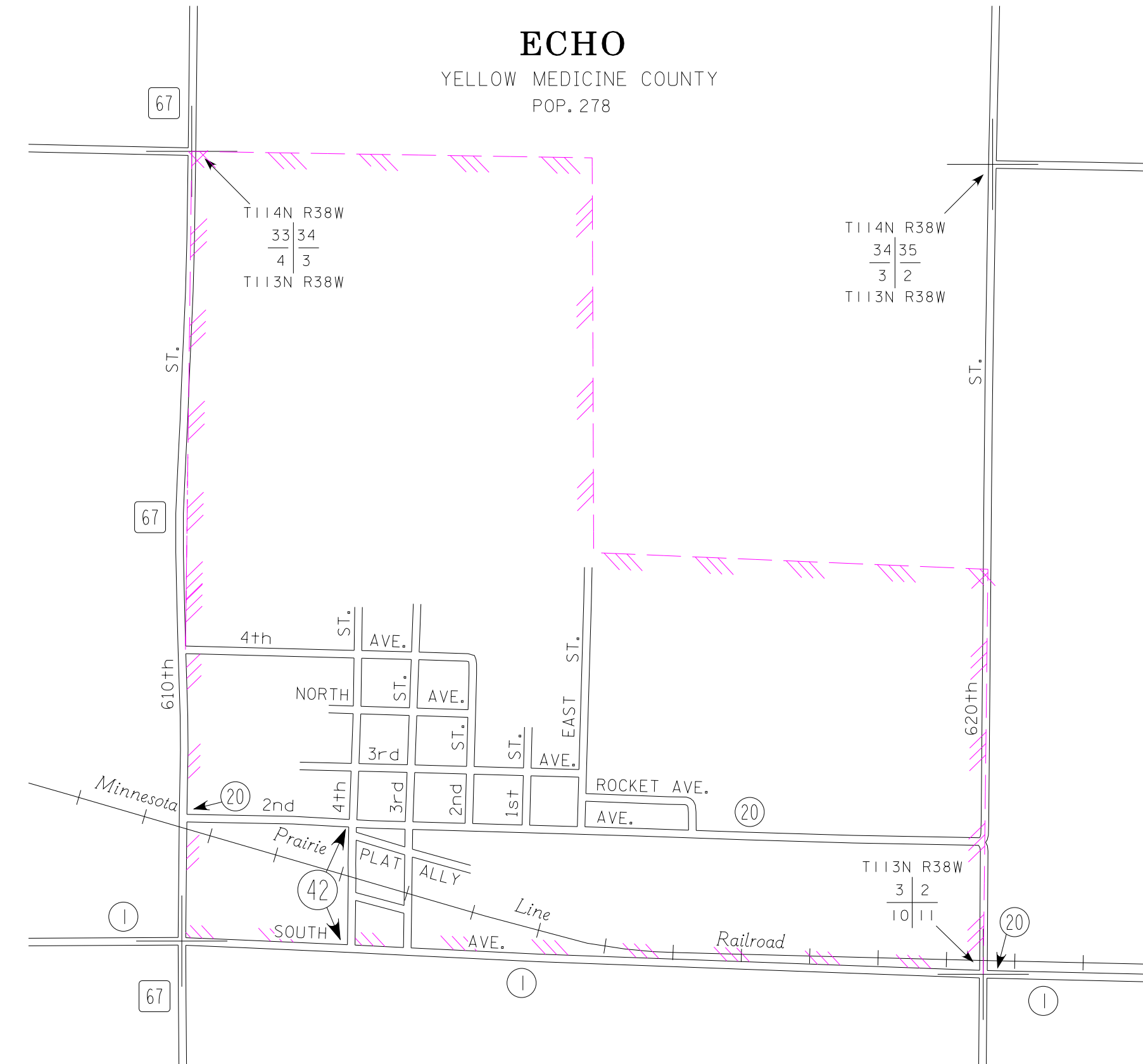
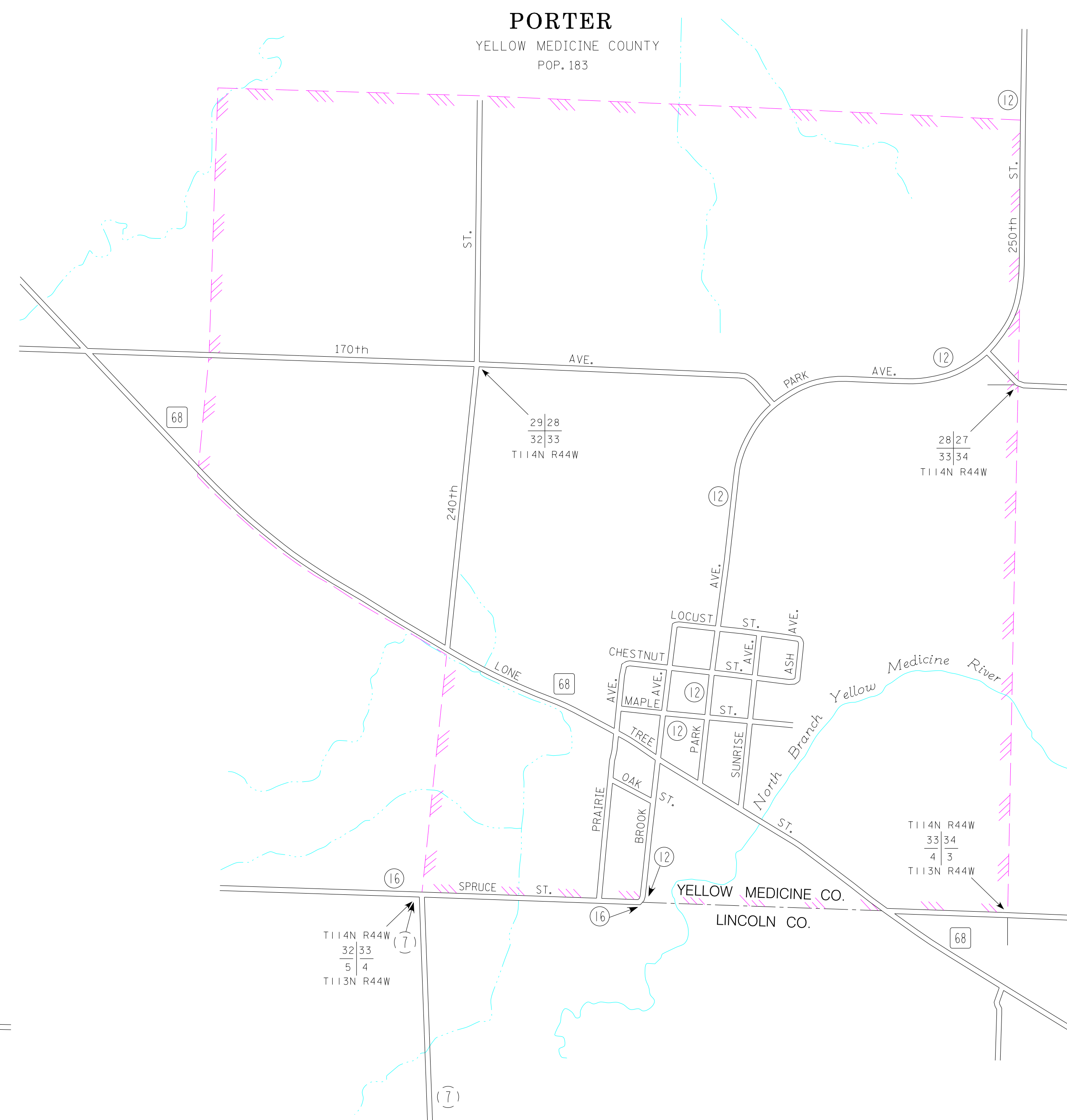
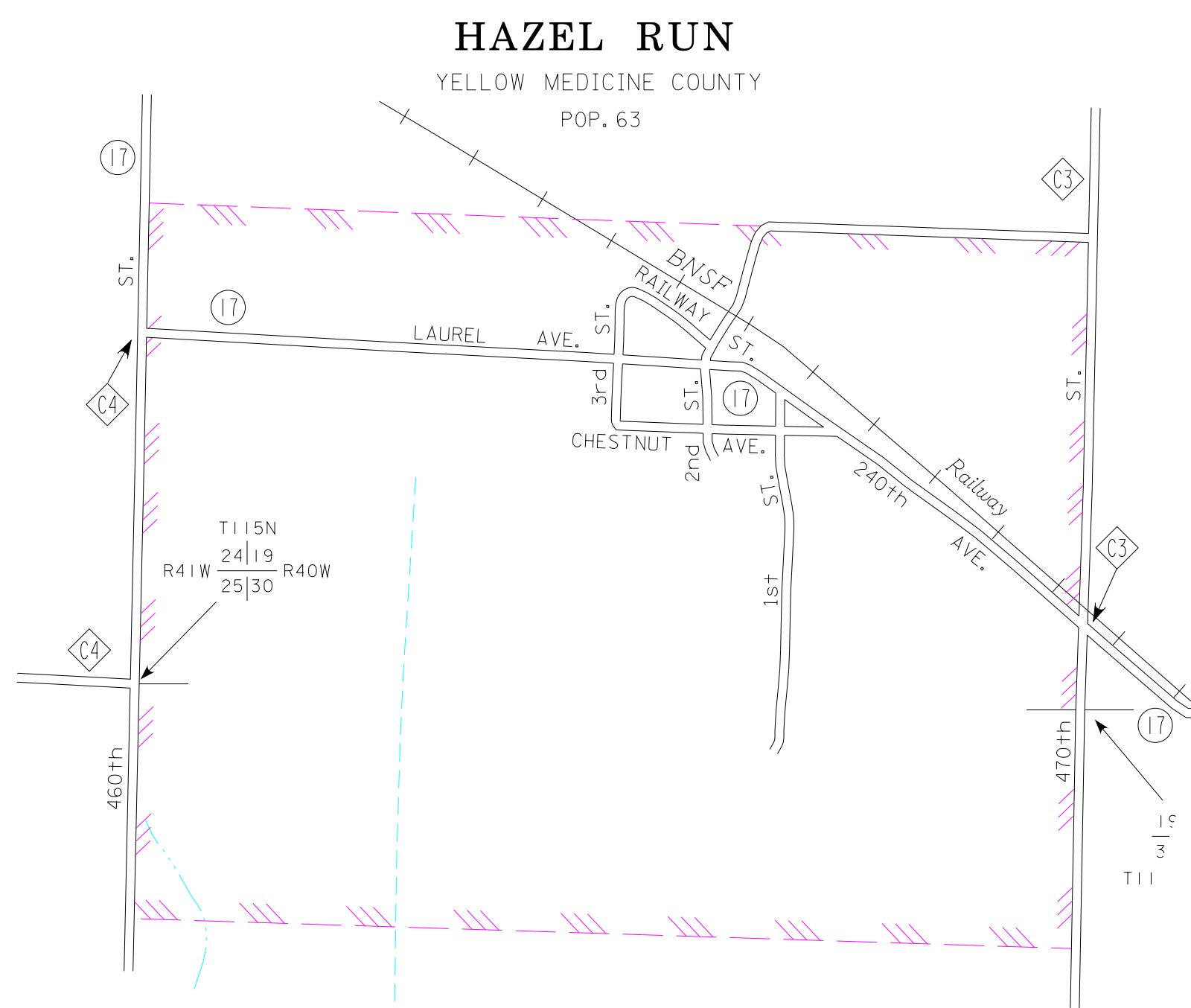


2014
BASIC DATA - 2013



LEGEND

- INTERSTATE TRUNK HIGHWAY..... (I-35)
- U.S. TRUNK HIGHWAY..... (16)
- STATE TRUNK HIGHWAY..... (68)
- COUNTY STATE AID HIGHWAY..... (20)
- COUNTY ROAD..... (C3)
- PUBLIC ROAD..... (C4)
- PRIVATE ROAD..... (C5)
- CORPORATE LIMITS.....



- MUNICIPALITIES SHOWN
ON THIS SHEET
- ECHO
 - HAZEL RUN
 - PORTER
 - ST. LEO
 - WOOD LAKE

To request information from this document in an alternative format, call 651-296-4718 or 1-800-657-3774 (Greater Minnesota); 711 or 1-800-627-3529 (Minnesota Relay). You may also send an e-mail to ADArequest.dot@state.mn.us. (Please request at least one week in advance).

NOTE: 2010 U.S. CENSUS FIGURES SHOWN FOR ALL MUNICIPALITIES UNLESS OTHERWISE STATED.