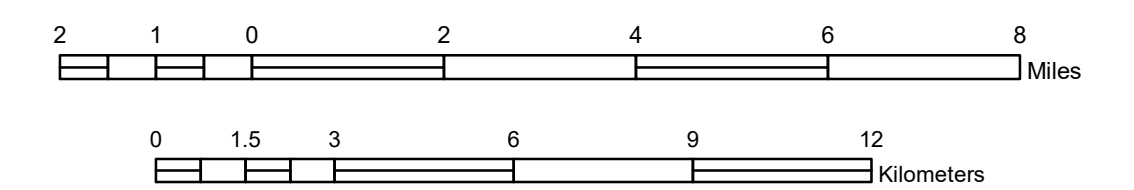


GENERAL HIGHWAY MAP KOOCHICHING COUNTY MINNESOTA

PREPARED BY THE
MINNESOTA DEPARTMENT OF TRANSPORTATION
OFFICE OF TRANSPORTATION SYSTEM MANAGEMENT
IN COOPERATION WITH
U.S. DEPARTMENT OF TRANSPORTATION
FEDERAL HIGHWAY ADMINISTRATION

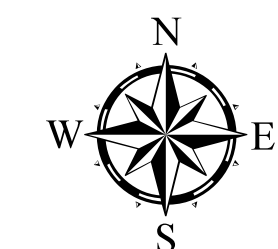
SCALE



1 in = 2 miles

2024

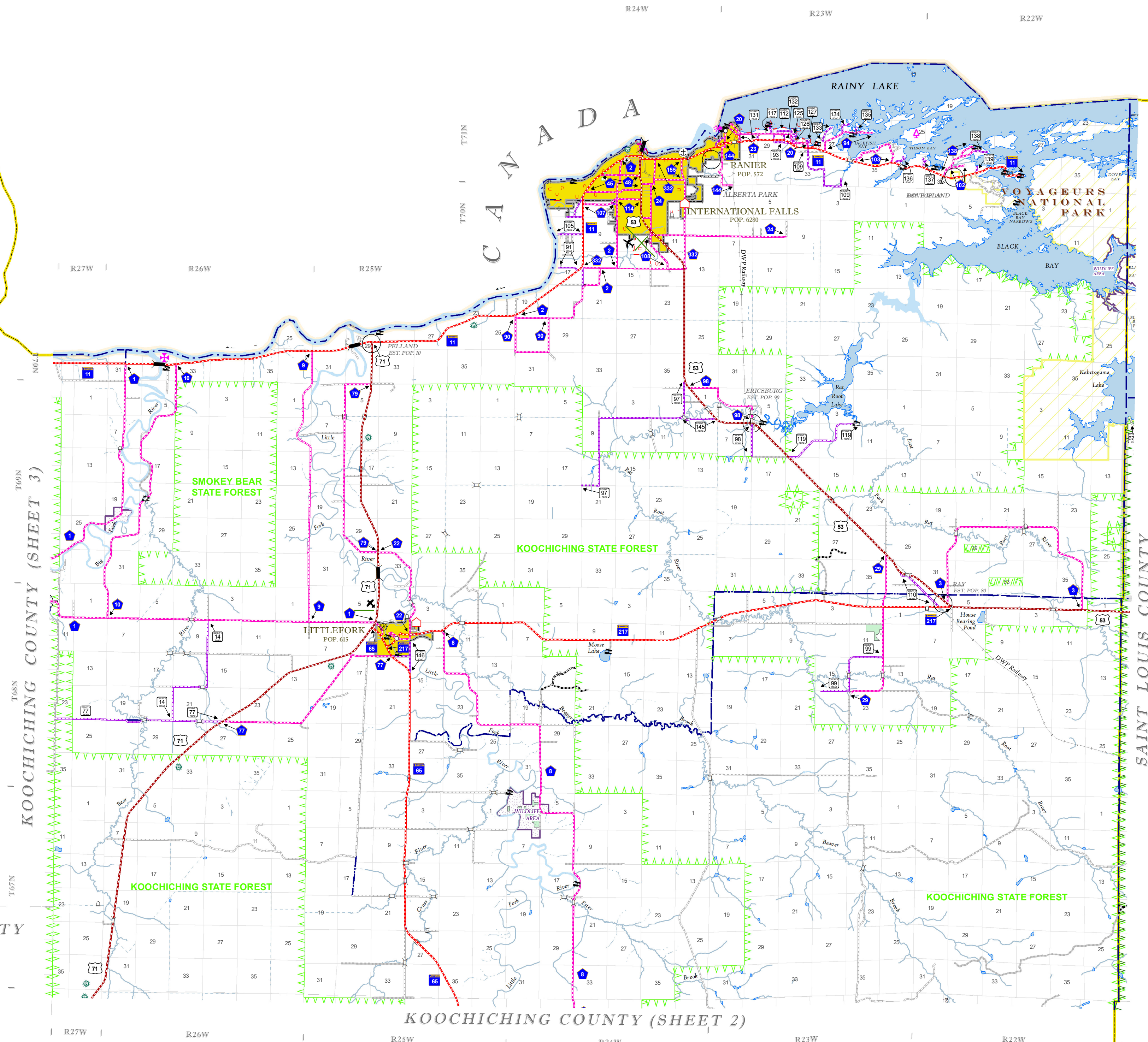
Projection:
Transverse Mercator
NAD 1986
UTM Zone 15



North American Datum
of 1986

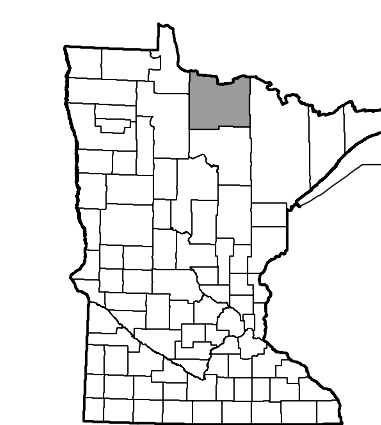
ROAD AND ROADWAY FEATURES	
INTERSTATE	CONCRETE
US HIGHWAY	BITUMINOUS
STATE AID HIGHWAY	GRAVEL
COUNTY ROAD	DIRT/UNIMPROVED
TOWNSHIP ROAD	UNKNOWN
UNORGANIZED TERRITORY ROAD	PROPOSED
PRIVATE ROAD	RAMP OR CONNECTOR
OTHER ROADS:	INTERSTATE EXT.
Municipal	GREAT RIVER ROAD
Military	
National Park	
National Forest	
State Park	
State Forest	
State Game	
RAILROAD AND RAILWAY FEATURES	
EMPIRE BUILDER STATION (AMTRAK)	AVIATION FEATURES
NORTHSTAR STATION (COMMUTER)	GENERAL AIRPORT (Complete Facilities)
	GENERAL AIRPORT (Limited Facilities)
	ARSTRIP (No Facilities)
	SEAPLANE
	AIRPORT RUNWAY
	BOUNDARY FEATURES
	TRIBAL LAND
	STATE OF MINNESOTA
	COUNTY
	MUNICIPALITY
	UNORGANIZED TERRITORY
	FEDERAL ADJUSTED URBAN AREA (2014)
	CIVIL TOWNSHIP
	CONGRESSIONAL TOWNSHIP
	SECTION
	MILITARY
	VOYAGEURS NATIONAL PARK
	BOUNDARY WATERS CANOE AREA WILDERNESS
	STATE PARK
	REGIONAL PARK
	NATIONAL FOREST
	NATIONAL AND STATE FOREST
	STATE FOREST
	NATIONAL TRAIL
	WILDLIFE REFUGE AREA
	WILDLIFE MANAGEMENT AREA
HYDROLOGIC FEATURES	
	LAKE, POND OR RESERVOIR
	RIVER OR STREAM (PERMANENT)
	STREAM (INTERMITTENT)
	DRAINAGE DITCH
	WETLAND
	ISLAND OR LAND
	REGIONAL WATERSHED
CULTURAL FEATURES	
	STATE HISTORICAL MARKER
	HISTORIC DISTRICT
	HISTORIC SITE
	MONUMENT
	CEMETERY

KOOCHICHING COUNTY
(SHEET 1)



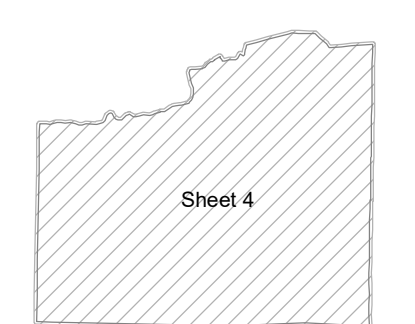
KOOCHICHING COUNTY (SHEET 2)

Outline Map of Minnesota showing location of the County within the state.



Outline Map of the County.

Area of this County 3,153.39 Sq. Miles
Land Area 3,104.07 Sq. Miles
2020 Total County Population 12062



To request information from this document in an alternative format, call 651-366-4718 or 1-800-657-3774 (Greater Minnesota); 711 or 1-800-627-3529 (Minnesota Relay). You may also send an e-mail to ADRequest.dot@state.mn.us. (Please request at least one week in advance.)

NOTE: FOR DETAIL OF COUNTY STATE AID HIGHWAYS AND COUNTY ROADS IN INCORPORATED PLACE, SEE MAPS OF MUNICIPALITIES.

LAST EDITED ON 11-18-2024

SHEET 4 OF 4