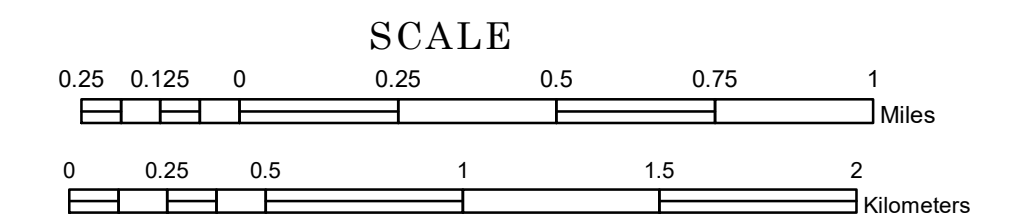


TOWNSHIP OF SILVER BROOK

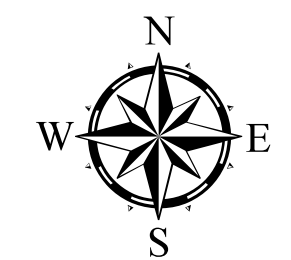
PREPARED BY THE
MINNESOTA DEPARTMENT OF TRANSPORTATION
OFFICE OF TRANSPORTATION SYSTEM MANAGEMENT

IN COOPERATION WITH
U.S. DEPARTMENT OF TRANSPORTATION
FEDERAL HIGHWAY ADMINISTRATION



1 in = 1,600 ft

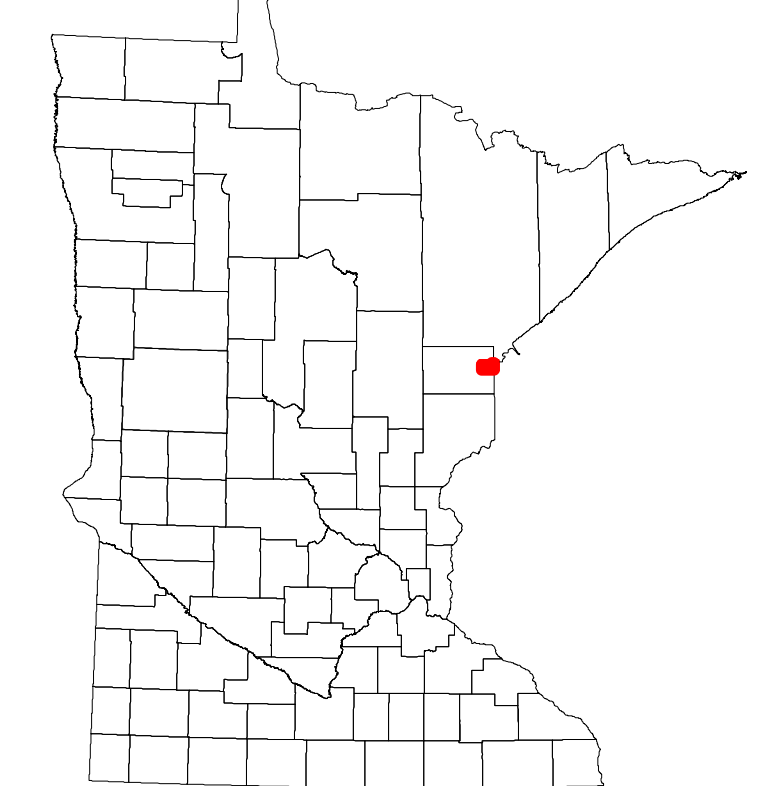
2024



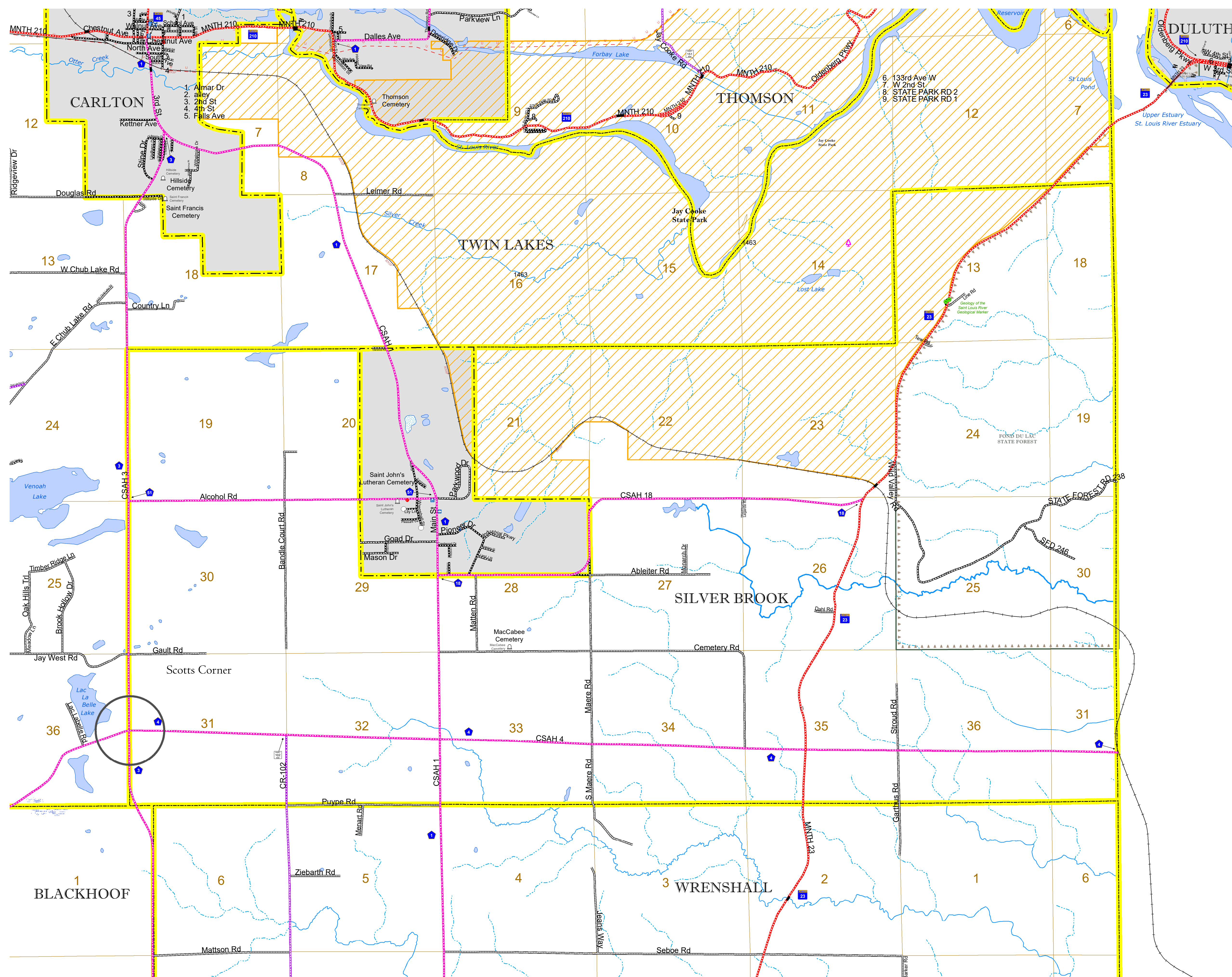
Projection:
Transverse Mercator
NAD 1986
UTM Zone 15

North American Datum
of 1986

ROAD AND ROADWAY FEATURES		BOUNDARY FEATURES	
INTERSTATE	CONCRETE	TRIBAL LAND	STATE OF MINNESOTA
US HIGHWAY	BITUMINOUS	COUNTY	MUNICIPALITY
MN HIGHWAY	GRAVEL	UNINCORPORATED COMMUNITY	SECTION
COUNTY STATE AID HIGHWAY	DIRT/UNIMPROVED	MILITARY	VOYAGEURS NATIONAL PARK
COUNTY ROAD	OTHER	UNINCORPORATED COMMUNITY	BOUNDARY WATERS GANOE AREA WILDERNESS
TOWNSHIP ROAD	UNKNOWN	STATE CAPITAL	STATE PARK
UNORGANIZED TERRITORY ROAD		COUNTY SEAT	NATIONAL FOREST
OTHER ROADS		CITY CENTER	NATIONAL AND STATE FOREST
Municipal	RAMP OR CONNECTOR	CITY CENTER	STATE FOREST
Private	INTERSTATE EXIT	CITY CENTER	NATIONAL TRAIL
National Monument	AVIATION FEATURES	CITY CENTER	WILDLIFE REFUGUE AREA
National Wildlife Refuge	GENERAL AIRPORT	CITY CENTER	WILDLIFE MANAGEMENT AREA
State Game Preserve	AIRSTRIP	CITY CENTER	HYDROLOGIC FEATURES
State Park	SEAPLANE	CITY CENTER	RIVER OR STREAM (PERMANENT)
Present	AIRPORT RUNWAY	CITY CENTER	LAKE, POND OR RESERVOIR
		CITY CENTER	STREAM (INTERMITTENT)
		CITY CENTER	DRAINAGE DITCH
		CITY CENTER	WETLAND
		CITY CENTER	ISLAND OR LAND
		CITY CENTER	REGIONAL WATERSHED



Population (U.S. Census 2010): 648



To request information from this document in an alternative format, call 651-366-4718 or 1-800-657-3774 (Greater Minnesota); 711 or 1-800-627-3529 (Minnesota Relay). You may also send an e-mail to ADArequest.dot@state.mn.us. (Please request at least one week in advance.)