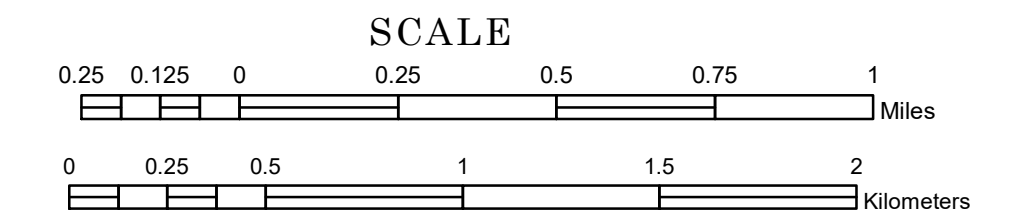


# TOWNSHIP OF DAGGETT BROOK

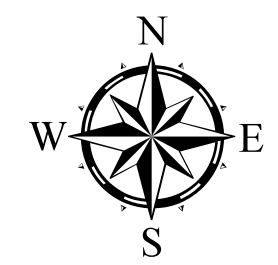
PREPARED BY THE  
MINNESOTA DEPARTMENT OF TRANSPORTATION  
OFFICE OF TRANSPORTATION SYSTEM MANAGEMENT

IN COOPERATION WITH  
U.S. DEPARTMENT OF TRANSPORTATION  
FEDERAL HIGHWAY ADMINISTRATION



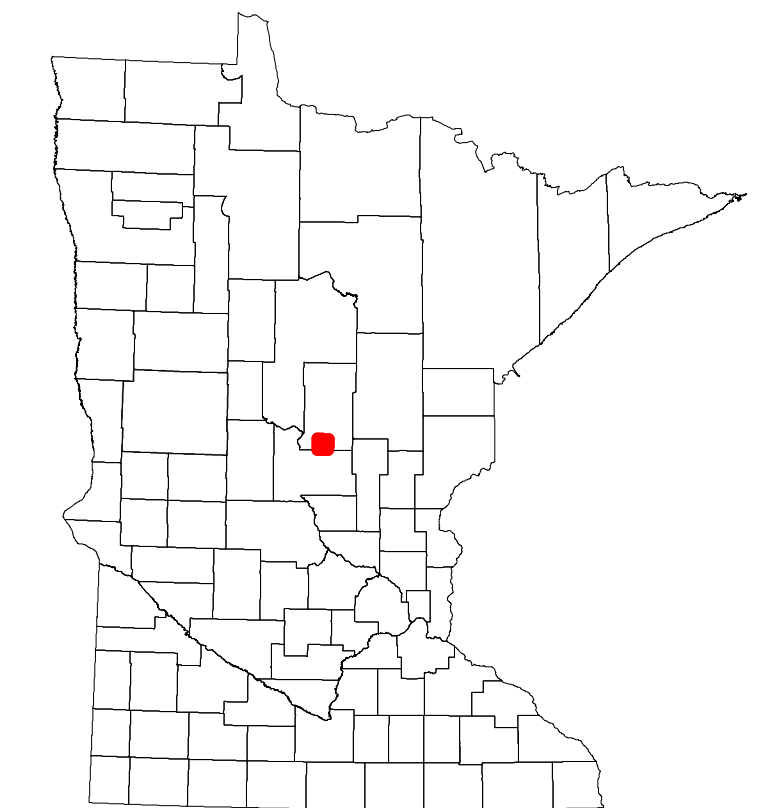
2024

Projection:  
Transverse Mercator  
NAD 1986  
UTM Zone 15

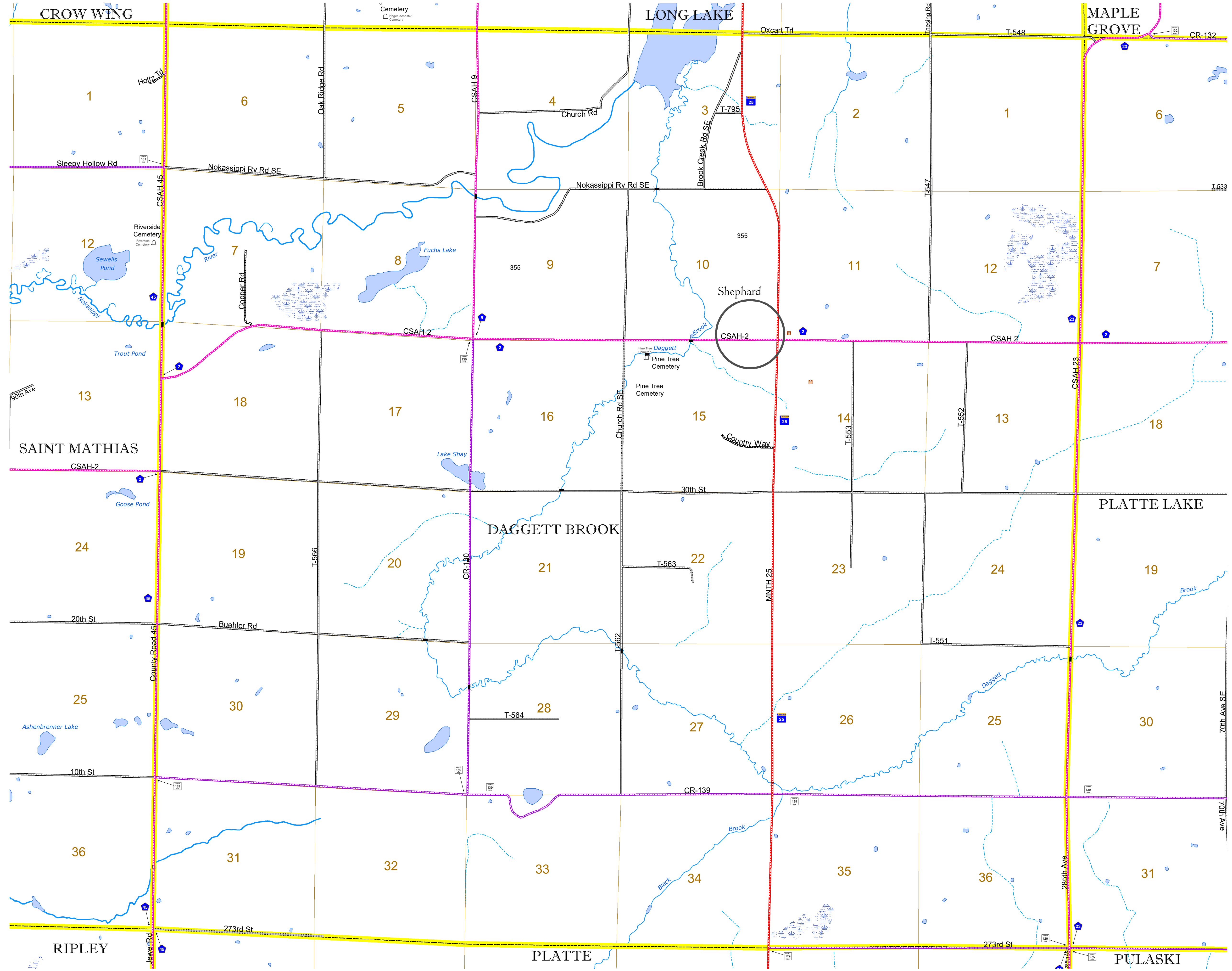


North American Datum  
of 1986

| ROAD AND ROADWAY FEATURES                      |                          | AVIATION FEATURES       |                                       |
|--|--------------------------|-------------------------|---------------------------------------|
| INTERSTATE                                     | CONCRETE                 | COMMERCIAL AIRPORT      | GENERAL AIRPORT                       |
| US HIGHWAY                                     | BITUMINOUS               | AIRSTRIP                | SEAPLANE                              |
| MN HIGHWAY                                     | GRAVEL                   | AIRPORT RUNWAY          | AIRPORT RUNWAY                        |
| COUNTY STATE AID HIGHWAY                       | DIRT/UNIMPROVED          |                         |                                       |
| COUNTY ROAD                                    | OTHER                    |                         |                                       |
| TOWNSHIP ROAD                                  | UNKNOWN                  |                         |                                       |
| UNORGANIZED TERRITORY ROAD                     |                          |                         |                                       |
| OTHER ROADS                                    |                          |                         |                                       |
| Municipal                                      | RAMP OR CONNECTOR        |                         |                                       |
| Nature Service                                 | INTERSTATE EXIT          |                         |                                       |
| Museum   | GREAT RIVER ROAD         |                         |                                       |
|  |                          |                         |                                       |
| RAILROAD AND RAILWAY FEATURES                  |                          | BOUNDARY FEATURES       |                                       |
| EMPIRE BUILDER STATION (AMTRAK)                | TRIBAL LAND              | STATE OF MINNESOTA      | COUNTY                                |
| NORTHSTAR STATION (COMMUTER)                   | STATE OF MINNESOTA       | MUNICIPALITY            | MUNICIPALITY                          |
| LIGHT RAIL                                     | UNINCORPORATED COMMUNITY | UNINCORPORATED TOWNSHIP | CIVIL TOWNSHIP                        |
| BLUE LINE                                      |                          | CONGRESSIONAL TOWNSHIP  | SECTION                               |
| GREEN LINE                                     |                          | MILITARY                | VOYAGEURS NATIONAL PARK               |
|  |                          |                         | BOUNDARY WATERS CANOE AREA WILDERNESS |
|  |                          |                         | STATE PARK                            |
|  |                          |                         | REGIONAL PARK                         |
|  |                          |                         | NATIONAL FOREST                       |
|  |                          |                         | NATIONAL AND STATE FOREST             |
|  |                          |                         | STATE FOREST                          |
|  |                          |                         | NATIONAL TRAIL                        |
|  |                          |                         | WILDLIFE REFUGUE AREA                 |
|  |                          |                         | WILDLIFE MANAGEMENT AREA              |
|  |                          |                         | HYDROLOGIC FEATURES                   |
|  |                          |                         | RIVER OR STREAM (PERENNIAL)           |
|  |                          |                         | LAKE, POND OR RESERVOIR               |
|  |                          |                         | STREAM (INTERMITTENT)                 |
|  |                          |                         | DRAINAGE DITCH                        |
|  |                          |                         | WETLAND                               |
|  |                          |                         | ISLAND OR LAND                        |
|  |                          |                         | REGIONAL WATERSHED                    |
|  |                          |                         |                                       |
| INFRASTRUCTURE FEATURES                        |                          |                         |                                       |
| LONG BRIDGE (200' or Greater Span)             |                          |                         |                                       |
| MAJOR BRIDGE (20' to 200' Span)                |                          |                         |                                       |
| MINOR BRIDGE (5' to 20' Span)                  |                          |                         |                                       |
| DAM  |                          |                         |                                       |
| LOCK AND DAM                                   |                          |                         |                                       |
| CITY CENTERS                                   |                          |                         |                                       |
| STATE CAPITAL                                  |                          |                         |                                       |
| COUNTY SEAT                                    |                          |                         |                                       |
| CITY CENTER                                    |                          |                         |                                       |
| UNINCORPORATED COMMUNITY                       |                          |                         |                                       |
| PUBLIC SERVICE FEATURES                        |                          |                         |                                       |
| MNDOT OFFICE                                   |                          |                         |                                       |
| MNDOT TRUCK STATION                            |                          |                         |                                       |
| HIGHWAY PATROL DISTRICT OFFICE                 |                          |                         |                                       |
| STATE TRAVEL INFORMATION CENTER                |                          |                         |                                       |
| REST AREA (Full Service)                       |                          |                         |                                       |
| REST AREA (Vault Toilet)                       |                          |                         |                                       |
| WAYSIDE (Vault or Pit Toilet)                  |                          |                         |                                       |
| PARK AND RIDE LOT                              |                          |                         |                                       |
| PORT OF ENTRY                                  |                          |                         |                                       |
| PUBLIC ACCESS POINT                            |                          |                         |                                       |
| MN STATE COLLEGE AND UNIVERSITY SYSTEM (MNSCU) |                          |                         |                                       |
| UNIVERSITY OF MN SYSTEM                        |                          |                         |                                       |
| FAIRGROUNDS                                    |                          |                         |                                       |
| CULTURAL FEATURES                              |                          |                         |                                       |
| STATE HISTORICAL MARKER                        |                          |                         |                                       |
| HISTORIC DISTRICT                              |                          |                         |                                       |
| HISTORIC SITE                                  |                          |                         |                                       |
| MONUMENT                                       |                          |                         |                                       |



Population (U.S. Census 2010): 554



To request information from this document in an alternative format, call 651-366-4718 or 1-800-657-3774 (Greater Minnesota); 711 or 1-800-627-3529 (Minnesota Relay). You may also send an e-mail to ADArequest.dot@state.mn.us. (Please request at least one week in advance.)