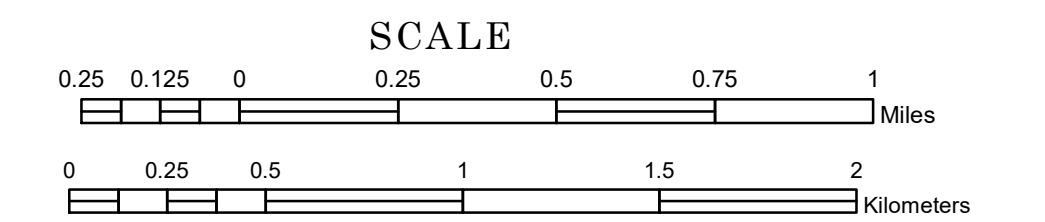


TOWNSHIP OF JEFFERSON

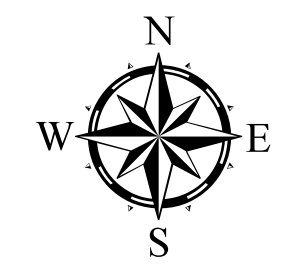
PREPARED BY THE
MINNESOTA DEPARTMENT OF TRANSPORTATION
OFFICE OF TRANSPORTATION SYSTEM MANAGEMENT

IN COOPERATION WITH
U.S. DEPARTMENT OF TRANSPORTATION
FEDERAL HIGHWAY ADMINISTRATION

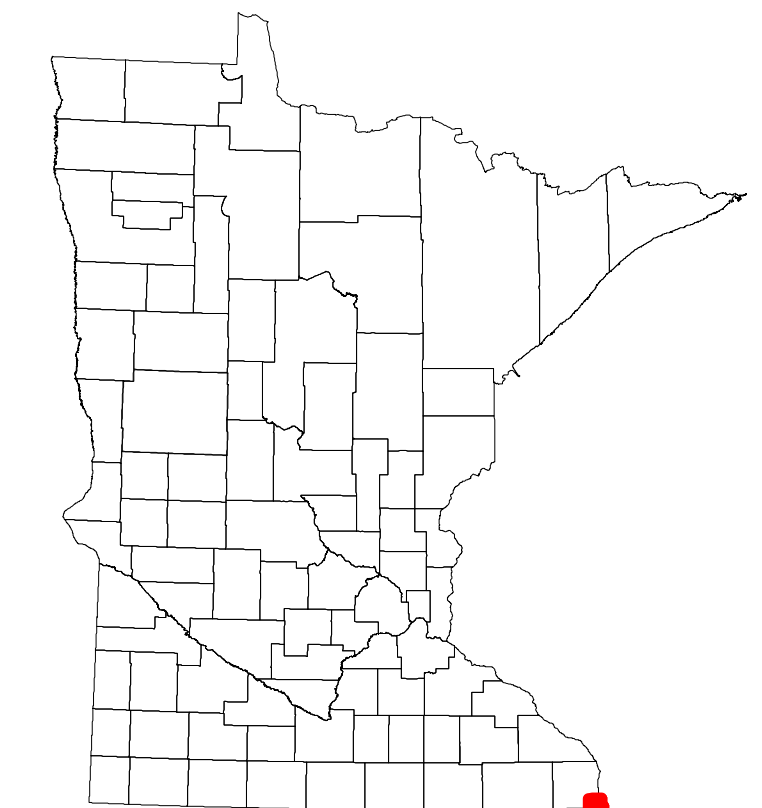


1 in = 1,600 ft
2024

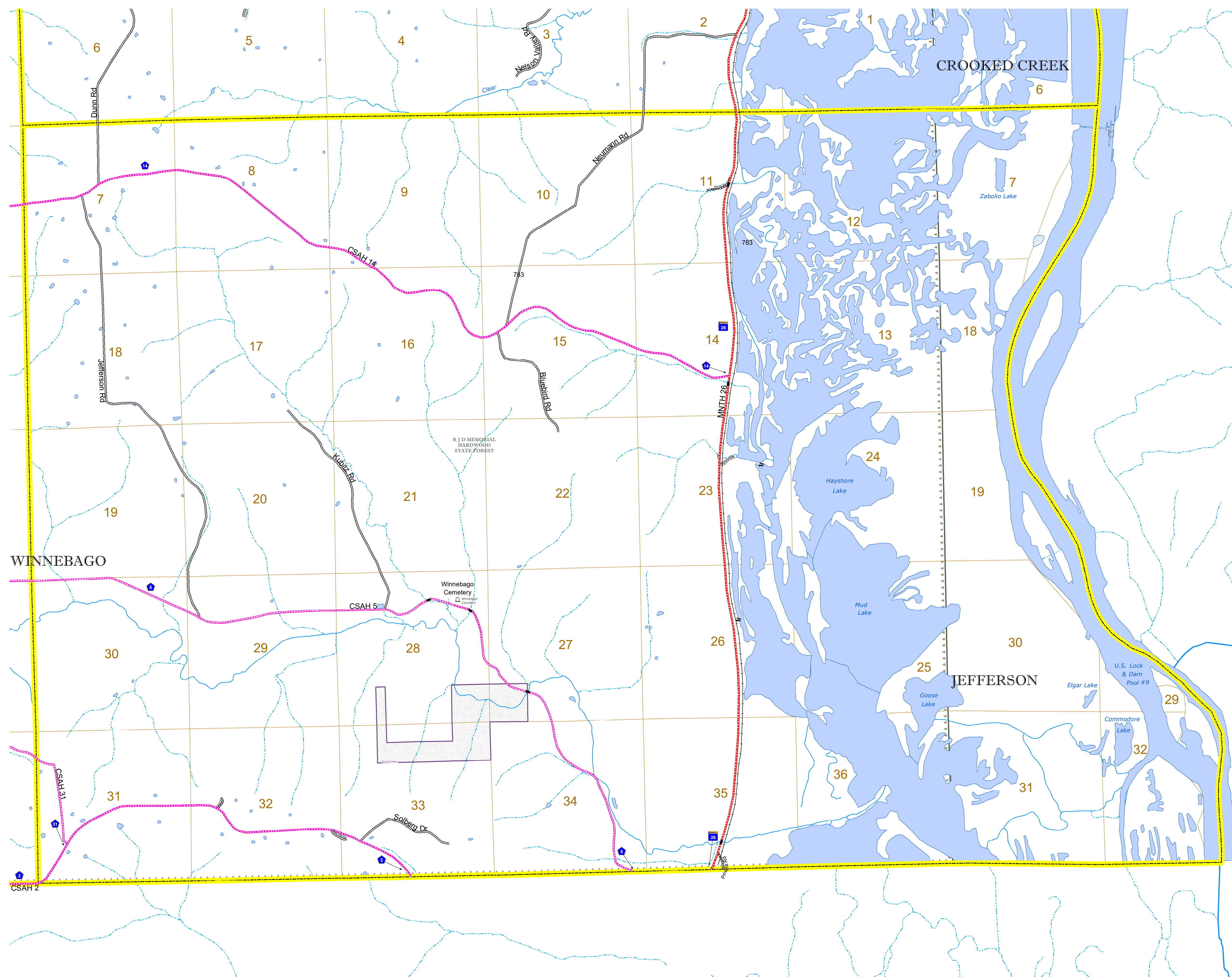
Projection:
Transverse Mercator
NAD 1986
UTM Zone 15



ROAD AND ROADWAY FEATURES		AVIATION FEATURES	
INTERSTATE	CONCRETE	COMMERCIAL AIRPORT	GENERAL AIRPORT
US HIGHWAY	BITUMINOUS	AIRSTRIP	AIRSTRIP
MN HIGHWAY	GRAVEL	SEAPLANE	SEAPLANE
COUNTY STATE AID HIGHWAY	DIRT/UNIMPROVED	AIRPORT RUNWAY	AIRPORT RUNWAY
COUNTY ROAD	OTHER		
TOWNSHIP ROAD	UNKNOWN		
UNORGANIZED TERRITORY ROAD			
OTHER ROADS			
Municipal	RAMP OR CONNECTOR		
Private	INTERSTATE EXIT		
National Monument	GREAT RIVER ROAD		
National Park			
National Wildlife			
State Game			
State Park			
Present			
RAILROAD AND RAILWAY FEATURES		BOUNDARY FEATURES	
EMPIRE BUILDER STATION (AMTRAK)	TRIBAL LAND	STATE OF MINNESOTA	COUNTY
NORTHSTAR STATION (COMMITTEE)	STATE OF MINNESOTA	COUNTY	MUNICIPALITY
LIGHT RAIL	UNINCORPORATED TERRITORY	UNINCORPORATED TERRITORY	FEDERAL ADJUSTED URBAN AREA (2014)
BLUE LINE	FEDERAL ADJUSTED URBAN AREA (2014)	CIVIL TOWNSHIP	CONGRESSIONAL TOWNSHIP
GREEN LINE	CIVIL TOWNSHIP	CONGRESSIONAL TOWNSHIP	SECTION
INFRASTRUCTURE FEATURES		PUBLIC SERVICE FEATURES	
LONG BRIDGE (200' OR GREATER SPAN)	MNDOT OFFICE	MNDOT OFFICE	BOUNDARY WATERS NATIONAL PARK
MAJOR BRIDGE (20' TO 200' SPAN)	MNDOT TRUCK STATION	HIGHWAY PATROL DISTRICT OFFICE	STATE PARK
MINOR BRIDGE (5' TO 20' SPAN)	STATE TRAVEL INFORMATION CENTER	REST AREA (Full Service)	REGIONAL PARK
DAM	REST AREA (Vault Toilet)	WAYSIDE (Vault or Pit Toilet)	NATIONAL FOREST
LOCK AND DAM	PARK AND RIDE LOT	PORT OF ENTRY	NATIONAL AND STATE FOREST
	PUBLIC ACCESS POINT	MN STATE COLLEGE AND UNIVERSITY SYSTEM (MNSCU)	STATE FOREST
	MN STATE COLLEGE AND UNIVERSITY SYSTEM (MNSCU)	UNIVERSITY OF MN SYSTEM	NATIONAL TRAIL
	FAIRGROUNDS		WILDLIFE REFUGE AREA
			WILDLIFE MANAGEMENT AREA
			HYDROLOGIC FEATURES
			RIVER OR STREAM (PERENNIAL)
			LAKE, POND OR RESERVOIR
			STREAM (INTERMITTENT)
			DRAINAGE DITCH
			WETLAND
			ISLAND OR LAND
			REGIONAL WATERSHED



Population (U.S. Census 2010): 129



To request information from this document in an alternative format, call 651-366-4718 or 1-800-657-3774 (Greater Minnesota); 711 or 1-800-627-3529 (Minnesota Relay). You may also send an e-mail to ADARquest.dot@state.mn.us. (Please request at least one week in advance.)