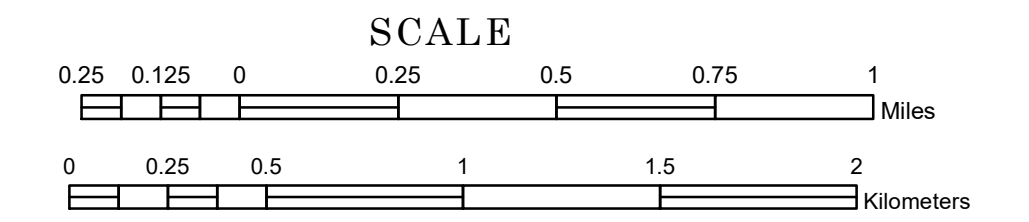


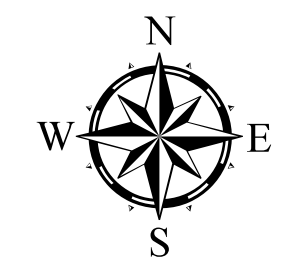
TOWNSHIP OF WYANETT

PREPARED BY THE
MINNESOTA DEPARTMENT OF TRANSPORTATION
OFFICE OF TRANSPORTATION SYSTEM MANAGEMENT

IN COOPERATION WITH
U.S. DEPARTMENT OF TRANSPORTATION
FEDERAL HIGHWAY ADMINISTRATION



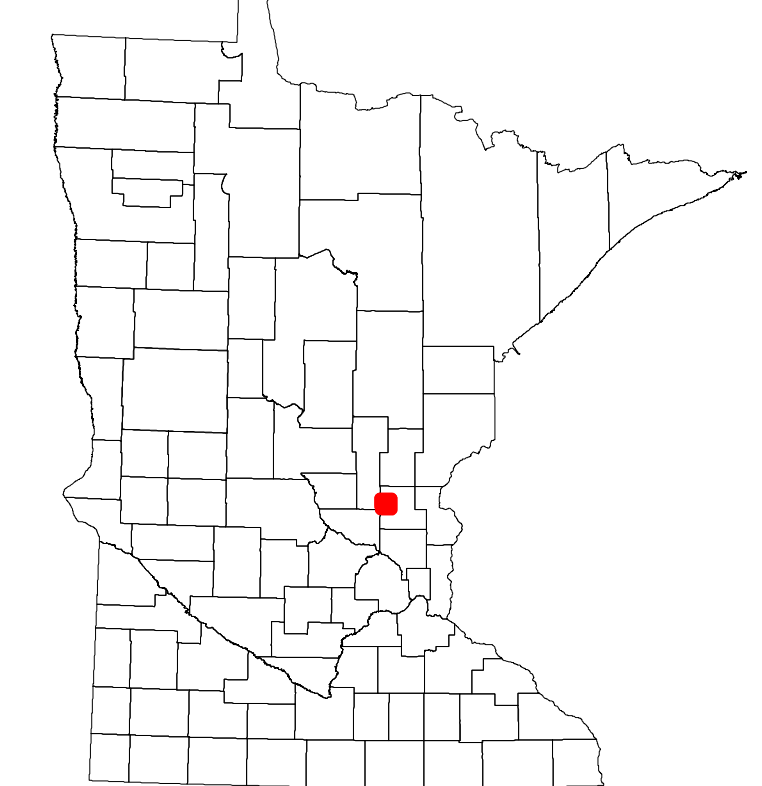
1 in = 1,600 ft
2024



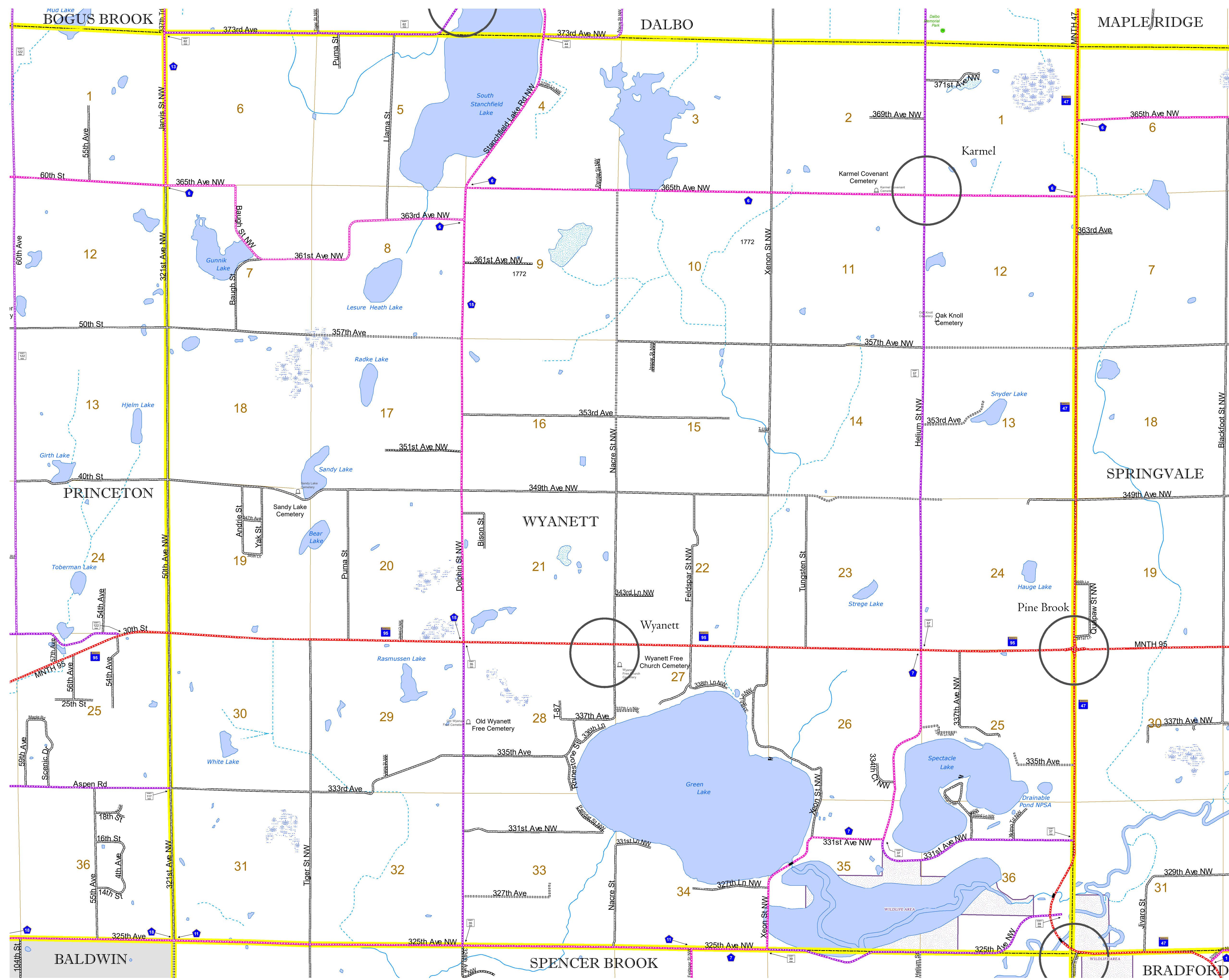
Projection:
Transverse Mercator
NAD 1986
UTM Zone 15

North American Datum
of 1986

ROAD AND ROADWAY FEATURES		AVIATION FEATURES	
INTERSTATE	[Symbol]	CONCRETE	[Symbol]
US HIGHWAY	[Symbol]	BITUMINOUS	[Symbol]
MN HIGHWAY	[Symbol]	GRAVEL	[Symbol]
COUNTY STATE AID HIGHWAY	[Symbol]	DIRT/UNIMPROVED	[Symbol]
COUNTY ROAD	[Symbol]	OTHER	[Symbol]
TOWNSHIP ROAD	[Symbol]	UNKNOWN	[Symbol]
UNORGANIZED TERRITORY ROAD	[Symbol]		
OTHER ROADS		RAMP OR CONNECTOR	[Symbol]
Municipal	[Symbol]	INTERSTATE EXIT	[Symbol]
Private	[Symbol]	GREAT RIVER ROAD	[Symbol]
National Monument	[Symbol]		
National Park	[Symbol]		
National Wildlife Refuge	[Symbol]		
State Park	[Symbol]		
Preserve	[Symbol]		
RAILROAD AND RAILWAY FEATURES		BOUNDARY FEATURES	
EMPIRE BUILDER STATION (AMTRAK)	[Symbol]	TRIBAL LAND	[Symbol]
NORTHSTAR STATION (COMPUTER)	[Symbol]	STATE OF MINNESOTA	[Symbol]
		COUNTY	[Symbol]
		MUNICIPALITY	[Symbol]
		UNORGANIZED TERRITORY	[Symbol]
		FEDERAL ADJUSTED URBAN AREA (2014)	[Symbol]
		CIVIL TOWNSHIP	[Symbol]
		CONGRESSIONAL TOWNSHIP	[Symbol]
		SECTION	[Symbol]
		MILITARY	[Symbol]
		VOYAGEURS NATIONAL PARK	[Symbol]
		BOUNDARY WATERS CANOE AREA WILDERNESS	[Symbol]
		STATE PARK	[Symbol]
		REGIONAL PARK	[Symbol]
		NATIONAL FOREST	[Symbol]
		NATIONAL AND STATE FOREST	[Symbol]
		STATE FOREST	[Symbol]
		NATIONAL TRAIL	[Symbol]
		WILDLIFE REFUGUE AREA	[Symbol]
		WILDLIFE MANAGEMENT AREA	[Symbol]
		HYDROLOGIC FEATURES	
		RIVER OR STREAM (PERMANENT)	[Symbol]
		LAKE, POND OR RESERVOIR	[Symbol]
		STREAM (INTERMITTENT)	[Symbol]
		DRAINAGE DITCH	[Symbol]
		WETLAND	[Symbol]
		ISLAND OR LAND	[Symbol]
		REGIONAL WATERSHED	[Symbol]
CITY CENTERS			
STATE CAPITAL	[Symbol]		
COUNTY SEAT	[Symbol]		
CITY CENTER	[Symbol]		
UNINCORPORATED COMMUNITY	[Symbol]		
PUBLIC SERVICE FEATURES			
MNDOT OFFICE	[Symbol]		
MNDOT TRUCK STATION	[Symbol]		
HIGHWAY PATROL DISTRICT OFFICE	[Symbol]		
STATE TRAVEL INFORMATION CENTER	[Symbol]		
REST AREA (Full Service)	[Symbol]		
REST AREA (Vault Toilet)	[Symbol]		
WAYSIDE (Vault or Pit Toilet)	[Symbol]		
PARK AND RIDE LOT	[Symbol]		
PORT OF ENTRY	[Symbol]		
PUBLIC ACCESS POINT	[Symbol]		
MN STATE COLLEGE AND UNIVERSITY SYSTEM (MNSCU)	[Symbol]		
UNIVERSITY OF MN SYSTEM	[Symbol]		
FAIRGROUNDS	[Symbol]		
CULTURAL FEATURES			
STATE HISTORICAL MARKER	[Symbol]		
HISTORIC DISTRICT	[Symbol]		
HISTORIC SITE	[Symbol]		
MONUMENT	[Symbol]		



Population (U.S. Census 2010): 1729



To request information from this document in an alternative format, call 651-366-4718 or 1-800-657-3774 (Greater Minnesota); 711 or 1-800-627-3529 (Minnesota Relay). You may also send an e-mail to ADRequest.dot@state.mn.us. (Please request at least one week in advance.)