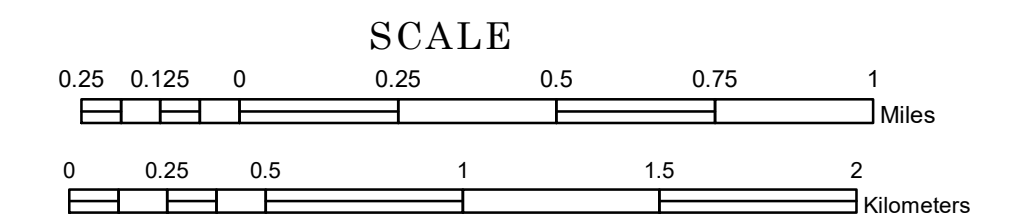


TOWNSHIP OF CENTER CREEK

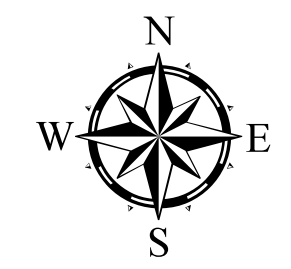
PREPARED BY THE
MINNESOTA DEPARTMENT OF TRANSPORTATION
OFFICE OF TRANSPORTATION SYSTEM MANAGEMENT

IN COOPERATION WITH
U.S. DEPARTMENT OF TRANSPORTATION
FEDERAL HIGHWAY ADMINISTRATION

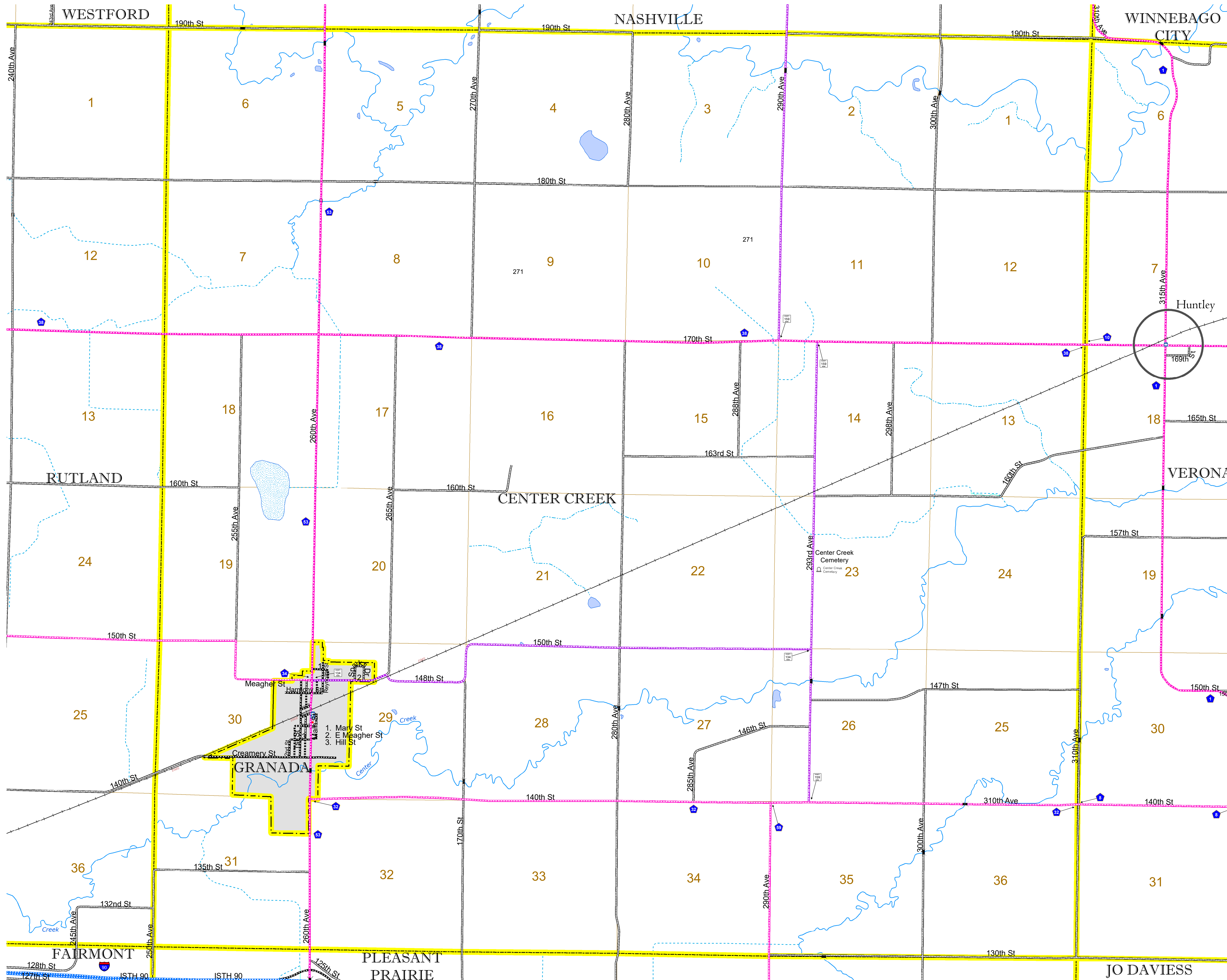


2024

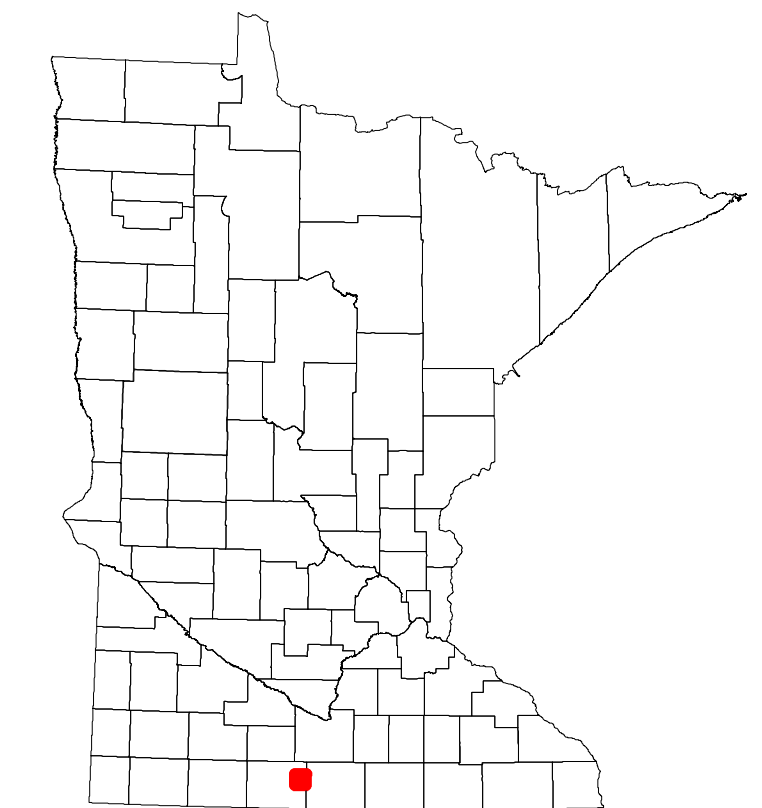
Projection:
Transverse Mercator
NAD 1986
UTM Zone 15



North American Datum
of 1986



ROAD AND ROADWAY FEATURES		BOUNDARY FEATURES	
INTERSTATE	CONCRETE	TRIBAL LAND	STATE OF MINNESOTA
US HIGHWAY	BITUMINOUS	COUNTY	MUNICIPALITY
MN HIGHWAY	GRAVEL	UNORGANIZED TERRITORY	FEDERAL ADJUSTED URBAN AREA (2014)
COUNTY STATE AID HIGHWAY	DIRT/UNIMPROVED	CIVIL TOWNSHIP	CONGRESSIONAL TOWNSHIP
COUNTY ROAD	OTHER	SECTION	MILITARY
TOWNSHIP ROAD	UNKNOWN	VOYAGEURS NATIONAL PARK	BOUNDARY WATERS CANOE AREA WILDERNESS
UNORGANIZED TERRITORY ROAD		STATE PARK	NATIONAL FOREST
OTHER ROADS		NATIONAL AND STATE FOREST	STATE FOREST
Municipal	RAMP OR CONNECTOR	NATIONAL TRAIL	WILDLIFE REFUGUE AREA
Private	INTERSTATE EXIT	AIRPORT RUNWAY	HYDROLOGIC FEATURES
Native Service	GREAT RIVER ROAD	AVIATION FEATURES	RIVER OR STREAM (PERMANENT)
National Park		GENERAL AIRPORT	LAKE, POND OR RESERVOIR
National Wildlife		AIRSTRIP	STREAM (INTERMITTENT)
State Park		SEAPLANE	DRAINAGE DITCH
Present		AIRPORT RUNWAY	WETLAND
			ISLAND OR LAND
			REGIONAL WATERSHED



Population (U.S. Census 2010): 217

To request information from this document in an alternative format, call 651-366-4718 or 1-800-657-3774 (Greater Minnesota); 711 or 1-800-627-3529 (Minnesota Relay). You may also send an e-mail to ADRequest.dot@state.mn.us. (Please request at least one week in advance.)