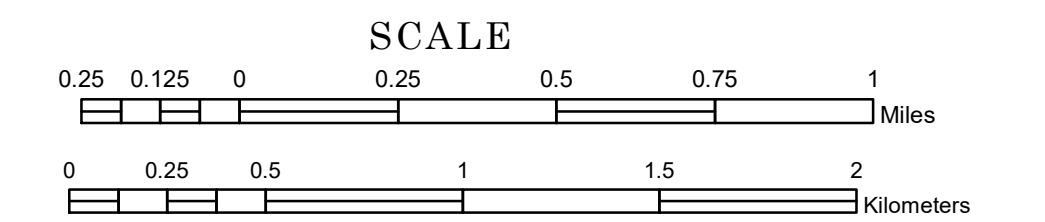


TOWNSHIP OF BOGUS BROOK

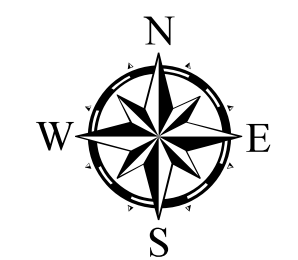
PREPARED BY THE
MINNESOTA DEPARTMENT OF TRANSPORTATION
OFFICE OF TRANSPORTATION SYSTEM MANAGEMENT

IN COOPERATION WITH
U.S. DEPARTMENT OF TRANSPORTATION
FEDERAL HIGHWAY ADMINISTRATION



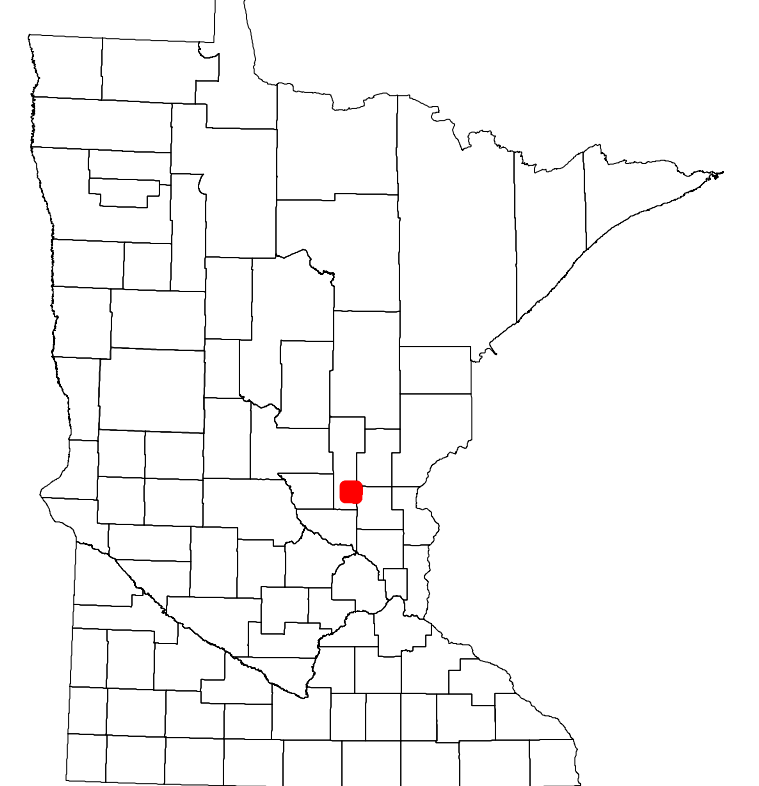
1 in = 1,600 ft
2024

Projection:
Transverse Mercator
NAD 1986
UTM Zone 15

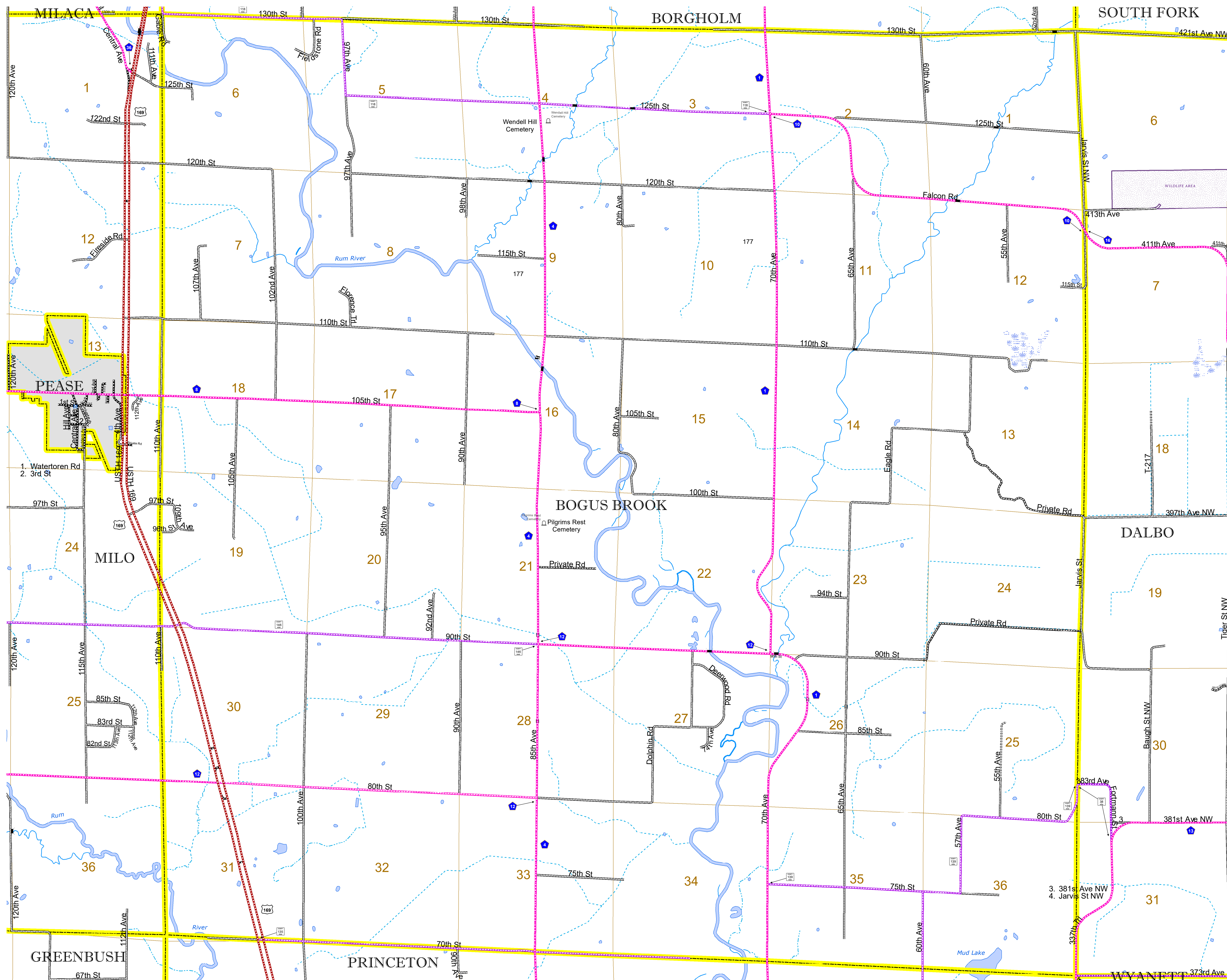


North American Datum
of 1986

ROAD AND ROADWAY FEATURES		BOUNDARY FEATURES	
INTERSTATE	CONCRETE	STATE OF MINNESOTA	SECTION
US HIGHWAY	BITUMINOUS	COUNTY	MUNICIPALITY
MN HIGHWAY	GRAVEL	UNINCORPORATED COMMUNITY	MILITARY
COUNTY STATE AID HIGHWAY	DIRT/UNIMPROVED	CITY CENTER	VOYAGEURS NATIONAL PARK
COUNTY ROAD	OTHER	CITY CENTER	BOUNDARY WATERS GANOE AREA WILDERNESS
TOWNSHIP ROAD	UNKNOWN	CITY CENTER	STATE PARK
UNORGANIZED TERRITORY ROAD		CITY CENTER	NATIONAL FOREST
OTHER ROADS		CITY CENTER	NATIONAL AND STATE FOREST
Municipal		CITY CENTER	STATE FOREST
Private		CITY CENTER	NATIONAL TRAIL
National Monument		CITY CENTER	WILDLIFE REFUGUE AREA
National Wildlife Refuge		CITY CENTER	WILDLIFE MANAGEMENT AREA
State Park		CITY CENTER	HYDROLOGIC FEATURES
Present		CITY CENTER	RIVER OR STREAM (PERMANENT)
		CITY CENTER	LAKE, POND OR RESERVOIR
		CITY CENTER	STREAM (INTERMITTENT)
		CITY CENTER	DRAINAGE DITCH
		CITY CENTER	WETLAND
		CITY CENTER	ISLAND OR LAND
		CITY CENTER	REGIONAL WATERSHED



Population (U.S. Census 2010): 1421



To request information from this document in an alternative format, call 651-366-4718 or 1-800-657-3774 (Greater Minnesota); 711 or 1-800-627-3529 (Minnesota Relay). You may also send an e-mail to ADARrequest.dot@state.mn.us. (Please request at least one week in advance.)