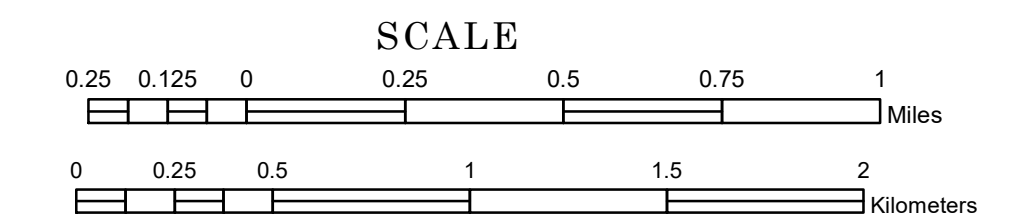


TOWNSHIP OF LAMBERTON

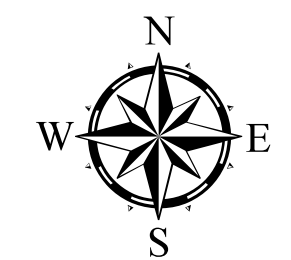
PREPARED BY THE
MINNESOTA DEPARTMENT OF TRANSPORTATION
OFFICE OF TRANSPORTATION SYSTEM MANAGEMENT

IN COOPERATION WITH
U.S. DEPARTMENT OF TRANSPORTATION
FEDERAL HIGHWAY ADMINISTRATION



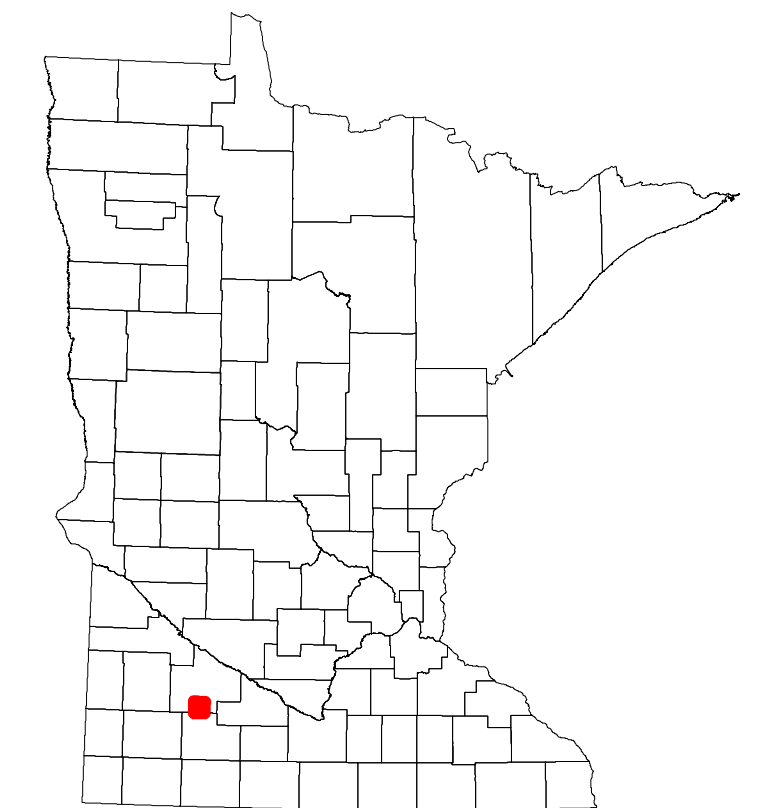
1 in = 1,600 ft
2024

Projection:
Transverse Mercator
NAD 1986
UTM Zone 15

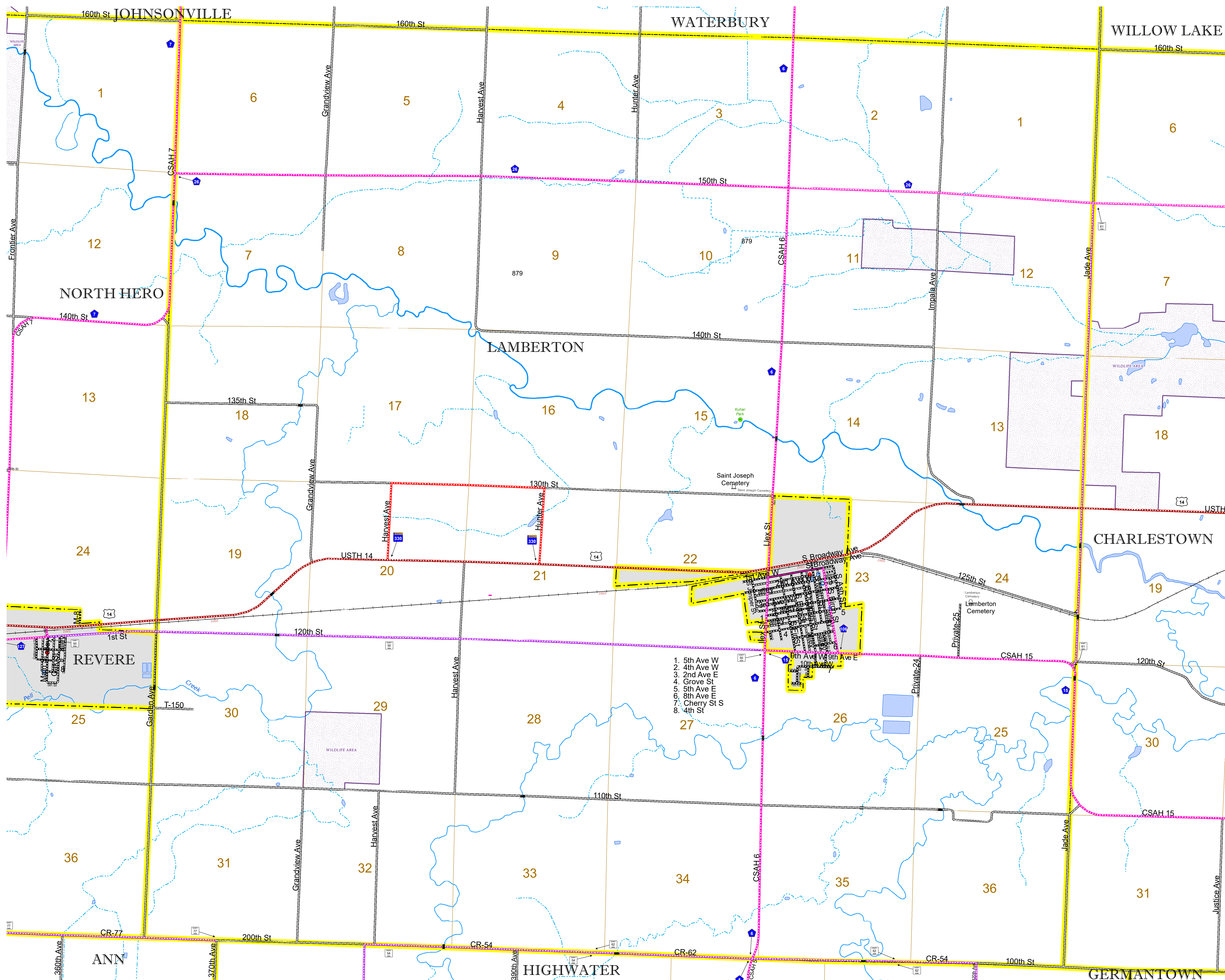


North American Datum
of 1986

| ROAD AND ROADWAY FEATURES | | BOUNDARY FEATURES | |
|----------------------------|-------------------|--------------------------|---------------------------------------|
| INTERSTATE | CONCRETE | TRIBAL LAND | STATE OF MINNESOTA |
| US HIGHWAY | BITUMINOUS | COUNTY | MUNICIPALITY |
| MN HIGHWAY | GRAVEL | UNINCORPORATED COMMUNITY | SECTION |
| COUNTY STATE AID HIGHWAY | DIRT/UNIMPROVED | MILITARY | VOYAGEURS NATIONAL PARK |
| COUNTY ROAD | OTHER | UNINCORPORATED COMMUNITY | BOUNDARY WATERS CANOE AREA WILDERNESS |
| TOWNSHIP ROAD | UNKNOWN | UNINCORPORATED COMMUNITY | STATE PARK |
| UNORGANIZED TERRITORY ROAD | UNKNOWN | UNINCORPORATED COMMUNITY | NATIONAL FOREST |
| OTHER ROADS | | UNINCORPORATED COMMUNITY | NATIONAL AND STATE FOREST |
| Municipal | RAMP OR CONNECTOR | UNINCORPORATED COMMUNITY | STATE FOREST |
| Private | INTERSTATE EXIT | UNINCORPORATED COMMUNITY | NATIONAL TRAIL |
| National Monument | GREAT RIVER ROAD | UNINCORPORATED COMMUNITY | WILDLIFE REFUGUE AREA |
| National Wildlife Refuge | | UNINCORPORATED COMMUNITY | WILDLIFE MANAGEMENT AREA |
| State Park | | UNINCORPORATED COMMUNITY | HYDROLOGIC FEATURES |
| Present | | UNINCORPORATED COMMUNITY | RIVER OR STREAM (PERMANENT) |
| | | UNINCORPORATED COMMUNITY | LAKE, POND OR RESERVOIR |
| | | UNINCORPORATED COMMUNITY | STREAM (INTERMITTENT) |
| | | UNINCORPORATED COMMUNITY | DRAINAGE DITCH |
| | | UNINCORPORATED COMMUNITY | WETLAND |
| | | UNINCORPORATED COMMUNITY | ISLAND OR LAND |
| | | UNINCORPORATED COMMUNITY | REGIONAL WATERSHED |



Population (U.S. Census 2010): 193



1. 5th Ave W
2. 4th Ave W
3. 2nd Ave E
4. Grove St
5. 5th Ave
6. 8th Ave
7. Cherry St S
8. 4th St

To request information from this document in an alternative format, call 651-366-4718 or 1-800-657-3774 (Greater Minnesota); 711 or 1-800-627-3529 (Minnesota Relay). You may also send an e-mail to ADArequest.dot@state.mn.us. (Please request at least one week in advance.)