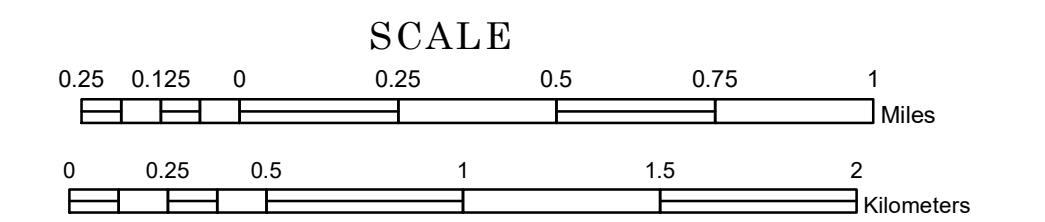


TOWNSHIP OF NEW AVON

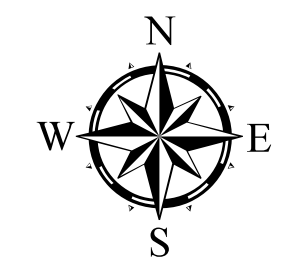
PREPARED BY THE
MINNESOTA DEPARTMENT OF TRANSPORTATION
OFFICE OF TRANSPORTATION SYSTEM MANAGEMENT

IN COOPERATION WITH
U.S. DEPARTMENT OF TRANSPORTATION
FEDERAL HIGHWAY ADMINISTRATION



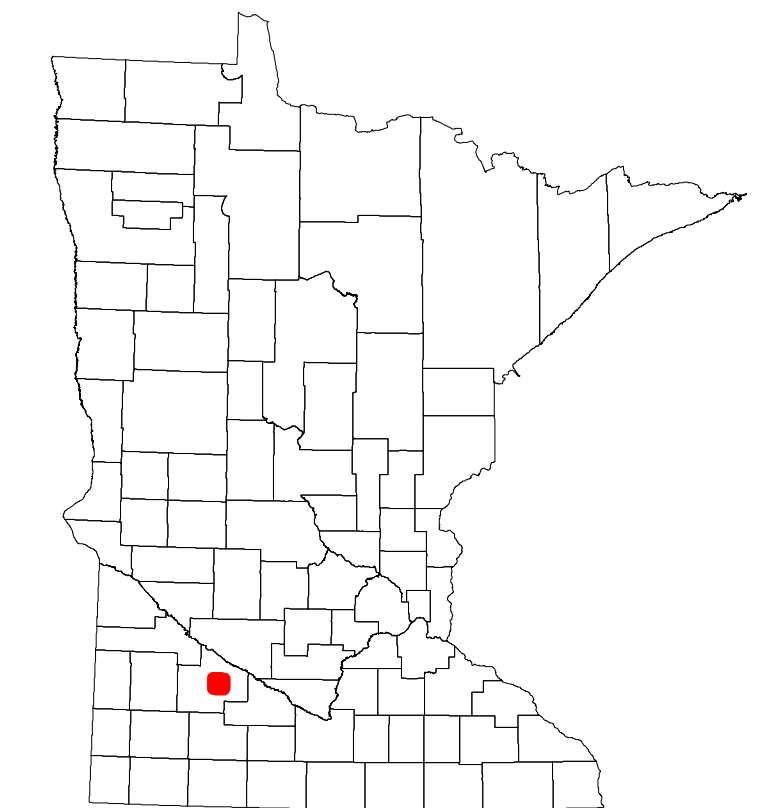
2023

Projection:
Transverse Mercator
NAD 1986
UTM Zone 15

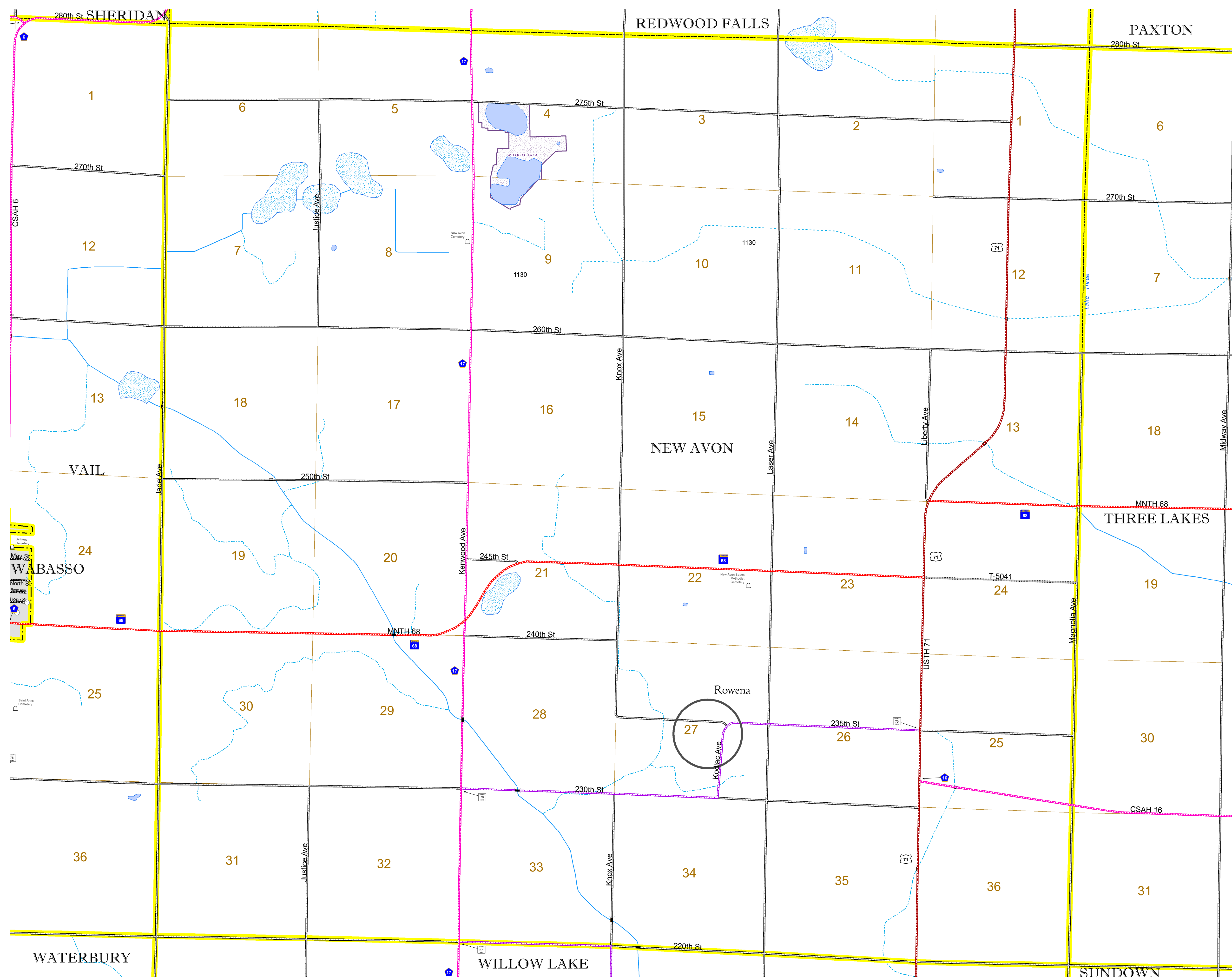


North American Datum
of 1986

ROAD AND ROADWAY FEATURES		AVIATION FEATURES	
INTERSTATE	CONCRETE	COMMERCIAL AIRPORT	GENERAL AIRPORT
US HIGHWAY	BITUMINOUS	AIRSTRIP	SEAPLANE
MN HIGHWAY	GRAVEL	AIRPORT RUNWAY	
COUNTY STATE AID HIGHWAY	DIRT/UNIMPROVED		
COUNTY ROAD	OTHER		
TOWNSHIP ROAD	UNKNOWN		
UNORGANIZED TERRITORY ROAD			
OTHER ROADS			
Municipal	RAMP OR CONNECTOR		
Private	INTERSTATE EXIT		
National Monument	GREAT RIVER ROAD		
National Wildlife			
State Game			
State Park			
Preserve			
RAILROAD AND RAILWAY FEATURES		BOUNDARY FEATURES	
EMPIRE BUILDER STATION (AMTRAK)	TRIBAL LAND	STATE OF MINNESOTA	COUNTY
NORTHSTAR STATION (COMMUTER)		MUNICIPALITY	UNORGANIZED TERRITORY
		FEDERAL ADJUSTED URBAN AREA (2014)	CIVIL TOWNSHIP
		CONGRESSIONAL TOWNSHIP	SECTION
		MILITARY	VOYAGEURS NATIONAL PARK
			BOUNDARY WATERS CANOE AREA WILDERNESS
			STATE PARK
			REGIONAL PARK
			NATIONAL FOREST
			NATIONAL AND STATE FOREST
			STATE FOREST
			NATIONAL TRAIL
			WILDLIFE REFUGUE AREA
			WILDLIFE MANAGEMENT AREA
INFRASTRUCTURE FEATURES		HYDROLOGIC FEATURES	
LONG BRIDGE (200' OR GREATER SPAN)		RIVER OR STREAM (PERMANENT)	LAKE, POND OR RESERVOIR
MAJOR BRIDGE (20' TO 200' SPAN)		STREAM (INTERMITTENT)	DRAINAGE DITCH
MINOR BRIDGE (5' TO 20' SPAN)			WETLAND
DAM			ISLAND OR LAND
LOCK AND DAM			REGIONAL WATERSHED
CITY CENTERS			
STATE CAPITAL	COUNTY SEAT	CITY CENTER	UNINCORPORATED COMMUNITY
PUBLIC SERVICE FEATURES			
MNDOT OFFICE	MNDOT TRUCK STATION	HIGHWAY PATROL DISTRICT OFFICE	STATE TRAVEL INFORMATION CENTER
REST AREA (FULL SERVICE)	REST AREA (VAULT TOILET)	WAYSIDE (VAULT OR PITY TOILET)	PARK AND RIDE LOT
PORT OF ENTRY	PUBLIC ACCESS POINT	MN STATE COLLEGE AND UNIVERSITY SYSTEM (MNSCU)	UNIVERSITY OF MN SYSTEM
FAIRGROUNDS			
CULTURAL FEATURES			
STATE HISTORICAL MARKER	HISTORIC DISTRICT	HISTORIC SITE	



Population (U.S. Census 2010): 191



To request information from this document in an alternative format, call 651-366-4718 or 1-800-657-3774 (Greater Minnesota); 711 or 1-800-627-3529 (Minnesota Relay). You may also send an e-mail to ADRequest.dot@state.mn.us. (Please request at least one week in advance.)