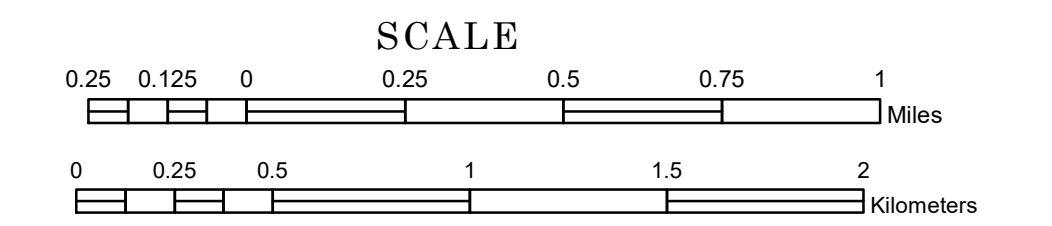


TOWNSHIP OF SPRINGDALE

PREPARED BY THE
MINNESOTA DEPARTMENT OF TRANSPORTATION
OFFICE OF TRANSPORTATION SYSTEM MANAGEMENT

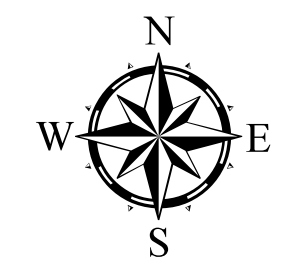
IN COOPERATION WITH
U.S. DEPARTMENT OF TRANSPORTATION
FEDERAL HIGHWAY ADMINISTRATION



1 in = 1,600 ft

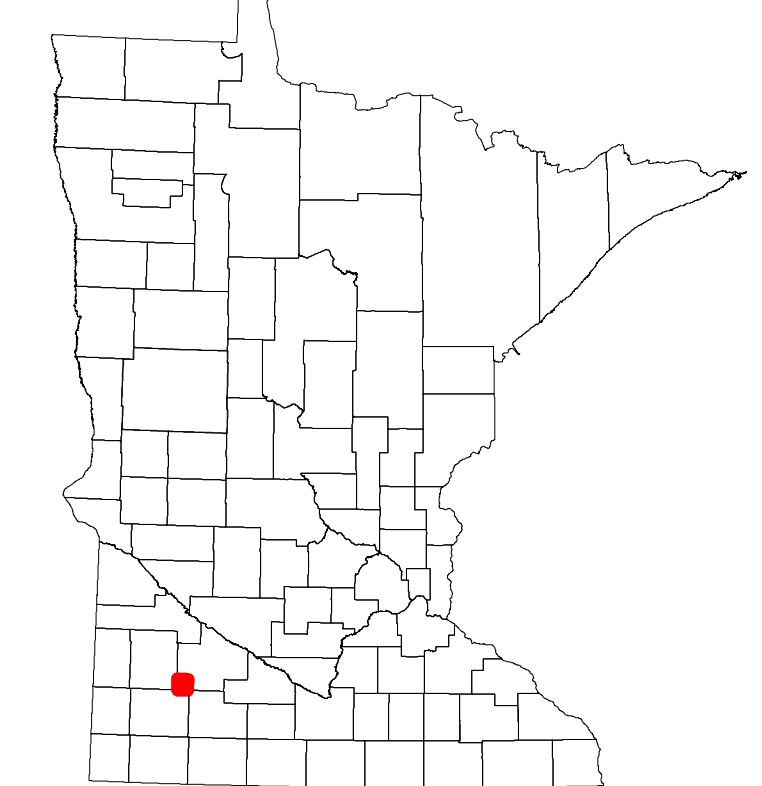
2024

Projection:
Transverse Mercator
NAD 1986
UTM Zone 15

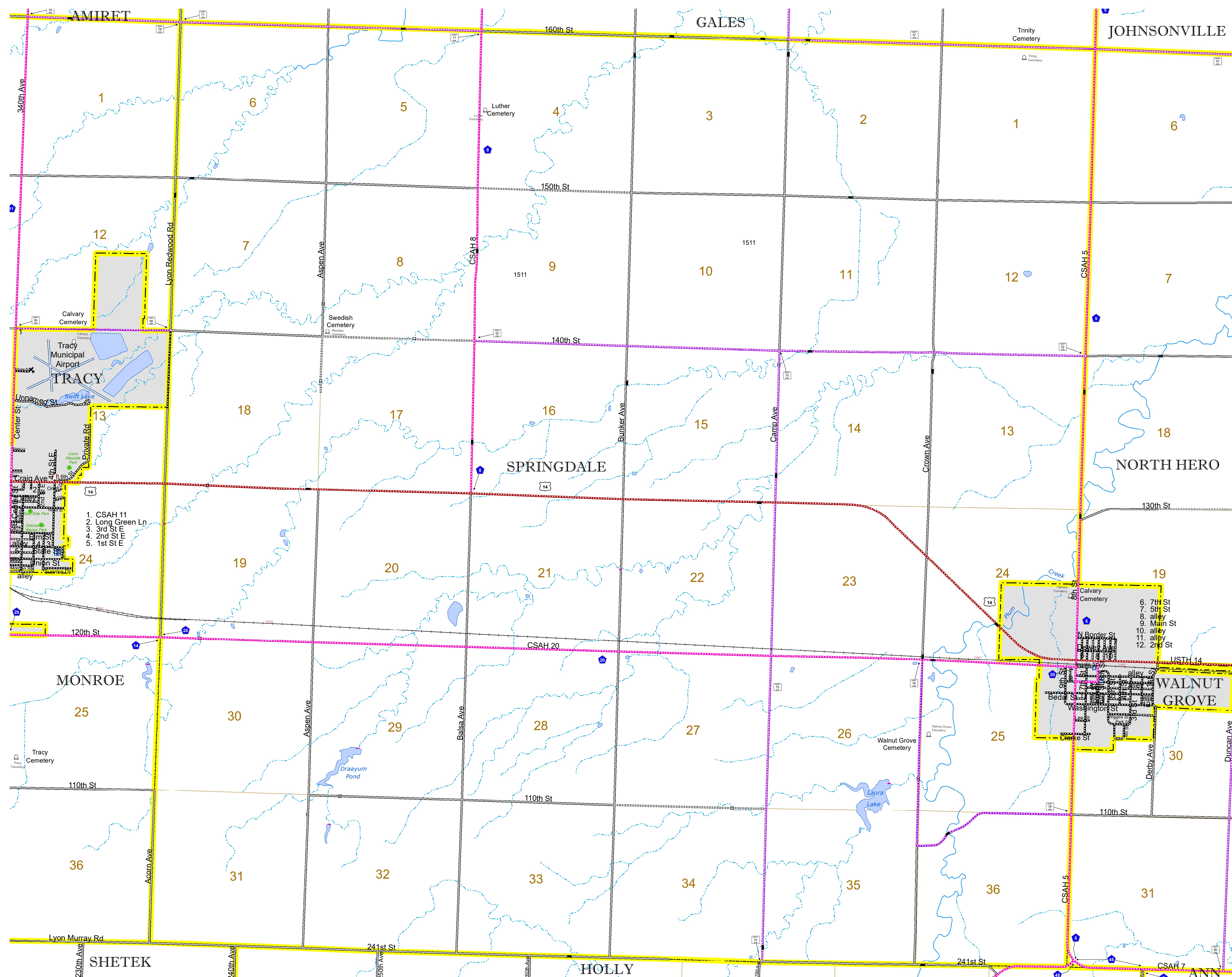


North American Datum
of 1986

ROAD AND ROADWAY FEATURES		AVIATION FEATURES		
INTERSTATE	CONCRETE	COMMERCIAL AIRPORT	GENERAL AIRPORT	
US HIGHWAY	BITUMINOUS	AIRSTRIP	SEAPLANE	
MN HIGHWAY	GRAVEL	AIRPORT RUNWAY	AIRPORT RUNWAY	
COUNTY STATE AID HIGHWAY	DIRT/UNIMPROVED			
COUNTY ROAD	OTHER			
TOWNSHIP ROAD	UNKNOWN			
UNORGANIZED TERRITORY ROAD				
OTHER ROADS				
Municipal	RAMP OR CONNECTOR			
Private	INTERSTATE EXIT			
National Monument	GREAT RIVER ROAD			
National Wildlife				
State Game				
State Park				
Present				
RAILROAD AND RAILWAY FEATURES		BOUNDARY FEATURES		
EMPIRE BUILDER STATION (AMTRAK)	TRIBAL LAND	STATE OF MINNESOTA	COUNTY	
NORTHSTAR STATION (COMPUTER)	STATE OF MINNESOTA	MUNICIPALITY	UNORGANIZED TERRITORY	
LIGHT RAIL		FEDERAL ADJUSTED URBAN AREA (2014)	CIVIL TOWNSHIP	
BLUE LINE			CONGRESSIONAL TOWNSHIP	
GREEN LINE			SECTION	
INFRASTRUCTURE FEATURES			MILITARY	
LONG BRIDGE (200' or Greater Span)			VOYAGEURS NATIONAL PARK	
MAJOR BRIDGE (20' to 200' Span)			BOUNDARY WATERS CANOE AREA WILDERNESS	
MINOR BRIDGE (5' to 20' Span)			STATE PARK	
DAM			NATIONAL FOREST	
LOCK AND DAM			NATIONAL AND STATE FOREST	
CITY CENTERS			STATE FOREST	
STATE CAPITAL			NATIONAL TRAIL	
COUNTY SEAT			WILDLIFE REFUGE AREA	
CITY CENTER			WILDLIFE MANAGEMENT AREA	
UNINCORPORATED COMMUNITY			HYDROLOGIC FEATURES	
PUBLIC SERVICE FEATURES			RIVER OR STREAM (PERMANENT)	LAKE, POND OR RESERVOIR
MNDOT OFFICE			STREAM (INTERMITTENT)	DRAINAGE DITCH
MNDOT TRUCK STATION				WETLAND
HIGHWAY PATROL DISTRICT OFFICE				ISLAND OR LAND
STATE TRAVEL INFORMATION CENTER				REGIONAL WATERSHED
REST AREA (Full Service)				
REST AREA (Vault Toilet)				
WAYSIDE (Vault or Pit Toilet)				
PARK AND RIDE LOT				
PORT OF ENTRY				
PUBLIC ACCESS POINT				
MN STATE COLLEGE AND UNIVERSITY SYSTEM (MNSCU)				
UNIVERSITY OF MN SYSTEM				
FARMSHOULDS				
CULTURAL FEATURES				
STATE HISTORICAL MARKER				
HISTORIC DISTRICT				
HISTORIC SITE				
MONUMENT				



Population (U.S. Census 2010): 217



To request information from this document in an alternative format, call 651-366-4718 or 1-800-657-3774 (Greater Minnesota); 711 or 1-800-627-3529 (Minnesota Relay). You may also send an e-mail to ADArequest.dot@state.mn.us. (Please request at least one week in advance.)