

TOWNSHIP OF CAMP 5

PREPARED BY THE
MINNESOTA DEPARTMENT OF TRANSPORTATION
OFFICE OF TRANSPORTATION SYSTEM MANAGEMENT

IN COOPERATION WITH
U.S. DEPARTMENT OF TRANSPORTATION
FEDERAL HIGHWAY ADMINISTRATION



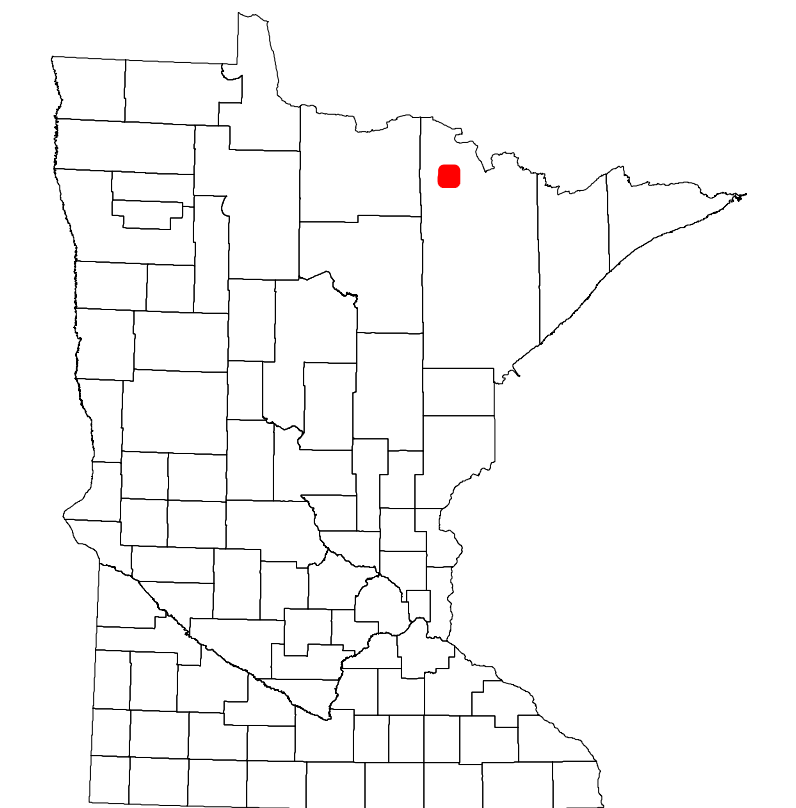
1 in = 1,600 ft
2023

Projection:
Transverse Mercator
NAD 1986
UTM Zone 15

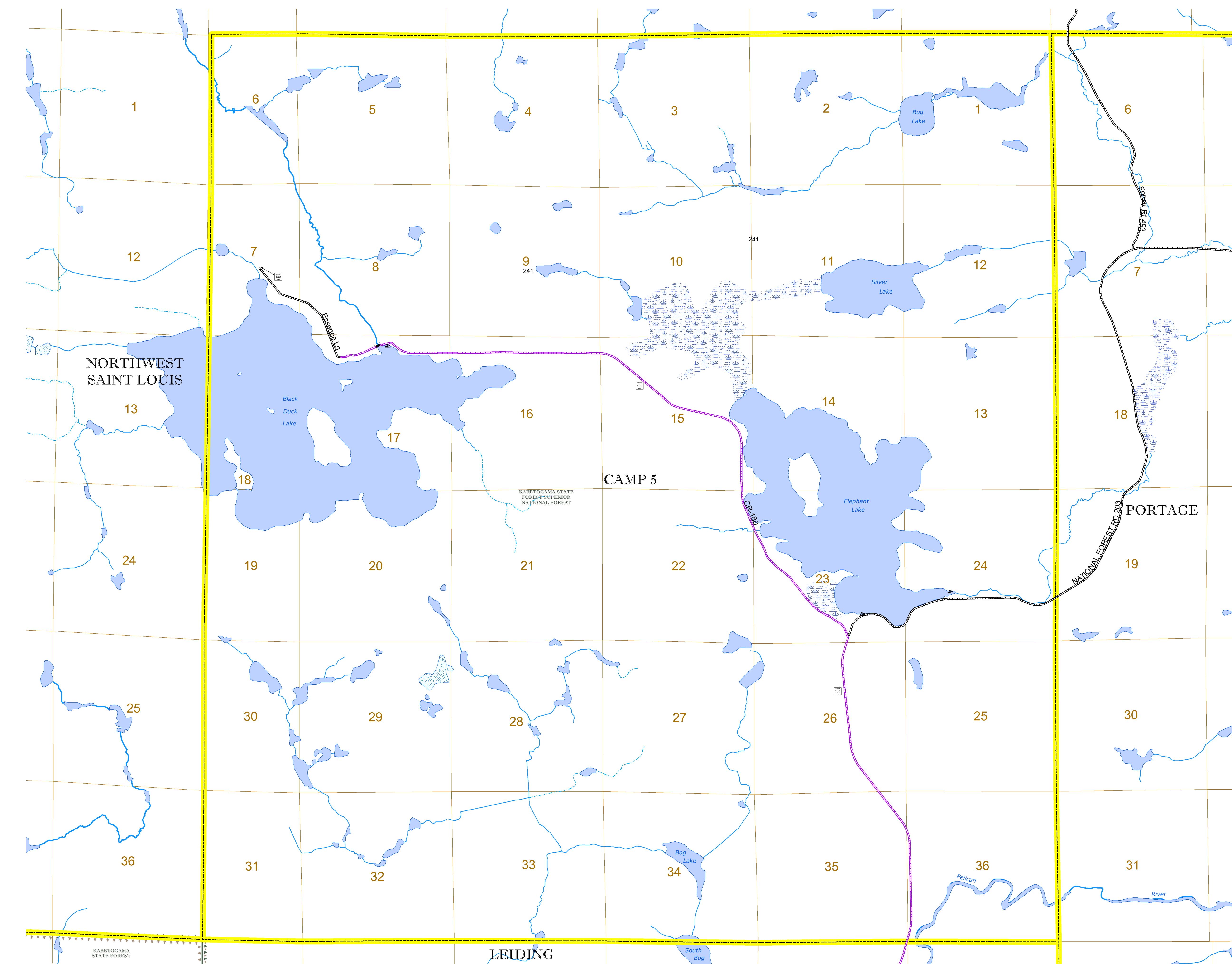


North American Datum
of 1986

ROAD AND ROADWAY FEATURES		AVIATION FEATURES	
INTERSTATE		CONCRETE	
US HIGHWAY		BITUMINOUS	
MN HIGHWAY		GRAVEL	
COUNTY STATE AID HIGHWAY		DIRT/UNIMPROVED	
COUNTY ROAD		OTHER	
TOWNSHIP ROAD		UNKNOWN	
UNORGANIZED TERRITORY ROAD		RAMP OR CONNECTOR	
OTHER ROADS		INTERSTATE EXIT	
Municipal		GREAT RIVER ROAD	
Private			
National Monument			
State Forest			
Nature Service			
National Park			
National Wildlife			
State Game			
Mulden			
State Park			
Preserve			
RAILROAD AND RAILWAY FEATURES		BOUNDARY FEATURES	
EMPIRE BUILDER STATION (AMTRAK)		TRIBAL LAND	
NORTHSTAR STATION (COMMUTER)		STATE OF MINNESOTA	
LIGHT RAIL		COUNTY	
BLUE LINE		MUNICIPALITY	
GREEN LINE		UNORGANIZED TERRITORY	
LONG BRIDGE (200' OR GREATER SPAN)		FEDERAL ADJUSTED URBAN AREA (2014)	
MAJOR BRIDGE (20' TO 200' SPAN)		CIVIL TOWNSHIP	
MINOR BRIDGE (5' TO 20' SPAN)		CONGRESSIONAL TOWNSHIP	
DAM		SECTION	
LOCK-AND-DAM		MILITARY	
CITY CENTERS		VOYAGEURS NATIONAL PARK	
STATE CAPITAL		BOUNDARY WATERS CANOE AREA WILDERNESS	
COUNTY SEAT		STATE PARK	
CITY CENTER		REGIONAL PARK	
UNINCORPORATED COMMUNITY		NATIONAL FOREST	
PUBLIC SERVICE FEATURES		NATIONAL AND STATE FOREST	
MNDOT OFFICE		STATE FOREST	
MNDOT TRUCK STATION		NATIONAL TRAIL	
HIGHWAY PATROL DISTRICT OFFICE		WILDLIFE REFUGUE AREA	
STATE TRAVEL INFORMATION CENTER		WILDLIFE MANAGEMENT AREA	
REST AREA (FULL SERVICE)		HYDROLOGIC FEATURES	
REST AREA (VAULT TOILET)		RIVER OR STREAM (PERMANENT)	
WAYSIDE (VAULT OR PIT TOILET)		LAKE, POND OR RESERVOIR	
PARK AND RIDE LOT		STREAM (INTERMITTENT)	
PORT OF ENTRY		DRAINAGE DITCH	
PUBLIC ACCESS POINT		WETLAND	
MN STATE COLLEGE AND UNIVERSITY SYSTEM (MNSCU)		ISLAND OR LAND	
UNIVERSITY OF MN SYSTEM		REGIONAL WATERSHED	
FAIRGROUNDS			
CULTURAL FEATURES			
STATE HISTORICAL MARKER			
HISTORIC DISTRICT			
HISTORIC SITE			
MONUMENT			



Population (U.S. Census 2010): 35



To request information from this document in an alternative format, call 651-366-4718 or 1-800-657-3774 (Greater Minnesota); 711 or 1-800-627-3529 (Minnesota Relay). You may also send an e-mail to ADArequest.dot@state.mn.us. (Please request at least one week in advance.)