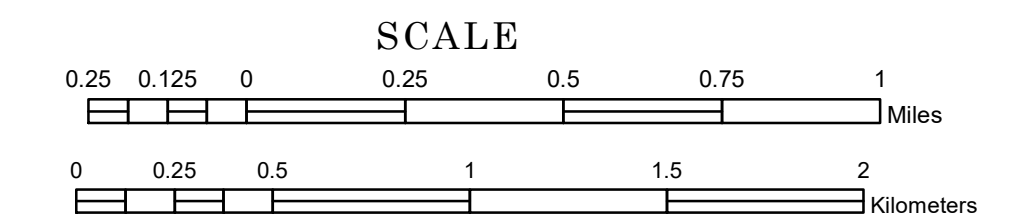


TOWNSHIP OF PEQUAYWAN

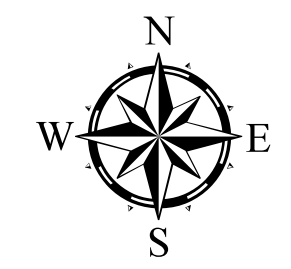
PREPARED BY THE
MINNESOTA DEPARTMENT OF TRANSPORTATION
OFFICE OF TRANSPORTATION SYSTEM MANAGEMENT

IN COOPERATION WITH
U.S. DEPARTMENT OF TRANSPORTATION
FEDERAL HIGHWAY ADMINISTRATION



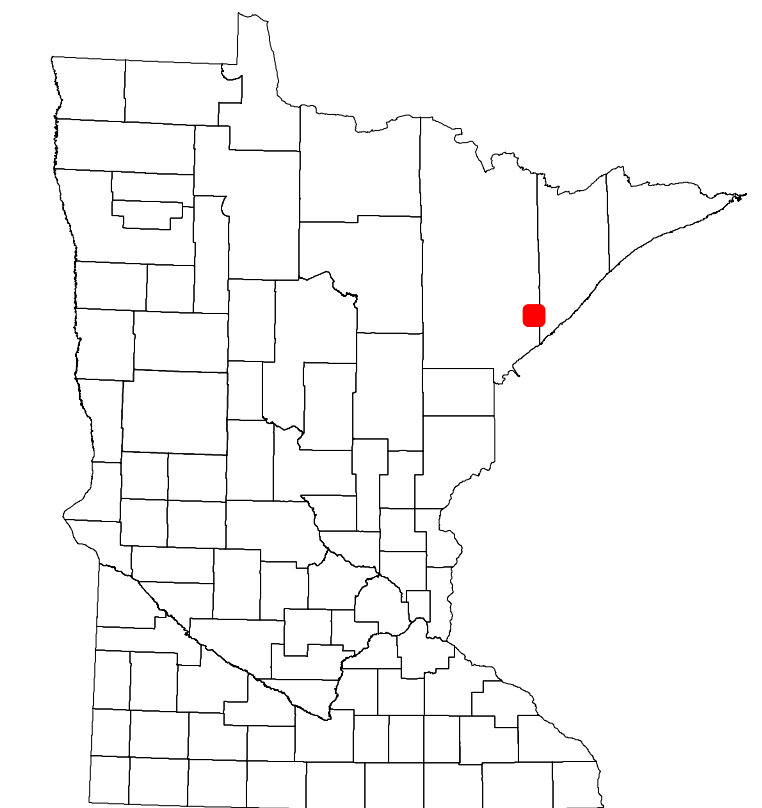
2024

Projection:
Transverse Mercator
NAD 1986
UTM Zone 15

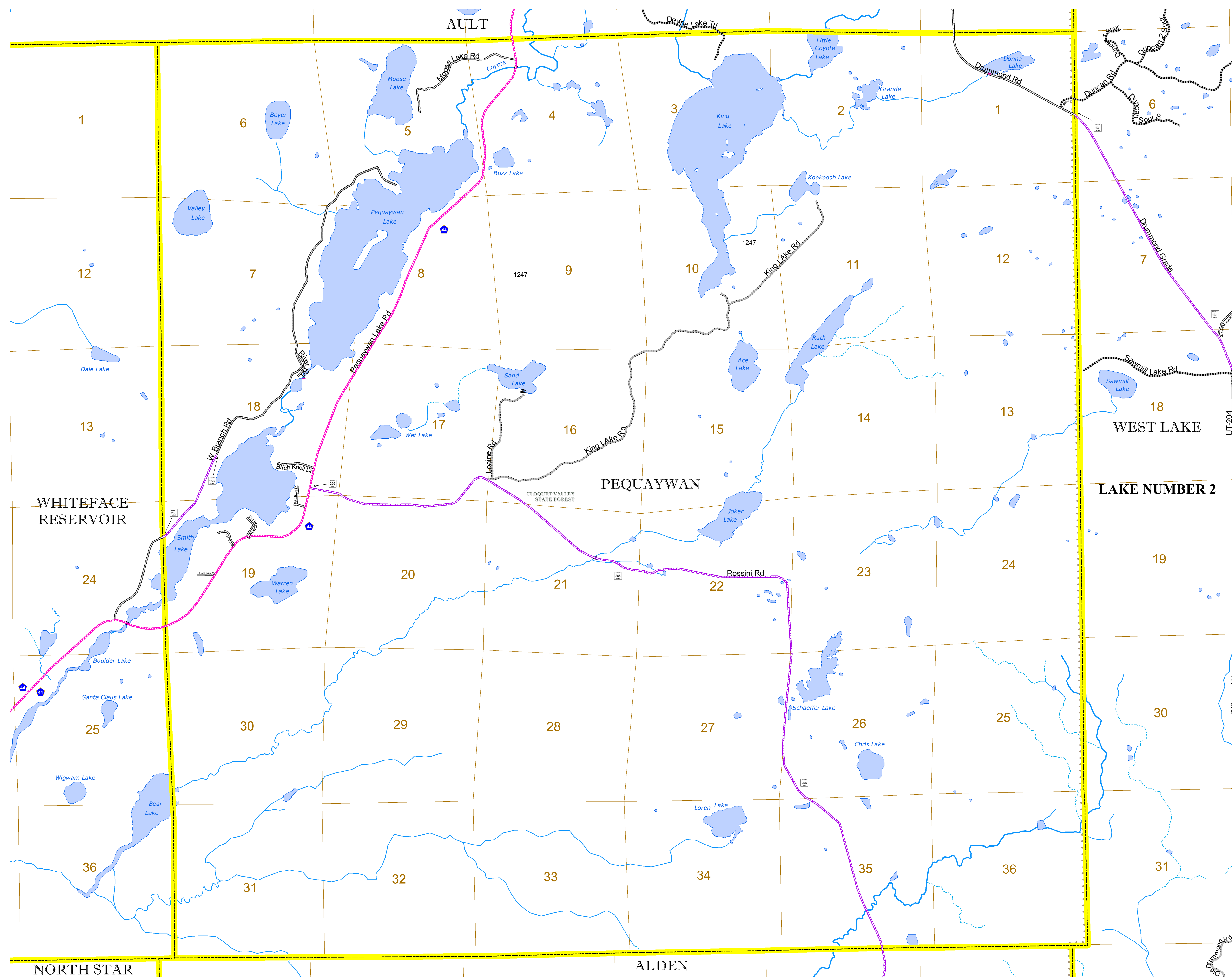


North American Datum
of 1986

| ROAD AND ROADWAY FEATURES | | AVIATION FEATURES | |
|--|-----------------------------|-----------------------------|------------------------------------|
| INTERSTATE | CONCRETE | COMMERCIAL AIRPORT | GENERAL AIRPORT |
| US HIGHWAY | BITUMINOUS | AIRSTRIP | SEAPLANE |
| MN HIGHWAY | GRAVEL | AIRPORT RUNWAY | AIRPORT RUNWAY |
| COUNTY STATE AID HIGHWAY | DIRT/UNIMPROVED | | |
| COUNTY ROAD | OTHER | | |
| TOWNSHIP ROAD | UNKNOWN | | |
| UNORGANIZED TERRITORY ROAD | | | |
| OTHER ROADS | | | |
| Municipal | RAMP OR CONNECTOR | | |
| Private | INTERSTATE EXIT | | |
| Nature Service | GREAT RIVER ROAD | | |
| Military | | | |
| | | | |
| RAILROAD AND RAILWAY FEATURES | | BOUNDARY FEATURES | |
| EMPIRE BUILDER STATION (AMTRAK) | TRIBAL LAND | STATE OF MINNESOTA | COUNTY |
| NORTHSTAR STATION (COMMUTER) | STATE OF MINNESOTA | MUNICIPALITY | MUNICIPALITY |
| LIGHT RAIL | UNINCORPORATED COMMUNITY | UNINCORPORATED TERRITORY | FEDERAL ADJUSTED URBAN AREA (2014) |
| BLUE LINE | | CIVIL TOWNSHIP | CONGRESSIONAL TOWNSHIP |
| GREEN LINE | | | |
| INFRASTRUCTURE FEATURES | | HYDROLOGIC FEATURES | |
| LONG BRIDGE (200' or Greater Span) | WILDLIFE REFUGES | WILDLIFE REFUGES | WILDLIFE REFUGES |
| MAJOR BRIDGE (20' to 200' Span) | WILDLIFE MANAGEMENT AREA | WILDLIFE MANAGEMENT AREA | WILDLIFE MANAGEMENT AREA |
| MINOR BRIDGE (5' to 20' Span) | RIVER OR STREAM (PERENNIAL) | RIVER OR STREAM (PERENNIAL) | RIVER OR STREAM (PERENNIAL) |
| DAM | LAKE, POND OR RESERVOIR | LAKE, POND OR RESERVOIR | LAKE, POND OR RESERVOIR |
| LOCK AND DAM | STREAM (INTERMITTENT) | STREAM (INTERMITTENT) | STREAM (INTERMITTENT) |
| CITY CENTERS | | CULTURAL FEATURES | |
| STATE CAPITAL | STATE HISTORICAL MARKER | STATE HISTORICAL MARKER | STATE HISTORICAL MARKER |
| COUNTY SEAT | HISTORIC DISTRICT | HISTORIC DISTRICT | HISTORIC DISTRICT |
| CITY CENTER | HISTORIC SITE | HISTORIC SITE | HISTORIC SITE |
| UNINCORPORATED COMMUNITY | MONUMENT | MONUMENT | MONUMENT |
| PUBLIC SERVICE FEATURES | | HYDROLOGIC FEATURES | |
| MNDOT OFFICE | WETLAND | WETLAND | WETLAND |
| MNDOT TRUCK STATION | ISLAND OR LAND | ISLAND OR LAND | ISLAND OR LAND |
| HIGHWAY PATROL DISTRICT OFFICE | REGIONAL WATERSHED | REGIONAL WATERSHED | REGIONAL WATERSHED |
| STATE TRAVEL INFORMATION CENTER | | | |
| REST AREA (Full Service) | | | |
| REST AREA (Vault Toilet) | | | |
| WAYSIDE (Vault or Pit Toilet) | | | |
| PARK AND RIDE LOT | | | |
| PORT OF ENTRY | | | |
| PUBLIC ACCESS POINT | | | |
| MN STATE COLLEGE AND UNIVERSITY SYSTEM (MNSCU) | | | |
| UNIVERSITY OF MN SYSTEM | | | |
| FARSGROUNDS | | | |



Population (U.S. Census 2010): 130



To request information from this document in an alternative format, call 651-366-4718 or 1-800-657-3774 (Greater Minnesota); 711 or 1-800-627-3529 (Minnesota Relay). You may also send an e-mail to ADARrequest.dot@state.mn.us. (Please request at least one week in advance.)