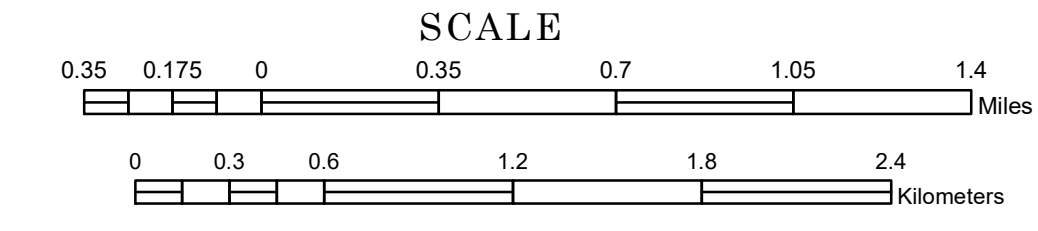


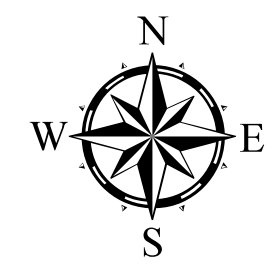
TOWNSHIP OF HOMER

PREPARED BY THE
MINNESOTA DEPARTMENT OF TRANSPORTATION
OFFICE OF TRANSPORTATION SYSTEM MANAGEMENT

IN COOPERATION WITH
U.S. DEPARTMENT OF TRANSPORTATION
FEDERAL HIGHWAY ADMINISTRATION



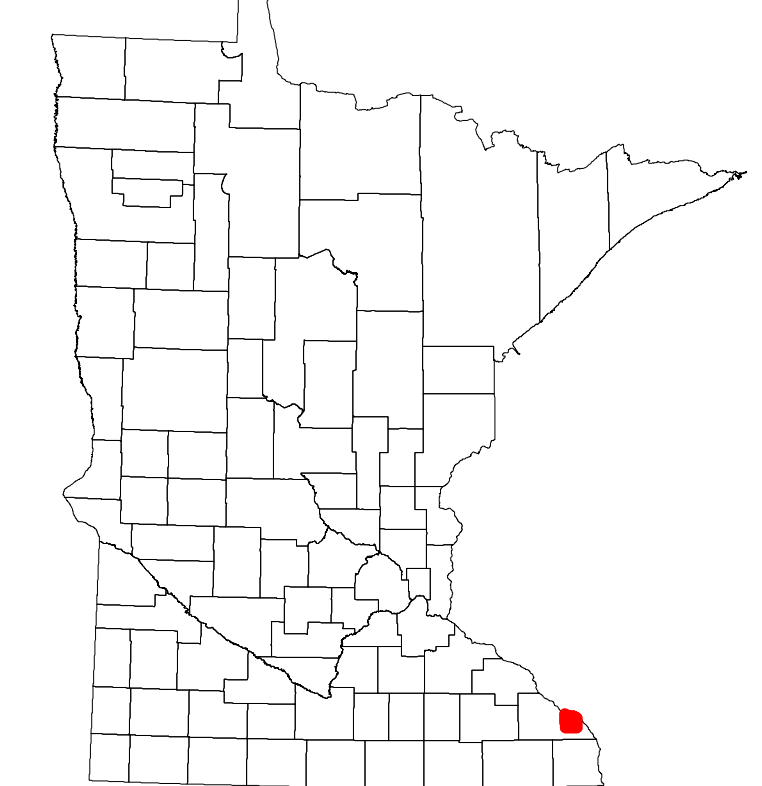
1 in = 2,000 ft
2023



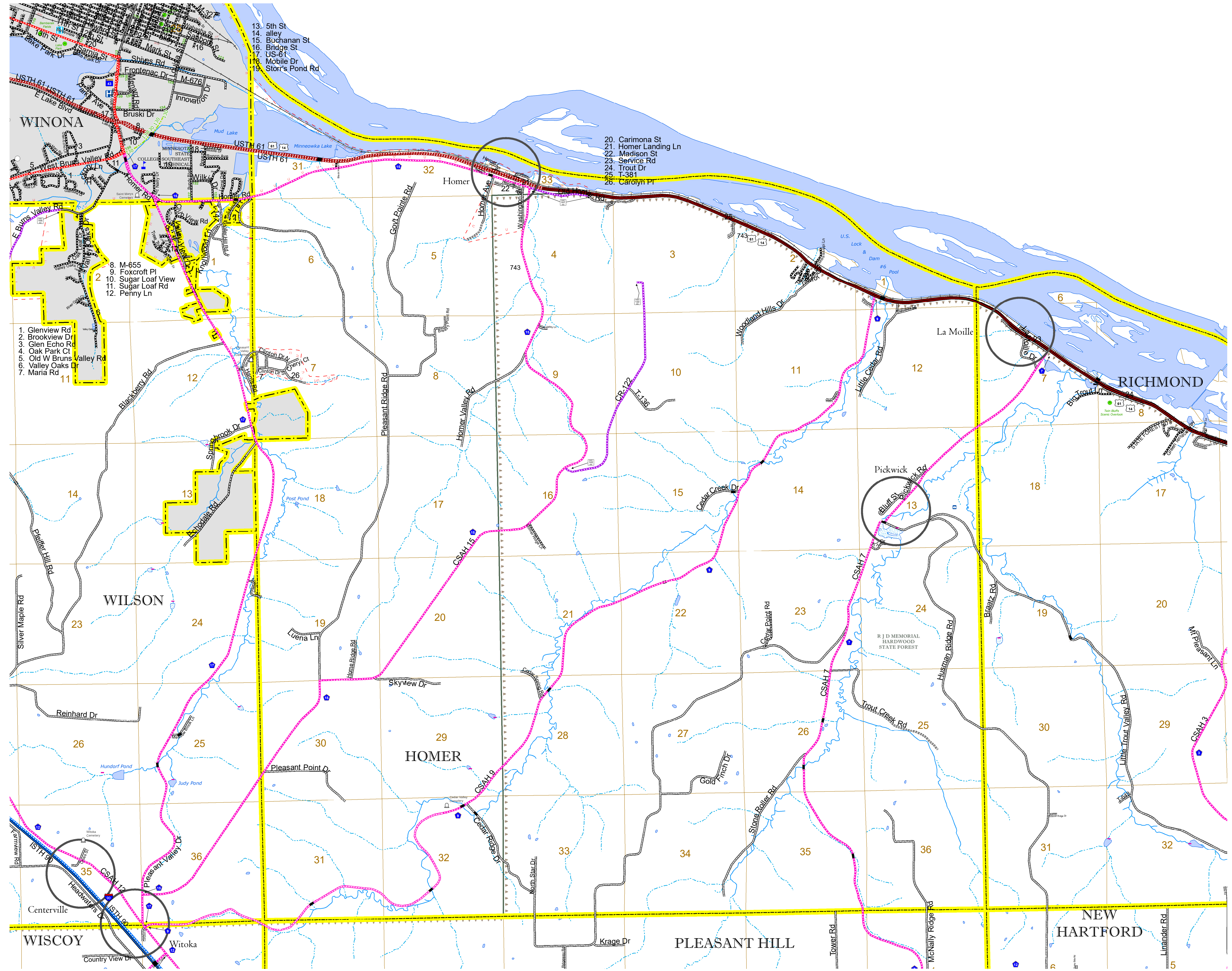
Projection:
Transverse Mercator
NAD 1986
UTM Zone 15

North American Datum
of 1986

ROAD AND ROADWAY FEATURES	AVIATION FEATURES
INTERSTATE	COMMERCIAL AIRPORT
US HIGHWAY	GENERAL AIRPORT
MN HIGHWAY	AIRSTRIP
COUNTY STATE AID HIGHWAY	SEAPLANE
COUNTY ROAD	AIRPORT RUNWAY
TOWNSHIP ROAD	
UNORGANIZED TERRITORY ROAD	
OTHER ROADS	
Municipal	
Private	
National Monument	
State Forest	
Nature Service	
National Park	
National Wildlife	
State Game	
Military	
State Park	
Preserve	
RAILROAD AND RAILWAY FEATURES	BOUNDARY FEATURES
EMPIRE BUILDER STATION (AMTRAK)	TRIBAL LAND
NORTHSTAR STATION (COMMUTER)	STATE OF MINNESOTA
LIGHT RAIL	COUNTY
BLUE LINE	MUNICIPALITY
GREEN LINE	UNORGANIZED TERRITORY
LONG BRIDGE (200' OR GREATER SPAN)	FEDERAL ADJUSTED URBAN AREA (2014)
MAJOR BRIDGE (20' TO 200' SPAN)	CIVIL TOWNSHIP
MINOR BRIDGE (5' TO 20' SPAN)	CONGRESSIONAL TOWNSHIP
LOCK AND DAM	UNINCORPORATED COMMUNITY
	SECTION
	MILITARY
	VOYAGEURS NATIONAL PARK
	BOUNDARY WATERS CANOE AREA WILDERNESS
	STATE PARK
	REGIONAL PARK
	NATIONAL FOREST
	NATIONAL AND STATE FOREST
	STATE FOREST
	NATIONAL TRAIL
	WILDLIFE REFUGUE AREA
	WILDLIFE MANAGEMENT AREA
	HYDROLOGIC FEATURES
	RIVER OR STREAM (PERENNIAL)
	LAKE, POND OR RESERVOIR
	STREAM (INTERMITTENT)
	DRAINAGE DITCH
	WETLAND
	ISLAND OR LAND
	REGIONAL WATERSHED



Population (U.S. Census 2010): 1356



To request information from this document in an alternative format, call 651-366-4718 or 1-800-657-3774 (Greater Minnesota); 711 or 1-800-627-3529 (Minnesota Relay). You may also send an e-mail to ADAREquest.dot@state.mn.us. (Please request at least one week in advance.)