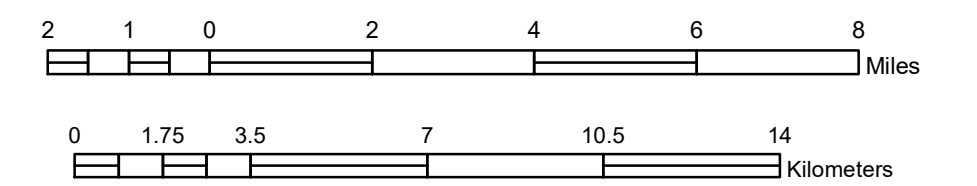


TRIBAL GOVERNMENT MAP BOIS FORTÉ MINNESOTA

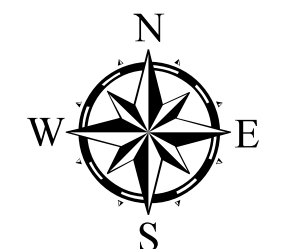
PREPARED BY THE
MINNESOTA DEPARTMENT OF TRANSPORTATION
OFFICE OF TRANSPORTATION SYSTEM MANAGEMENT

IN COOPERATION WITH
U.S. DEPARTMENT OF TRANSPORTATION
FEDERAL HIGHWAY ADMINISTRATION

SCALE

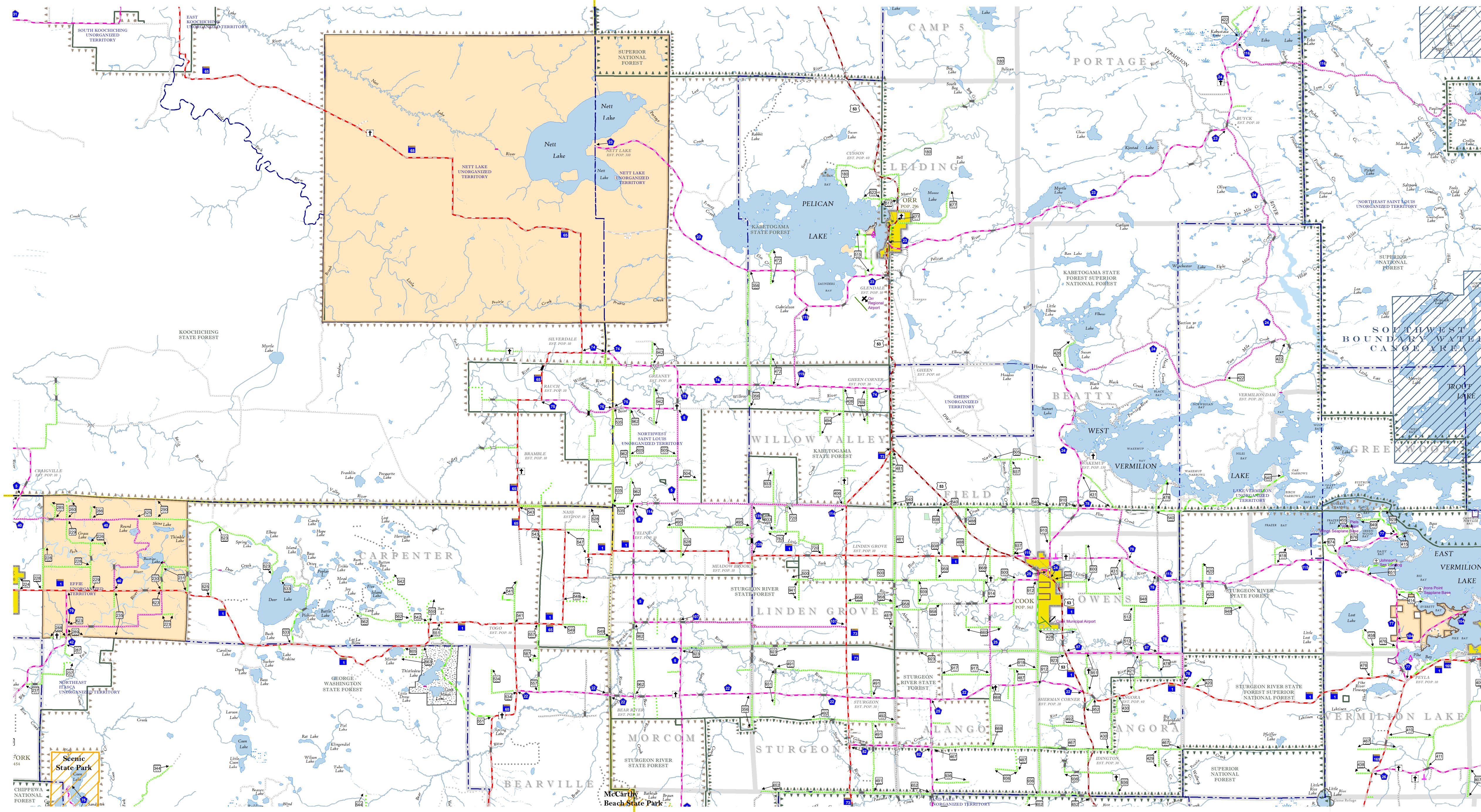


1 in = 12,500 ft
2024



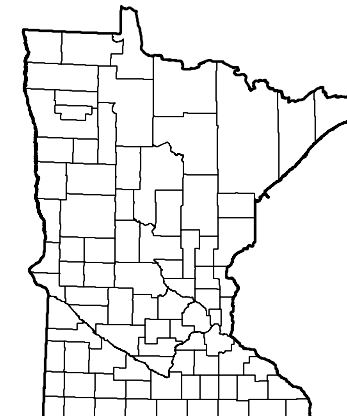
Projection:
Transverse Mercator
NAD 1986
UTM Zone 15

North American Datum
of 1986



ROAD AND ROADWAY FEATURES	
INTERSTATE	CONCRETE
US HIGHWAY	BITUMINOUS
MN HIGHWAY	GRAVEL
COUNTY STATE AID HIGHWAY	DIRT/UNIMPROVED
COUNTY ROAD	OTHER
TOWNSHIP ROAD	UNKNOWN
UNORGANIZED TERRITORY ROAD	
OTHER ROADS	RAMP OR CONNECTOR
Manicel	Private
Native Service	National Monument
Moran	National Wildlife Refuge
	National Forest
	State Park
	Passage
RAILROAD AND RAILWAY FEATURES	
RAILWAY	COMMERCIAL AIRPORT
EMPIRE BUILDER STATION (APRIL)	GENERAL AIRPORT
NORTHSTAR STATION (COMMUTERS)	AIRSTRIP
	INTERSTATE EXIT
	GREAT RIVER ROAD
	SEAPLANE
	AIRPORT RUNWAY
	AIRPORT TAXIWAY
INFRASTRUCTURE FEATURES	
LONG BRIDGE (300' or Greater Span)	TRIBAL LAND
MAJOR BRIDGE (20' to 300' Span)	STATE OF MINNESOTA
MINOR BRIDGE (5' to 20' Span)	COUNTY
DAM	MUNICIPALITY
LOCK AND DAM	UNORGANIZED TERRITORY
	FEDERAL ADJUSTED URBAN AREA (2014)
	CIVIL TOWNSHIP
	CONGRESSIONAL TOWNSHIP
	SECTION
PUBLIC SERVICE FEATURES	
MN DOT OFFICE	MILITARY
MN DOT TRUCK STATION	VOYAGERS NATIONAL PARK
HIGHWAY PATROL DISTRICT OFFICE	BOUNDARY WATERS CANOE AREA WILDERNESS
STATE TRAVEL INFORMATION CENTER	STATE PARK
REST AREA (Full Service)	REGIONAL PARK
REST AREA (Vault Toilet)	NATIONAL FOREST
WAYSIDE (Vault or PA Toilet)	NATIONAL AND STATE FOREST
PARK AND RIDE LOT	STATE FOREST
PORT OF ENTRY	NATIONAL TRAIL
PUBLIC ACCESS POINT	WILDLIFE REFUGE AREA
MN STATE COLLEGE AND UNIVERSITY SYSTEM (MNSCU)	WILDLIFE MANAGEMENT AREA
UNIVERSITY OF MN SYSTEM	HYDROLOGIC FEATURES
FAIRGROUNDS	RIVER OR STREAM (Perennial)
	LAKE, POND OR RESERVOIR
	STREAM (Intermittent)
CULTURAL FEATURES	
STATE HISTORICAL MARKER	DRAINAGE DITCH
HISTORIC DISTRICT	WETLAND
HISTORIC SITE	ISLAND OR LAND
MONUMENT	REGIONAL WATERSHED

Outline Map of Minnesota showing location of the County within the state.



Outline Map of the County.

Area of this County
Land Area
2010 Total County Population



To request information from this document in an alternative format, call 651-366-4718 or 1-800-657-3774 (Greater Minnesota); 711 or 1-800-627-3529 (Minnesota Relay). You may also send an e-mail to ADRequest.dot@state.mn.us. (Please request at least one week in advance.)

NOTE: FOR DETAIL OF COUNTY STATE AID HIGHWAYS AND COUNTY ROADS IN INCORPORATED PLACE, SEE MAPS OF MUNICIPALITIES.