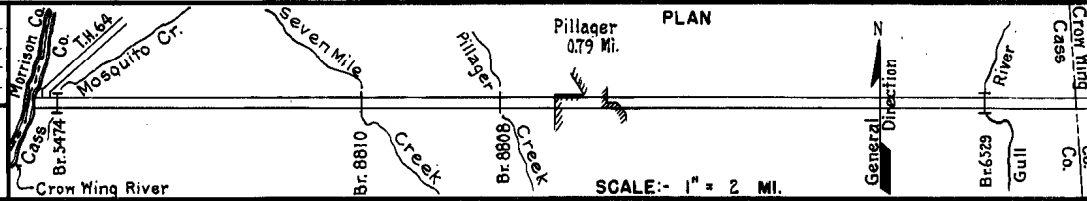


PREPARED BY
HIGHWAY PLANNING SURVEY
IN COOPERATION WITH
U. S. PUBLIC ROADS ADMINISTRATION

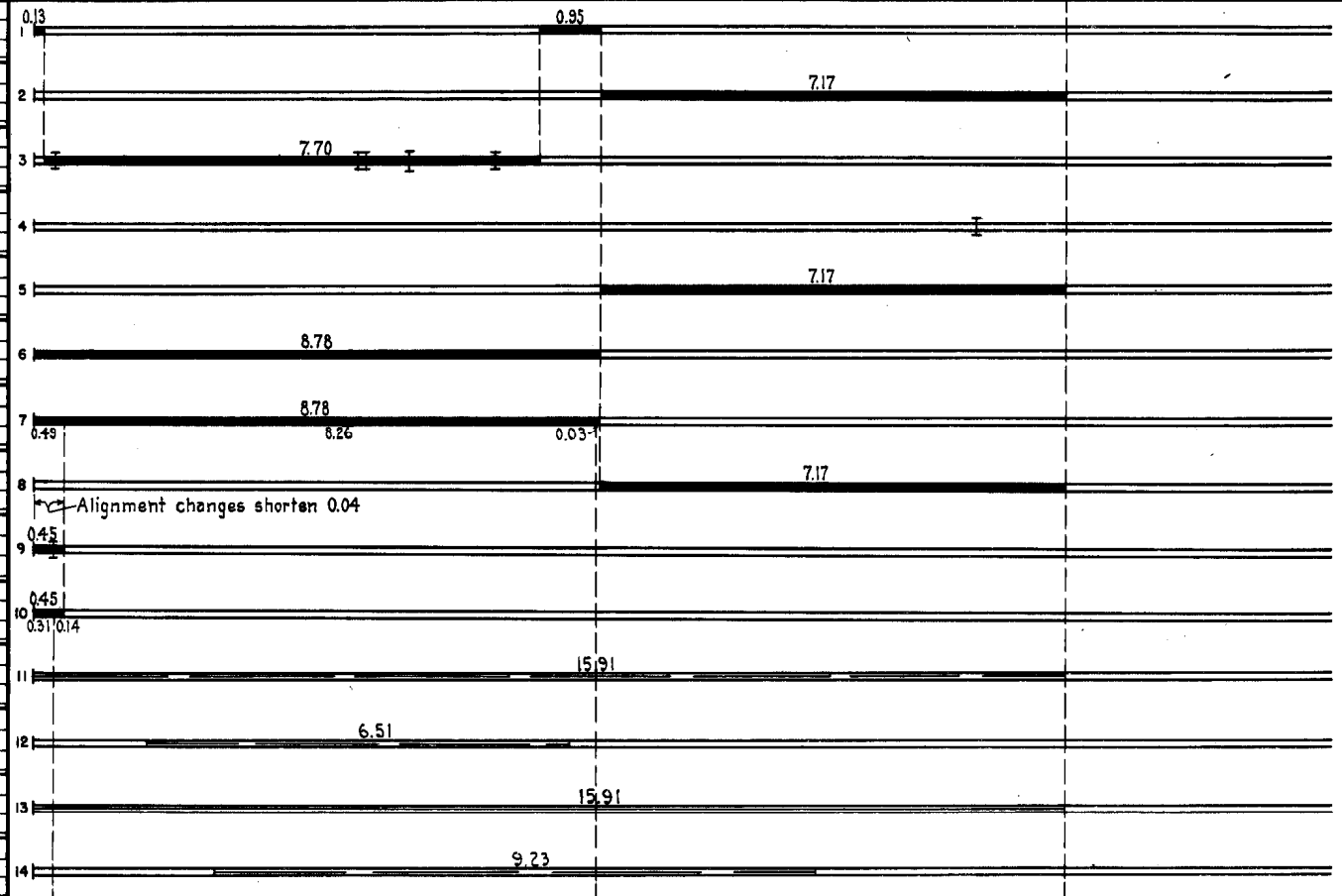
STATE OF MINNESOTA
DEPARTMENT OF HIGHWAYS
ROAD LIFE STUDIES
CONSTRUCTION PROJECT LOG RECORD

CONTROL SECTION 1115
TRUNK HIGHWAY 210
COUNTY Cass
DISTRICT 3A

LIMITS: North End of Bridge (Crow Wing River) - East Co. Line



YEAR BUILT	PROJECT N°	DESCRIPTION			CODE N°
		TYPE	WIDTH	THICKNESS	
		Earth	20-30		No Record of Constr.
1920	210-2-9	Grading	24'		Co. Job N° 2001.
1921	210-2-14	Grading Br.* 3368, 3437 8450 & 8451 & 8587	24' 20-21' 22'		Co. Job N° 1901. 45' Br., 23' B.S. 2-10 Slab Spans & 8' CS
1922	210-2-23	Br. N° 3529	19'		180' H.T.
1922	210-2-25	Gravel	24'	2 3/4"	1300 C.Y./ Mile.
1926	210-2-36	Gravel	24'	2 1/2"	1200 C.Y./ Mile.
	(1)				
1930	210-2-36	Oil Tr. Gravel	24-26'	1 1/2"	10498 Gal./ Mile. Maint. Dept.
	(1)				
1930	210-2-25	Tar Tr. Gravel	24'	1 1/2"	10498 Gal./ Mile. Maint. Dept.
1935	210-2-36-1B	Grading Br. N° 5474	32' 30'		45' B.S.
	(1)				
1935	210-2-36-1B	Oil Tr. Gravel	24'	1 1/2"	Maint. Dept.
M	A. F. E. 6	Spot Treat. Bit. Surf. Repair	24'		SG 3, 1098 Gal./ Mi. Grav. 57 C.Y./ Mi. Maint. Dept.
M	A. F. E. 4	Spot Treat. Bit. Surf. Repair	24'		RT 6, 804 Gal./ Mi. Grav. 76 C.Y./ Mi. Maint. Dept.
M	A. F. E. 5	Bit. Seal Coat	22'		RT 8, 2007 Gal./ Mi. Aq. 57 C.Y./ Mi. Maint. Dept.
M	A. F. E. 4	Spot Treat. Bit. Surf. Repair	22'		MC 2 & RT 6, 103 G./ Mi. Aq. 10 C.Y./ Mi. Maint. Dept.



YEARS FROM	TO	TOTAL MILES	UNINCORPORATED		INCORPORATED		RURAL		URBAN	
			RDWY. MI.	BR. MI.	RDWY. MI.	BR. MI.	RDWY. MI.	BR. MI.	RDWY. MI.	BR. MI.
1921	1934	15.95	15.30	0.02	0.63	0.00	15.93	0.02	0.00	0.00
1935	1951	15.91	15.26	0.02	0.63	0.00	15.89	0.02	0.00	0.00
1952	1962	15.85	12.15	0.02	0.68	0.00	15.83	0.02	0.00	0.00
1953	1962	15.50	14.98	0.03	0.49	0.00	15.47	0.03	0.00	0.00
1963		15.50	14.68	0.03	0.79	0.00	15.47	0.03	0.00	0.00

REMARKS: Layout is to sale as of 1935

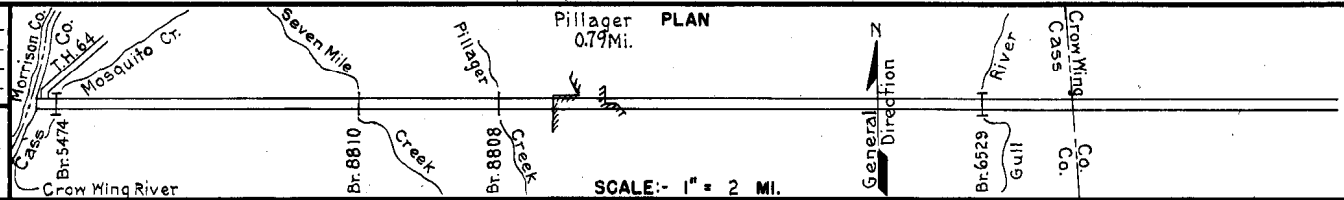
(1) This work not done under these project numbers but lies within the limits of these projects

PREPARED BY
HIGHWAY PLANNING SURVEY
IN COOPERATION WITH
U.S. PUBLIC ROADS ADMINISTRATION

STATE OF MINNESOTA
DEPARTMENT OF HIGHWAYS
ROAD LIFE STUDIES
CONSTRUCTION PROJECT LOG RECORD

CONTROL SECTION 1115
TRUNK HIGHWAY 210
COUNTY Cass
DISTRICT 3A

LIMITS: N. End of Bridge (Crow Wing River) - E. Co. Line



YEAR BUILT	PROJECT N ^o	DESCRIPTION			CODE N ^o		
		TYPE	WIDTH	THICKNESS			
M 1944	A.F.E. 4	Spot Treat. Bit. Surf. Repair	24'		1	15.91	
M 1945	A.F.E. 4	Spot Treat. Bit. Surf. Repair	24'		2	13.45	
M 1946	A.F.E. 4	Spot Treat. Bit. Surf. Repair	24'		3	15.91 (Net 7.37)	
M 1947	A.F.E. 4	Spot Treat. Bit. Surf. Repair & Fog Seal	24'		4	7.17 (Net Repair 1.96) (Net Fog Seal 2.78)	
M 1948	A.F.E. 4	Spot Treat. Bit. Surf. Repair	24'		5	15.91 (Net 1.13)	
M 1949	A.F.E. 4	Bit. Fog Seal	24'		6	15.91	
M 1952	A.F.E. 4	Spot Treat. Bit. Surf. Repair	24'		7	14.93 (Net 3.13)	
C 1952	1115-05 (1) 1115-06	Grading Stab. Gravel Br. 6529	42' 26' 30'	3"	8	7.14	Shortens 0.06
C 1953	1115-04	Grading & Select Mat'l Salv. Bit. & Stab. Grav.	42' 30'	6" 2"-2"	9	8.06	Shortens 0.35
C 1953	A.F.E. 832	Bit. Surfacing Mixed Bit. (Mixed Prime)	26'	1 1/2"	10	8.06	
C 1953	1115-07 1115-08	Concrete Bit. Stab. Shoulders	22' 16'	9 7/8" 3"	11	7.13	
C 1954	1115-09	Salv. Bit. Base Concrete	22'	2" 9 7/8"	12	8.37	
M 1954	A.F.E. 823	Penetration Prime	16'		13		
M 1955	A.F.E. 820	Shoulder Repair (Penetration Prime)	16'		14		

YEARS		TOTAL MILES	UNINCORPORATED		INCORPORATED		RURAL		URBAN	
FROM	TO		RDWY. MI.	BR. MI.	RDWY. MI.	BR. MI.	RDWY. MI.	BR. MI.	RDWY. MI.	BR. MI.

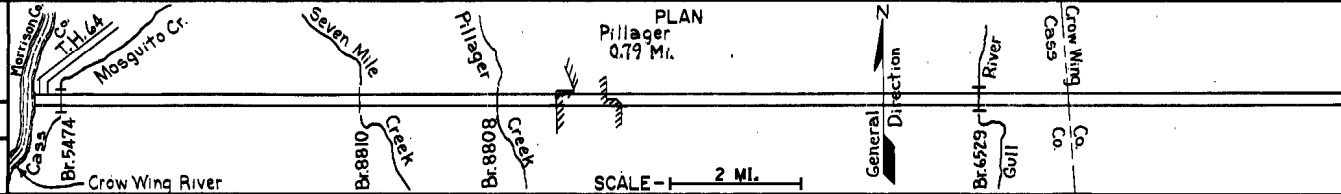
REMARKS: See Sheet No. 1
(1) Contract not final but work substantially complete.

PREPARED BY
TRAFFIC AND PLANNING DIVISION
IN COOPERATION WITH
U.S. DEPARTMENT OF COMMERCE
BUREAU OF PUBLIC ROADS

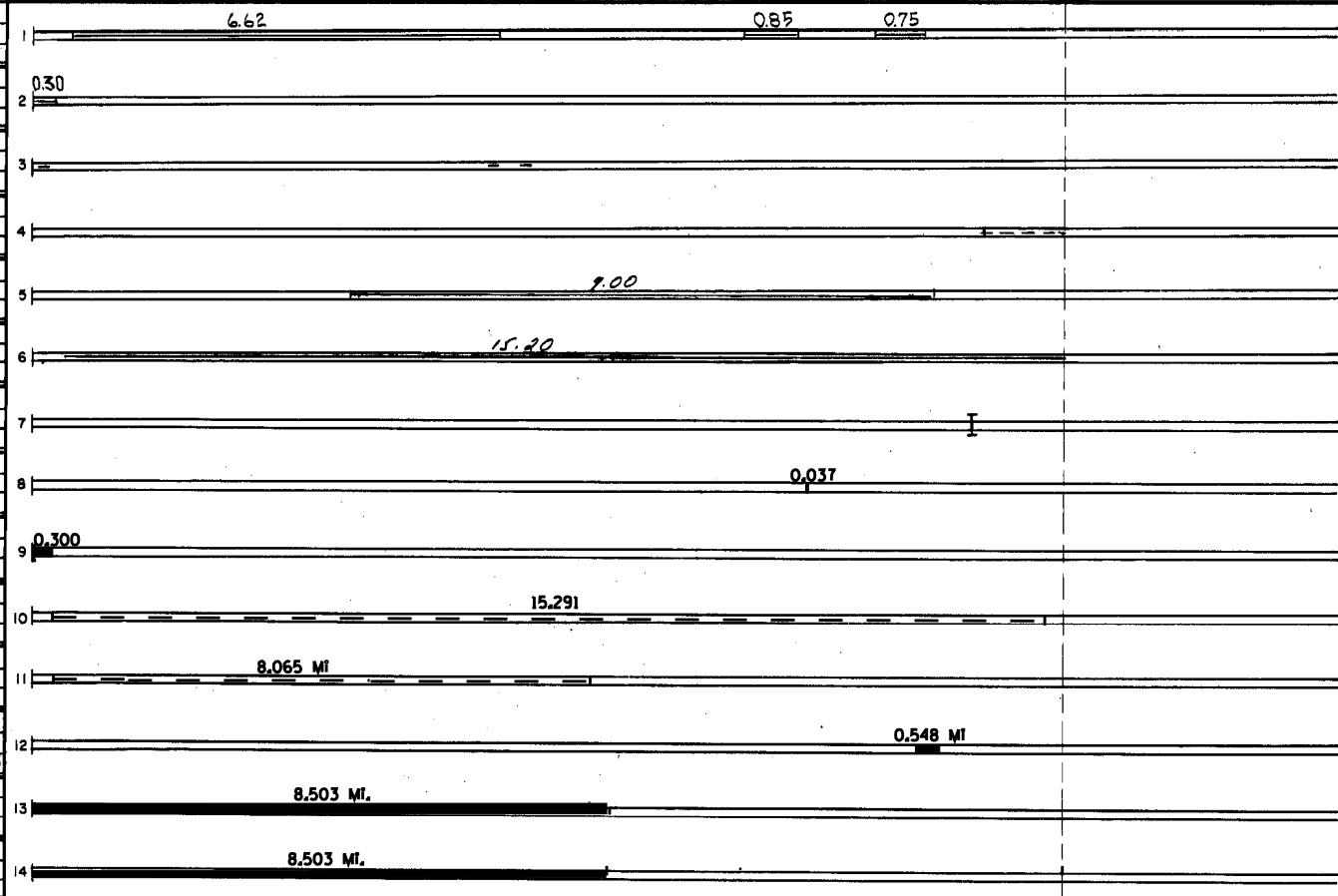
STATE OF MINNESOTA
DEPARTMENT OF HIGHWAYS
ROAD LIFE STUDIES
CONSTRUCTION PROJECT LOG RECORD

CONTROL SECTION 1115
TRUNK HIGHWAY 210
COUNTY Cass
DISTRICT 5A

LIMITS: North End of Bridge (Crow Wing River) - E. Co. Line
Ref. Pt. 100+00.895 - 116+00.392



YEAR BUILT	PROJECT NO	DESCRIPTION			
		TYPE	WIDTH	THICKNESS	REMARKS
C	1960	Stabilized Bituminous Shoulders			By Maint. Dist.
M	1971	SF Joint Seal			
C	1973	1115-11 Right Turn Lanes			
M	1973	SF Joint Seal			4,350 lbs Sealant
M	1974	SF Joint Seal			26,100 lbs.
C	1980	1115-13 Bit. Shoulders Two Lanes Bit. Shouldering Frontage Rd. Resurfacing	8'	1 1/2"	
C	1982	1115-6529 Widening Br. 6529			
M	1986	SF Bit. Overlay Bit. Shouldering	22'	1"	Spec. 2341
C	1990	1115-17 Grading Bit. Surfacing			Spec. 2341
M	1991	M4502 Conc. Repair			
M	1994	M94076 Concrete Rehab.			
S	2002	1115-20 Grading Bit Surfacing	24'	4 1/2"	Spec. 2350 Type MV 3
S	2002	1115-18 Bit. Overlay Aggregate Base	26'	4.5" 6' 1.5"	Spec. 2360 Class 6
C	2005	1115-21 Bituminous Overlay Mill & Grd shldr	24'	4"	spec. 2360



YEARS FROM TO		TOTAL MILES	UNINCORPORATED		INCORPORATED		RURAL		URBAN	
			RDWY. MI.	BR. MI.	RDWY. MI.	BR. MI.	RDWY. MI.	BR. MI.	RDWY. MI.	BR. MI.

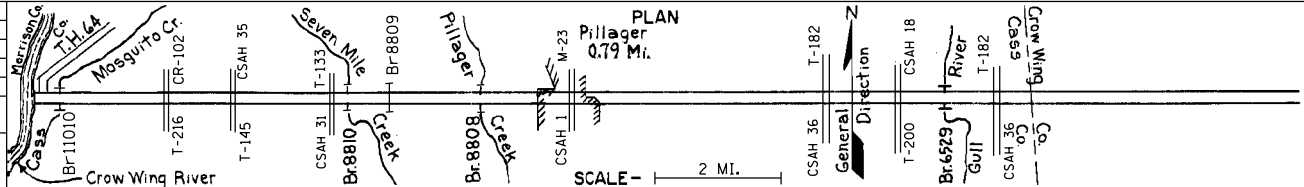
REMARKS: See Sheet No. 1

PREPARED BY
BUREAU OF POLICY & PLANNING
IN COOPERATION WITH
U. S. DEPARTMENT OF TRANSPORTATION - FEDERAL HIGHWAY ADMINISTRATION

STATE OF MINNESOTA
DEPARTMENT OF TRANSPORTATION
CONSTRUCTION PROJECT LOG RECORD

CONTROL SECTION 1115
TRUNK HIGHWAY 210
COUNTY Cass
DISTRICT 3

LIMITS: North End of Bridge (Crow Wing River) - E. County Line
Ref. Pt. 100+00.895 - 116+00.427



YEAR BUILT	PROJECT No	DESCRIPTION			REMARKS
		TYPE	WIDTH	THICKNESS	
D					
2007	8823-101	Agg. Seal			FA-2
S					
2012	8823-261	Micro Surfacing Fog Seal Shoulder	24' 8'		Spec 2356
		Minor Conc. Repair	22'		
2013	1115-27	Concrete Grinding	22'		

1	7.19 Mi.	
2	0.920 Mi.	
3	7.204 Mi.	
4		
5		
6		
7		
8		
9		
10		
11		
12		
13		
14		

YEARS FROM TO		TOTAL MILES	UNINCORPORATED RDWY. MI. BR. MI.		INCORPORATED RDWY. MI. BR. MI.		RURAL RDWY. MI. BR. MI.		URBAN RDWY. MI. BR. MI.	

REMARKS: