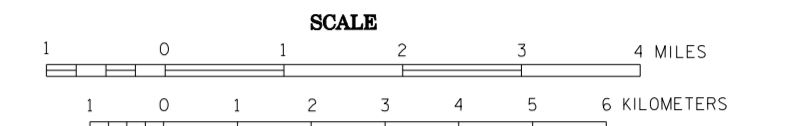


2009 TH VOLUMES GENERAL HIGHWAY MAP CASS COUNTY MINNESOTA

PREPARED BY THE
MINNESOTA DEPARTMENT OF TRANSPORTATION
OFFICE OF TRANSPORTATION DATA & ANALYSIS
IN COOPERATION WITH
U.S. DEPARTMENT OF TRANSPORTATION
FEDERAL HIGHWAY ADMINISTRATION



2009
BASIC DATA - 1977*

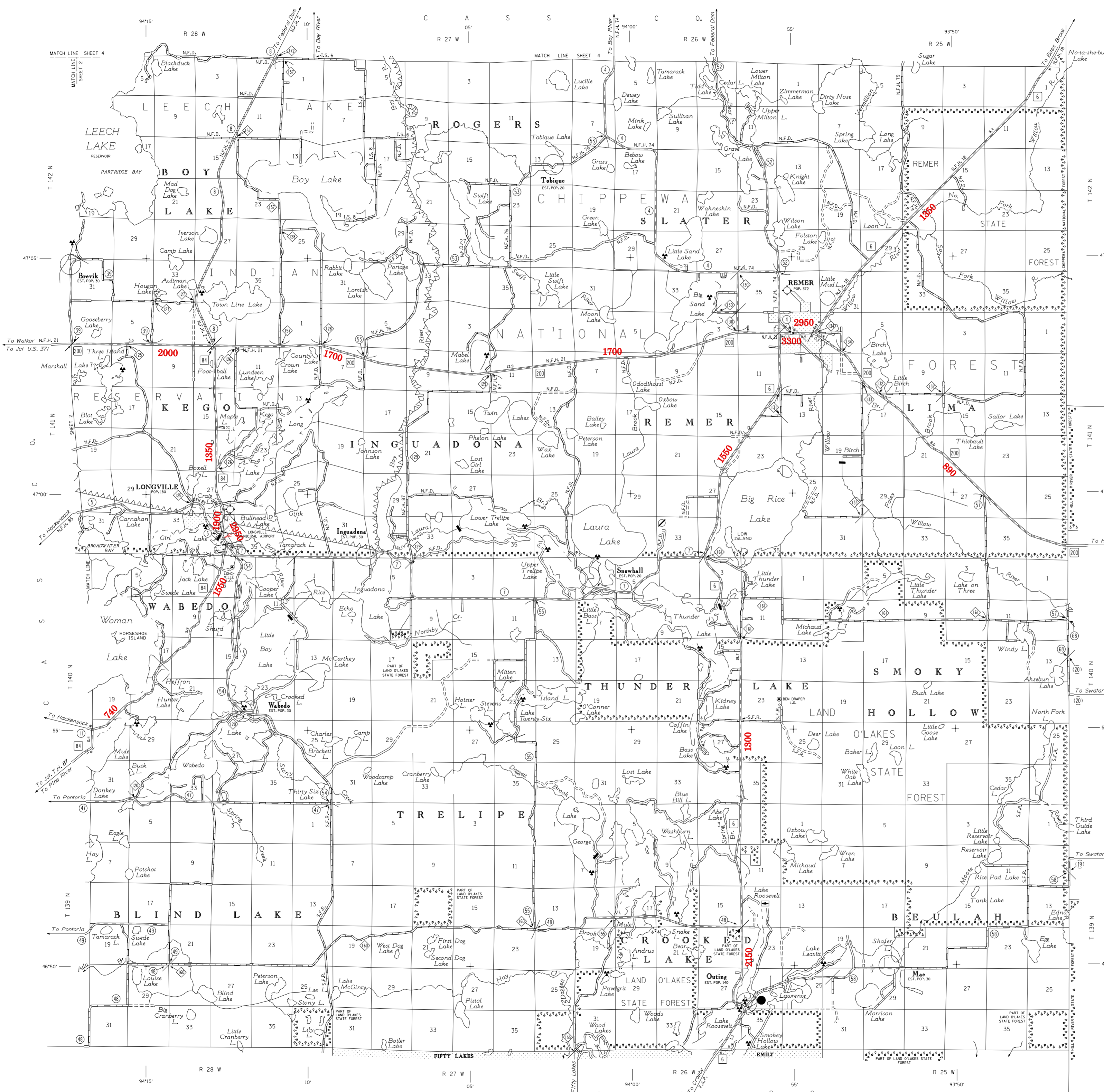
Projections
Minnesota Coordinate System
Central Zone
Lambert Conformal Conic

North American Datum
of 1983



LEGEND

ROAD AND ROADWAY FEATURES	NAVIGATION
PROJECTED ROAD	BASIS LINES ON NATURAL FEATURES
PRIMITIVE ROAD	SHIP LINES ON LAKE LINES
UNIMPROVED ROAD	SHOALS, PIER OR LANDING
GRAVEL AND GRAVEL ROAD	UNAVOIDABLE STREAM
SOIL SURFACE ROAD	LANDMARK LIGHT BEACON
GRAVEL OR STONE ROAD	LIGHTHOUSE
BITUMINOUS ROAD	
PAVED ROAD	
ROAD UNDER CONSTRUCTION	
ROADS UNINCORPORATED CONTACTS	
BOUNDARIES OF LOCAL ROAD NOT PAID WITH MUNICIPALITIES AND PROVINCE ROADS	
POINTS BETWEEN WHICH DISTANCES ARE MEASURED INDICATED BY	
GRADE SEPARATION	
FULL TRAFFIC INTERCHANGE	
PARTIAL TRAFFIC INTERCHANGES INDICATING TRAFFIC MOVEMENT	
ROAD SYSTEM DESIGNATIONS	
INTERSTATE TRUNK HIGHWAY	
U.S. NUMBERED FROM HIGHWAY	
STATE NUMBERED FROM HIGHWAY	
COUNTY STATE AID HIGHWAY	
COUNTY STATE AID IN ADJUTING COUNTY	
TERMINATION OF DESIGNATED ROUTE	
INTERSTATE EXIT	
GREAT RIVER ROAD	
FEDERAL AID INTERSTATE SYSTEM	
NATIONAL FOREST SYSTEM	
NATIONAL FOREST ROAD	
INDIAN SERVICE ROAD	
STATE STREET ROAD	
STATE PARK ROAD	
RAILROADS	
RAILROAD ANY NUMBER OF TRACKS BY A SINGLE OPERATING COMPANY OR BY TRACKS OF ANOTHER CARRIED UNDER THROUGH RIGHTS	
RAILROADS IN ADJUTATION TRUCK OR MORE TRACKS OR SEPARATELY OPERATED COMPANIES ON ADJUTANT RIGHTS OF WAY	
RAILROAD STATION	
GRADE CROSSING	
INDUSTRIAL HOUSING RELATIONS	
OVERPASS HIGHWAY ABOVE	
AIRWAYS	
MILITARY FIELD	
COMMERCIAL OR MUNICIPAL FIELD	
COMPLETE FACILITIES	
LIMITED FACILITIES	
LANDING AREA OR STRIP	
SEAPLANE BASE	
ARMY LIGHT BEACON/GENERAL	
RADIO WAVE STATION	
STRUCTURES	
General Symbols (over 20 spots)	
HOBBY BRIDGE	
SMALL BRIDGE (CLOSELY SPACED)	
SHAMBRINE	
General Symbols (over 20 spots)	
GENERAL	
SHAMBRINE	
ARCH	
TRUSS	
RECREATION BRIDGE	
DAM WITH ROAD (LARGE SCALE)	
DAM WITH ROAD (SMALL SCALE)	
DAM WITHOUT ROAD (LARGE SCALE)	
DAM WITHOUT ROAD (SMALL SCALE)	
LEVEL OR ONE	
LEVEL OR ONE WITH ROAD	
WOOD STRUCTURES 10 TO 50' HIGH	
CONCRETE FORD OR BIP	
FORD - ROAD ESTABLISHED	
BOUNDARIES	
NATIONAL OR STATE	
CITY	
CONGRESSIONAL TOWNSHIP (U.S. LAND)	
CORPORATE LINE	
SECTION LINE	
CONGRESSIONAL AREA	
NATIONAL OR STATE PARK	
NATIONAL OR STATE FOREST	
INDIAN RESERVATION	
GAME REFUGE	
INDIAN RESERVATION AREA (STATUS OF THE SAME COUNTY)	
WATER LINE BETWEEN ADJOINING SHEETS OF THE SAME COUNTY	
DRAINAGE	
INTERMITTENT STREAM	
WIDE STREAM	
HEADWATER STATION	
WATER OR SWAMP LAND (STATUS OF THE SAME COUNTY)	
DRAINAGE SECTION	
LAKE OR POND	



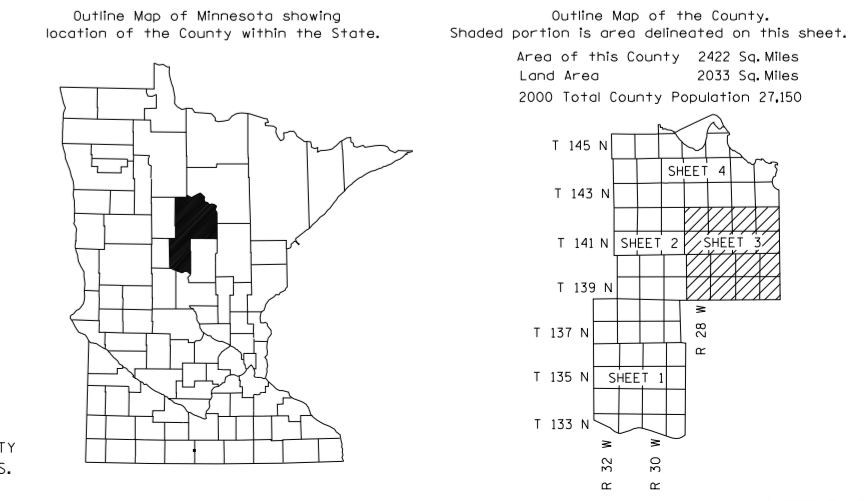
VOLUMES PREPARED BY
THE OFFICE OF
TRANSPORTATION DATA & ANALYSIS

NUMERALS INDICATE AVERAGE DAILY
TRAFFIC VOLUMES ON DESIGNATED ROADS.

TRUNK HIGHWAY ROUTES ARE 2009 A.A.D.T. VOLUMES

FOR DESIGNATED ROADS :
/ = SEGMENT ENDPOINT FOR ALL
ROADS INTERSECTED BY HATCH
(= SEGMENT ENDPOINT ONLY FOR
ROAD SEPARATED FROM INTERSECTING
ROAD BY ARC

**TRAFFIC VOLUMES ARE SUBJECT TO VARIABILITY AND CONSTRUCTION EFFECTS
FOR MORE INFO VISIT: <http://www.dot.state.mn.us/traffic/data/html/aadt.html>**



*NOTE: ALL FEATURES EXCEPT TOWNSHIP ROADS AND
CULTURE ARE CURRENT AS OF JANUARY 1, 2009.
NOTE: FOR DETAIL OF COUNTY STATE AID HIGHWAYS AND COUNTY
ROADS IN INCORPORATED PLACES, SEE MAPS OF MUNICIPALITIES.