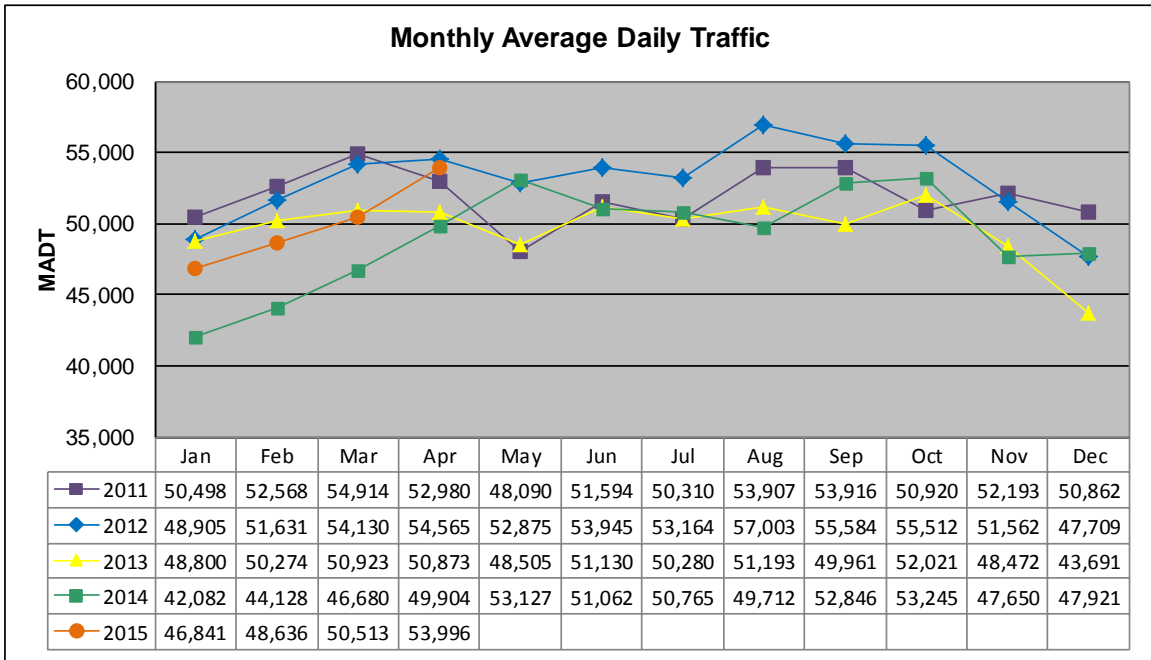


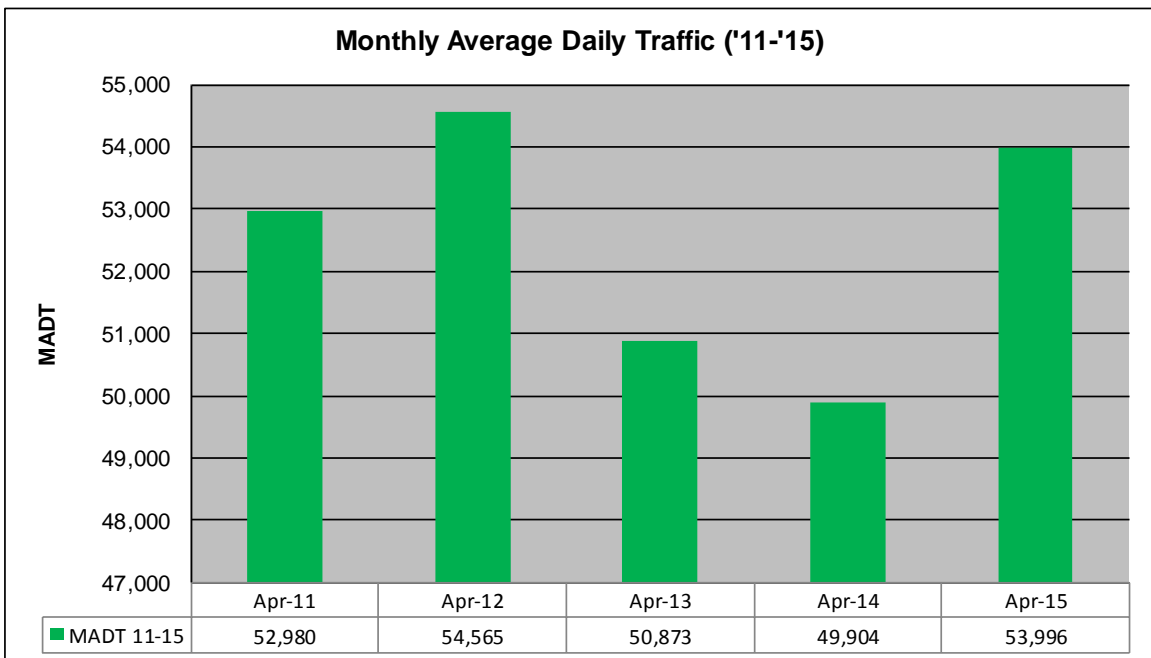
MONTHLY REPORT, STATION NO. 40 (WIM)

APRIL 2015

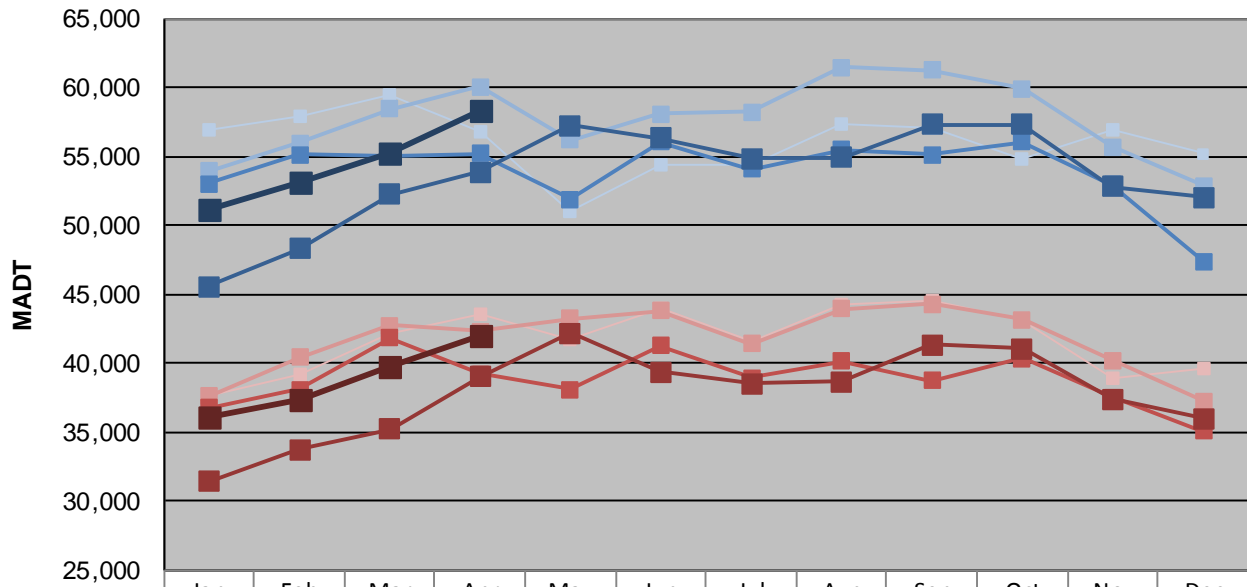
Station Measurement: VOLUME/SPEED/CLASS/WEIGHT		
Route: TH 52	Route Direction: N/S	Lanes: 4
County: Dakota		Closest City: West St Paul
Functional Class: Urban Principal Arterial - Other Freeways or Expressways		
Location: .5 MI N OF CSAH14 (SOUTHVIEW BLVD) IN W ST PAUL		
Ref Post: 126+00.677	True Mile: 127.015	Sequence No. 11537
Volume: 1,619,888		MADT: 53,996
Weekday (M-F) MADT: 58,334		Weekend (Sa-Su) MADT: 41,938



Note: Decrease in traffic April 2011 to date due to major construction on TH 52



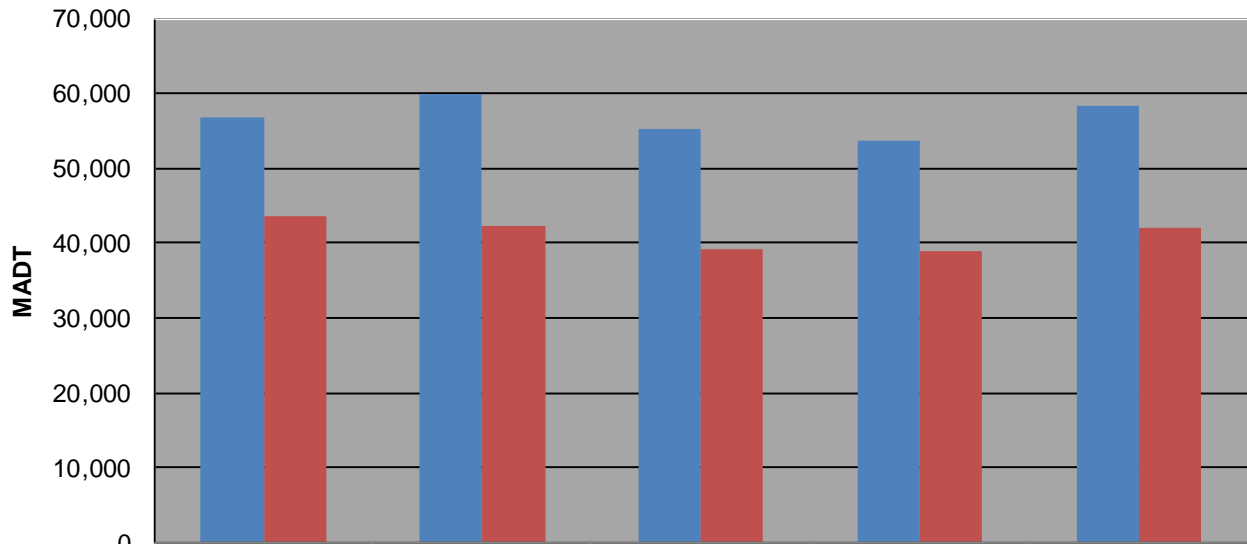
Weekday (WD)/Weekend (WE) Monthly Average Daily Traffic



	Jan	Feb	Mar	Apr	May	Jun	Jul	Aug	Sep	Oct	Nov	Dec
'11 WD	56,858	57,938	59,436	56,790	50,968	54,350	54,400	57,392	57,034	54,752	56,872	55,172
'11 WE	37,678	39,144	42,138	43,548	41,696	43,992	41,528	44,186	44,586	43,060	38,972	39,634
'12 WD	53,960	55,954	58,452	60,020	56,150	58,072	58,194	61,432	61,244	59,904	55,686	52,898
'12 WE	37,616	40,422	42,728	42,346	43,200	43,830	41,416	43,938	44,264	43,172	40,210	37,250
'13 WD	53,038	55,136	55,024	55,224	51,922	56,058	54,092	55,490	55,102	56,064	52,958	47,412
'13 WE	36,768	38,118	41,850	39,254	38,080	41,270	38,920	40,112	38,748	40,362	37,526	35,088
'14 WD	45,576	48,298	52,216	53,836	57,260	56,342	54,852	54,944	57,300	57,324	52,784	52,062
'14 WE	31,400	33,706	35,242	39,026	42,190	39,368	38,484	38,654	41,304	41,086	37,382	35,980
'15 WD	51,080	53,176	55,280	58,334								
'15 WE	36,142	37,288	39,764	41,938								

Note: 'Weekday' defined as Monday-Friday, 'Weekend' defined as Saturday-Sunday

Weekday/Weekend Monthly Average Daily Traffic ('11-'15)



	Apr-11	Apr-12	Apr-13	Apr-14	Apr-15
Weekday	56,790	60,020	55,224	53,836	58,334
Weekend	43,548	42,346	39,254	39,026	41,938