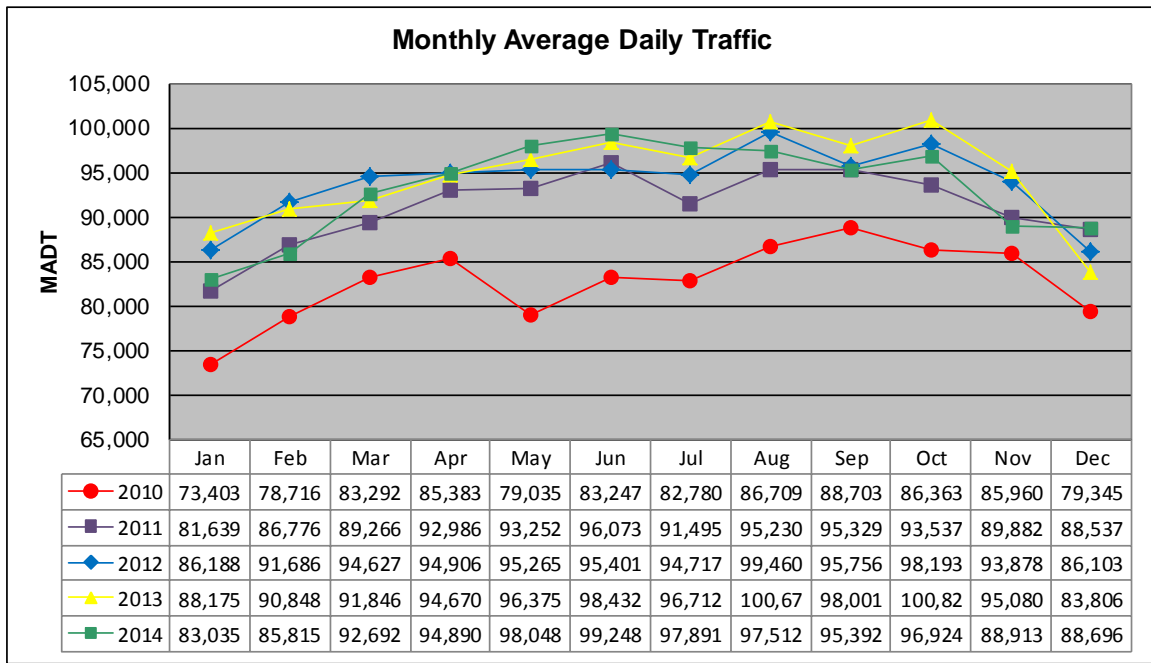


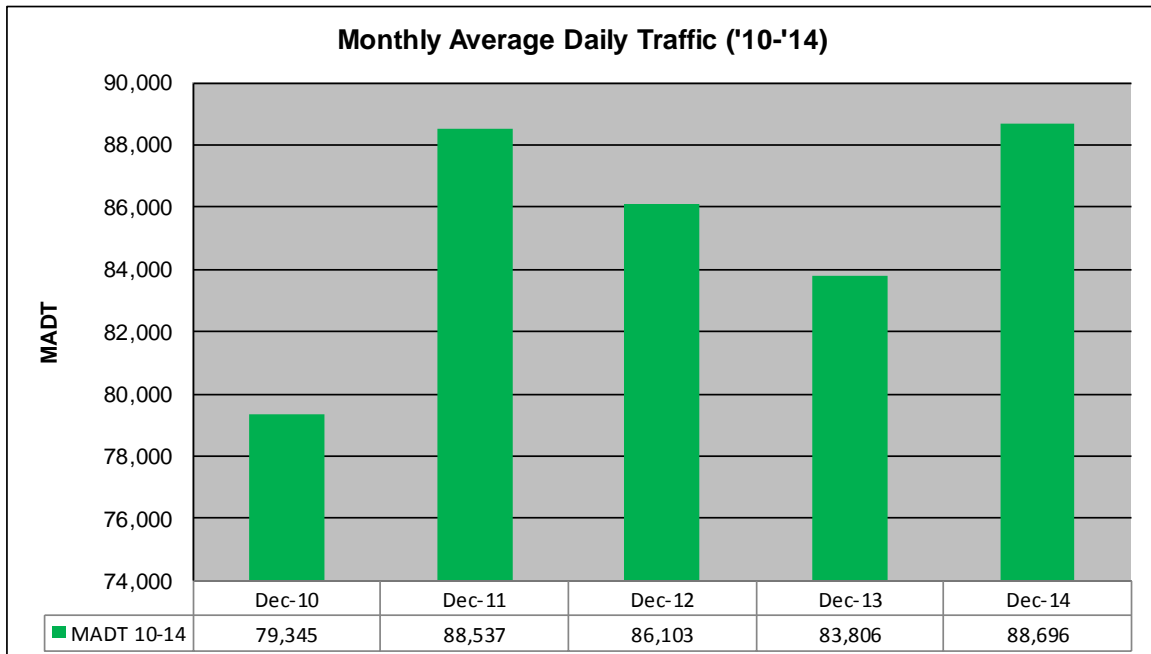
MONTHLY REPORT, STATION NO. 329 (ATR)

DECEMBER 2014

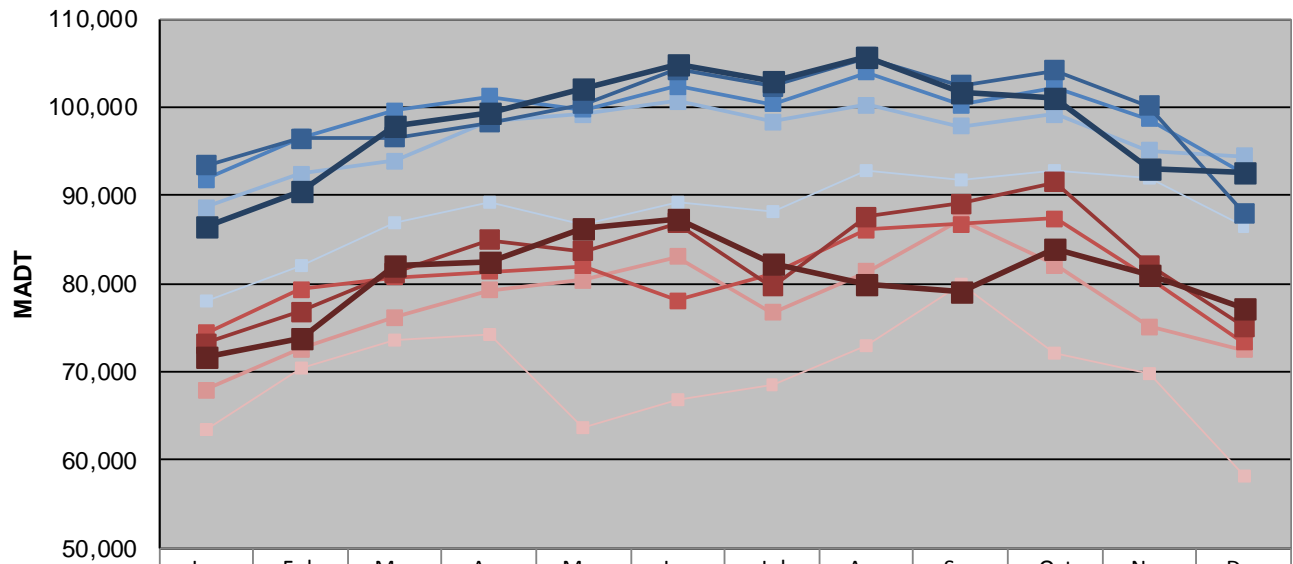
Station Measurement: VOLUME		
Route: I-35W	Route Direction: N/S	Lanes: 4
County: Hennepin		Closest City: Minneapolis
Functional Class: Urban Principal Arterial - Interstate		
Location: AT FRANKLIN AVE IN MINNEAPOLIS		
Ref Post: 016+00.680	True Mile: 16.713	Sequence No. 9851
Volume: 2,749,577		MADT: 88,696
Weekday (M-F) MADT: 92,598		Weekend (Sa-Su) MADT: 77,220



Note: Decrease in traffic 2008 due to I-35W bridge collapse and construction on TH 62... Although traffic increased from August 2008 to December 2010, volumes were lower than expected due to construction on I-35W and TH 62



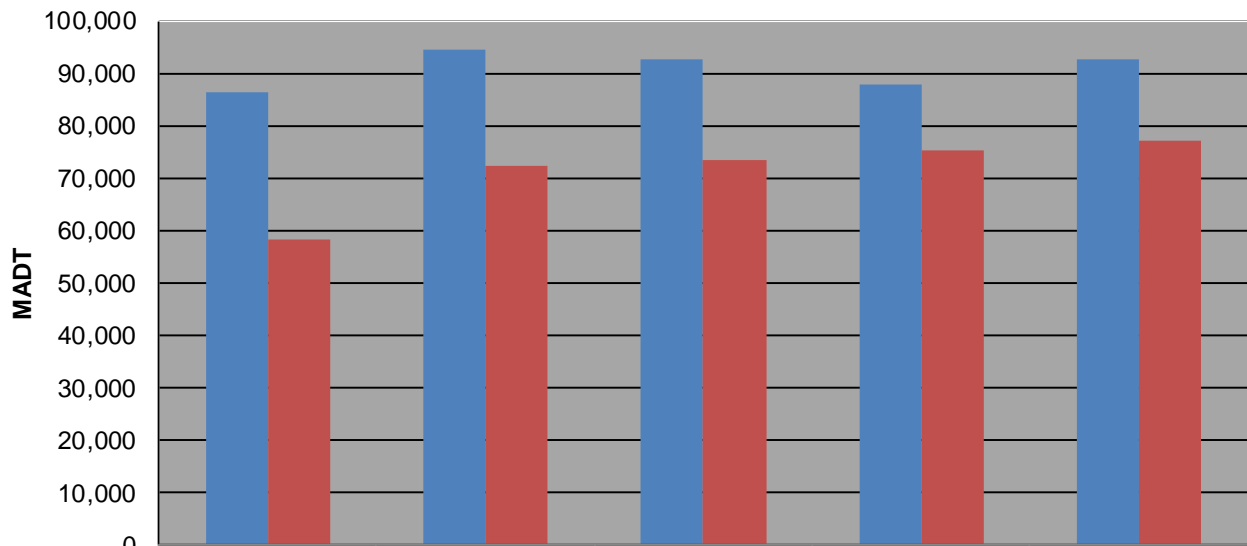
Weekday (WD)/Weekend (WE) Monthly Average Daily Traffic



	Jan	Feb	Mar	Apr	May	Jun	Jul	Aug	Sep	Oct	Nov	Dec
'10 WD	78,096	82,048	86,962	89,154	86,764	89,258	88,106	92,770	91,742	92,876	91,866	86,482
'10 WE	63,564	70,390	73,548	74,326	63,606	66,826	68,514	72,936	79,972	72,130	69,724	58,100
'11 WD	88,592	92,444	93,910	98,328	99,206	100,688	98,396	100,272	97,848	99,206	95,070	94,480
'11 WE	67,902	72,578	76,222	79,264	80,366	83,088	76,702	81,358	87,258	82,124	75,080	72,466
'12 WD	91,808	96,530	99,654	101,172	99,716	102,386	100,406	103,910	100,274	102,284	98,708	92,600
'12 WE	74,406	79,324	80,722	81,398	82,036	78,102	81,100	86,106	86,724	87,338	80,724	73,322
'13 WD	93,434	96,456	96,588	98,236	100,370	104,238	102,390	105,602	102,424	104,124	100,152	87,968
'13 WE	73,206	76,828	81,260	84,934	83,728	86,820	79,688	87,538	89,030	91,458	82,126	75,158
'14 WD	86,534	90,586	97,976	99,394	102,174	104,746	102,966	105,734	101,664	101,122	92,926	92,598
'14 WE	71,786	73,892	82,138	82,412	86,224	87,332	82,276	79,974	79,052	84,042	80,890	77,220

Note: 'Weekday' defined as Monday-Friday, 'Weekend' defined as Saturday-Sunday

Weekday/Weekend Monthly Average Daily Traffic ('10-'14)



	Dec-10	Dec-11	Dec-12	Dec-13	Dec-14
Weekday	86,482	94,480	92,600	87,968	92,598
Weekend	58,100	72,466	73,322	75,158	77,220