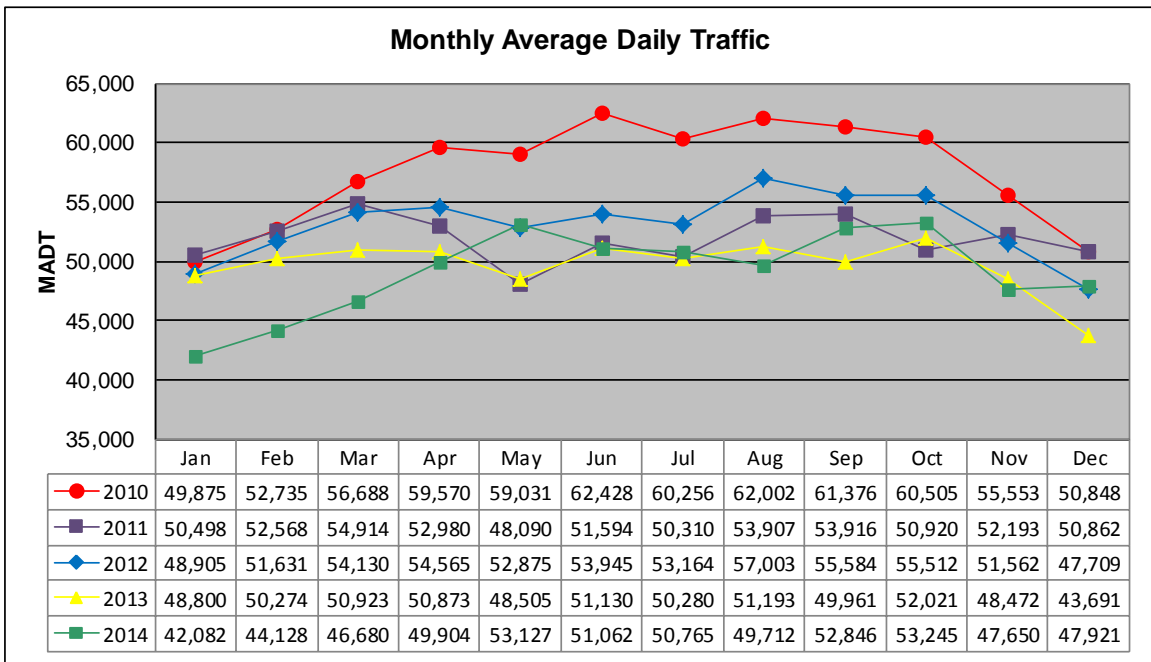


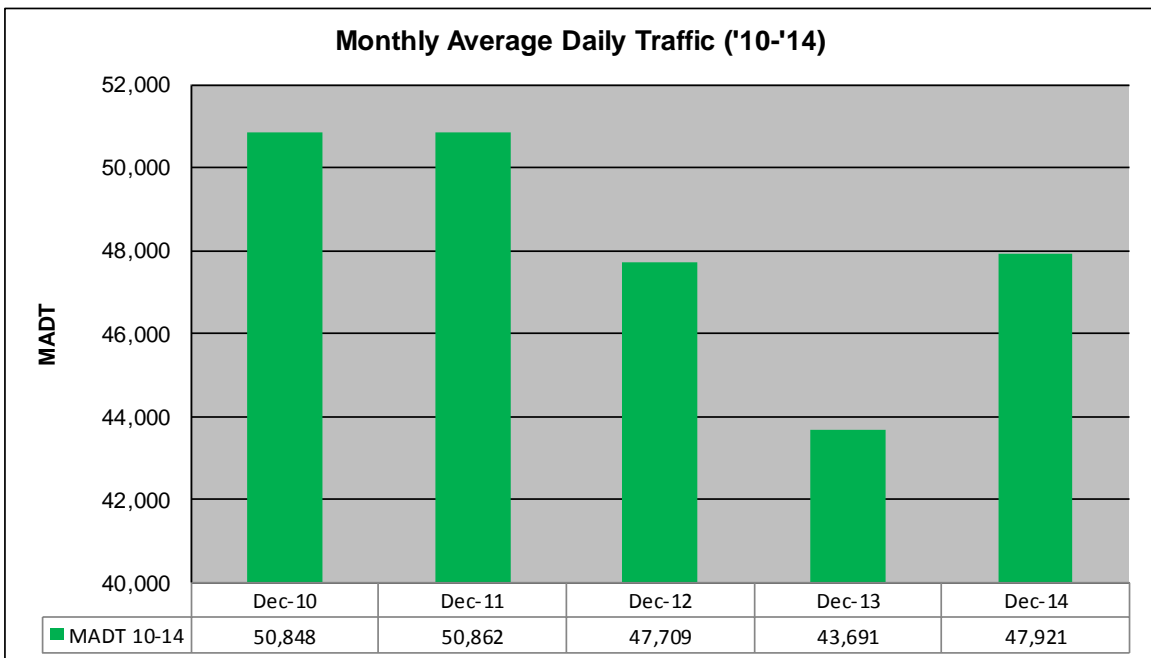
MONTHLY REPORT, STATION NO. 40 (WIM)

DECEMBER 2014

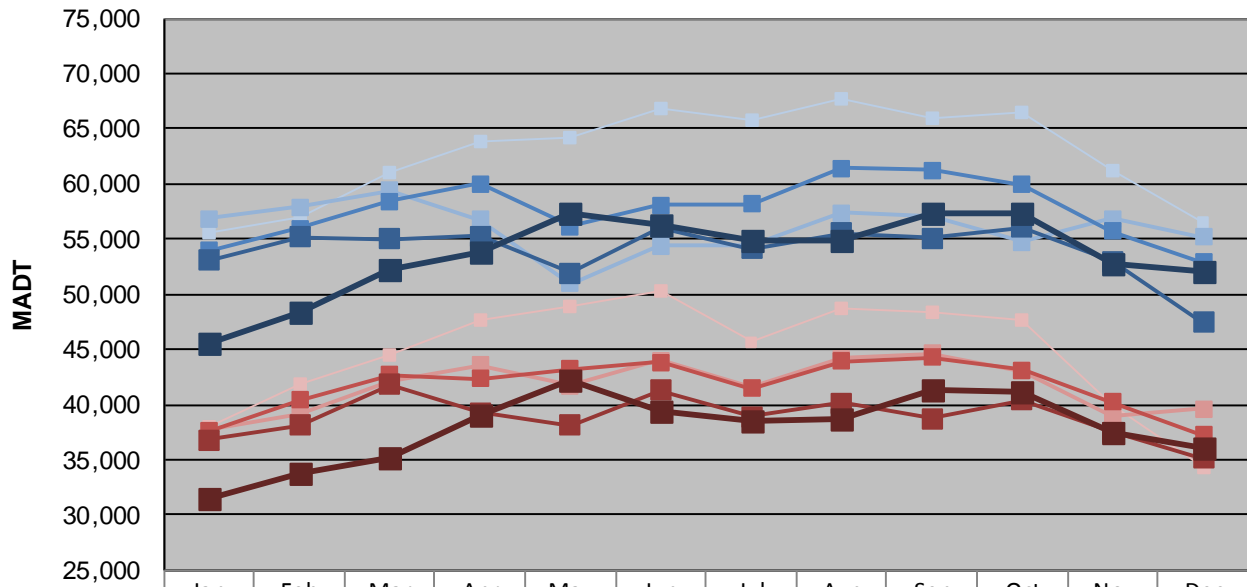
| | | |
|--|----------------------|-------------------------------------|
| Station Measurement: VOLUME/SPEED/CLASS/WEIGHT | | |
| Route: TH 52 | Route Direction: N/S | Lanes: 4 |
| County: Dakota | | Closest City: West St Paul |
| Functional Class: Urban Principal Arterial - Other Freeways or Expressways | | |
| Location: .5 MI N OF CSAH14 (SOUTHVIEW BLVD) IN W ST PAUL | | |
| Ref Post: 126+00.677 | True Mile: 127.015 | Sequence No. 11537 |
| Volume: 1,485,542 | | MADT: 47,921 |
| Weekday (M-F) MADT: 52,062 | | Weekend (Sa-Su) MADT: 35,980 |



Note: Decrease in traffic April 2011 to date due to major construction on TH 52



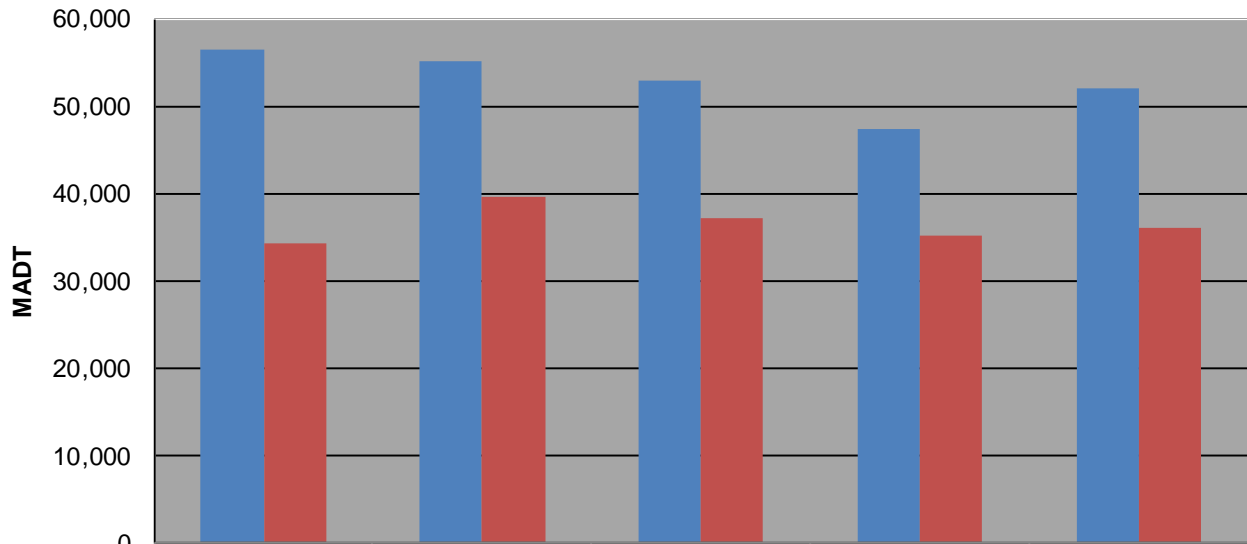
Weekday (WD)/Weekend (WE) Monthly Average Daily Traffic



| | Jan | Feb | Mar | Apr | May | Jun | Jul | Aug | Sep | Oct | Nov | Dec |
|--------|--------|--------|--------|--------|--------|--------|--------|--------|--------|--------|--------|--------|
| '10 WD | 55,630 | 57,056 | 61,046 | 63,806 | 64,158 | 66,876 | 65,838 | 67,688 | 65,906 | 66,408 | 61,276 | 56,464 |
| '10 WE | 37,926 | 41,936 | 44,538 | 47,584 | 48,824 | 50,216 | 45,688 | 48,744 | 48,416 | 47,744 | 39,832 | 34,368 |
| '11 WD | 56,858 | 57,938 | 59,436 | 56,790 | 50,968 | 54,350 | 54,400 | 57,392 | 57,034 | 54,752 | 56,872 | 55,172 |
| '11 WE | 37,678 | 39,144 | 42,138 | 43,548 | 41,696 | 43,992 | 41,528 | 44,186 | 44,586 | 43,060 | 38,972 | 39,634 |
| '12 WD | 53,960 | 55,954 | 58,452 | 60,020 | 56,150 | 58,072 | 58,194 | 61,432 | 61,244 | 59,904 | 55,686 | 52,898 |
| '12 WE | 37,616 | 40,422 | 42,728 | 42,346 | 43,200 | 43,830 | 41,416 | 43,938 | 44,264 | 43,172 | 40,210 | 37,250 |
| '13 WD | 53,038 | 55,136 | 55,024 | 55,224 | 51,922 | 56,058 | 54,092 | 55,490 | 55,102 | 56,064 | 52,958 | 47,412 |
| '13 WE | 36,768 | 38,118 | 41,850 | 39,254 | 38,080 | 41,270 | 38,920 | 40,112 | 38,748 | 40,362 | 37,526 | 35,088 |
| '14 WD | 45,576 | 48,298 | 52,216 | 53,836 | 57,260 | 56,342 | 54,852 | 54,944 | 57,300 | 57,324 | 52,784 | 52,062 |
| '14 WE | 31,400 | 33,706 | 35,242 | 39,026 | 42,190 | 39,368 | 38,484 | 38,654 | 41,304 | 41,086 | 37,382 | 35,980 |

Note: 'Weekday' defined as Monday-Friday, 'Weekend' defined as Saturday-Sunday

Weekday/Weekend Monthly Average Daily Traffic ('10-'14)



| | Dec-10 | Dec-11 | Dec-12 | Dec-13 | Dec-14 |
|---------|--------|--------|--------|--------|--------|
| Weekday | 56,464 | 55,172 | 52,898 | 47,412 | 52,062 |
| Weekend | 34,368 | 39,634 | 37,250 | 35,088 | 35,980 |