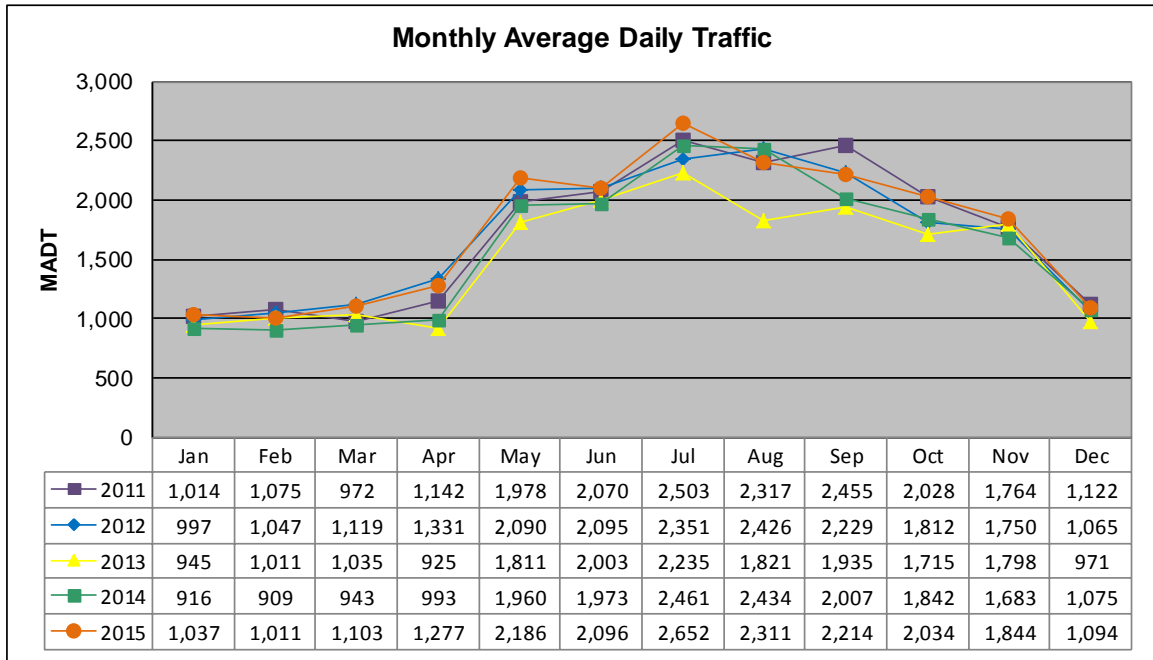


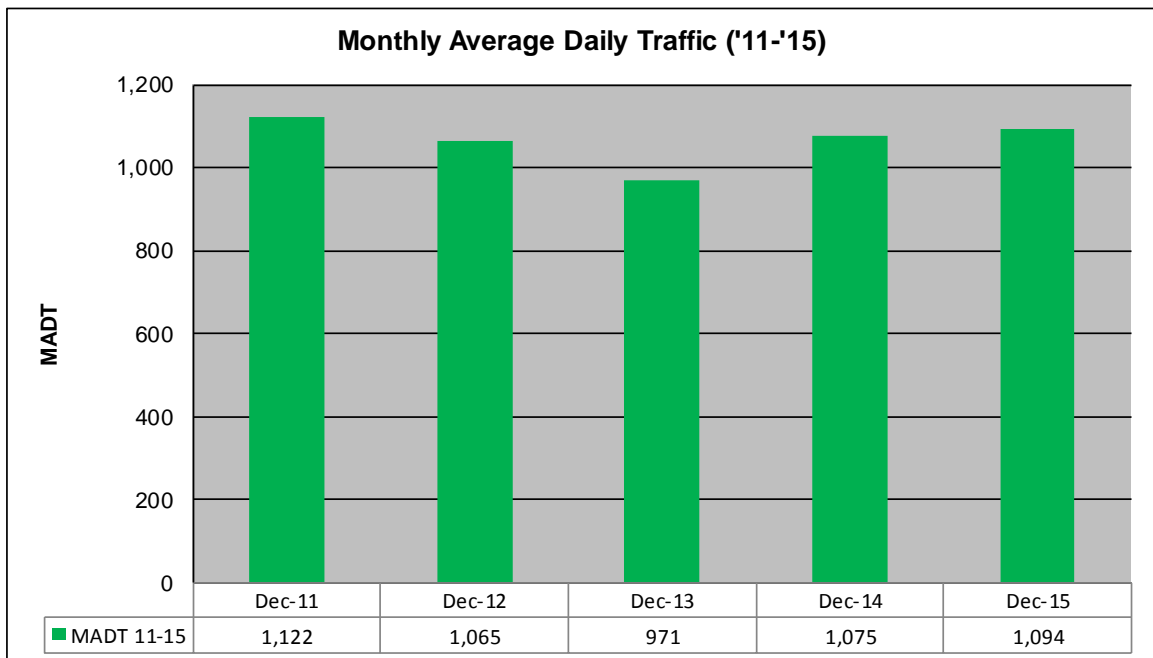
MONTHLY REPORT, STATION NO. 222 (ATR)

DECEMBER 2015

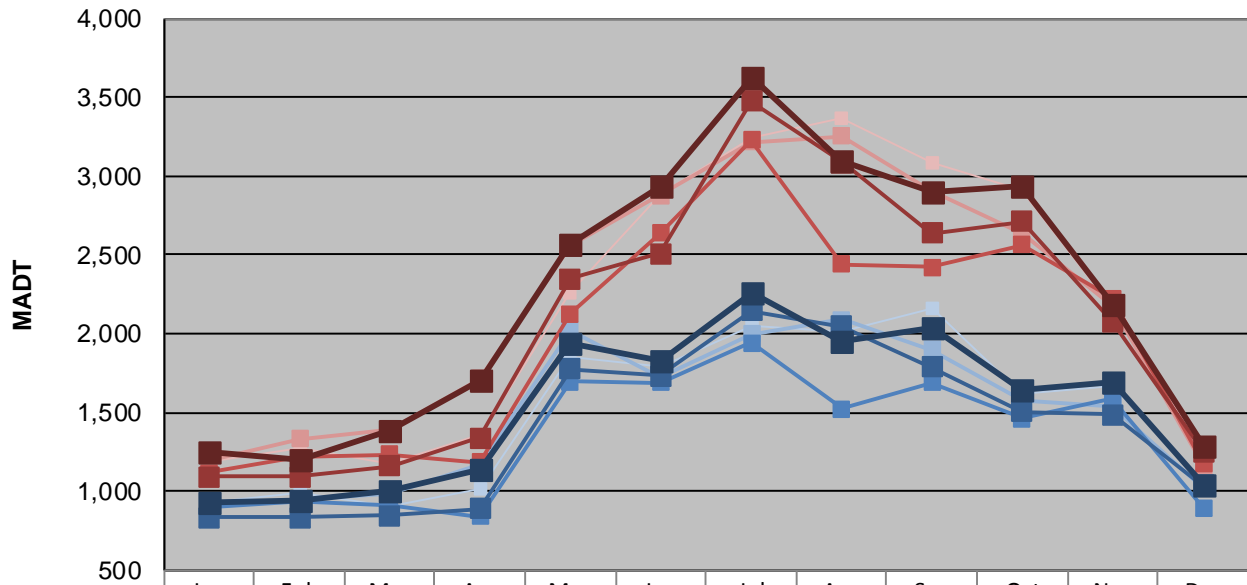
Station Measurement: VOLUME/SPEED		
Route: TH 65	Route Direction: N/S	Lanes: 2
County: Aitkin	Closest City: McGrath	
Functional Class: Rural Minor Arterial		
Location: .6 MI N OF CSAH2, N OF MCGRATH		
Ref Post: 097+00.725	True Mile: 100.432	Sequence No. 6767
Volume: 33,916		MADT: 1,094
Weekday (M-F) MADT: 1,042		Weekend (Sa-Su) MADT: 1,282



Note: Decrease in traffic August 2013 due to construction on TH 65



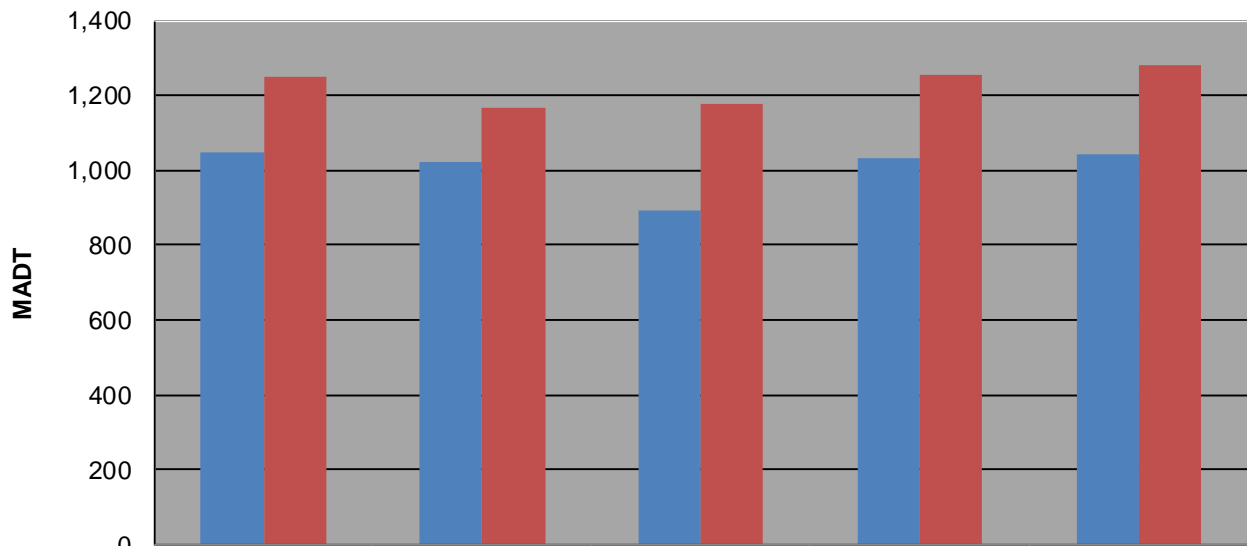
Weekday (WD)/Weekend (WE) Monthly Average Daily Traffic



	Jan	Feb	Mar	Apr	May	Jun	Jul	Aug	Sep	Oct	Nov	Dec
'11 WD	924	984	908	1,012	1,856	1,786	2,054	2,012	2,162	1,614	1,664	1,048
'11 WE	1,192	1,278	1,174	1,362	2,256	2,882	3,248	3,366	3,086	2,906	2,166	1,250
'12 WD	916	952	990	1,164	2,020	1,722	1,996	2,088	1,896	1,574	1,538	1,022
'12 WE	1,196	1,334	1,396	1,716	2,564	2,876	3,216	3,254	2,900	2,634	2,184	1,166
'13 WD	900	930	912	840	1,696	1,686	1,940	1,520	1,686	1,460	1,584	894
'13 WE	1,116	1,214	1,234	1,182	2,124	2,636	3,230	2,442	2,424	2,562	2,222	1,178
'14 WD	836	836	844	886	1,778	1,732	2,142	2,044	1,788	1,504	1,488	1,034
'14 WE	1,092	1,090	1,162	1,336	2,346	2,510	3,474	3,086	2,640	2,712	2,074	1,254
'15 WD	934	936	998	1,136	1,936	1,830	2,260	1,952	2,034	1,638	1,686	1,042
'15 WE	1,252	1,198	1,388	1,700	2,564	2,934	3,628	3,098	2,900	2,940	2,184	1,282

Note: 'Weekday' defined as Monday-Friday, 'Weekend' defined as Saturday-Sunday

Weekday/Weekend Monthly Average Daily Traffic ('11-'15)



	Dec-11	Dec-12	Dec-13	Dec-14	Dec-15
Weekday	1,048	1,022	894	1,034	1,042
Weekend	1,250	1,166	1,178	1,254	1,282