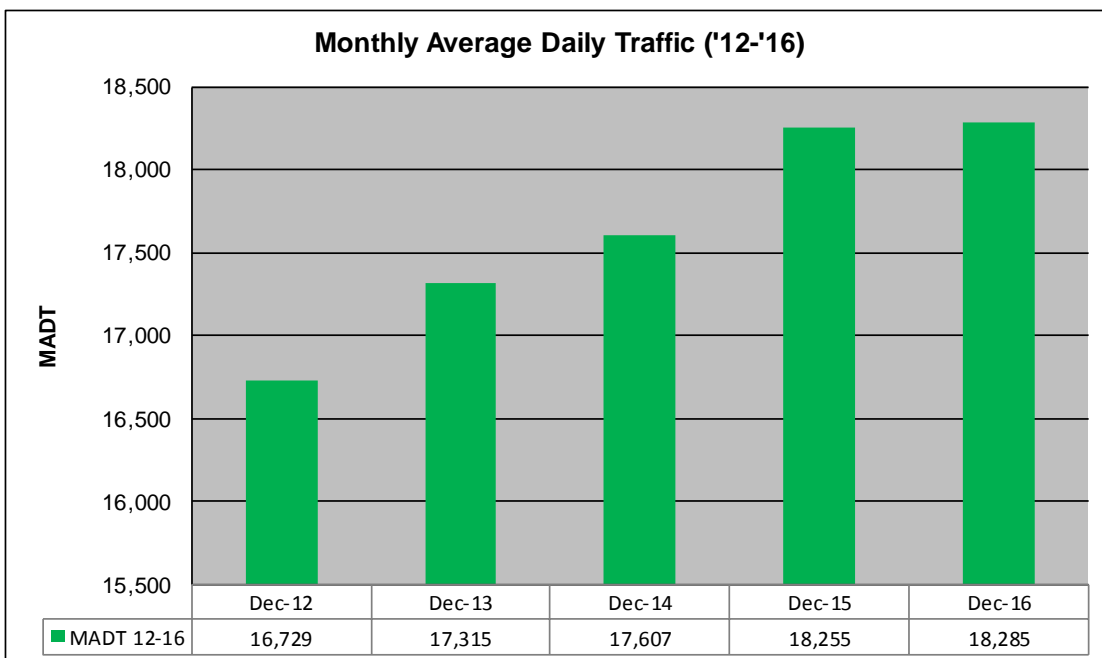
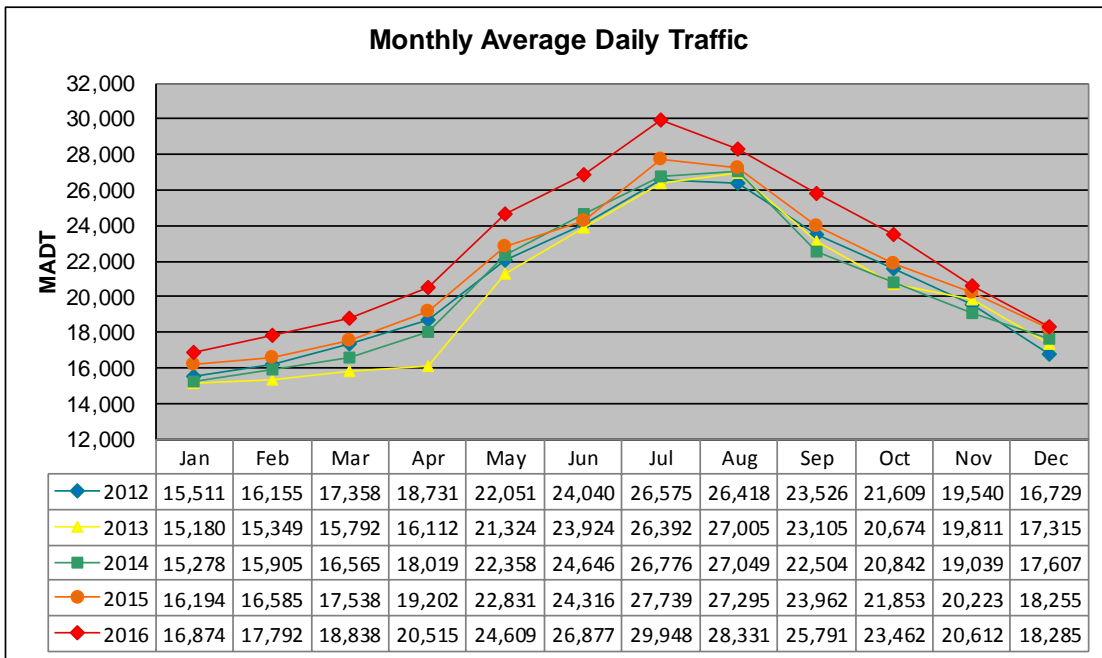


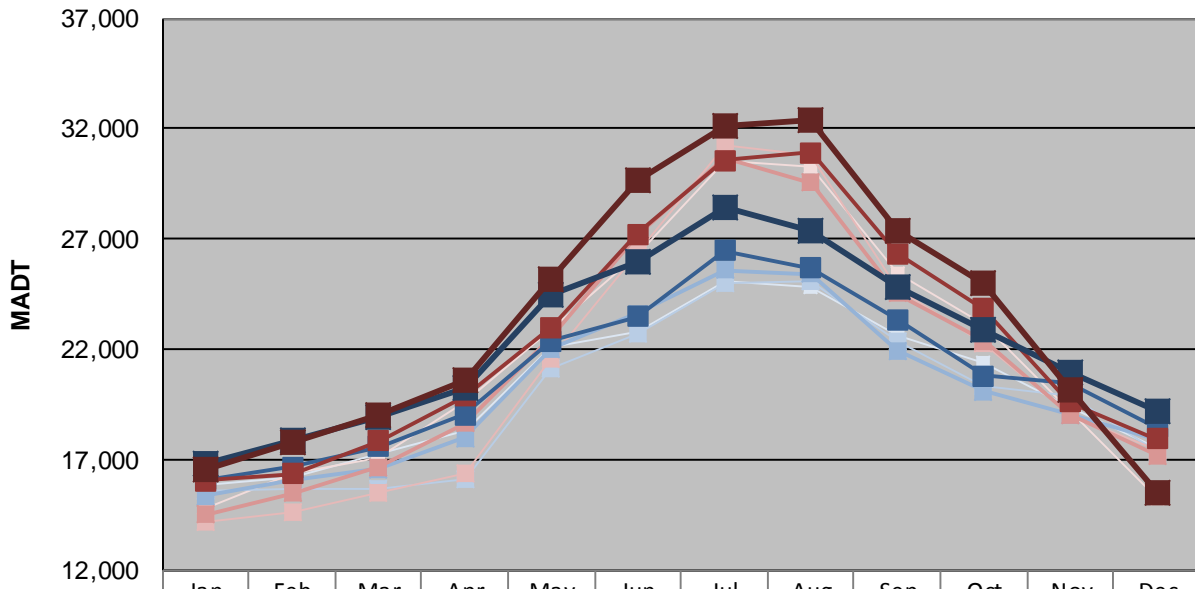
MONTHLY REPORT, STATION NO. 187 (ATR)

DECEMBER 2016

| | | |
|--|----------------------|-------------------------------------|
| Station Measurement: VOLUME/SPEED/CLASS | | |
| Route: TH 10 | Route Direction: N/S | Lanes: 4 |
| County: Benton | Closest City: Rice | |
| Functional Class: Rural Principal Arterial - Other | | |
| Location: .8 MI S OF CR40 (155TH ST NW), N OF RICE | | |
| Ref Post: 160+00.404 | True Mile: 163.637 | Sequence No. 6775 |
| Volume: 566,842 | | MADT: 18,285 |
| Weekday (M-F) MADT: 20,962 | | Weekend (Sa-Su) MADT: 20,188 |



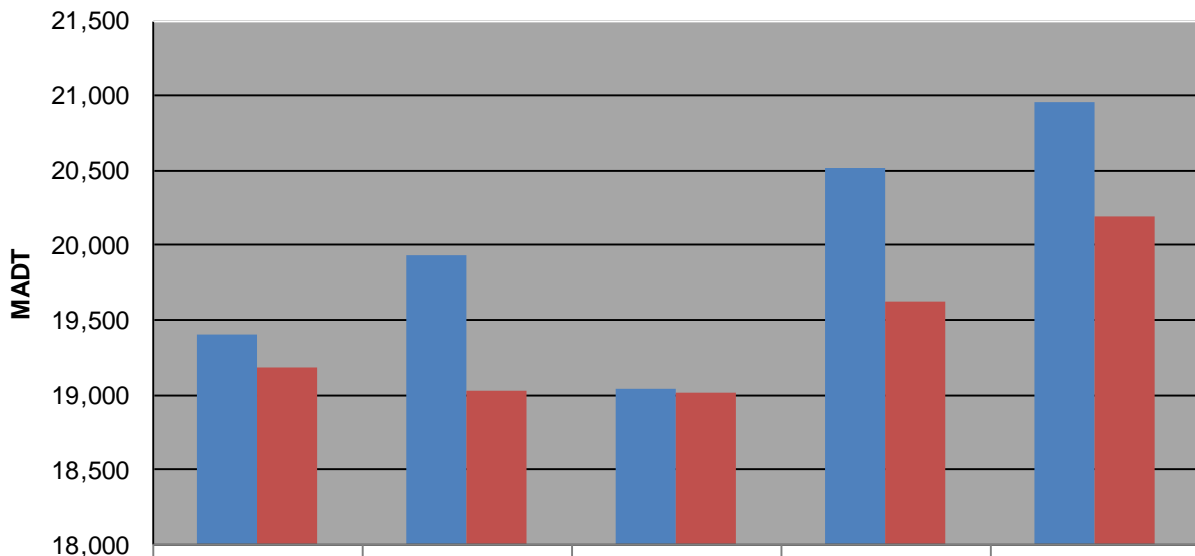
Weekday (WD)/Weekend (WE) Monthly Average Daily Traffic



| | Jan | Feb | Mar | Apr | May | Jun | Jul | Aug | Sep | Oct | Nov | Dec |
|--------|--------|--------|--------|--------|--------|--------|--------|--------|--------|--------|--------|--------|
| '12 WD | 15,872 | 16,196 | 17,278 | 18,344 | 22,126 | 22,824 | 25,080 | 24,788 | 22,582 | 21,392 | 19,406 | 17,538 |
| '12 WE | 14,816 | 16,420 | 17,100 | 19,594 | 22,888 | 26,334 | 30,504 | 30,262 | 25,416 | 23,190 | 19,182 | 15,240 |
| '13 WD | 15,618 | 15,642 | 15,698 | 16,078 | 21,116 | 22,678 | 24,988 | 25,118 | 22,334 | 20,332 | 19,938 | 17,390 |
| '13 WE | 14,170 | 14,616 | 15,488 | 16,392 | 21,546 | 26,416 | 31,252 | 30,834 | 24,750 | 22,314 | 19,034 | 17,442 |
| '14 WD | 15,360 | 16,082 | 16,572 | 17,970 | 22,024 | 23,606 | 25,596 | 25,404 | 21,924 | 20,088 | 19,048 | 17,912 |
| '14 WE | 14,526 | 15,466 | 16,670 | 18,650 | 22,558 | 27,166 | 30,656 | 29,556 | 24,546 | 22,402 | 19,022 | 17,178 |
| '15 WD | 16,082 | 16,684 | 17,590 | 19,022 | 22,398 | 23,492 | 26,456 | 25,684 | 23,372 | 20,792 | 20,514 | 18,470 |
| '15 WE | 16,032 | 16,338 | 17,840 | 19,874 | 22,982 | 27,236 | 30,564 | 30,896 | 26,336 | 23,854 | 19,622 | 17,922 |
| '16 WD | 16,852 | 17,856 | 18,924 | 20,228 | 24,504 | 25,942 | 28,450 | 27,374 | 24,826 | 22,850 | 20,962 | 19,218 |
| '16 WE | 16,560 | 17,792 | 19,024 | 20,586 | 25,182 | 29,700 | 32,148 | 32,394 | 27,344 | 25,042 | 20,188 | 15,474 |

Note: 'Weekday' defined as Monday-Friday, 'Weekend' defined as Saturday-Sunday

Weekday/Weekend Monthly Average Daily Traffic ('12-'16)



| | Dec-12 | Dec-13 | Dec-14 | Dec-15 | Dec-16 |
|---------|--------|--------|--------|--------|--------|
| Weekday | 19,406 | 19,938 | 19,048 | 20,514 | 20,962 |
| Weekend | 19,182 | 19,034 | 19,022 | 19,622 | 20,188 |