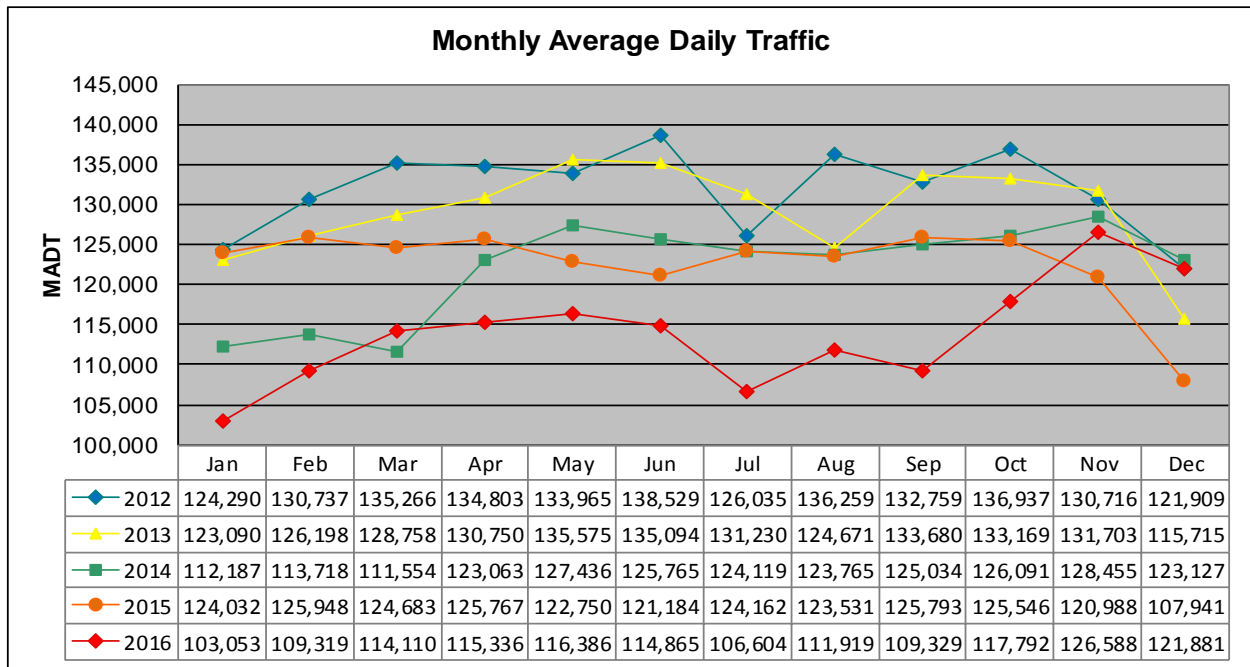


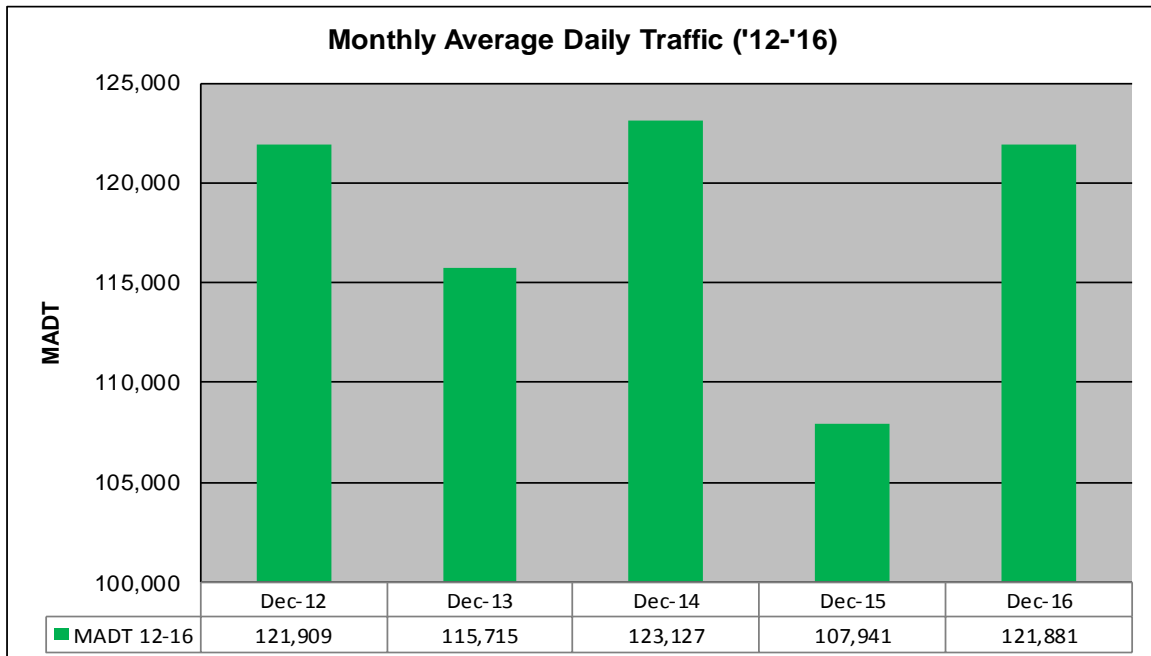
# MONTHLY REPORT, STATION NO. 303 (ATR)

## DECEMBER 2016

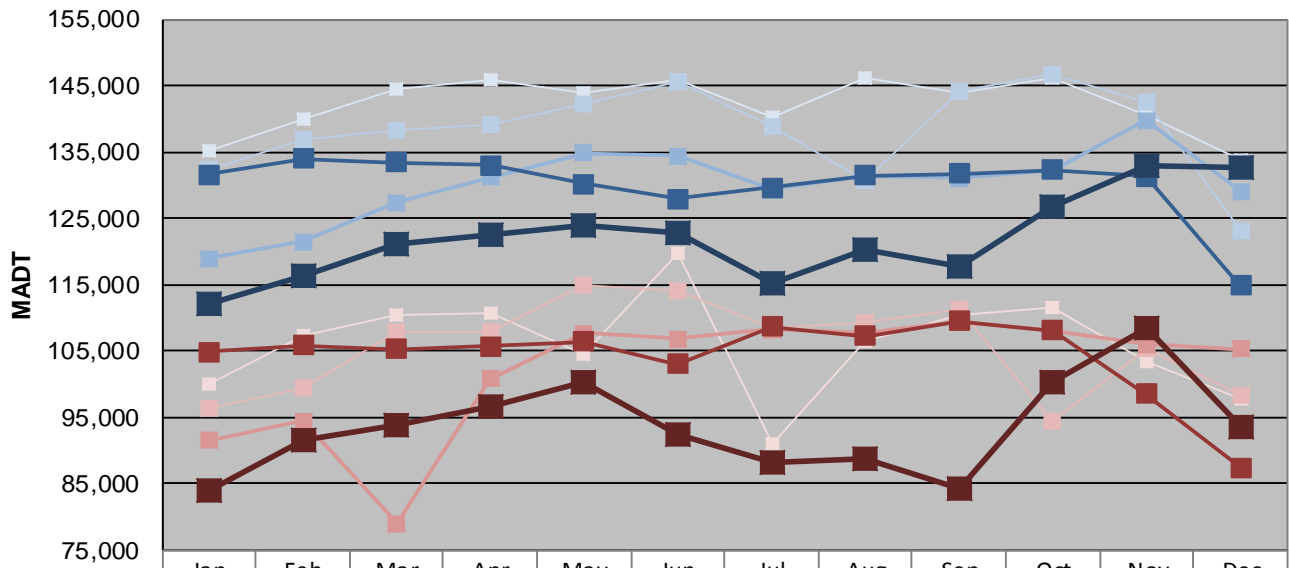
Station Measurement: VOLUME		
Route: I-35E	Route Direction: N/S	Lanes: 6
County: Ramsey		Closest City: St Paul
Functional Class: Urban Principal Arterial - Interstate		
Location: S OF MSAS109 (E ARLINGTON AVE) IN ST PAUL		
Ref Post: 109+00.835	True Mile: 109.893	Sequence No. 9836
<b>Volume: 3,778,320</b>		<b>MADT: 121,881</b>
<b>Weekday (M-F) MADT: 132,978</b>		<b>Weekend (Sa-Su) MADT: 108,348</b>



Note: Decrease in traffic July 2012, August 2013, February/March and July to October 2014, and July to October 2016 due to construction on I-35E



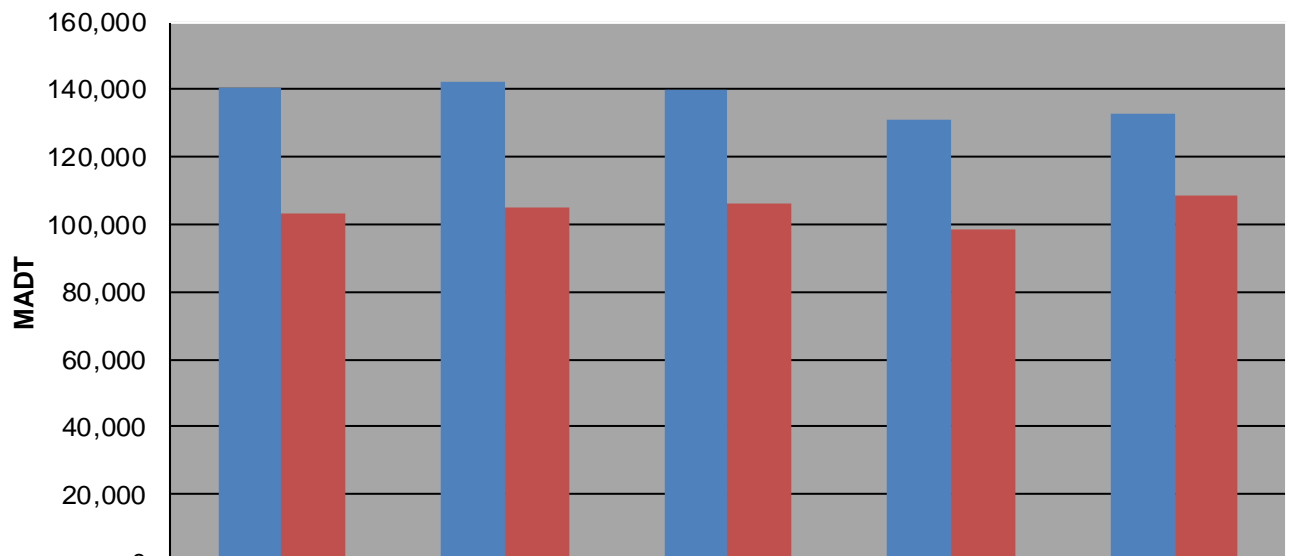
### Weekday (WD)/Weekend (WE) Monthly Average Daily Traffic



	Jan	Feb	Mar	Apr	May	Jun	Jul	Aug	Sep	Oct	Nov	Dec
'12 WD	135,318	139,948	144,506	145,768	143,978	145,906	140,202	146,268	143,884	146,156	140,582	133,864
'12 WE	99,982	107,190	110,406	110,720	104,494	119,572	91,114	106,594	110,512	111,504	103,494	97,834
'13 WD	132,498	136,886	138,196	139,018	142,236	145,560	138,878	130,570	144,116	146,820	142,392	123,084
'13 WE	96,464	99,480	107,902	107,950	114,782	114,162	108,540	109,280	111,160	94,312	105,278	98,366
'14 WD	118,890	121,424	127,318	131,128	134,758	134,460	129,276	131,398	131,096	132,234	139,704	129,116
'14 WE	91,462	94,454	78,988	100,772	107,710	106,824	108,206	107,634	109,442	108,132	105,956	105,260
'15 WD	131,588	133,970	133,406	133,036	130,228	127,948	129,562	131,412	131,670	132,236	131,302	114,872
'15 WE	104,916	105,896	105,218	105,748	106,378	103,068	108,668	107,264	109,442	108,134	98,474	87,390
'16 WD	112,212	116,284	121,186	122,526	123,816	122,914	115,102	120,190	117,842	126,612	132,978	132,690
'16 WE	83,870	91,516	93,820	96,594	100,152	92,260	88,146	88,846	84,334	100,172	108,348	93,564

Note: 'Weekday' defined as Monday-Friday, 'Weekend' defined as Saturday-Sunday

### Weekday/Weekend Monthly Average Daily Traffic ('12-'16)



	Dec-12	Dec-13	Dec-14	Dec-15	Dec-16
Weekday	140,582	142,392	139,704	131,302	132,978
Weekend	103,494	105,278	105,956	98,474	108,348