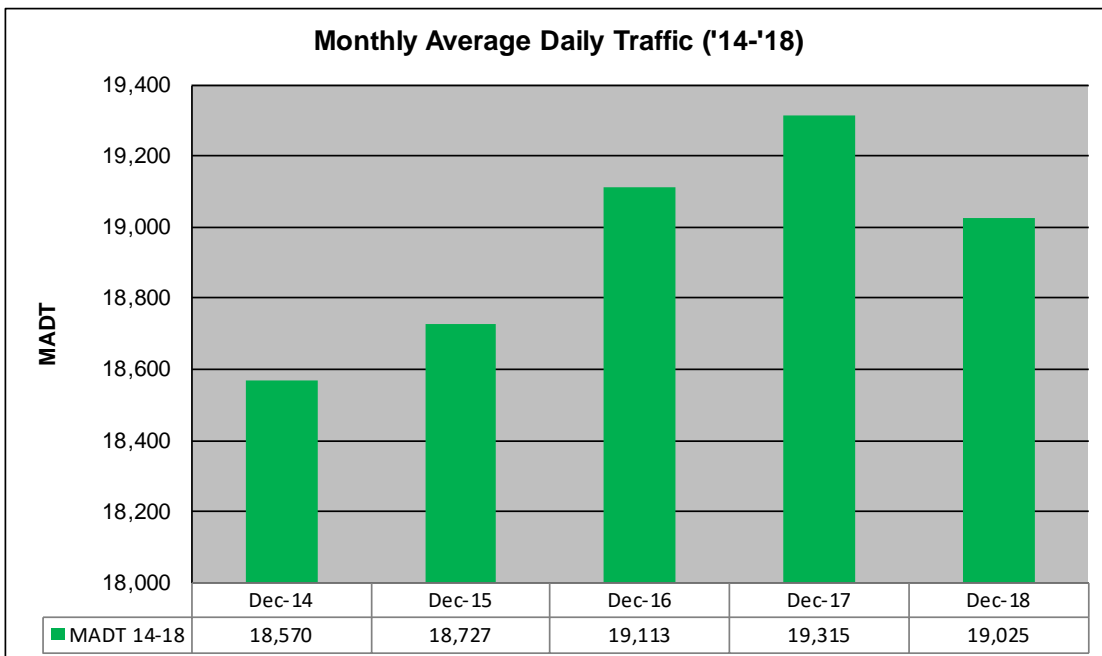
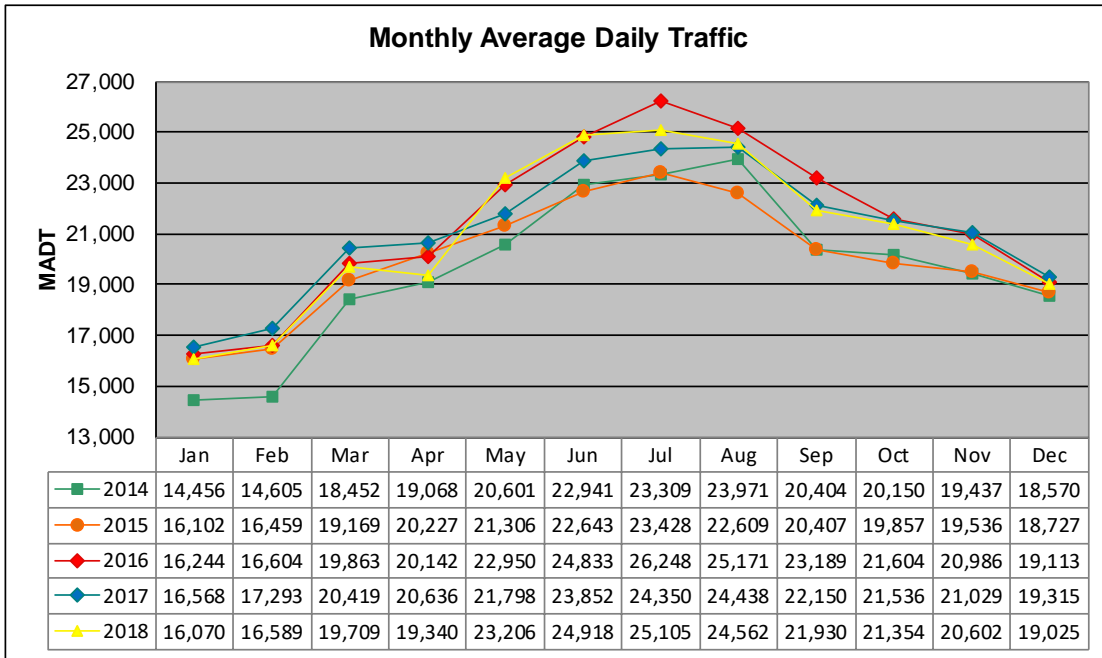


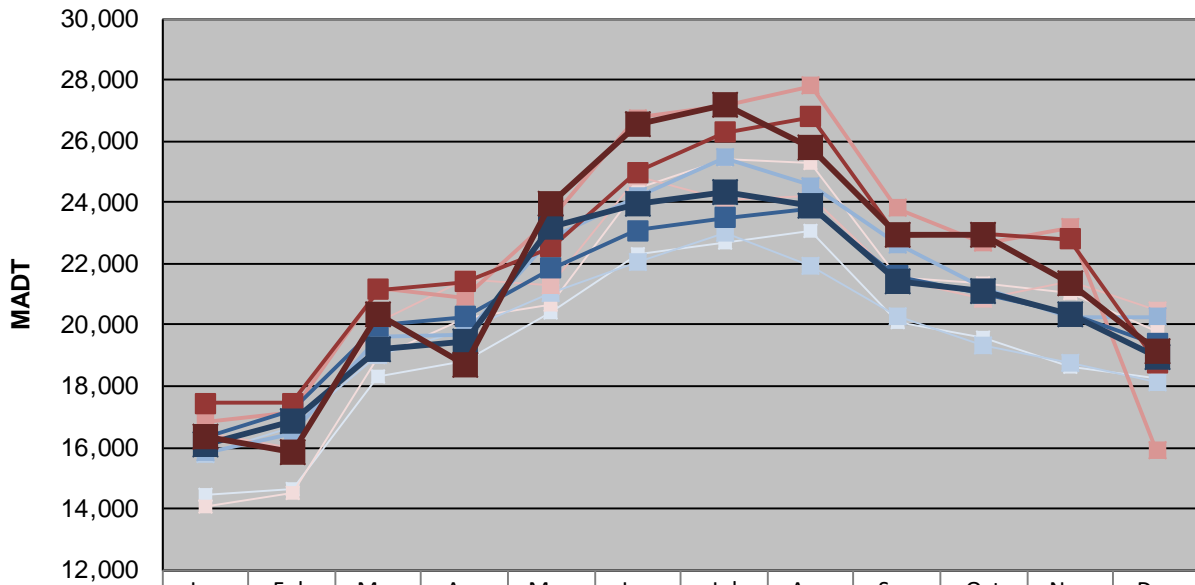
# MONTHLY REPORT, STATION NO. 26 (WIM)

## DECEMBER 2018

|   |                         |                                     |
|---|-------------------------|-------------------------------------|
| Station Measurement: VOLUME/SPEED/CLASS/WEIGHT          |                         |                                     |
| Route: I-35   | Route Direction: N/S    | Lanes: 4                            |
| County: Steele  | Closest City: Ellendale |                                     |
| Functional Class: Rural Principal Arterial - Interstate |                         |                                     |
| Location: 3.5 MI N OF TH30, N OF ELLENDALE              |                         |                                     |
| Ref Post: 030+00.100                                    | True Mile: 30.103       | Sequence No. 5707                   |
| <b>Volume: 589,786</b>                                  |                         | <b>MADT: 19,025</b>                 |
| <b>Weekday (M-F) MADT: 18,962</b>                       |                         | <b>Weekend (Sa-Su) MADT: 19,158</b> |



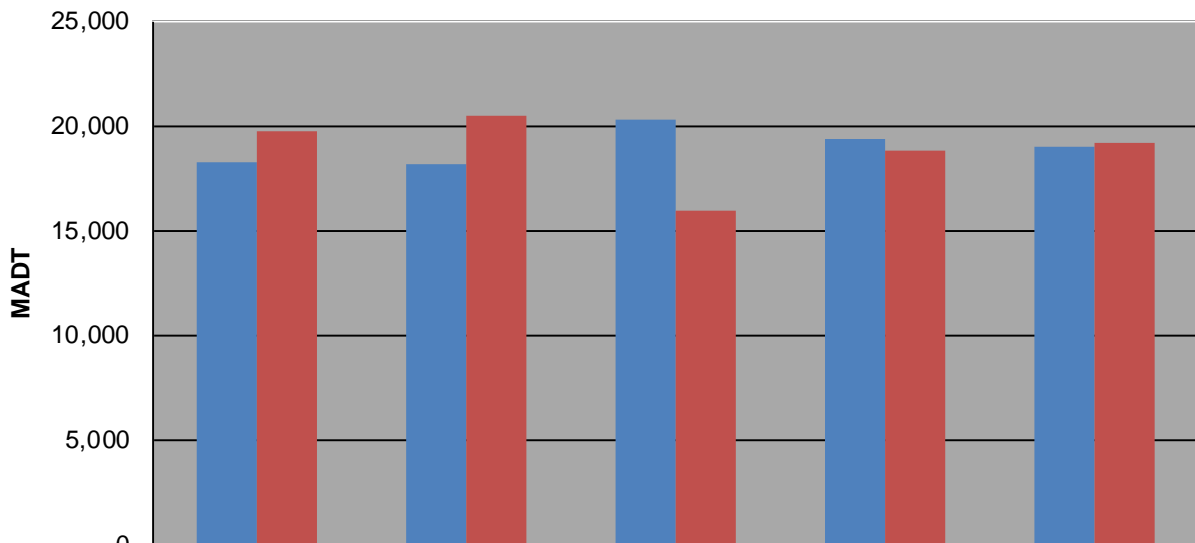
### Weekday (WD)/Weekend (WE) Monthly Average Daily Traffic



|        | Jan    | Feb    | Mar    | Apr    | May    | Jun    | Jul    | Aug    | Sep    | Oct    | Nov    | Dec    |
|--------|--------|--------|--------|--------|--------|--------|--------|--------|--------|--------|--------|--------|
| '14 WD | 14,448 | 14,648 | 18,298 | 18,856 | 20,390 | 22,296 | 22,692 | 23,042 | 20,094 | 19,582 | 18,642 | 18,284 |
| '14 WE | 14,074 | 14,500 | 18,940 | 20,210 | 20,660 | 24,446 | 25,398 | 25,264 | 21,574 | 21,334 | 21,026 | 19,764 |
| '15 WD | 15,786 | 16,646 | 18,988 | 19,864 | 21,050 | 22,058 | 23,002 | 21,918 | 20,280 | 19,314 | 18,768 | 18,134 |
| '15 WE | 16,482 | 15,992 | 20,094 | 21,458 | 21,266 | 24,854 | 24,112 | 24,186 | 21,486 | 20,852 | 21,404 | 20,504 |
| '16 WD | 15,830 | 16,432 | 19,650 | 19,652 | 22,846 | 24,194 | 25,474 | 24,554 | 22,642 | 21,178 | 20,282 | 20,266 |
| '16 WE | 16,850 | 17,160 | 21,194 | 20,886 | 23,492 | 26,766 | 27,146 | 27,806 | 23,826 | 22,674 | 23,188 | 15,912 |
| '17 WD | 16,318 | 17,230 | 19,974 | 20,258 | 21,844 | 23,100 | 23,490 | 23,830 | 21,586 | 21,038 | 20,382 | 19,382 |
| '17 WE | 17,448 | 17,454 | 21,150 | 21,392 | 22,546 | 24,984 | 26,294 | 26,800 | 22,914 | 23,000 | 22,806 | 18,784 |
| '18 WD | 16,084 | 16,876 | 19,232 | 19,482 | 23,222 | 23,960 | 24,336 | 23,888 | 21,414 | 21,098 | 20,322 | 18,962 |
| '18 WE | 16,380 | 15,870 | 20,330 | 18,696 | 23,968 | 26,554 | 27,170 | 25,812 | 22,964 | 22,922 | 21,338 | 19,158 |

Note: 'Weekday' defined as Monday-Friday, 'Weekend' defined as Saturday-Sunday

### Weekday/Weekend Monthly Average Daily Traffic ('14-'18)



|         | Dec-14 | Dec-15 | Dec-16 | Dec-17 | Dec-18 |
|---------|--------|--------|--------|--------|--------|
| Weekday | 18,284 | 18,134 | 20,266 | 19,382 | 18,962 |
| Weekend | 19,764 | 20,504 | 15,912 | 18,784 | 19,158 |