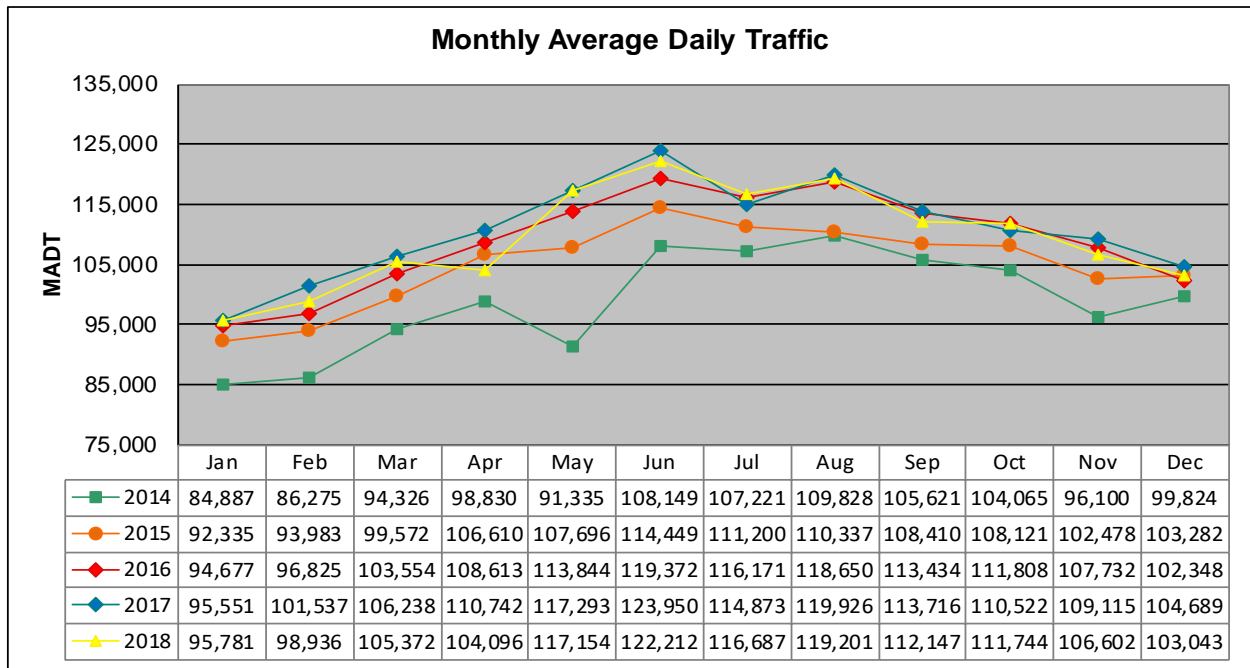


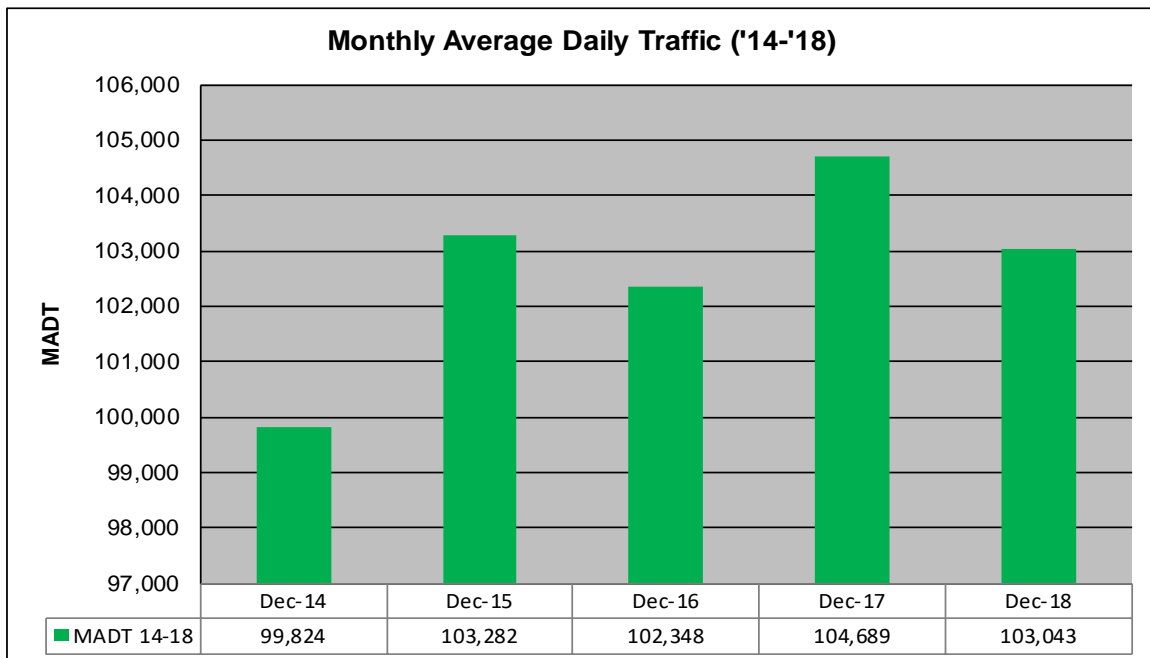
# MONTHLY REPORT, STATION NO. 305 (ATR)

## DECEMBER 2018

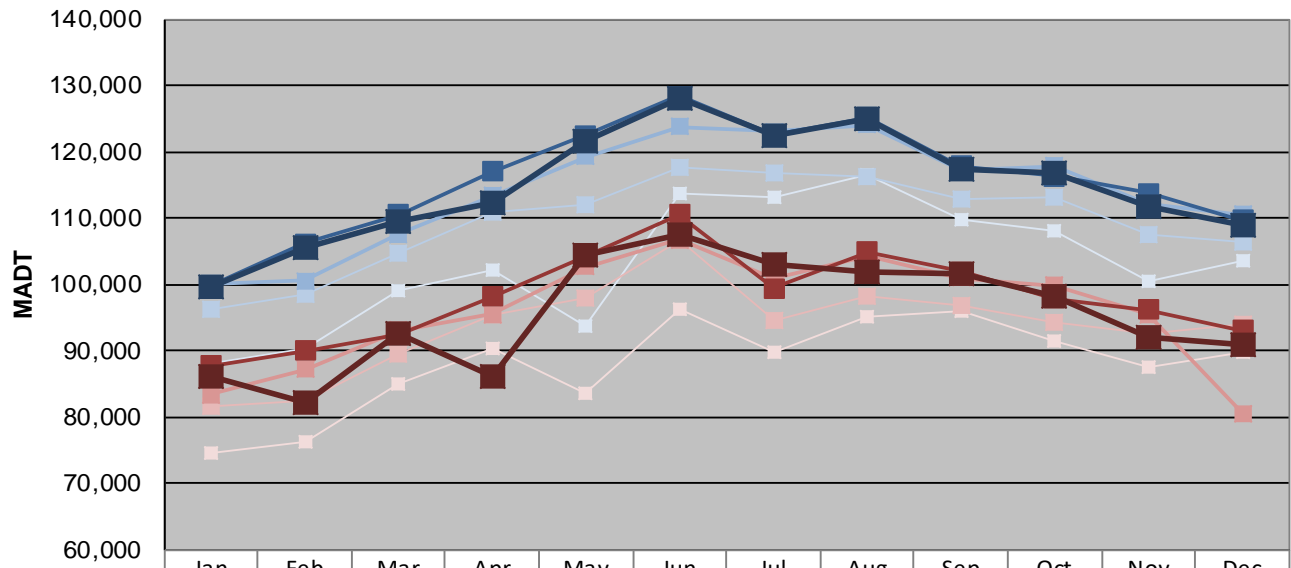
Station Measurement: VOLUME		
Route: I-35	Route Direction: N/S	Lanes: 6
County: Dakota		Closest City: Burnsville
Functional Class: Urban Principal Arterial - Interstate		
Location: S OF MSAS101 (CRYSTAL LAKE RD W) IN BURNSVILLE		
Ref Post: 087+00.070	True Mile: 87.071	Sequence No. 6786
<b>Volume: 3,194,334</b>		<b>MADT: 103,043</b>
<b>Weekday (M-F) MADT: 108,866</b>		<b>Weekend (Sa-Su) MADT: 90,815</b>



Note: Decrease in traffic May 2014 due to construction on I-35



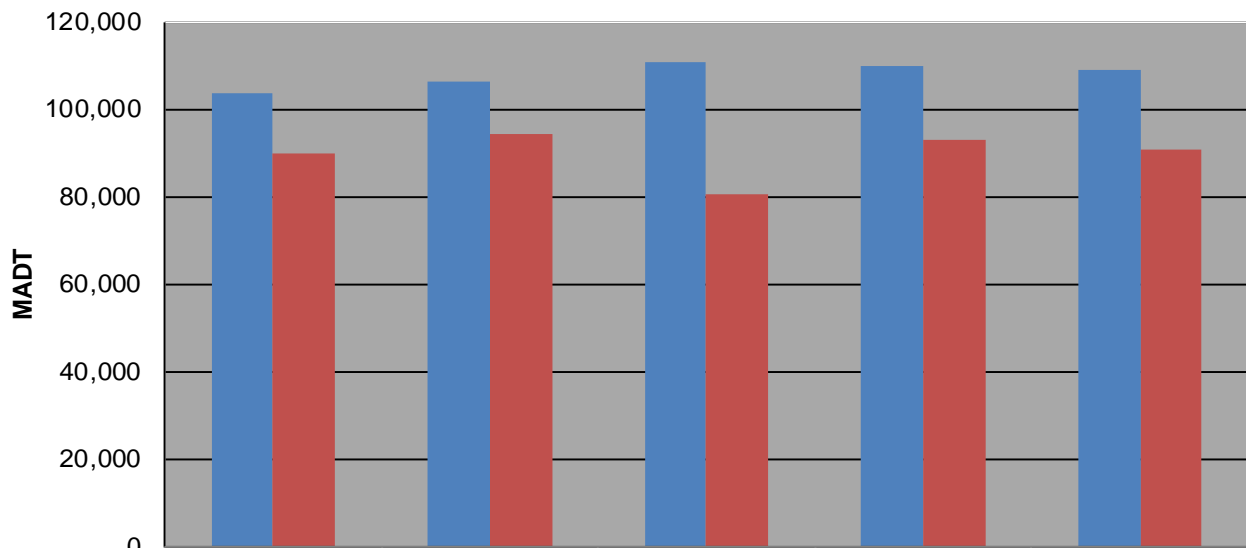
### Weekday (WD)/Weekend (WE) Monthly Average Daily Traffic



	Jan	Feb	Mar	Apr	May	Jun	Jul	Aug	Sep	Oct	Nov	Dec
'14 WD	88,080	90,318	99,136	102,146	93,668	113,796	113,060	116,428	109,654	108,106	100,442	103,478
'14 WE	74,490	76,166	84,924	90,248	83,490	96,168	89,686	95,200	95,856	91,484	87,418	89,712
'15 WD	96,154	98,564	104,734	110,762	111,910	117,718	116,712	116,334	112,770	113,120	107,400	106,438
'15 WE	81,644	82,530	89,394	95,306	97,888	106,542	94,508	98,192	96,778	94,292	92,586	94,124
'16 WD	99,964	100,604	107,548	113,384	119,252	123,822	123,038	123,988	117,294	117,852	112,274	110,518
'16 WE	83,422	87,146	93,096	95,530	102,650	106,710	100,766	104,256	100,946	99,776	95,500	80,522
'17 WD	99,804	106,172	110,586	117,066	122,528	128,360	122,502	125,198	117,874	116,338	113,786	109,756
'17 WE	87,684	89,952	92,518	98,094	104,164	110,604	99,378	104,922	101,966	97,886	96,246	93,156
'18 WD	99,760	105,610	109,540	112,214	121,578	127,988	122,502	124,826	117,374	116,940	111,853	108,866
'18 WE	86,054	82,250	92,456	86,030	104,358	107,472	103,000	101,888	101,694	98,282	92,160	90,815

Note: 'Weekday' defined as Monday-Friday, 'Weekend' defined as Saturday-Sunday

### Weekday/Weekend Monthly Average Daily Traffic ('14-'18)



	Dec-14	Dec-15	Dec-16	Dec-17	Dec-18
Weekday	103,478	106,438	110,518	109,756	108,866
Weekend	89,712	94,124	80,522	93,156	90,815