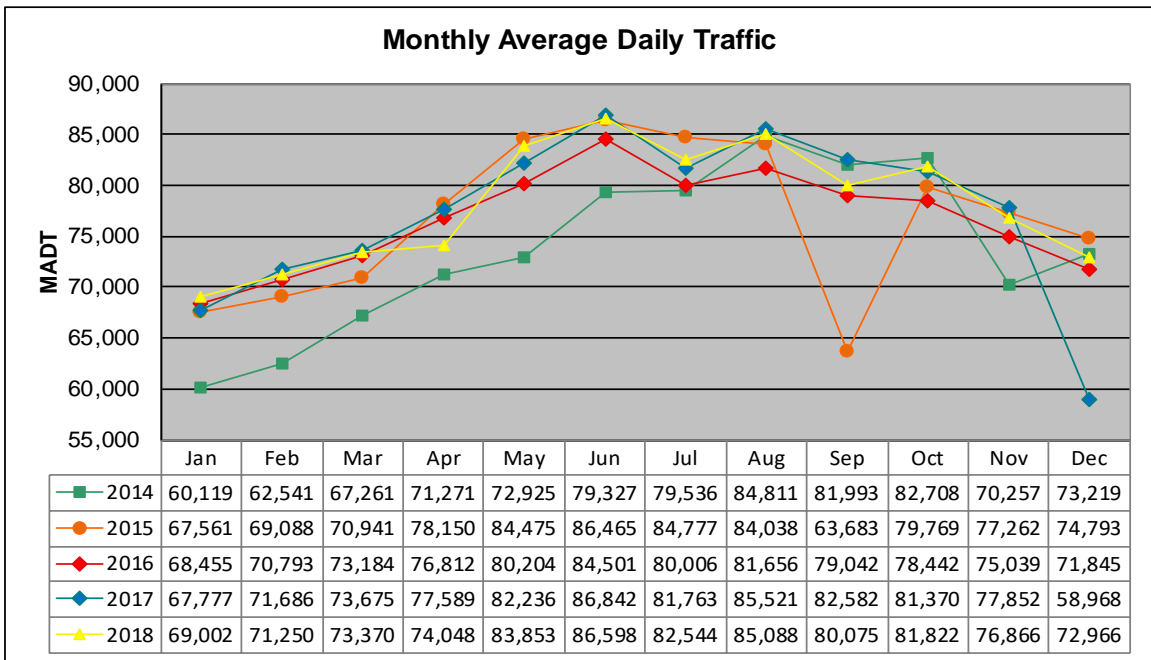


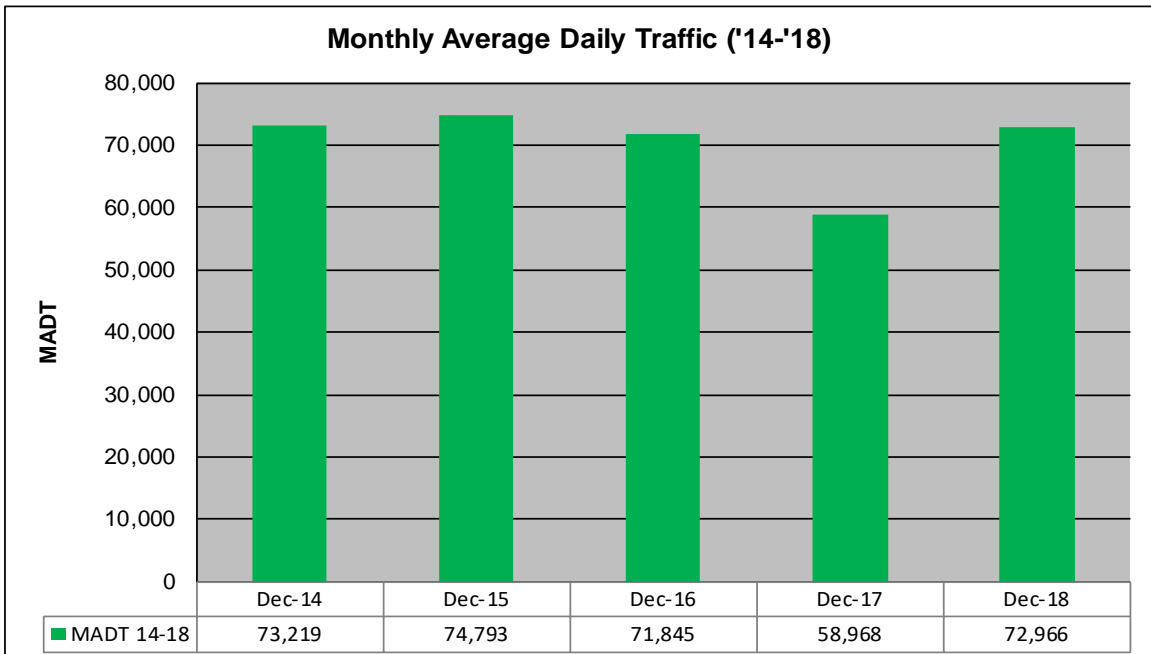
MONTHLY REPORT, STATION NO. 341 (ATR)

DECEMBER 2018

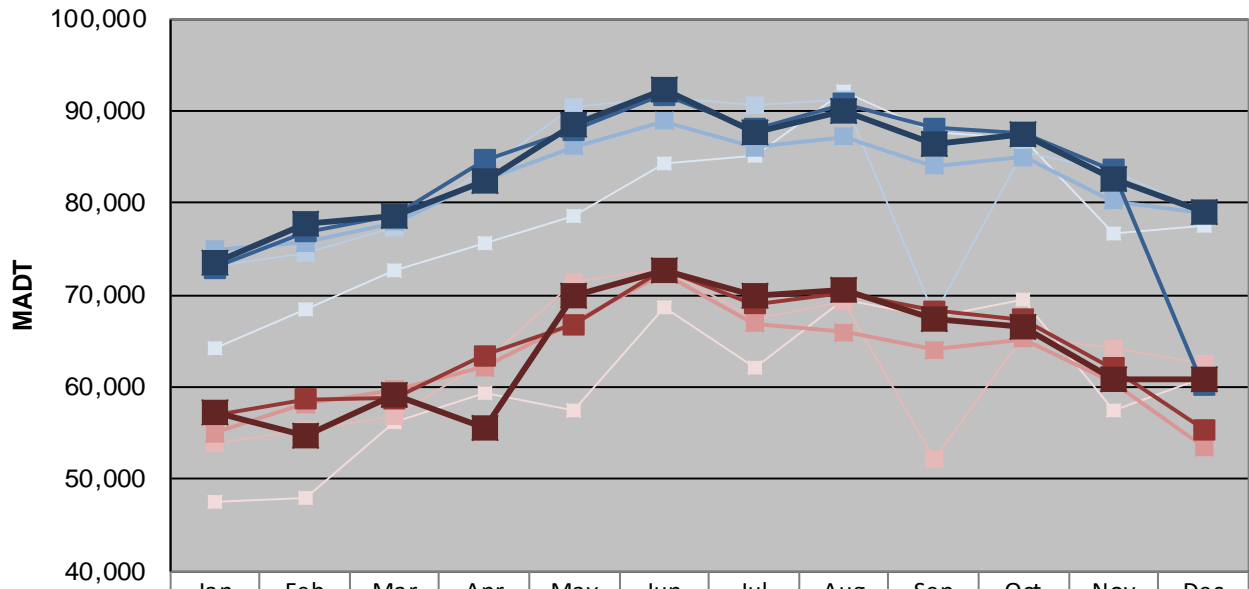
| | | |
|---|----------------------|-------------------------------------|
| Station Measurement: VOLUME/SPEED/CLASS | | |
| Route: I-694 | Route Direction: N/S | Lanes: 4 |
| County: Washington | | Closest City: Oakdale |
| Functional Class: Urban Principal Arterial - Interstate | | |
| Location: S OF CSAH35 (50TH ST N) IN OAKDALE | | |
| Ref Post: 053+00.290 | True Mile: 53.237 | Sequence No. 9858 |
| Volume: 2,188,977* (30 days) | | MADT: 72,966 |
| Weekday (M-F) MADT: 79,026 | | Weekend (Sa-Su) MADT: 60,846 |



Note: Increase in traffic June to October 2014, and May/July/August/October 2015 due to detour from TH 36... Decrease in traffic December 2017 due to construction on I-694



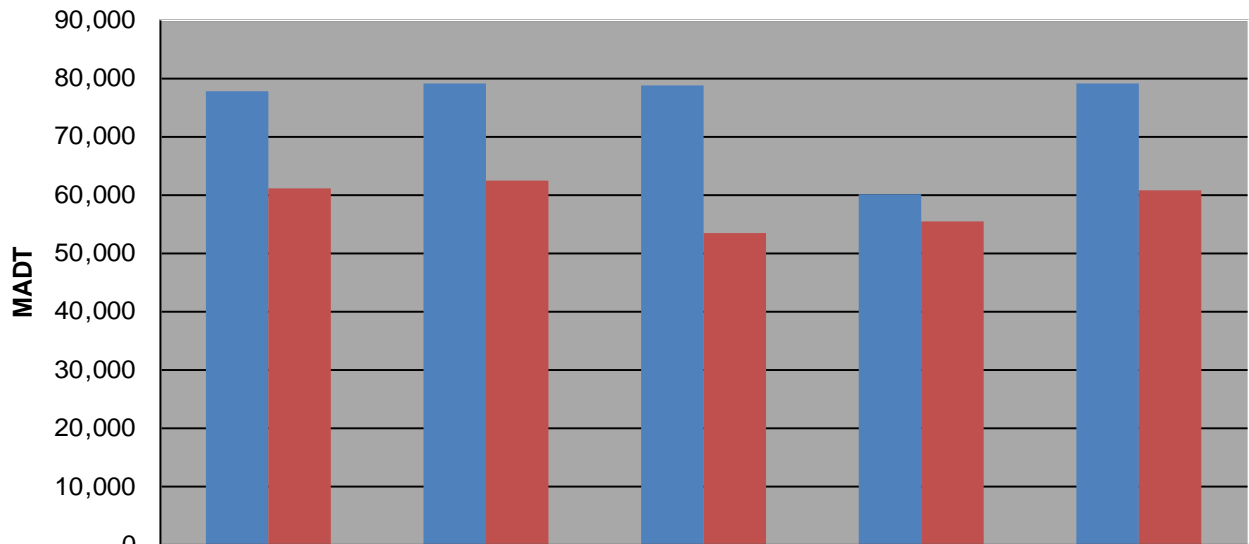
Weekday (WD)/Weekend (WE) Monthly Average Daily Traffic



| | Jan | Feb | Mar | Apr | May | Jun | Jul | Aug | Sep | Oct | Nov | Dec |
|--------|--------|--------|--------|--------|--------|--------|--------|--------|--------|--------|--------|--------|
| '14 WD | 64,214 | 68,354 | 72,636 | 75,598 | 78,628 | 84,274 | 85,226 | 92,014 | 87,620 | 87,094 | 76,676 | 77,582 |
| '14 WE | 47,458 | 48,006 | 56,300 | 59,390 | 57,494 | 68,692 | 62,098 | 69,502 | 67,518 | 69,556 | 57,420 | 60,972 |
| '15 WD | 73,020 | 74,556 | 77,256 | 83,746 | 90,514 | 91,538 | 90,672 | 91,244 | 67,726 | 85,606 | 83,410 | 79,050 |
| '15 WE | 53,832 | 55,416 | 56,890 | 62,694 | 71,362 | 72,802 | 67,476 | 69,208 | 52,288 | 65,564 | 64,174 | 62,518 |
| '16 WD | 74,940 | 75,714 | 77,918 | 82,550 | 86,174 | 88,828 | 86,000 | 87,224 | 84,052 | 84,986 | 80,204 | 78,846 |
| '16 WE | 54,950 | 58,186 | 59,722 | 62,198 | 66,996 | 72,386 | 66,972 | 65,980 | 64,126 | 65,218 | 60,632 | 53,538 |
| '17 WD | 72,942 | 76,874 | 78,620 | 84,642 | 87,944 | 91,702 | 88,024 | 90,822 | 88,124 | 87,544 | 83,550 | 60,212 |
| '17 WE | 57,022 | 58,720 | 58,786 | 63,486 | 66,820 | 72,766 | 69,018 | 70,274 | 68,336 | 67,344 | 62,086 | 55,460 |
| '18 WD | 73,436 | 77,840 | 78,510 | 82,304 | 88,484 | 92,222 | 87,766 | 89,906 | 86,460 | 87,384 | 82,673 | 79,026 |
| '18 WE | 57,268 | 54,776 | 59,132 | 55,636 | 70,024 | 72,698 | 69,898 | 70,544 | 67,306 | 66,560 | 60,896 | 60,846 |

Note: 'Weekday' defined as Monday-Friday, 'Weekend' defined as Saturday-Sunday

Weekday/Weekend Monthly Average Daily Traffic ('14-'18)



| | Dec-14 | Dec-15 | Dec-16 | Dec-17 | Dec-18 |
|---------|--------|--------|--------|--------|--------|
| Weekday | 77,582 | 79,050 | 78,846 | 60,212 | 79,026 |
| Weekend | 60,972 | 62,518 | 53,538 | 55,460 | 60,846 |