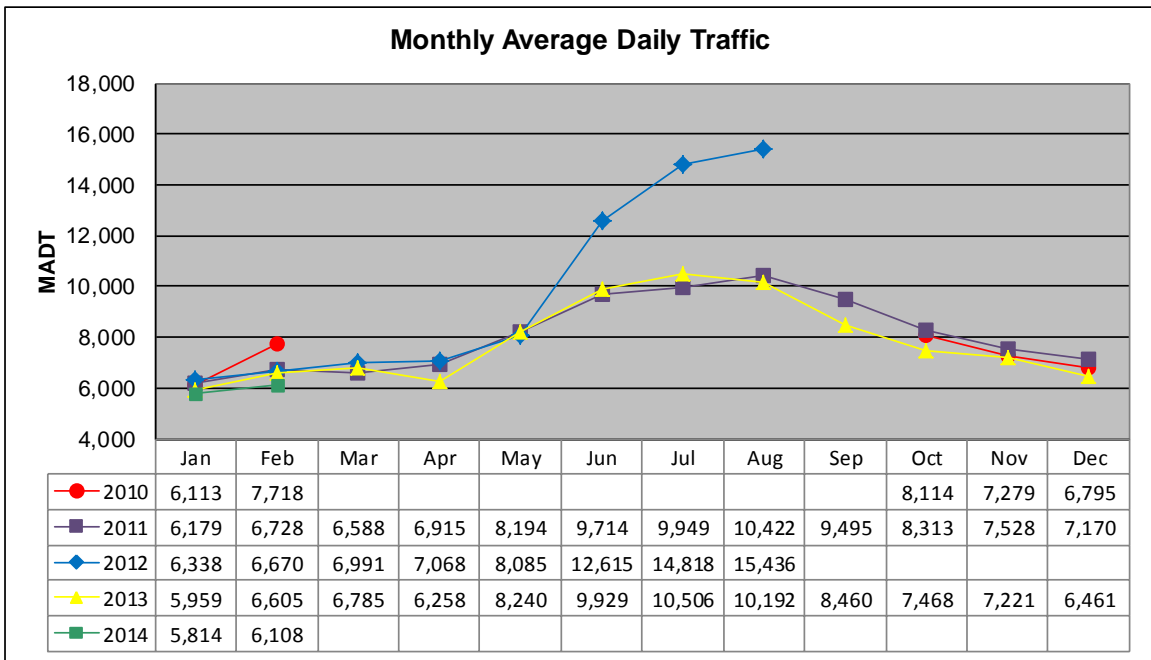


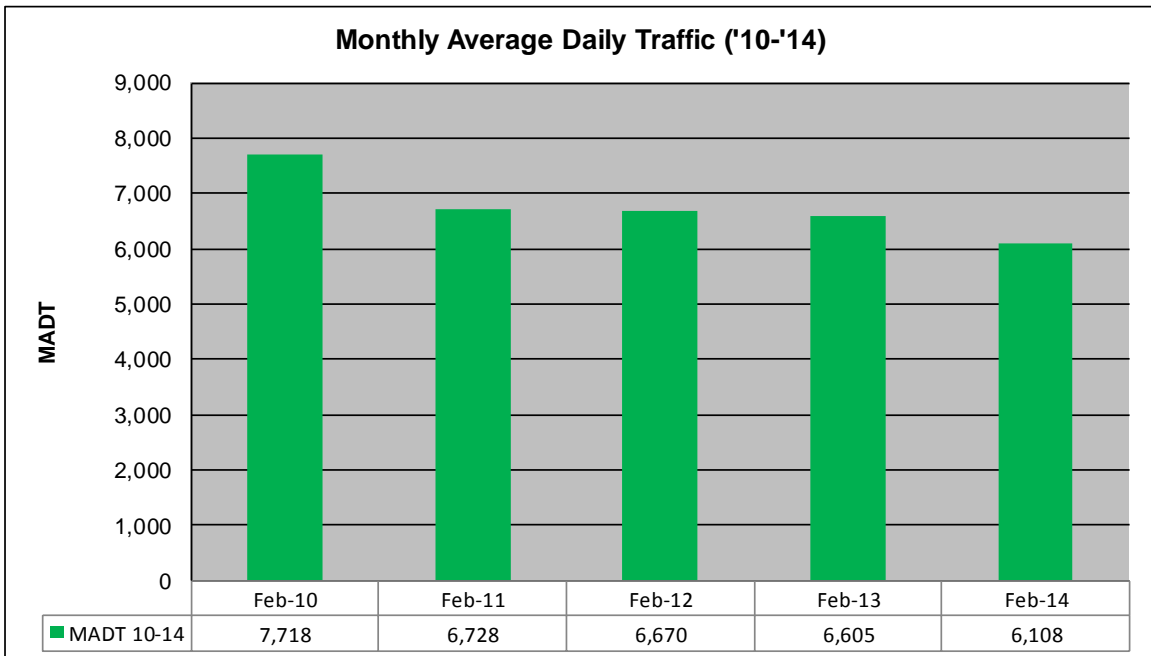
MONTHLY REPORT, STATION NO. 29 (WIM)

FEBRUARY 2014

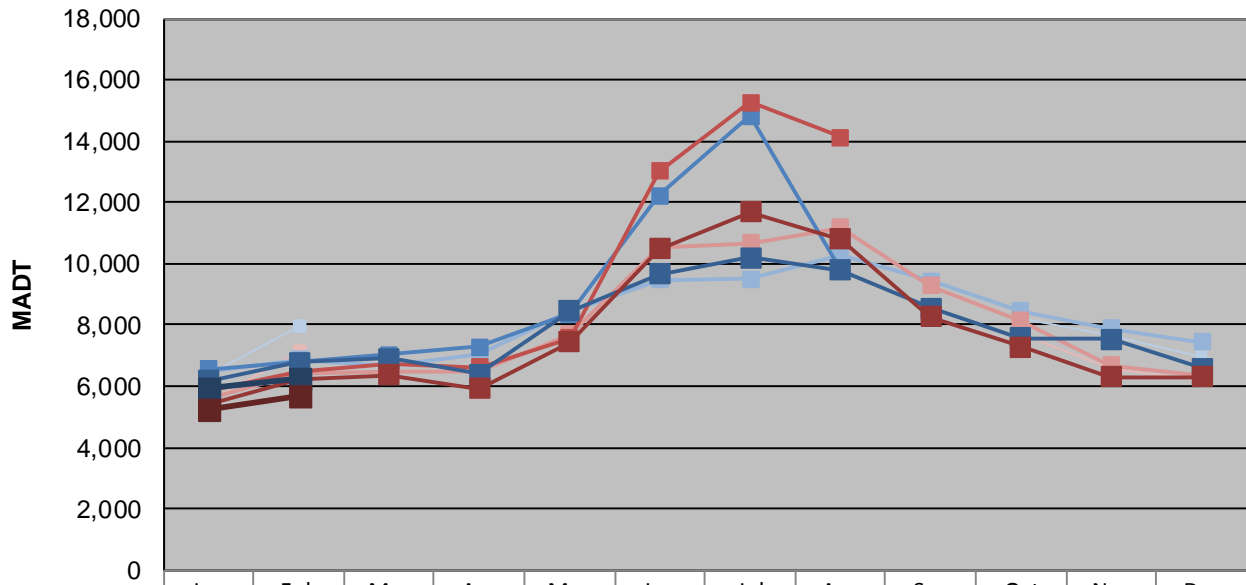
Station Measurement: VOLUME/SPEED/CLASS/WEIGHT		
Route: TH 53	Route Direction: N/S	Lanes: 4
County: St Louis	Closest City: Eveleth	
Functional Class: Rural Principal Arterial - Other		
Location: 3 MI S OF CSAH59 (MELRUDE RD), S OF EVELETH		
Ref Post: 042+00.100	True Mile: 42.218	Sequence No. 6763
Volume: 171,028		MADT: 6,108
Weekday (M-F) MADT: 6,270		Weekend (Sa-Su) MADT: 5,706



Note: No data March to September 2010 and September to December 2012 due to problem with equipment... Increase in traffic June to August 2012 due to detour from I-35



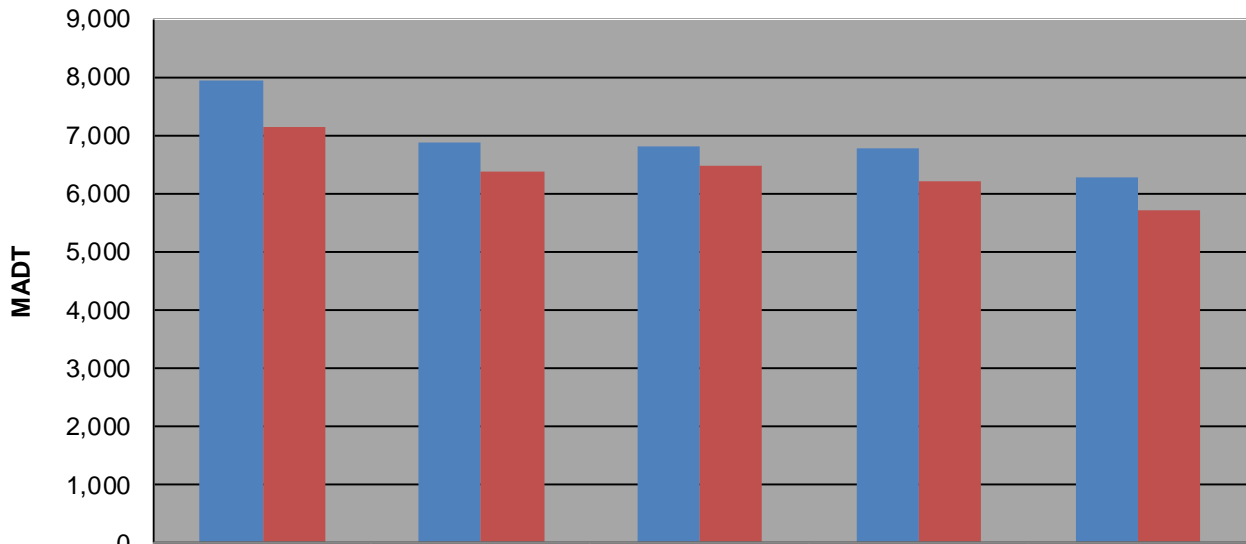
Weekday (WD)/Weekend (WE) Monthly Average Daily Traffic



	Jan	Feb	Mar	Apr	May	Jun	Jul	Aug	Sep	Oct	Nov	Dec
'10 WD	6,390	7,948								8,216	7,622	6,984
'10 WE	5,490	7,144								7,714	6,576	6,184
'11 WD	6,470	6,866	6,682	7,070	8,468	9,474	9,502	10,288	9,448	8,450	7,882	7,448
'11 WE	5,610	6,384	6,454	6,458	7,708	10,504	10,668	11,182	9,270	8,128	6,698	6,380
'12 WD	6,568	6,800	7,036	7,284	8,356	12,220	14,828	9,784				
'12 WE	5,874	6,474	6,712	6,632	7,558	13,010	15,258	14,134				
'13 WD	6,186	6,764	6,902	6,384	8,460	9,646	10,192	9,788	8,558	7,574	7,534	6,588
'13 WE	5,390	6,208	6,378	5,912	7,460	10,496	11,694	10,800	8,264	7,300	6,318	6,296
'14 WD	5,972	6,270										
'14 WE	5,214	5,706										

Note: 'Weekday' defined as Monday-Friday, 'Weekend' defined as Saturday-Sunday

Weekday/Weekend Monthly Average Daily Traffic ('10-'14)



	Feb-10	Feb-11	Feb-12	Feb-13	Feb-14
Weekday	7,948	6,866	6,800	6,764	6,270
Weekend	7,144	6,384	6,474	6,208	5,706