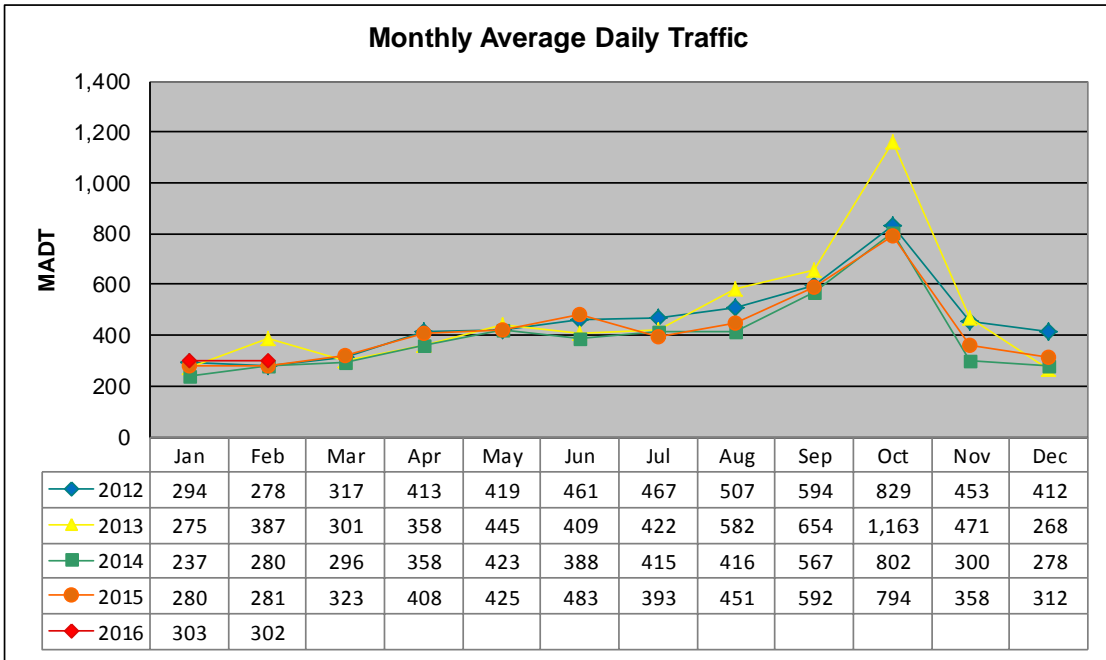


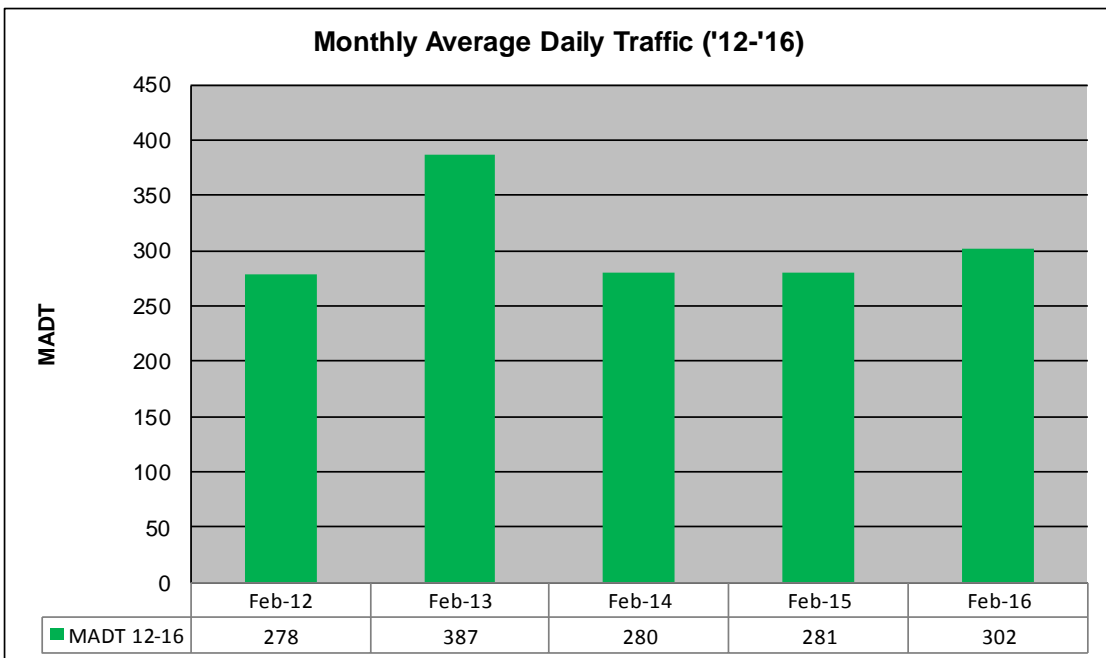
# MONTHLY REPORT, STATION NO. 41 (WIM)

## FEBRUARY 2016

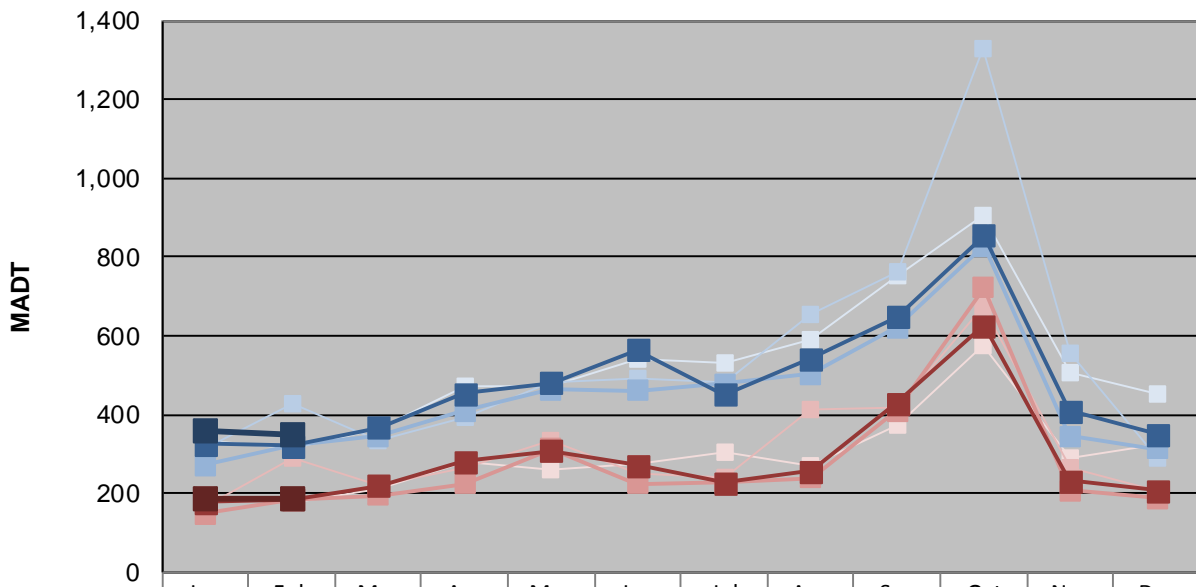
|  |                         |                                  |
|--|-------------------------|----------------------------------|
| Station Measurement: VOLUME/SPEED/CLASS/WEIGHT |                         |                                  |
| Route: CSAH 14                                 | Route Direction: N/S    | Lanes: 2                         |
| County: Polk                                   | Closest City: Crookston |                                  |
| Functional Class: Rural Major Collector        |                         |                                  |
| Location: 1.3 MI N OF CSAH45, S OF CROOKSTON   |                         |                                  |
| Ref Post: 014+00.850                           | True Mile: 14.85        | Sequence No. 9817                |
| <b>Volume: 8,752</b>                           |                         | <b>MADT: 302</b>                 |
| <b>Weekday (M-F) MADT: 348</b>                 |                         | <b>Weekend (Sa-Su) MADT: 184</b> |



Note: Increase in traffic during Octobers due to beet harvesting



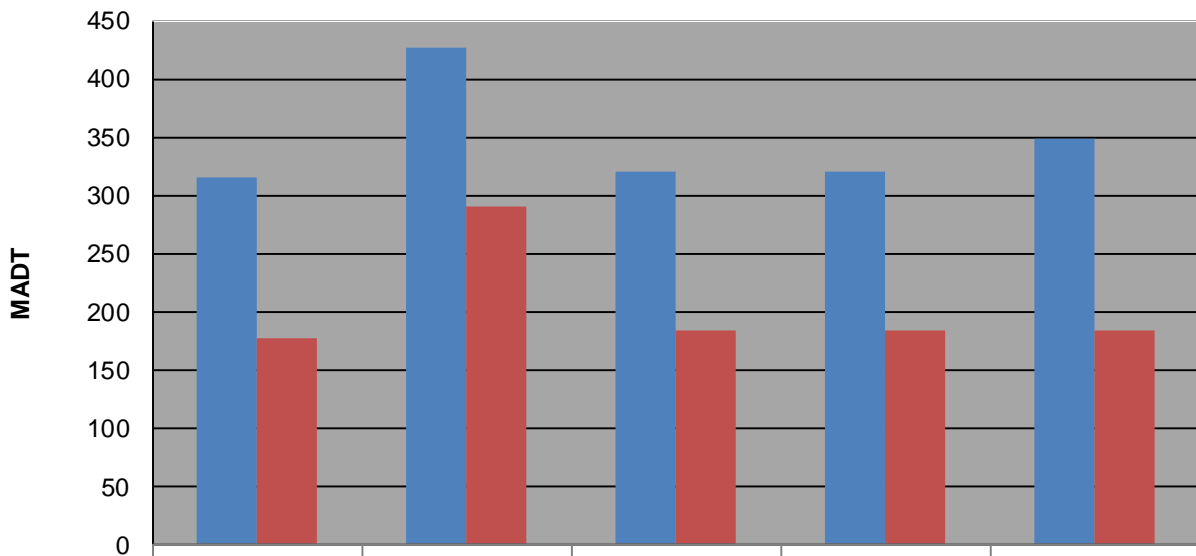
### Weekday (WD)/Weekend (WE) Monthly Average Daily Traffic



|        | Jan | Feb | Mar | Apr | May | Jun | Jul | Aug | Sep | Oct   | Nov | Dec |
|--------|-----|-----|-----|-----|-----|-----|-----|-----|-----|-------|-----|-----|
| '12 WD | 334 | 316 | 362 | 474 | 472 | 540 | 530 | 588 | 754 | 906   | 506 | 454 |
| '12 WE | 198 | 178 | 212 | 280 | 260 | 276 | 306 | 270 | 372 | 574   | 292 | 326 |
| '13 WD | 312 | 426 | 336 | 392 | 480 | 490 | 482 | 652 | 764 | 1,330 | 558 | 292 |
| '13 WE | 166 | 290 | 222 | 264 | 334 | 250 | 238 | 412 | 416 | 674   | 266 | 208 |
| '14 WD | 270 | 320 | 346 | 408 | 464 | 460 | 478 | 502 | 622 | 828   | 346 | 312 |
| '14 WE | 148 | 184 | 196 | 224 | 314 | 224 | 228 | 238 | 408 | 722   | 208 | 188 |
| '15 WD | 326 | 320 | 368 | 454 | 480 | 564 | 452 | 542 | 648 | 854   | 410 | 350 |
| '15 WE | 178 | 184 | 220 | 280 | 308 | 270 | 226 | 256 | 430 | 626   | 232 | 206 |
| '16 WD | 360 | 348 |     |     |     |     |     |     |     |       |     |     |
| '16 WE | 186 | 184 |     |     |     |     |     |     |     |       |     |     |

Note: 'Weekday' defined as Monday-Friday, 'Weekend' defined as Saturday-Sunday

### Weekday/Weekend Monthly Average Daily Traffic ('12-'16)



|         | Feb-12 | Feb-13 | Feb-14 | Feb-15 | Feb-16 |
|---------|--------|--------|--------|--------|--------|
| Weekday | 316    | 426    | 320    | 320    | 348    |
| Weekend | 178    | 290    | 184    | 184    | 184    |