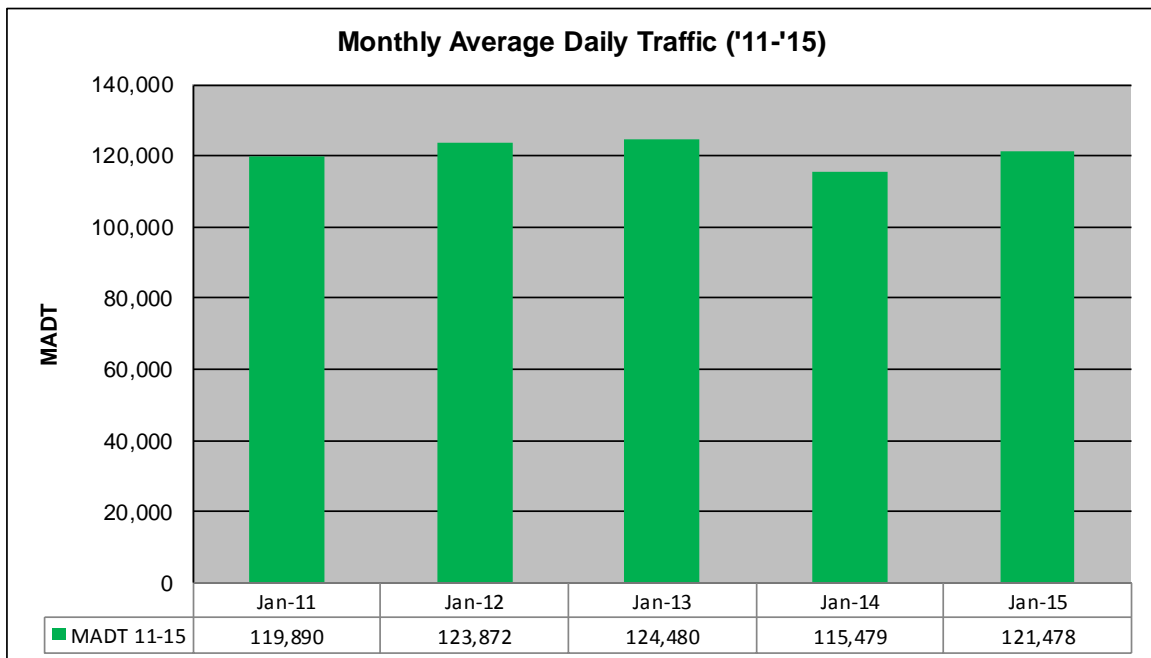
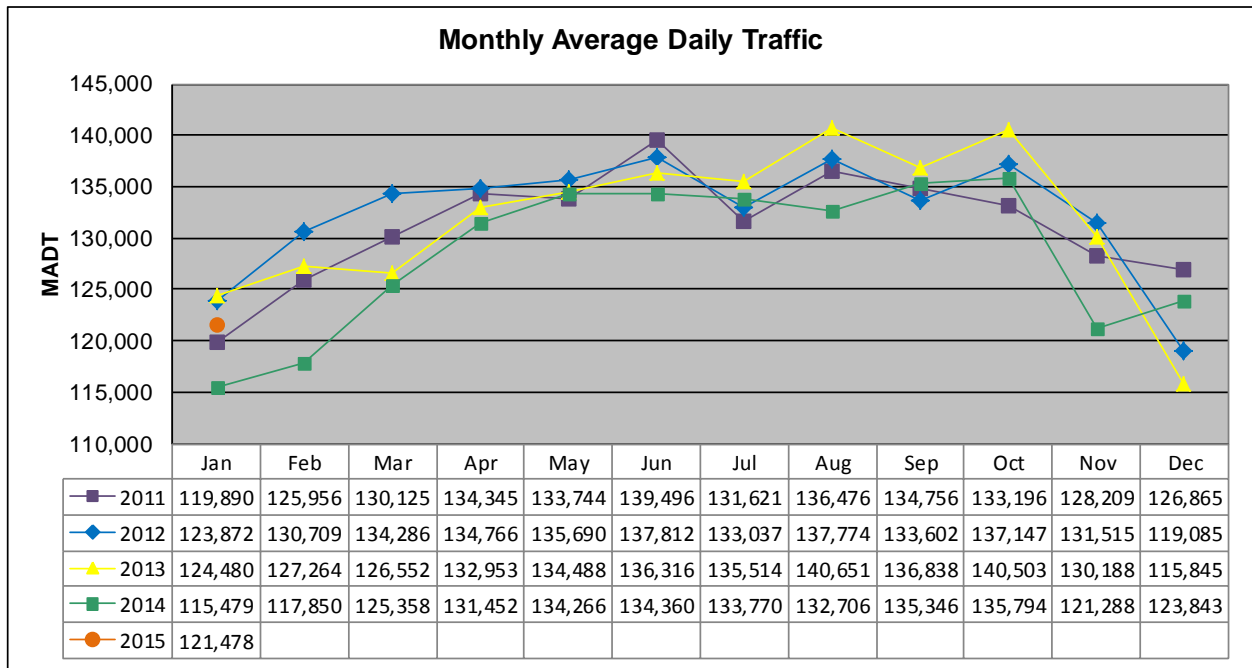


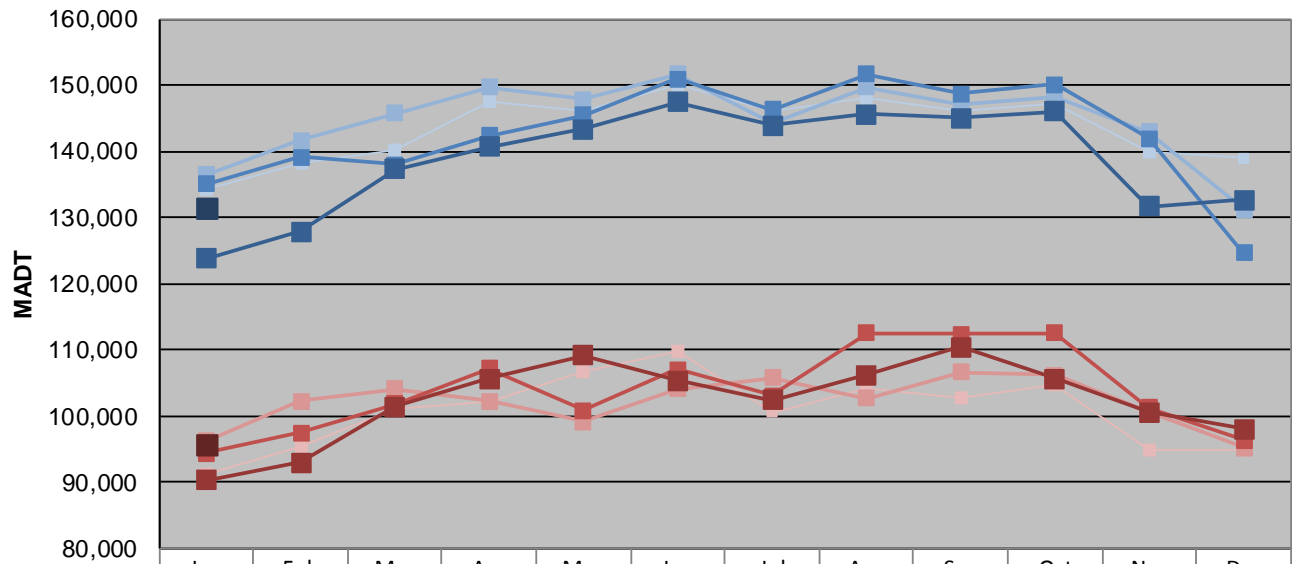
MONTHLY REPORT, STATION NO. 326 (ATR)

JANUARY 2015

| | | |
|---|----------------------|-------------------------------------|
| Station Measurement: VOLUME | | |
| Route: I-394 | Route Direction: E/W | Lanes: 6 |
| County: Hennepin | | Closest City: Minneapolis |
| Functional Class: Urban Principal Arterial - Interstate | | |
| Location: E OF TH100 IN MINNEAPOLIS | | |
| Ref Post: 007+00.250 | True Mile: 7.25 | Sequence No. 9850 |
| Volume: 3,765,824 | | MADT: 121,478 |
| Weekday (M-F) MADT: 131,562 | | Weekend (Sa-Su) MADT: 95,840 |



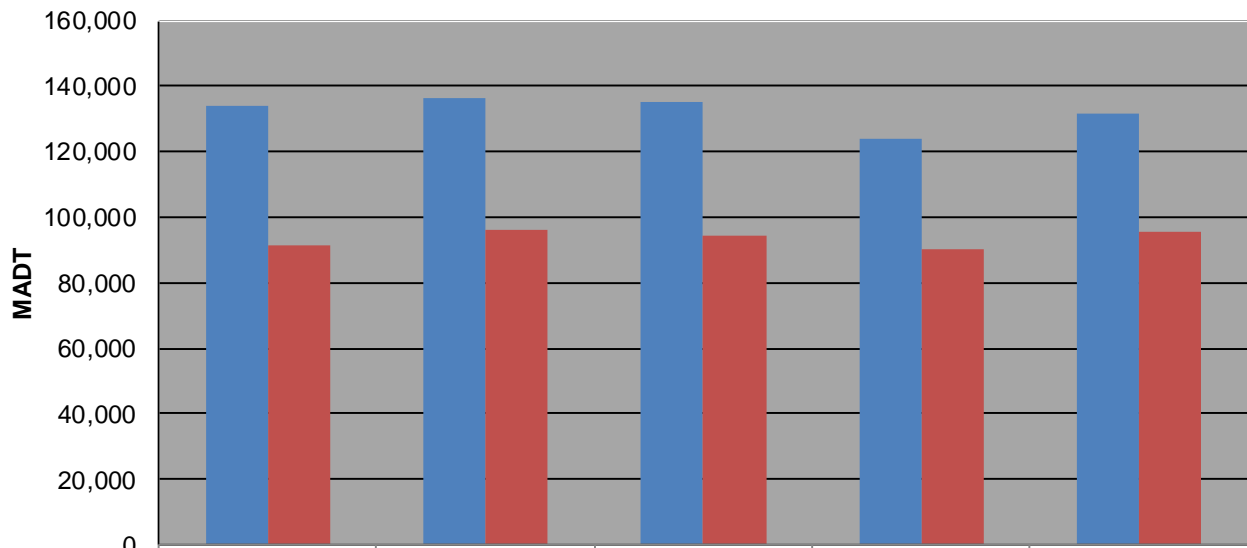
Weekday (WD)/Weekend (WE) Monthly Average Daily Traffic



| | Jan | Feb | Mar | Apr | May | Jun | Jul | Aug | Sep | Oct | Nov | Dec |
|--------|---------|---------|---------|---------|---------|---------|---------|---------|---------|---------|---------|---------|
| '11 WD | 134,220 | 138,160 | 140,194 | 147,468 | 145,970 | 150,066 | 146,210 | 148,022 | 145,974 | 147,206 | 139,768 | 138,944 |
| '11 WE | 91,298 | 95,422 | 101,116 | 102,128 | 106,656 | 109,794 | 100,622 | 104,160 | 102,790 | 104,690 | 94,884 | 94,962 |
| '12 WD | 136,510 | 141,636 | 145,738 | 149,638 | 147,806 | 151,642 | 144,296 | 149,698 | 147,118 | 148,236 | 142,940 | 131,224 |
| '12 WE | 96,174 | 102,286 | 104,094 | 102,188 | 99,112 | 104,150 | 105,762 | 102,736 | 106,570 | 106,136 | 100,654 | 95,148 |
| '13 WD | 134,976 | 139,158 | 137,954 | 142,296 | 145,442 | 150,984 | 146,278 | 151,644 | 148,730 | 150,116 | 141,942 | 124,616 |
| '13 WE | 94,342 | 97,532 | 101,784 | 107,138 | 100,908 | 106,980 | 103,032 | 112,510 | 112,348 | 112,480 | 101,206 | 96,348 |
| '14 WD | 123,722 | 127,822 | 137,244 | 140,684 | 143,392 | 147,456 | 143,966 | 145,546 | 145,064 | 146,016 | 131,682 | 132,652 |
| '14 WE | 90,302 | 92,922 | 101,338 | 105,692 | 109,168 | 105,392 | 102,412 | 106,158 | 110,372 | 105,688 | 100,502 | 98,046 |
| '15 WD | 131,562 | | | | | | | | | | | |
| '15 WE | 95,840 | | | | | | | | | | | |

Note: 'Weekday' defined as Monday-Friday, 'Weekend' defined as Saturday-Sunday

Weekday/Weekend Monthly Average Daily Traffic ('11-'15)



| | Jan-11 | Jan-12 | Jan-13 | Jan-14 | Jan-15 |
|---------|---------|---------|---------|---------|---------|
| Weekday | 134,220 | 136,510 | 134,976 | 123,722 | 131,562 |
| Weekend | 91,298 | 96,174 | 94,342 | 90,302 | 95,840 |