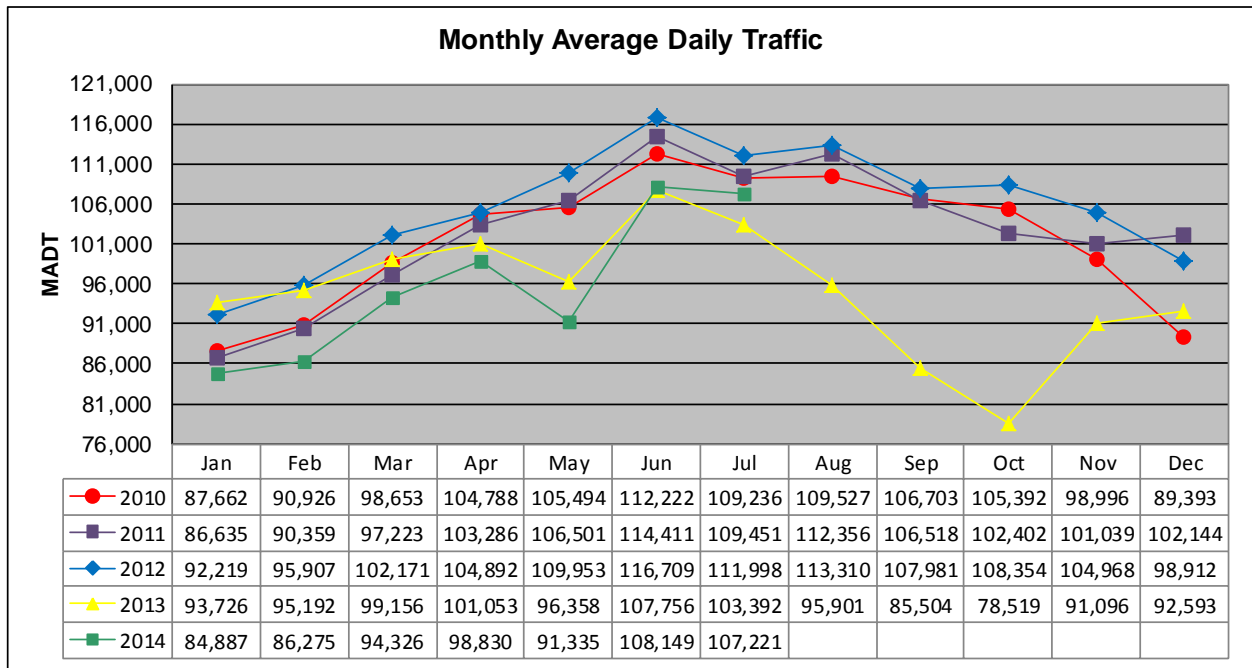


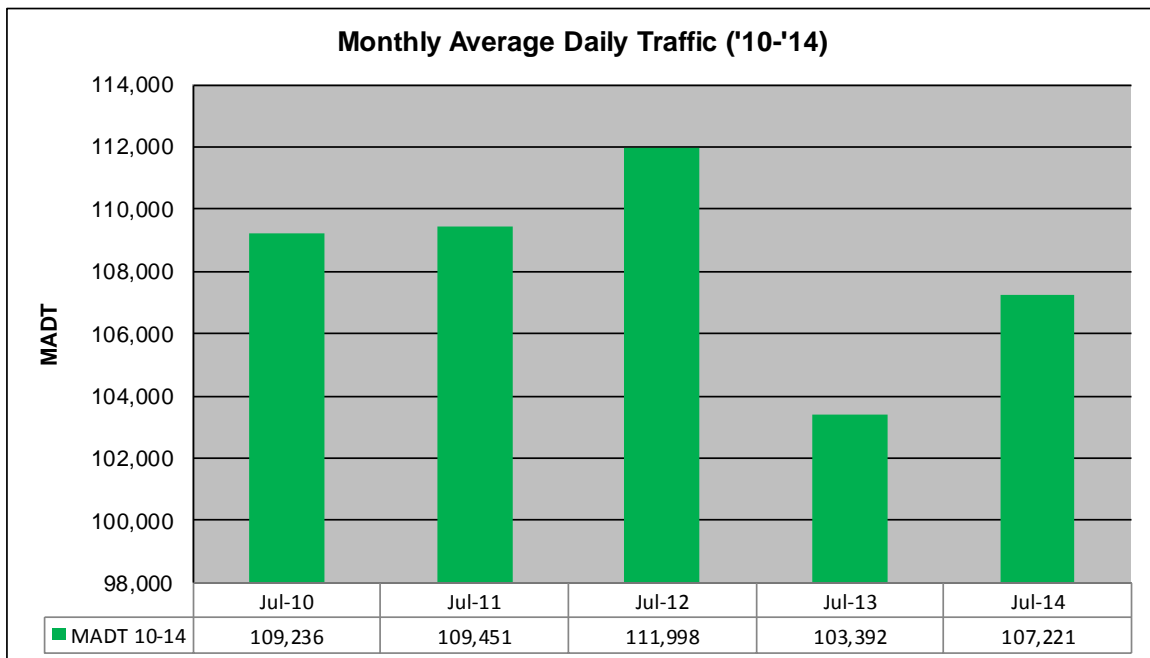
# MONTHLY REPORT, STATION NO. 305 (ATR)

## JULY 2014

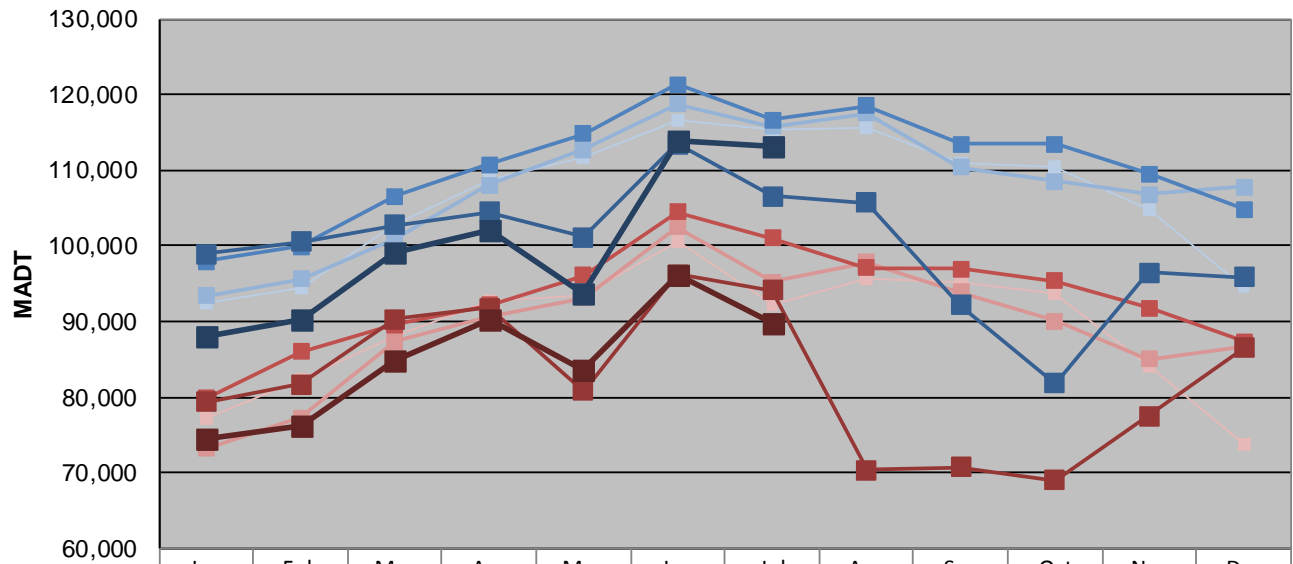
|                                                          |                      |                                     |
|----------------------------------------------------------|----------------------|-------------------------------------|
| Station Measurement: VOLUME                              |                      |                                     |
| Route: I-35                                              | Route Direction: N/S | Lanes: 6                            |
| County: Dakota                                           |                      | Closest City: Burnsville            |
| Functional Class: Urban Principal Arterial - Interstate  |                      |                                     |
| Location: S OF MSAS101 (CRYSTAL LAKE RD W) IN BURNSVILLE |                      |                                     |
| Ref Post: 087+00.070                                     | True Mile: 87.071    | Sequence No. 6786                   |
| <b>Volume: 3,323,859</b>                                 |                      | <b>MADT: 107,221</b>                |
| <b>Weekday (M-F) MADT: 113,060</b>                       |                      | <b>Weekend (Sa-Su) MADT: 89,686</b> |



Note: Decrease in traffic May and August to November 2013 and May 2014 due to construction on I-35



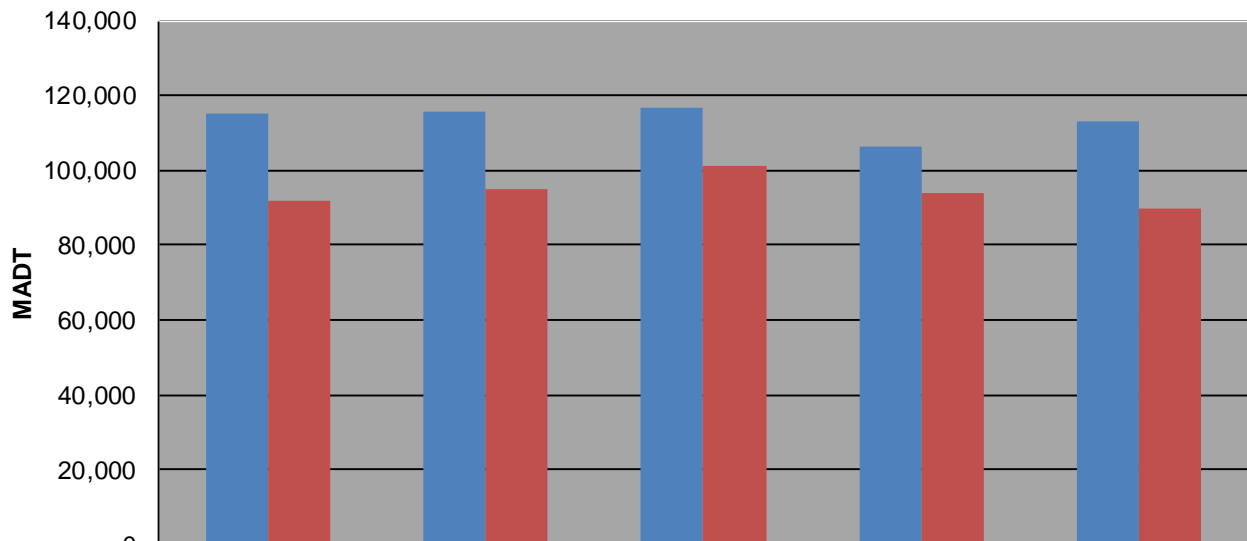
### Weekday (WD)/Weekend (WE) Monthly Average Daily Traffic



|        | Jan    | Feb     | Mar     | Apr     | May     | Jun     | Jul     | Aug     | Sep     | Oct     | Nov     | Dec     |
|--------|--------|---------|---------|---------|---------|---------|---------|---------|---------|---------|---------|---------|
| '10 WD | 92,534 | 94,348  | 102,762 | 108,666 | 111,702 | 116,642 | 115,386 | 115,702 | 110,844 | 110,462 | 104,720 | 94,494  |
| '10 WE | 77,132 | 82,372  | 88,102  | 92,818  | 93,458  | 100,666 | 92,092  | 95,742  | 95,186  | 93,590  | 84,208  | 73,664  |
| '11 WD | 93,408 | 95,590  | 100,988 | 108,070 | 112,728 | 118,724 | 115,826 | 117,566 | 110,418 | 108,550 | 106,794 | 107,740 |
| '11 WE | 73,206 | 77,256  | 87,314  | 90,664  | 93,156  | 102,436 | 95,216  | 97,874  | 93,868  | 90,038  | 85,042  | 86,796  |
| '12 WD | 97,988 | 99,894  | 106,554 | 110,782 | 114,830 | 121,282 | 116,682 | 118,538 | 113,474 | 113,400 | 109,540 | 104,852 |
| '12 WE | 79,844 | 85,936  | 89,506  | 92,208  | 96,068  | 104,510 | 101,008 | 97,022  | 96,996  | 95,296  | 91,766  | 87,292  |
| '13 WD | 98,932 | 100,570 | 102,750 | 104,472 | 101,158 | 113,510 | 106,570 | 105,680 | 92,132  | 81,766  | 96,420  | 95,848  |
| '13 WE | 79,354 | 81,746  | 90,282  | 91,828  | 80,794  | 96,250  | 94,072  | 70,360  | 70,708  | 68,998  | 77,560  | 86,486  |
| '14 WD | 88,080 | 90,318  | 99,136  | 102,146 | 93,668  | 113,796 | 113,060 |         |         |         |         |         |
| '14 WE | 74,490 | 76,166  | 84,924  | 90,248  | 83,490  | 96,168  | 89,686  |         |         |         |         |         |

Note: 'Weekday' defined as Monday-Friday, 'Weekend' defined as Saturday-Sunday

### Weekday/Weekend Monthly Average Daily Traffic ('10-'14)



|         | Jul-10  | Jul-11  | Jul-12  | Jul-13  | Jul-14  |
|---------|---------|---------|---------|---------|---------|
| Weekday | 115,386 | 115,826 | 116,682 | 106,570 | 113,060 |
| Weekend | 92,092  | 95,216  | 101,008 | 94,072  | 89,686  |