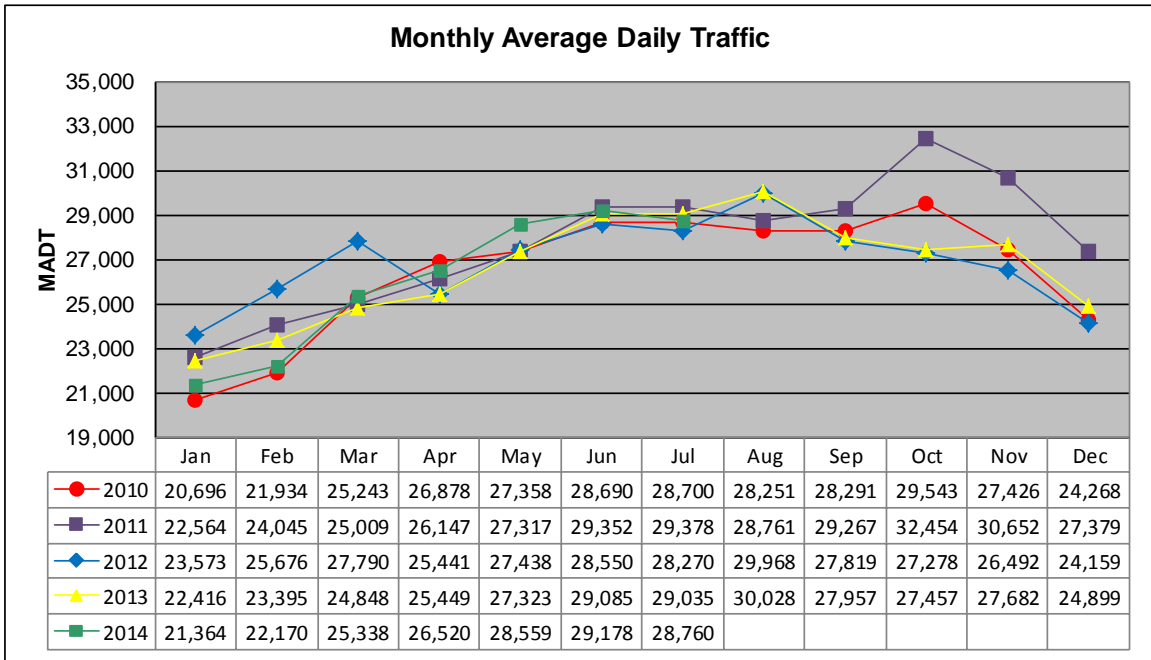


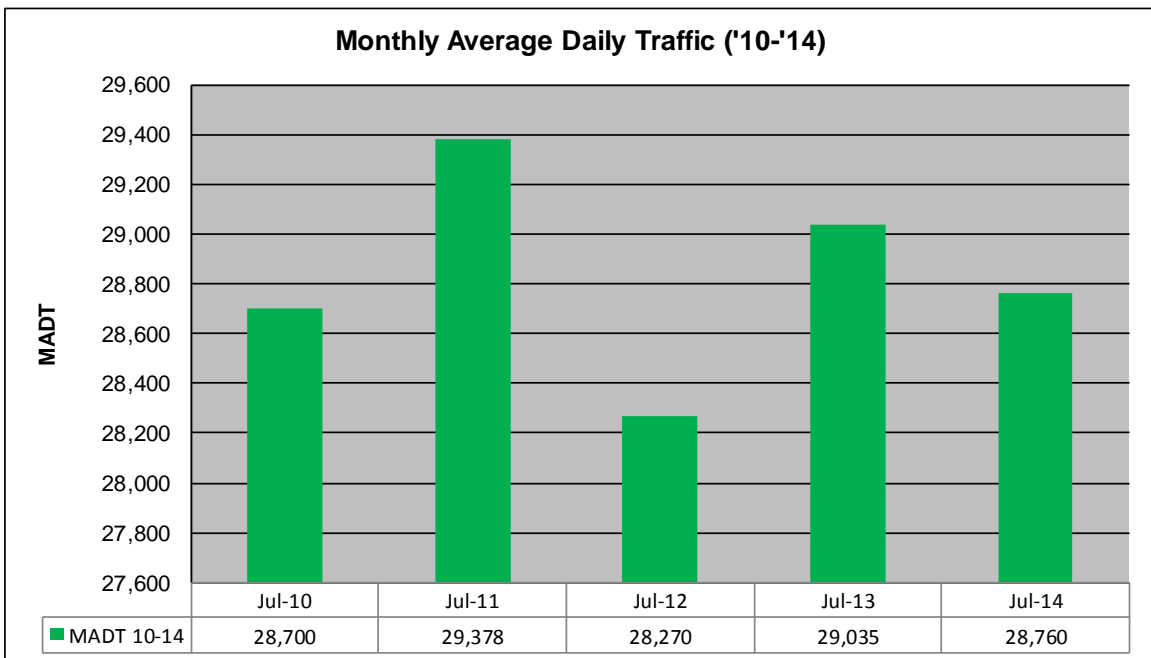
# MONTHLY REPORT, STATION NO. 32 (WIM)

## JULY 2014

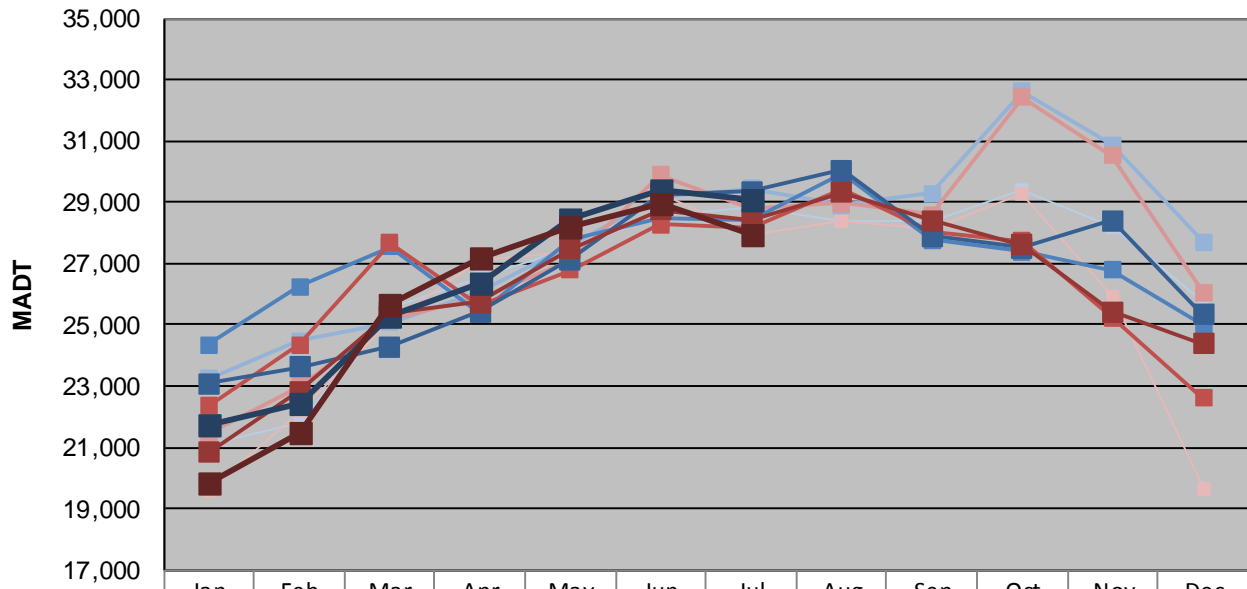
|  |                       |                                     |
|--|-----------------------|-------------------------------------|
| Station Measurement: VOLUME/SPEED/CLASS                  |                       |                                     |
| Route: TH 52   | Route Direction: N/S  | Lanes: 4                            |
| County: Olmsted  | Closest City: Oronoco |                                     |
| Functional Class: Rural Principal Arterial - Other       |                       |                                     |
| Location: .25 MI N OF CSAH12 (100TH ST NW), S OF ORONOCO |                       |                                     |
| Ref Post: 066+00.000                                     | True Mile: 65.344     | Sequence No. 67740                  |
| <b>Volume: 891,564</b>                                   |                       | <b>MADT: 28,760</b>                 |
| <b>Weekday (M-F) MADT: 29,064</b>                        |                       | <b>Weekend (Sa-Su) MADT: 27,920</b> |



Note: Volume data reported as ATR 188 from 2010-2012



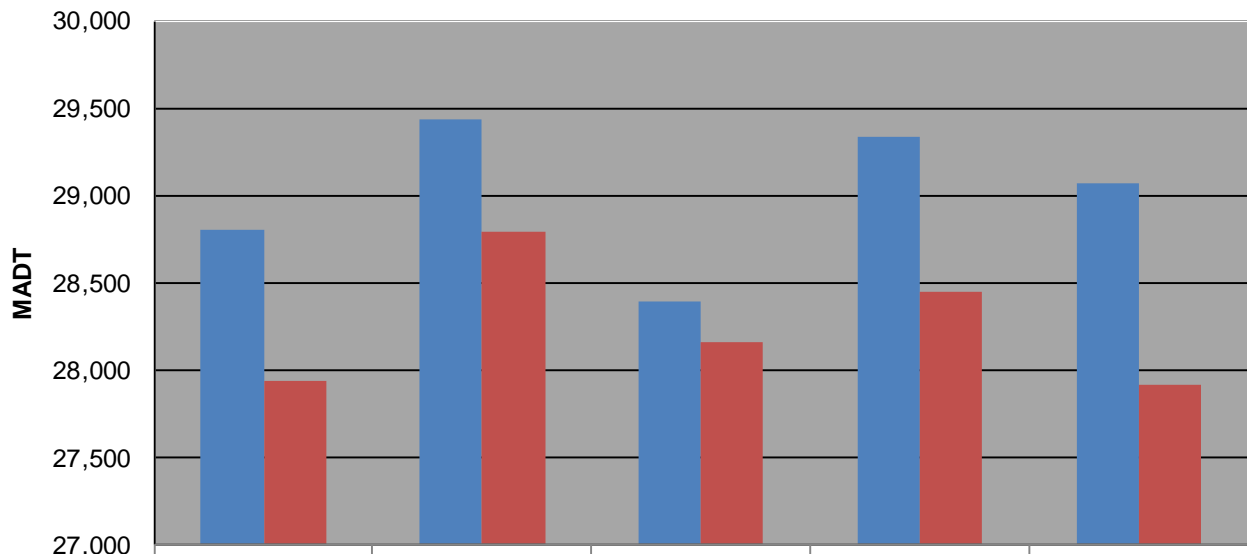
### Weekday (WD)/Weekend (WE) Monthly Average Daily Traffic



|        | Jan    | Feb    | Mar    | Apr    | May    | Jun    | Jul    | Aug    | Sep    | Oct    | Nov    | Dec    |
|--------|--------|--------|--------|--------|--------|--------|--------|--------|--------|--------|--------|--------|
| '10 WD | 21,126 | 21,824 | 25,526 | 26,556 | 27,474 | 28,608 | 28,800 | 28,358 | 28,366 | 29,426 | 28,192 | 25,754 |
| '10 WE | 19,598 | 22,208 | 25,098 | 27,126 | 27,344 | 29,292 | 27,934 | 28,416 | 28,160 | 29,260 | 25,900 | 19,616 |
| '11 WD | 23,234 | 24,474 | 25,084 | 26,060 | 27,626 | 29,196 | 29,440 | 28,924 | 29,274 | 32,602 | 30,862 | 27,704 |
| '11 WE | 21,430 | 22,976 | 25,184 | 25,878 | 27,100 | 29,878 | 28,796 | 28,982 | 28,580 | 32,418 | 30,516 | 26,058 |
| '12 WD | 24,342 | 26,264 | 27,536 | 25,404 | 27,774 | 28,452 | 28,394 | 29,968 | 27,768 | 27,384 | 26,774 | 24,994 |
| '12 WE | 22,346 | 24,352 | 27,666 | 25,614 | 26,792 | 28,276 | 28,164 | 29,460 | 28,040 | 27,726 | 25,226 | 22,604 |
| '13 WD | 23,074 | 23,618 | 24,288 | 25,430 | 27,142 | 29,256 | 29,338 | 30,052 | 27,896 | 27,530 | 28,412 | 25,322 |
| '13 WE | 20,842 | 22,836 | 25,392 | 25,736 | 27,494 | 28,744 | 28,450 | 29,336 | 28,408 | 27,626 | 25,428 | 24,388 |
| '14 WD | 21,706 | 22,448 | 25,264 | 26,382 | 28,432 | 29,384 | 29,064 |        |        |        |        |        |
| '14 WE | 19,818 | 21,478 | 25,690 | 27,198 | 28,210 | 28,974 | 27,920 |        |        |        |        |        |

Note: 'Weekday' defined as Monday-Friday, 'Weekend' defined as Saturday-Sunday

### Weekday/Weekend Monthly Average Daily Traffic ('10-'14)



|         | Jul-10 | Jul-11 | Jul-12 | Jul-13 | Jul-14 |
|---------|--------|--------|--------|--------|--------|
| Weekday | 28,800 | 29,440 | 28,394 | 29,338 | 29,064 |
| Weekend | 27,934 | 28,796 | 28,164 | 28,450 | 27,920 |