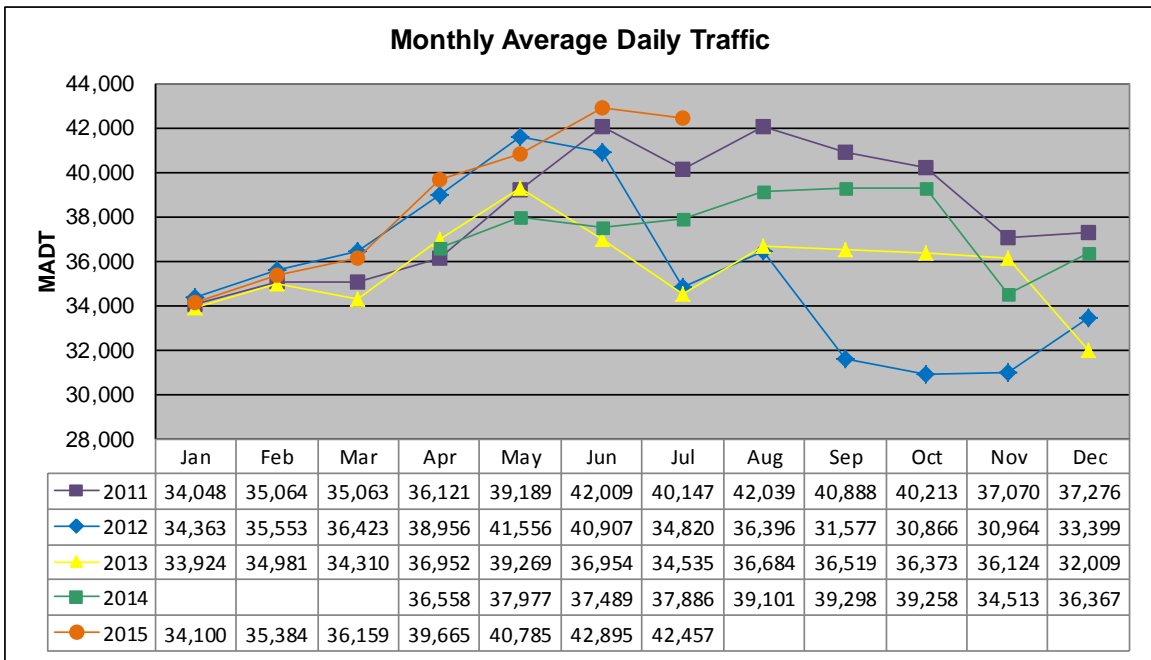


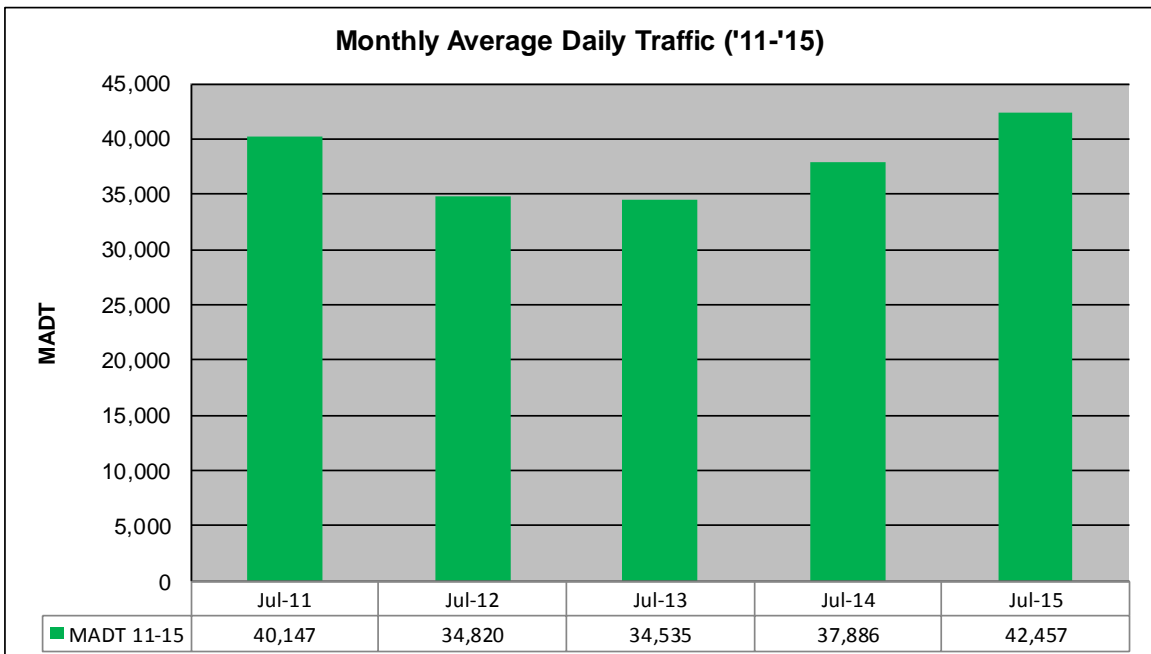
# MONTHLY REPORT, STATION NO. 36 (WIM)

## JULY 2015

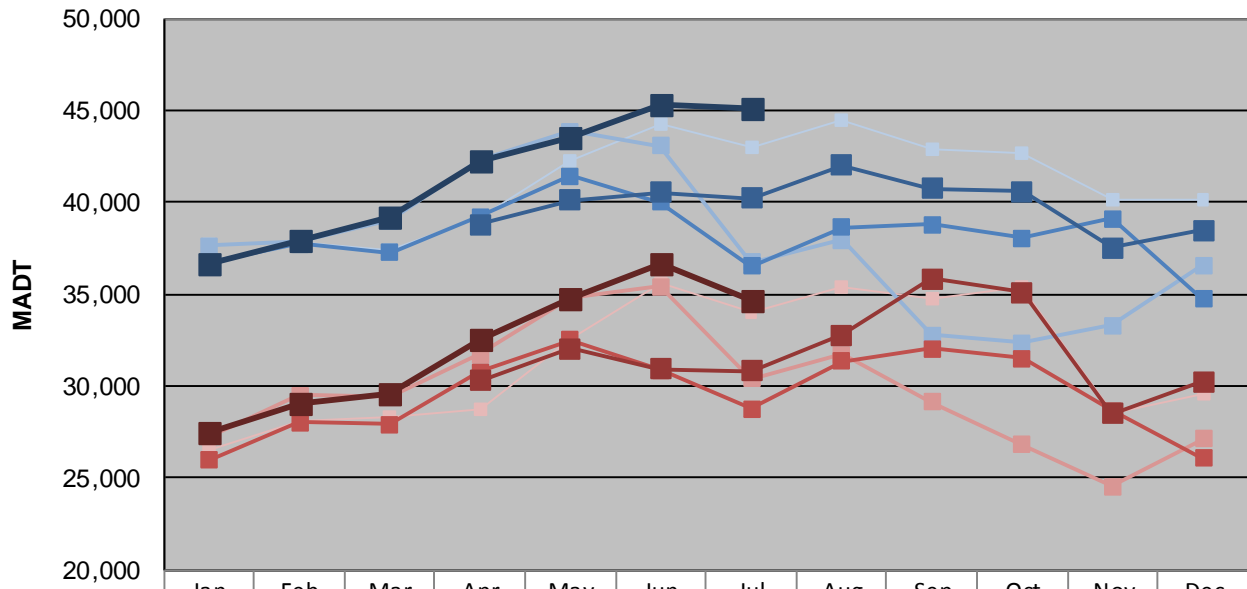
Station Measurement: VOLUME/SPEED/CLASS/WEIGHT		
Route: TH 36	Route Direction: E/W	Lanes: 4
County: Washington		Closest City: Lake Elmo
Functional Class: Urban Other Principal Arterial		
Location: .7 MI W OF CSAH17 (LAKE ELMO AVE N) IN LAKE ELMO		
Ref Post: 014+00.983	True Mile: 15.022	Sequence No. 10237
<b>Volume: 1,316,163</b>		<b>MADT: 42,457</b>
<b>Weekday (M-F) MADT: 45,064</b>		<b>Weekend (Sa-Su) MADT: 34,628</b>



Note: Decrease in traffic July to November 2012 and June to October 2013 due to construction on TH 36... Increase in traffic June/July 2015 due to detours... No data January to March 2014 due to site communication issues



### Weekday (WD)/Weekend (WE) Monthly Average Daily Traffic



Note: 'Weekday' defined as Monday-Friday, 'Weekend' defined as Saturday-Sunday

### Weekday/Weekend Monthly Average Daily Traffic ('11-'15)

