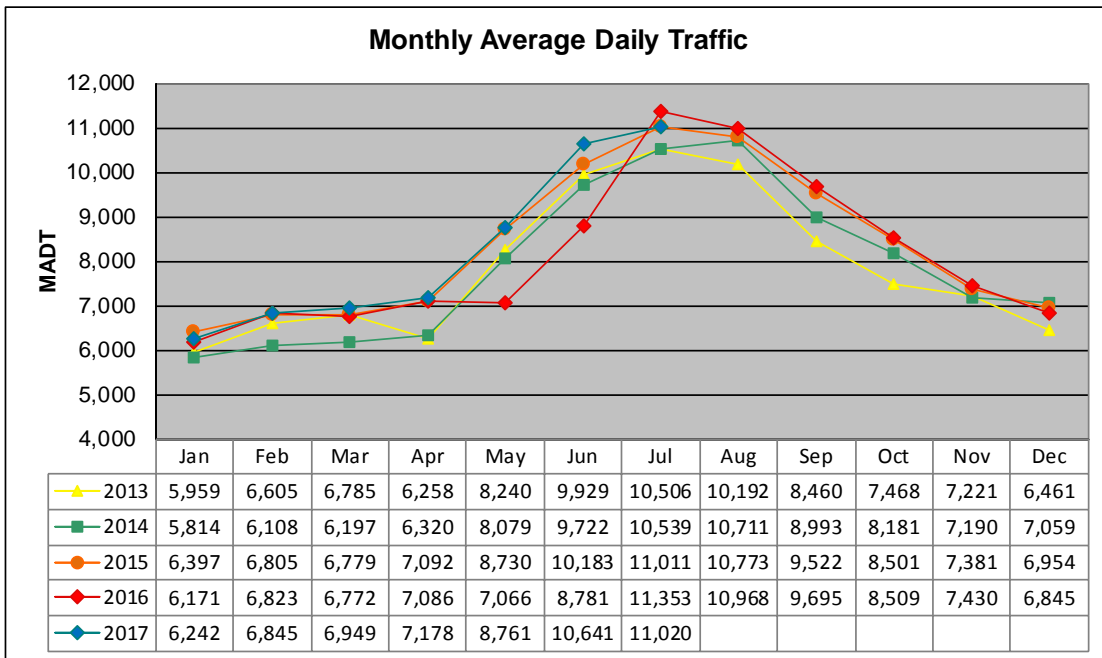


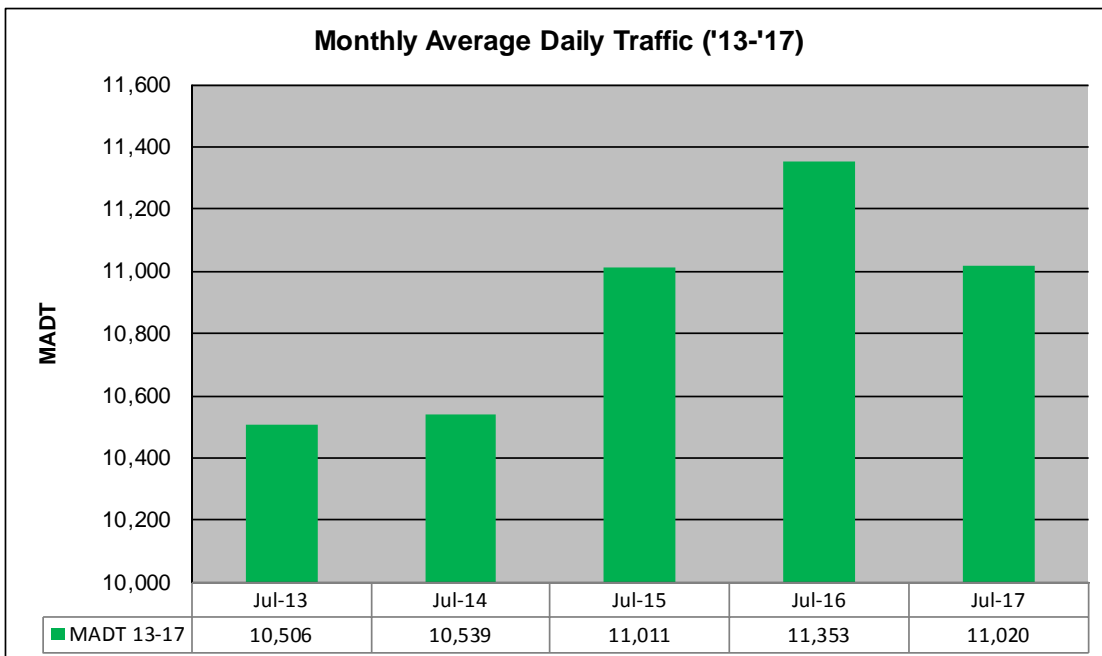
MONTHLY REPORT, STATION NO. 29 (WIM)

JULY 2017

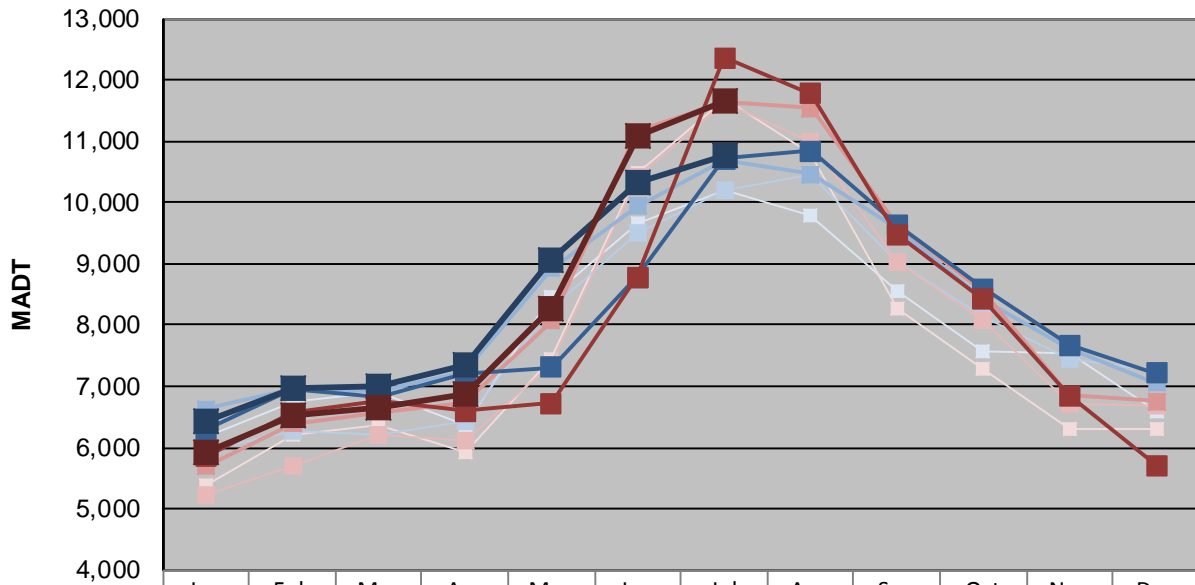
Station Measurement: VOLUME/SPEED/CLASS/WEIGHT		
Route: TH 53	Route Direction: N/S	Lanes: 4
County: St Louis	Closest City: Eveleth	
Functional Class: Rural Principal Arterial - Other		
Location: 3 MI S OF CSAH59 (MELRUDE RD), S OF EVELETH		
Ref Post: 042+00.100	True Mile: 42.218	Sequence No. 6763
Volume: 341,612		MADT: 11,020
Weekday (M-F) MADT: 10,770		Weekend (Sa-Su) MADT: 11,652



Note: Decrease in traffic May/June 2016 due to construction on TH 53



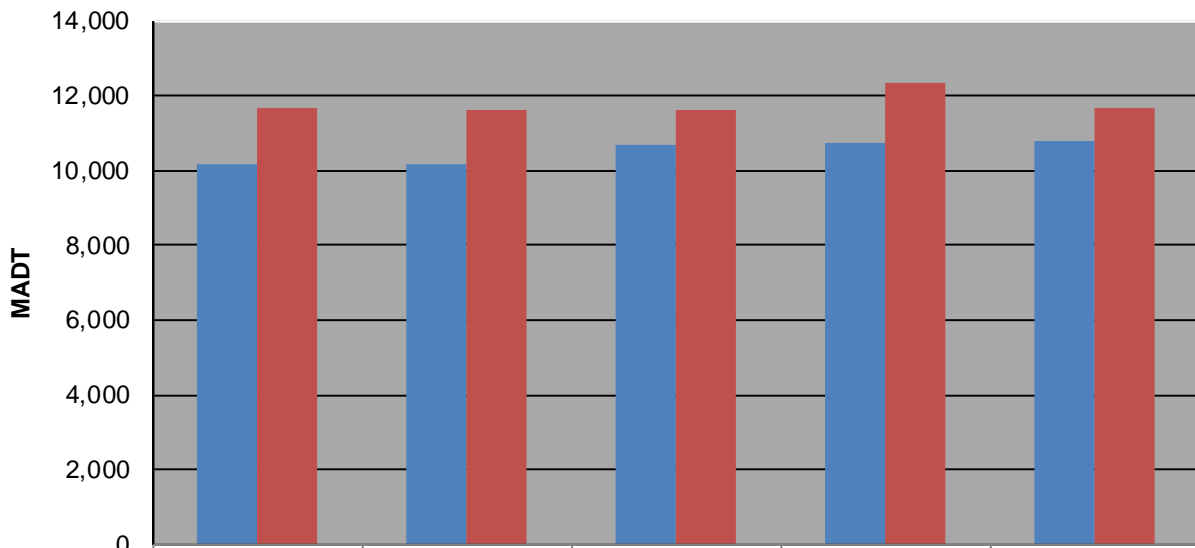
Weekday (WD)/Weekend (WE) Monthly Average Daily Traffic



	Jan	Feb	Mar	Apr	May	Jun	Jul	Aug	Sep	Oct	Nov	Dec
'13 WD	6,186	6,764	6,902	6,384	8,460	9,646	10,192	9,788	8,558	7,574	7,534	6,588
'13 WE	5,390	6,208	6,378	5,912	7,460	10,496	11,694	10,800	8,264	7,300	6,318	6,296
'14 WD	5,972	6,270	6,210	6,434	8,262	9,518	10,196	10,440	9,044	8,146	7,434	7,246
'14 WE	5,214	5,706	6,224	6,112	7,360	10,414	11,624	10,988	9,034	8,092	6,702	6,680
'15 WD	6,630	6,966	6,916	7,234	8,932	9,938	10,682	10,458	9,590	8,416	7,626	7,058
'15 WE	5,700	6,400	6,586	6,728	8,076	11,156	11,638	11,538	9,646	8,542	6,848	6,750
'16 WD	6,286	6,946	6,832	7,220	7,312	8,776	10,718	10,836	9,640	8,590	7,676	7,210
'16 WE	5,852	6,574	6,750	6,598	6,720	8,790	12,354	11,770	9,486	8,426	6,858	5,706
'17 WD	6,432	6,978	7,008	7,336	9,056	10,316	10,770					
'17 WE	5,932	6,512	6,660	6,862	8,258	11,090	11,652					

Note: 'Weekday' defined as Monday-Friday, 'Weekend' defined as Saturday-Sunday

Weekday/Weekend Monthly Average Daily Traffic ('13-'17)



	Jul-13	Jul-14	Jul-15	Jul-16	Jul-17
Weekday	10,192	10,196	10,682	10,718	10,770
Weekend	11,694	11,624	11,638	12,354	11,652