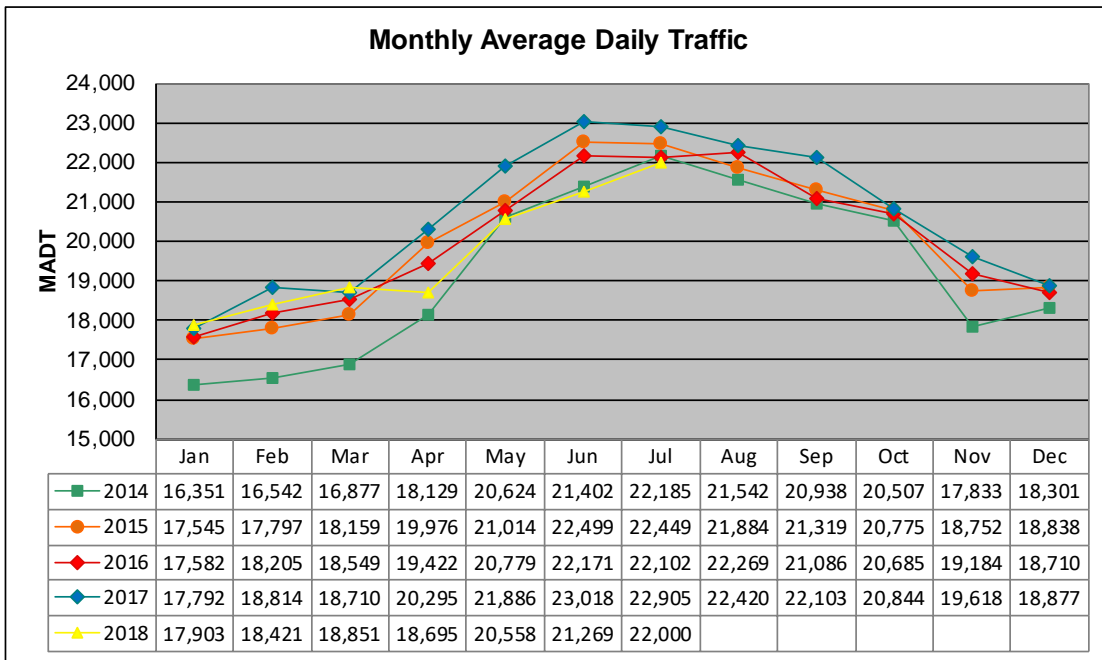


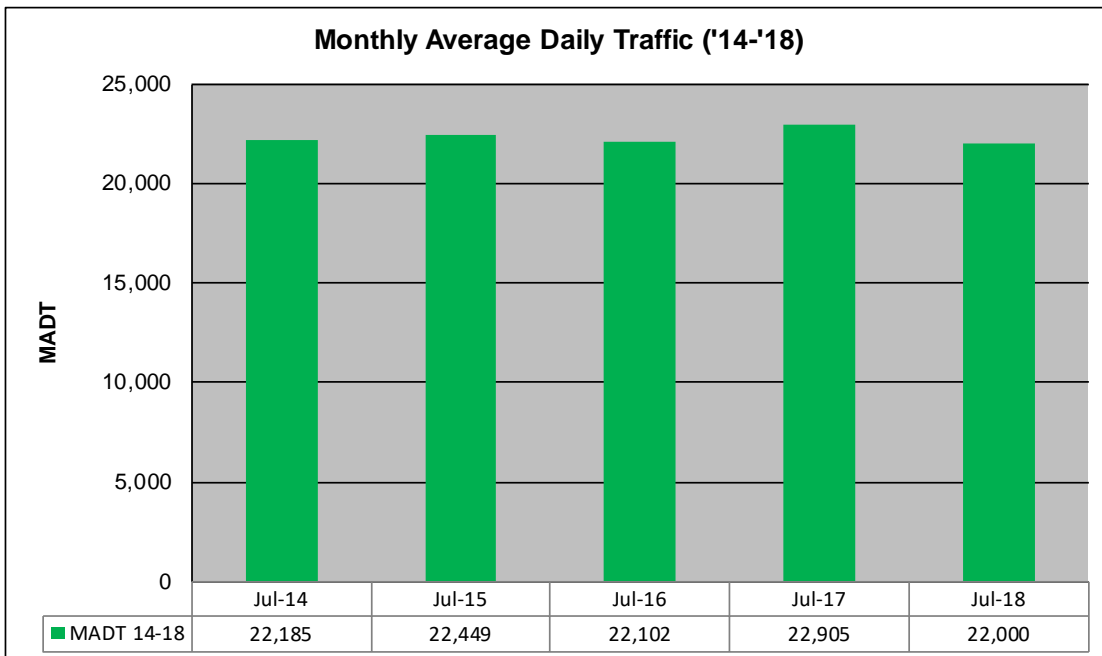
MONTHLY REPORT, STATION NO. 388 (ATR)

JULY 2018

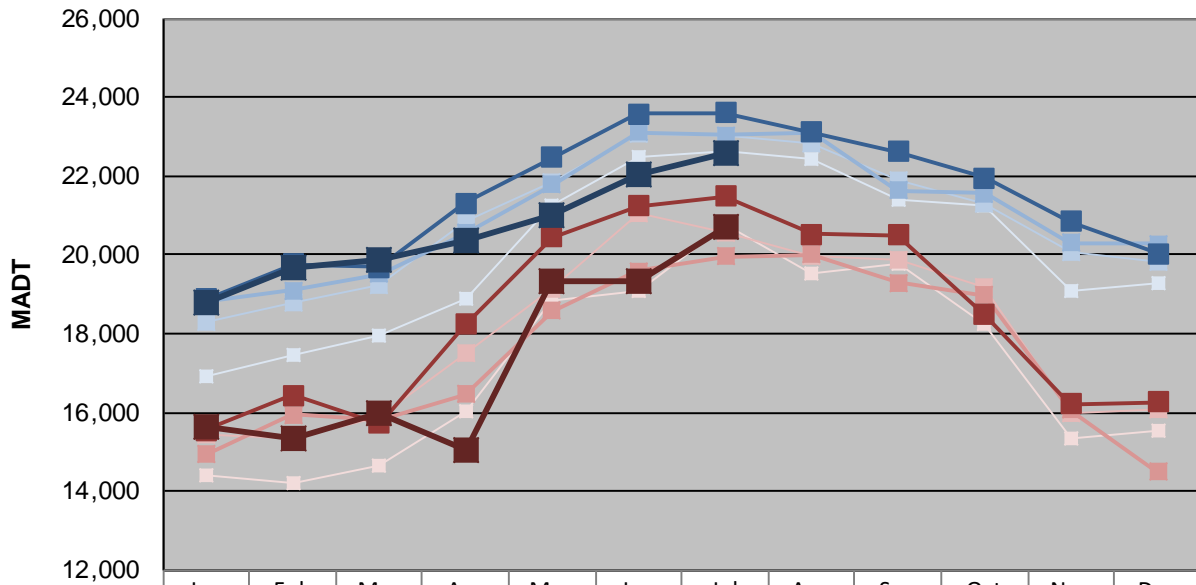
Station Measurement: VOLUME/SPEED/CLASS		
Route: TH 8	Route Direction: N/S	Lanes: 2
County: Chisago		Closest City: Forest Lake
Functional Class: Urban Other Principal Arterial		
Location: E OF MSAS121 (GREENWAY RD), N OF FOREST LAKE		
Ref Post: 002+00.330	True Mile: 2.282	Sequence No. 6783
Volume: 681,997		MADT: 22,000
Weekday (M-F) MADT: 22,560		Weekend (Sa-Su) MADT: 20,710



Note: Increase in traffic July to September 2014 due to detour from TH 61



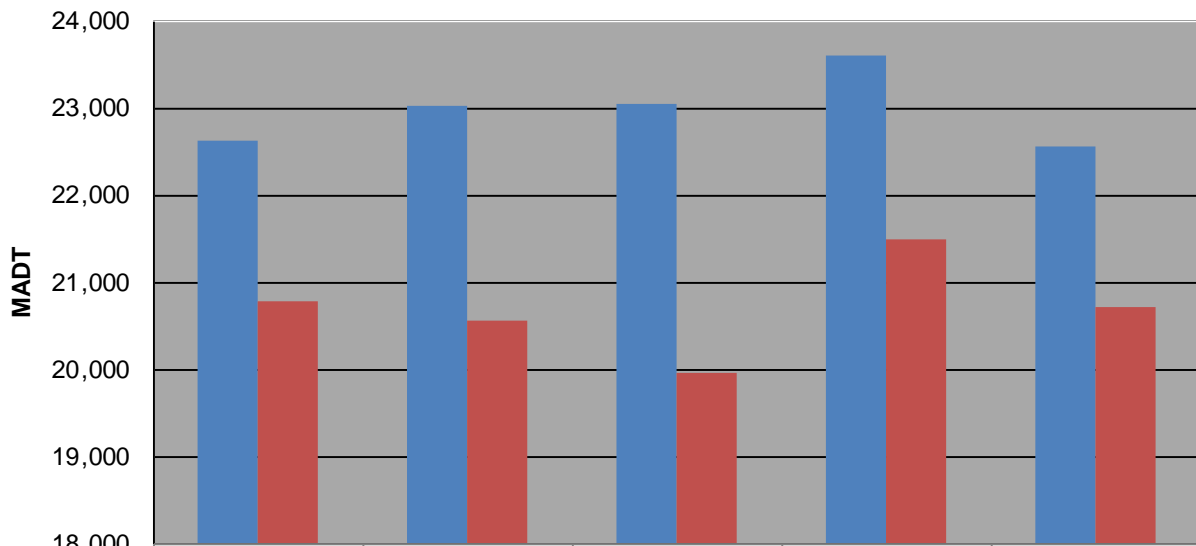
Weekday (WD)/Weekend (WE) Monthly Average Daily Traffic



	Jan	Feb	Mar	Apr	May	Jun	Jul	Aug	Sep	Oct	Nov	Dec
'14 WD	16,928	17,478	17,956	18,902	21,238	22,506	22,626	22,430	21,418	21,230	19,070	19,268
'14 WE	14,390	14,202	14,656	16,012	18,826	19,062	20,778	19,548	19,772	18,264	15,356	15,534
'15 WD	18,280	18,784	19,222	20,876	21,818	23,062	23,024	22,826	21,882	21,306	20,050	19,800
'15 WE	15,458	15,332	15,878	17,498	19,152	21,066	20,572	19,990	19,894	19,202	15,962	16,068
'16 WD	18,836	19,092	19,510	20,558	21,786	23,102	23,046	23,098	21,640	21,548	20,308	20,286
'16 WE	14,932	15,934	15,814	16,464	18,576	19,592	19,954	20,010	19,298	18,972	16,072	14,492
'17 WD	18,878	19,766	19,694	21,324	22,476	23,580	23,608	23,110	22,626	21,948	20,856	20,038
'17 WE	15,550	16,438	15,722	18,240	20,444	21,240	21,486	20,524	20,504	18,478	16,224	16,254
'18 WD	18,776	19,662	19,858	20,354	20,996	22,058	22,560					
'18 WE	15,614	15,320	15,972	15,032	19,312	19,306	20,710					

Note: 'Weekday' defined as Monday-Friday, 'Weekend' defined as Saturday-Sunday

Weekday/Weekend Monthly Average Daily Traffic ('14-'18)



	Jul-14	Jul-15	Jul-16	Jul-17	Jul-18
Weekday	22,626	23,024	23,046	23,608	22,560
Weekend	20,778	20,572	19,954	21,486	20,710