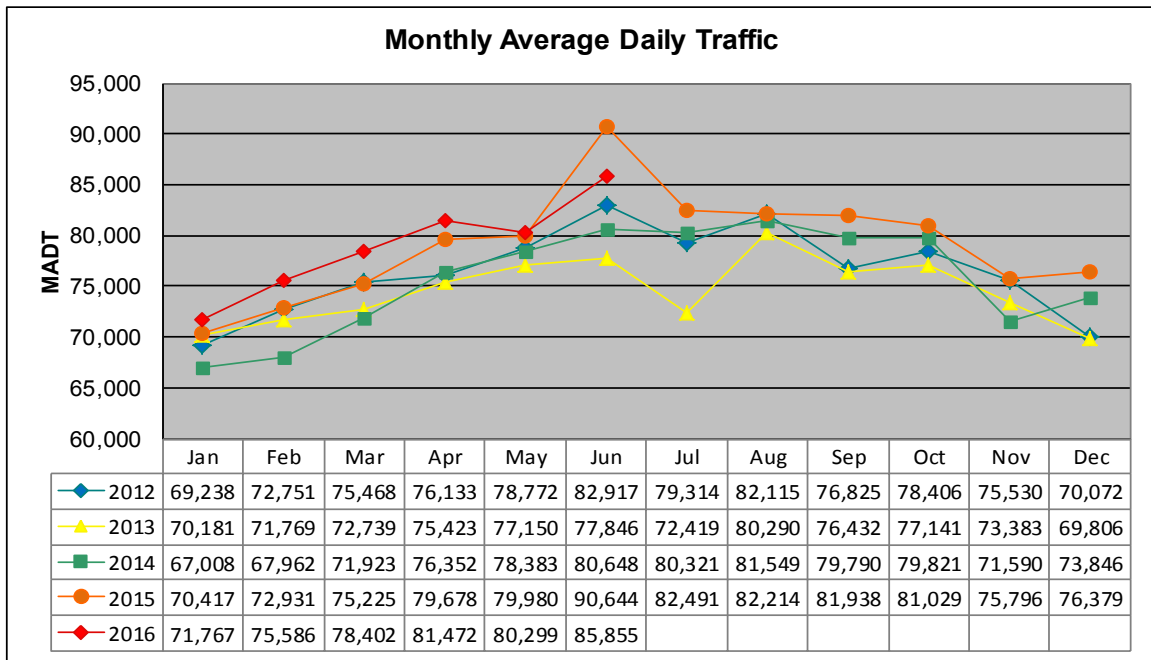


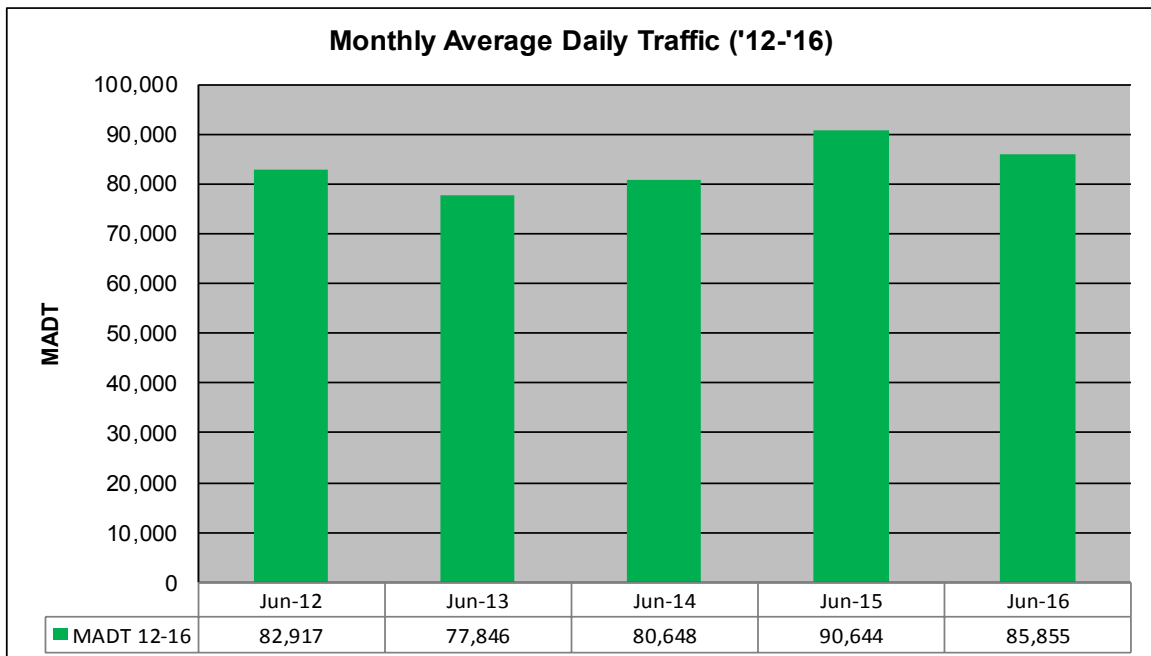
MONTHLY REPORT, STATION NO. 336 (ATR)

JUNE 2016

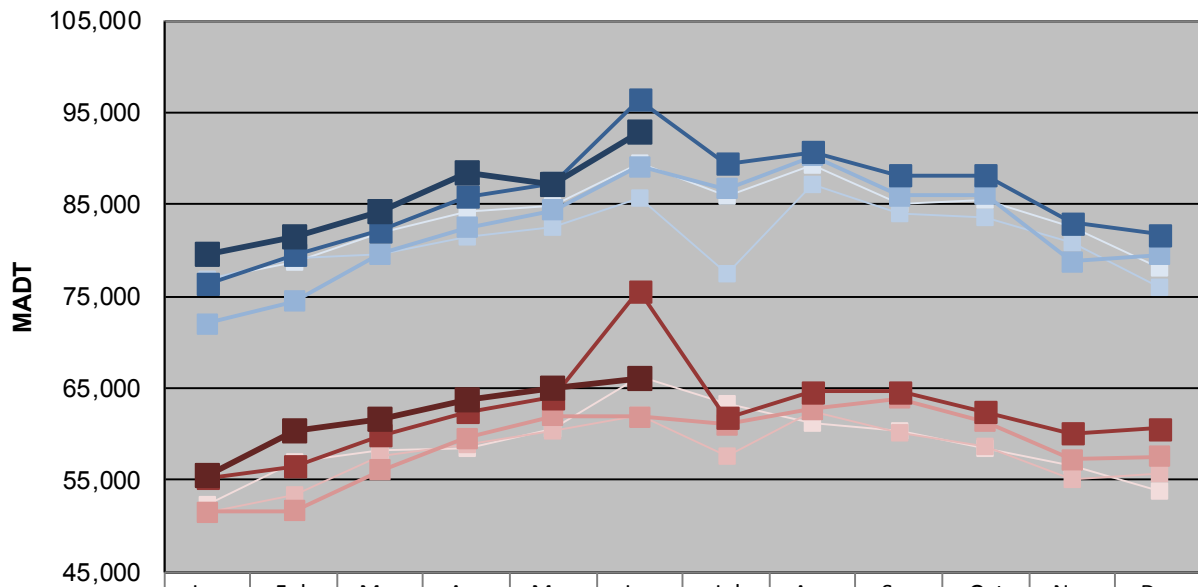
Station Measurement: VOLUME		
Route: I-35E	Route Direction: N/S	Lanes: 6
County: Dakota		Closest City: Eagan
Functional Class: Urban Principal Arterial - Interstate		
Location: N OF MSAS102 (DEERWOOD DR) IN EAGAN		
Ref Post: 095+00.422	True Mile: 95.48	Sequence No. 9854
Volume: 2,575,661		MADT: 85,855
Weekday (M-F) MADT: 92,956		Weekend (Sa-Su) MADT: 66,034



Note: Decrease in traffic June/July 2013 due to construction on I-35E... Increase in traffic June 2015 due to detour from MN 77



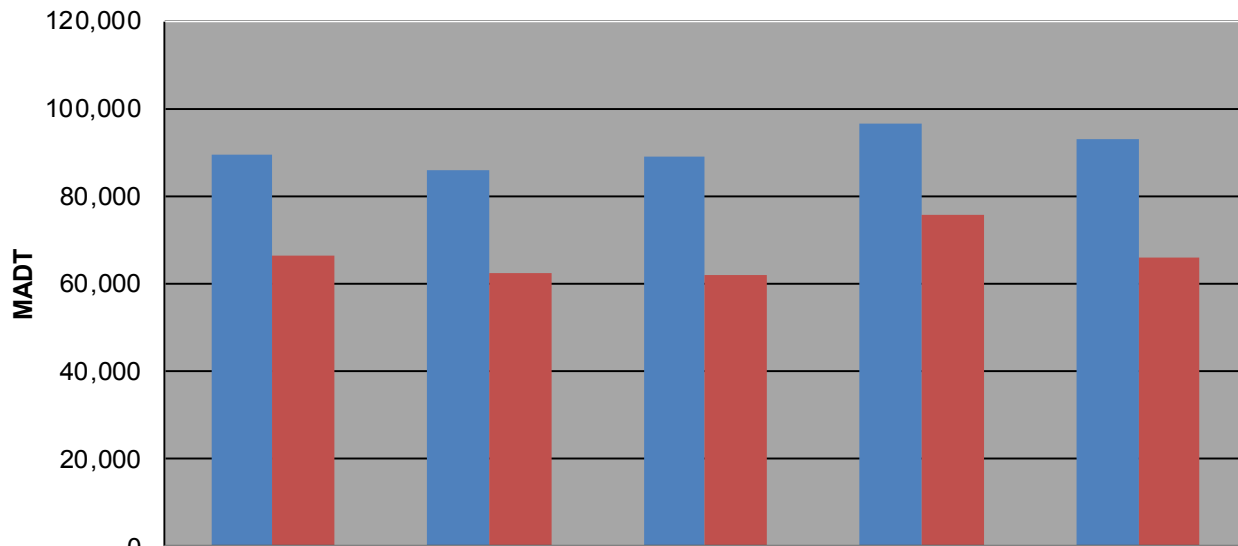
Weekday (WD)/Weekend (WE) Monthly Average Daily Traffic



	Jan	Feb	Mar	Apr	May	Jun	Jul	Aug	Sep	Oct	Nov	Dec
'12 WD	76,764	78,812	81,904	84,140	84,920	89,596	85,984	89,204	85,056	85,552	82,520	78,184
'12 WE	52,444	57,056	58,334	58,418	60,606	66,374	63,320	61,112	60,364	58,478	56,528	53,726
'13 WD	76,776	79,098	79,624	81,418	82,600	85,692	77,412	87,246	84,058	83,556	80,846	76,074
'13 WE	51,538	53,446	57,634	58,958	60,290	62,154	57,608	62,412	60,166	58,710	55,146	55,652
'14 WD	72,026	74,480	79,634	82,506	84,428	89,130	86,714	90,340	85,944	86,024	78,768	79,486
'14 WE	51,572	51,670	56,130	59,578	61,984	61,874	61,030	62,772	63,922	61,356	57,234	57,578
'15 WD	76,344	79,494	82,148	85,896	87,284	96,400	89,486	90,760	88,172	88,152	83,028	81,786
'15 WE	55,232	56,522	59,934	62,454	64,036	75,662	61,752	64,604	64,612	62,438	60,116	60,608
'16 WD	79,584	81,526	84,284	88,534	87,162	92,956						
'16 WE	55,538	60,382	61,658	63,772	65,018	66,034						

Note: 'Weekday' defined as Monday-Friday, 'Weekend' defined as Saturday-Sunday

Weekday/Weekend Monthly Average Daily Traffic ('12-'16)



	Jun-12	Jun-13	Jun-14	Jun-15	Jun-16
Weekday	89,596	85,692	89,130	96,400	92,956
Weekend	66,374	62,154	61,874	75,662	66,034