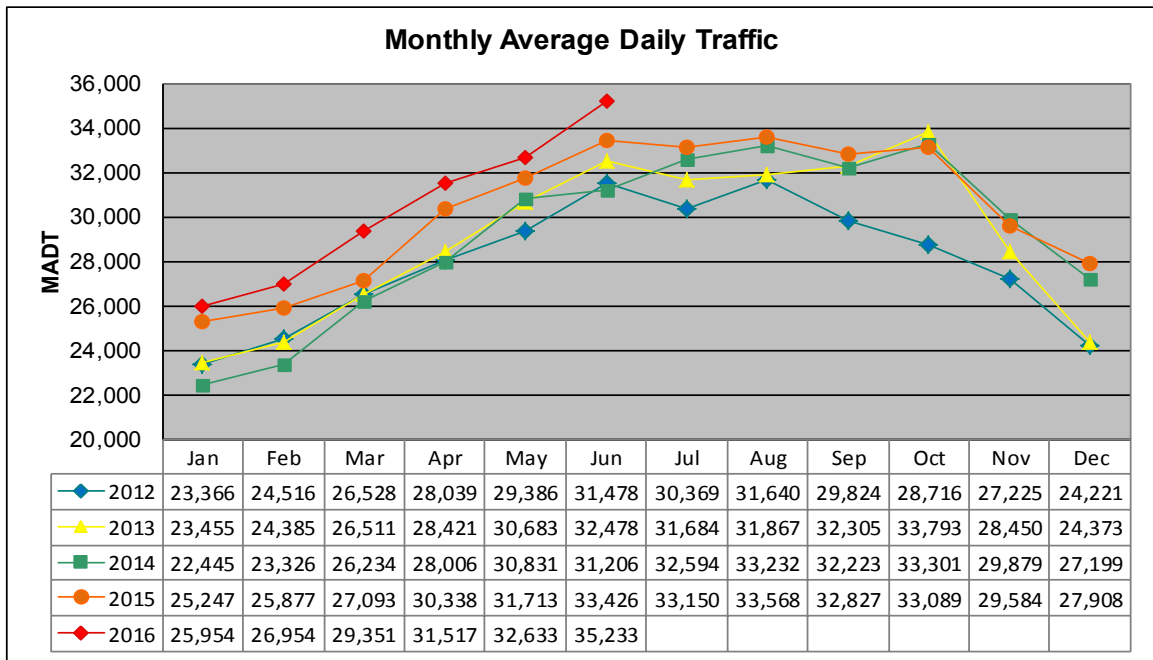


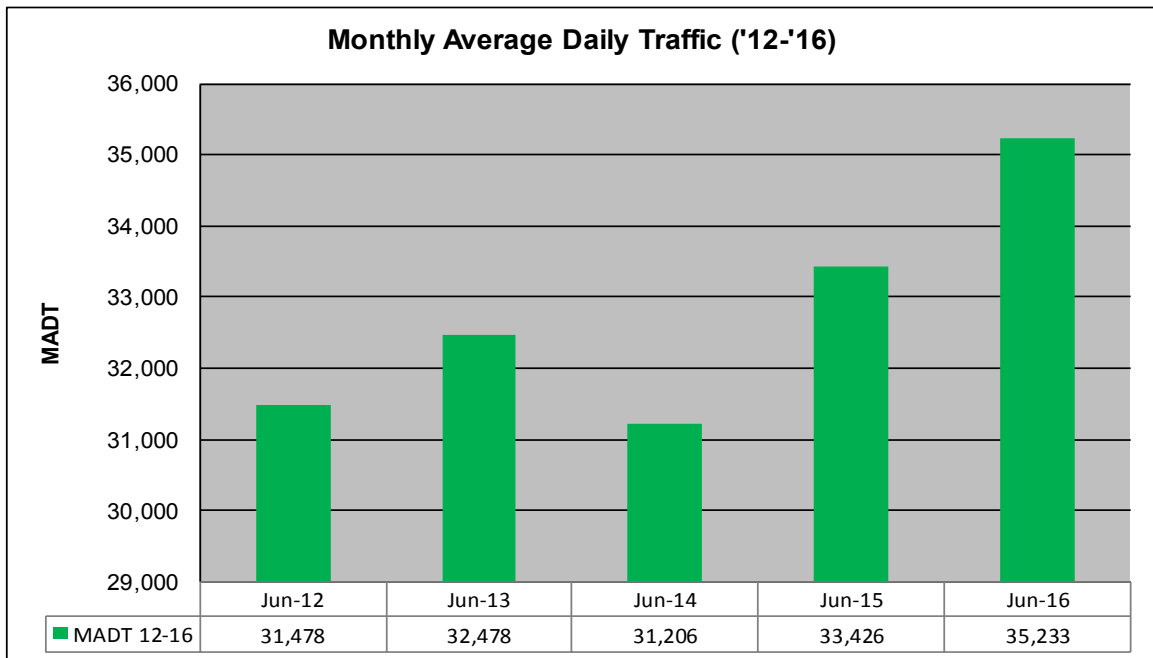
MONTHLY REPORT, STATION NO. 382 (ATR)

JUNE 2016

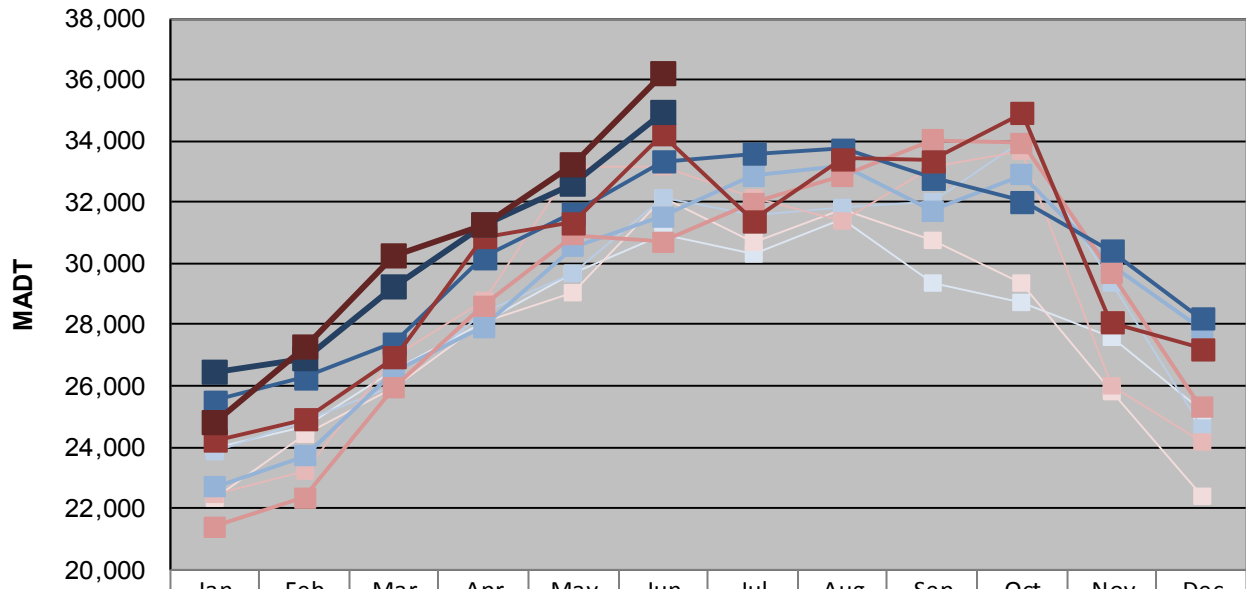
Station Measurement: VOLUME/SPEED/CLASS		
Route: TH 52	Route Direction: N/S	Lanes: 4
County: Dakota	Closest City: Coates	
Functional Class: Rural Principal Arterial - Other		
Location: N OF 180TH ST E, S OF COATES		
Ref Post: 111+00.966	True Mile: 112.328	Sequence No. 9871
Volume: 1,056,986		MADT: 35,233
Weekday (M-F) MADT: 34,904		Weekend (Sa-Su) MADT: 36,228



Note: Increase in traffic September to November 2013 and July/August/October/November 2014 due to detour from TH 3



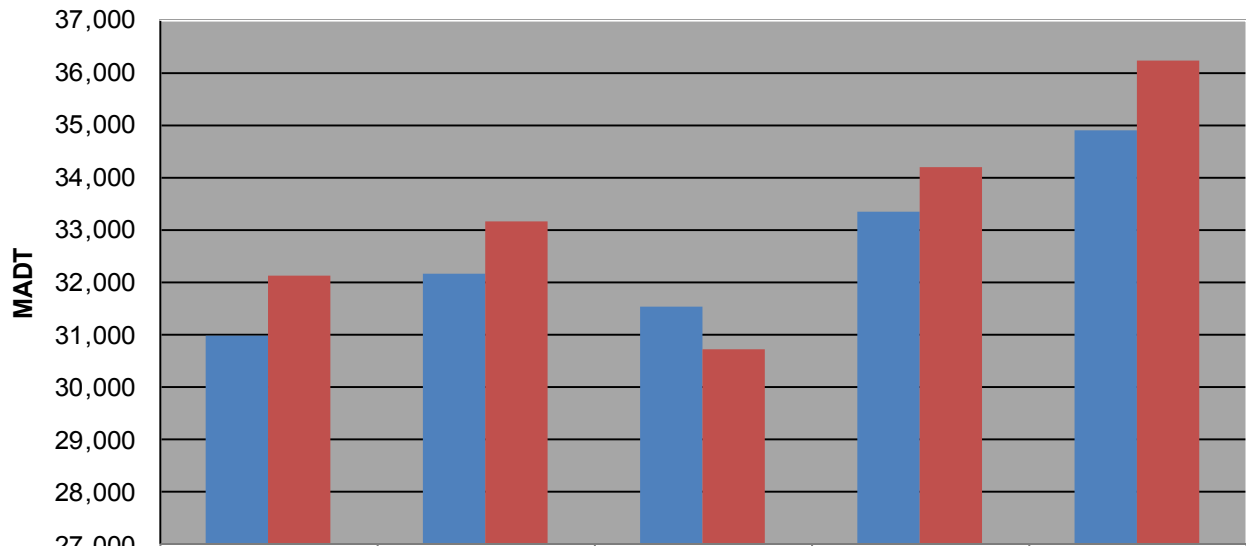
Weekday (WD)/Weekend (WE) Monthly Average Daily Traffic



	Jan	Feb	Mar	Apr	May	Jun	Jul	Aug	Sep	Oct	Nov	Dec
'12 WD	23,982	24,646	26,528	28,082	29,650	30,966	30,338	31,446	29,368	28,754	27,570	25,202
'12 WE	22,338	24,406	25,948	28,086	29,032	32,136	30,712	31,768	30,740	29,360	25,812	22,390
'13 WD	23,878	24,844	26,000	28,386	29,690	32,142	31,600	31,858	32,046	33,954	29,380	24,588
'13 WE	22,482	23,240	26,982	28,778	33,130	33,150	32,158	31,360	33,138	33,658	25,986	24,156
'14 WD	22,682	23,712	26,464	27,906	30,548	31,534	32,858	33,178	31,724	32,884	29,970	27,902
'14 WE	21,382	22,362	25,946	28,616	30,936	30,712	31,974	32,844	34,018	33,924	29,698	25,290
'15 WD	25,520	26,260	27,426	30,184	31,662	33,334	33,574	33,744	32,810	32,048	30,418	28,212
'15 WE	24,230	24,918	26,944	30,854	31,342	34,210	31,408	33,438	33,350	34,906	28,090	27,210
'16 WD	26,438	26,878	29,228	31,288	32,584	34,904						
'16 WE	24,782	27,256	30,220	31,290	33,216	36,228						

Note: 'Weekday' defined as Monday-Friday, 'Weekend' defined as Saturday-Sunday

Weekday/Weekend Monthly Average Daily Traffic ('12-'16)



	Jun-12	Jun-13	Jun-14	Jun-15	Jun-16
Weekday	30,966	32,142	31,534	33,334	34,904
Weekend	32,136	33,150	30,712	34,210	36,228