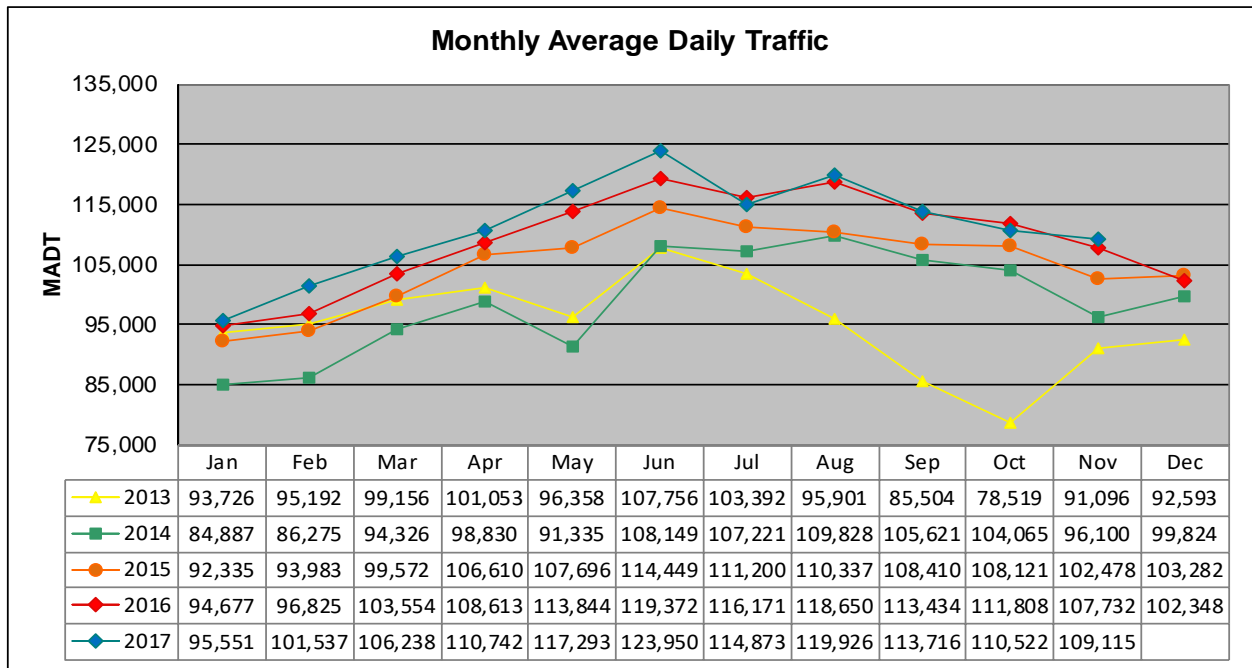


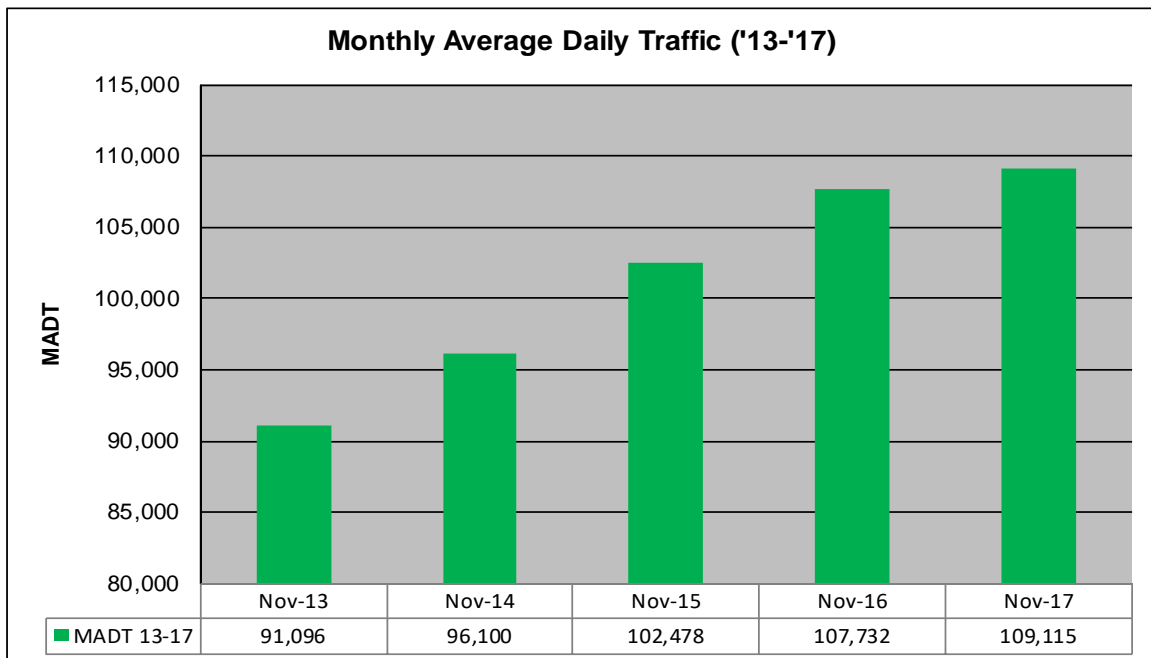
MONTHLY REPORT, STATION NO. 305 (ATR)

NOVEMBER 2017

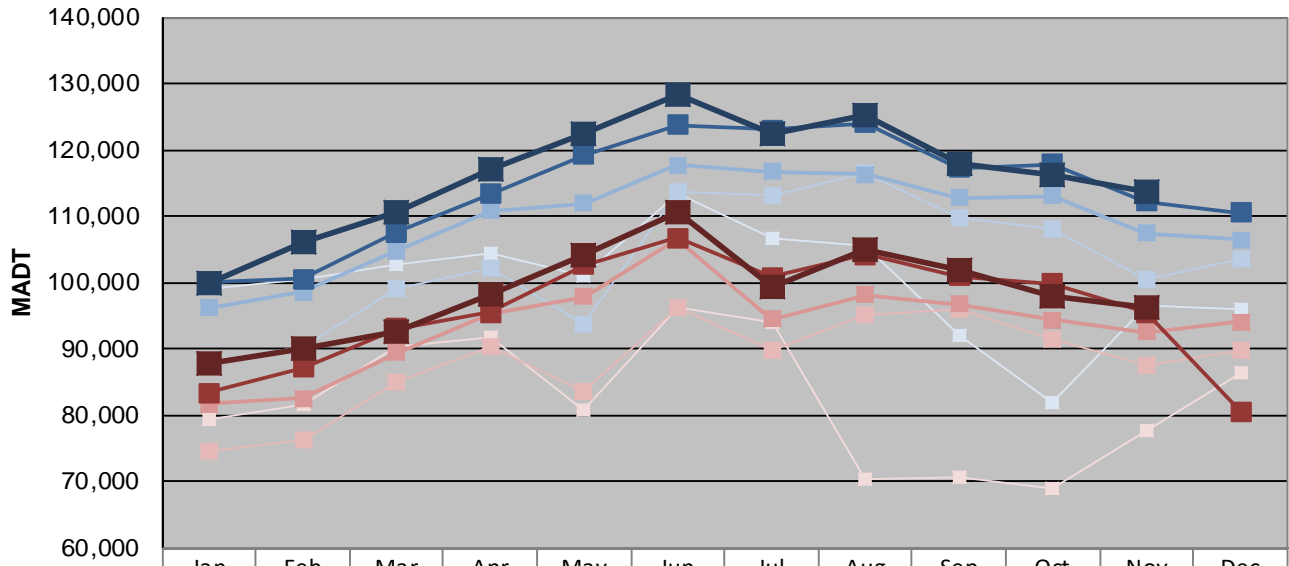
| | | |
|----------------------------------------------------------|----------------------|-------------------------------------|
| Station Measurement: VOLUME | | |
| Route: I-35 | Route Direction: N/S | Lanes: 6 |
| County: Dakota | | Closest City: Burnsville |
| Functional Class: Urban Principal Arterial - Interstate | | |
| Location: S OF MSAS101 (CRYSTAL LAKE RD W) IN BURNSVILLE | | |
| Ref Post: 087+00.070 | True Mile: 87.071 | Sequence No. 6786 |
| Volume: 3,273,459 | | MADT: 109,115 |
| Weekday (M-F) MADT: 113,786 | | Weekend (Sa-Su) MADT: 96,246 |



Note: Decrease in traffic May and August to November 2013 and May 2014 due to construction on I-35



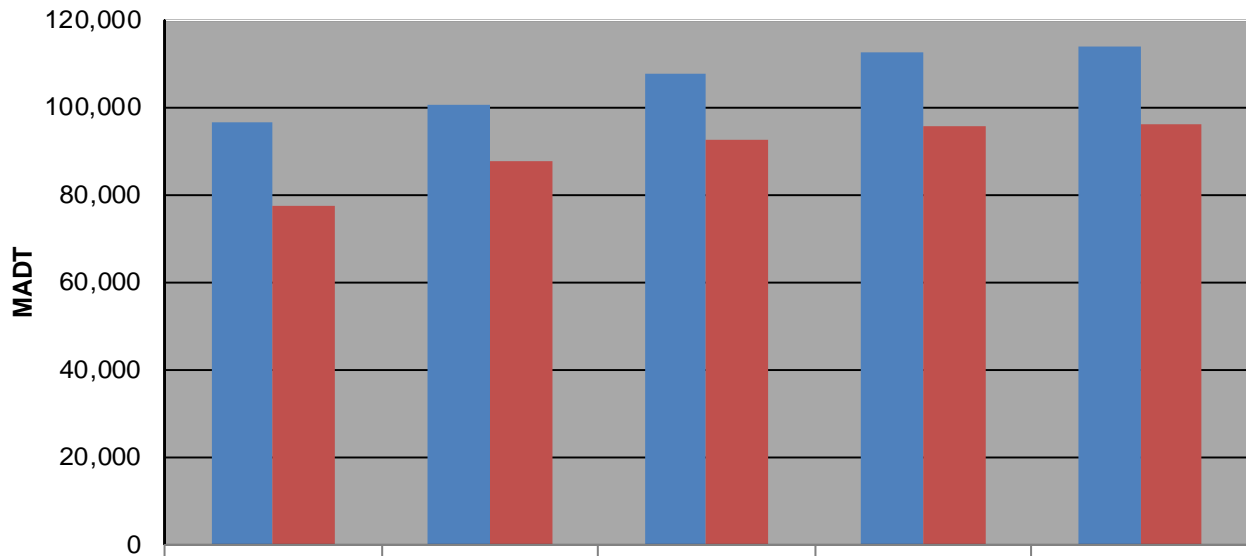
Weekday (WD)/Weekend (WE) Monthly Average Daily Traffic



| | Jan | Feb | Mar | Apr | May | Jun | Jul | Aug | Sep | Oct | Nov | Dec |
|--------|--------|---------|---------|---------|---------|---------|---------|---------|---------|---------|---------|---------|
| '13 WD | 98,932 | 100,570 | 102,750 | 104,472 | 101,158 | 113,510 | 106,570 | 105,680 | 92,132 | 81,766 | 96,420 | 95,848 |
| '13 WE | 79,354 | 81,746 | 90,282 | 91,828 | 80,794 | 96,250 | 94,072 | 70,360 | 70,708 | 68,998 | 77,560 | 86,486 |
| '14 WD | 88,080 | 90,318 | 99,136 | 102,146 | 93,668 | 113,796 | 113,060 | 116,428 | 109,654 | 108,106 | 100,442 | 103,478 |
| '14 WE | 74,490 | 76,166 | 84,924 | 90,248 | 83,490 | 96,168 | 89,686 | 95,200 | 95,856 | 91,484 | 87,418 | 89,712 |
| '15 WD | 96,154 | 98,564 | 104,734 | 110,762 | 111,910 | 117,718 | 116,712 | 116,334 | 112,770 | 113,120 | 107,400 | 106,438 |
| '15 WE | 81,644 | 82,530 | 89,394 | 95,306 | 97,888 | 106,542 | 94,508 | 98,192 | 96,778 | 94,292 | 92,586 | 94,124 |
| '16 WD | 99,964 | 100,604 | 107,548 | 113,384 | 119,252 | 123,822 | 123,038 | 123,988 | 117,294 | 117,852 | 112,274 | 110,518 |
| '16 WE | 83,422 | 87,146 | 93,096 | 95,530 | 102,650 | 106,710 | 100,766 | 104,256 | 100,946 | 99,776 | 95,500 | 80,522 |
| '17 WD | 99,804 | 106,172 | 110,586 | 117,066 | 122,528 | 128,360 | 122,502 | 125,198 | 117,874 | 116,338 | 113,786 | |
| '17 WE | 87,684 | 89,952 | 92,518 | 98,094 | 104,164 | 110,604 | 99,378 | 104,922 | 101,966 | 97,886 | 96,246 | |

Note: 'Weekday' defined as Monday-Friday, 'Weekend' defined as Saturday-Sunday

Weekday/Weekend Monthly Average Daily Traffic ('13-'17)



| | Nov-13 | Nov-14 | Nov-15 | Nov-16 | Nov-17 |
|---------|--------|---------|---------|---------|---------|
| Weekday | 96,420 | 100,442 | 107,400 | 112,274 | 113,786 |
| Weekend | 77,560 | 87,418 | 92,586 | 95,500 | 96,246 |